



Lumations Twinkly Generation II Smart LED Light Strings Instructions

[Home](#) » [Lumations](#) » Lumations Twinkly Generation II Smart LED Light Strings Instructions 

Lumations Twinkly Generation II Smart LED Light Strings Instructions



warning

READ AND KEEP THESE INSTRUCTIONS FOR FUTURE REFERENCE

Contents

[1 IMPORTANT SAFETY INSTRUCTIONS](#)

[2 Technical Specification](#)

[3 Single String Setup](#)

[4 Multiple Strings Setup](#)

[5 Controller](#)

[6 Preset Effects](#)

[7 App Download And Setup Twinkly](#)

[8 Connection Modes](#)

[9 Mapping](#)

[10 Mapping Tips](#)

[11 Online Manual](#)

[12 Choose Preset Effects](#)

[13 Troubleshooting](#)

[14 Reset Twinkly](#)

[15 FCC Caution](#)

[16 Documents / Resources](#)

[17 Related Posts](#)

IMPORTANT SAFETY INSTRUCTIONS

When using electrical products, basic precautions should always be followed including the following

READ AND FOLLOW ALL SAFETY INSTRUCTIONS

1. Do not use seasonal products outdoors unless marked suitable for indoor and outdoor use. When used outdoors, this product must be connected to a Ground Fault Circuit Interrupting (GFCI) outlet. If one is not provided, contact a qualified electrician for proper installation.
2. This seasonal use product is not intended for permanent installation or use.
3. Do not mount or place near gas or electric heaters, fireplace, candles or other similar sources of heat.
4. Do not secure the wiring of the product with staples or nails, or place on sharp hooks or nails.
5. Do not let lamps rest on the supply cord or on any wires.
6. Disconnect the product from power source when leaving the house, when retiring for the night, or if left unattended.
7. This is an electric product – not a toy! To avoid risk of fire, burns, personal injury and electric shock, **KEEP PRODUCT OUT OF REACH OF SMALL CHILDREN!**
8. Do not use this product for other than its intended use.
9. Do not hang ornaments or other objects from cord, wire, or light string.
10. Do not close doors or windows on the product or extension cords as this may damage the wire insulation.
11. Do not cover the product with cloth, paper or any materials not part of the product when in use.
12. The supply cord, adapter, plugs and/or connectors can not be replaced or modified. If either is damaged, the product should be scrapped.
13. Strobe lights have been known to trigger seizures in people with photosensitive epilepsy.
14. Read and follow all instructions that are provided with the product.

SAVE THESE INSTRUCTIONS.

Warning: This product may potentially trigger seizures for people with photosensitive epilepsy when using the motion effect light modes.

CAUTION

1. To reduce the risk of fire or electric shock:
 - Do not install on trees with needles, leaves or branches covering any metal materials;
 - Do not mount or support cords or cables in a manner that can cut or damage wire insulation;
 - Do not attempt to replace lamps or modify string
 - Use only the adapter provided with this product,
 - This product does not contain lamp shunts.
2. Make sure connectors are fully inserted and secured. Twist all connector rings until hand tight.
3. Some Twinkly light sets (models dependable) allow multiple strings setup. To avoid the risk of fire or personal injury, do NOT exceed the maximum wattage capacity of adapter. Refer to the "Maximum Light Strings can be Connected" column in the Technical Specifications table for more details
4. When not in use, store the product in a cool, dry place away from sunlight. .
5. When the product is placed on a live tree, the tree should be well maintained and fresh. Do not place on live trees in which the needles are brown or break off easily. Keep the tree holder filled with water.
6. If the product is placed on a tree, the tree should be well secured and stable.
7. Before using or reusing, inspect product carefully. Discard any products that have cut, damaged, or frayed wire insulation or cords, cracks in the lampholders or enclosures, loose connections, or exposed copper wire.
8. When storing the product, carefully remove the product from wherever it is placed, including trees, branches, or bushes, to avoid any undue strain or stress on the product conductors, connections, and wires.



Information Decoration lighting, not suitable for household illumination. The crossed-out wheeled bin symbol indicates that the item should be disposed of separately from household waste. The item should be handed in for recycling in accordance with local environmental regulations for waste disposal.

Caution Warning

This is a class B product. In a domestic environment this product may cause radio interference in which case the user may be required to take adequate measures! Do not connect the chain to the supply while it is in the packing. Do not connect parts of this light chain to those of another manufacturer. **NON-REPLACEABLE BULB.** Built-in LED light source. The connecting cable cannot be repaired or replaced. If the cable is damaged, the entire fitting must be discarded. Danger! Strangulation hazard. Hang out of reach of young children.

Technical Specification

Description	Light Counts	LED Color	AC Adapter	Rated Wattage of Light String (Amps)	Total Wattage of Light String and Adapter	Maximum Wattage Capacity of Adapter	Maximum Light Strings can be Connected (Same model)
	50	RGB	USA / Canada Version Input 120 V~ / 60 Hz, 0.45 A Output DC 24 V, 1.08 A	5.3 W (220 mA)	8.5 W	26 W (1.08 A)	3
			EU / UK / Australia Version PRI 220-240 V~ / 50-60 Hz, Max: 0.15 A SEC DC 24 V Max 1 A, Max 24 W	5.3 W (220 mA)	6.5 W	24 W (1 A)	3
	100	RGB	USA / Canada Version Input 120 V~ / 60 Hz, 0.45 A Output DC 24 V, 1.08 A	8.9 W (370 mA)	13 W	26 W (1.08 A)	2

Wrapp ed Do me Str aight L ights			EU / UK / Australia Version PRI 220-240 V~ / 50-60 Hz, Max: 0. 15 A SEC DC 24 V Max 1 A, Max 24 W	8.9 W (370 mA)	11.2 W	24 W (1 A)	2
	150	RG B	USA / Canada Version Input 12 0 V~ / 60 Hz, 0.45 A Output DC 24 V, 1.08 A	12.5 W (52 0 mA)	17.4 W	26 W (1.0 8 A)	N/A
			EU / UK / Australia Version PRI 220-240 V~ / 50-60 Hz, Max: 0. 15 A SEC DC 24 V Max 1 A, Max 24 W	12.5 W (52 0 mA)	15.2 W	24 W (1 A)	N/A
	250	RG B	USA / Canada Version Input 12 0 V~ / 60 Hz, 0.45 A Output DC 24 V, 1.08 A	19.9 W (83 0 mA)	27.3 W	26 W (1.0 8 A)	N/A

		<p>EU / UK / Australia Version PRI 220-240 V~ / 50-60 Hz, Max: 0. 15 A</p> <p>SEC DC 24 V Max 1 A, Max 24 W</p>	19.9 W (83 0 mA)	26.7 W	24 W (1 A)	N/A
400	RG B	<p>USA / Canada Version Input 12 0 V~ / 60 Hz, 0.83 A Output DC 24 V, 2 A</p>	31.7 W (13 20 mA)	38.9 W	48 W (2 A)	N/A
		<p>EU / UK / Australia Version PRI 220-240 V~ / 50-60 Hz, Max: 0. 378 A</p> <p>SEC DC 24 V 2.063 A, Max 49. 5 W</p>	31.7 W (13 20 mA)	38.3 W	49.5 W (2. 063 A)	N/A
600	RG B	<p>USA / Canada Version Input 12 0 V~ / 60 Hz, 0.83 A Output DC 24 V, 2 A</p>	29.3 W (12 20 mA)	35.5 W	48 W (2 A)	N/A

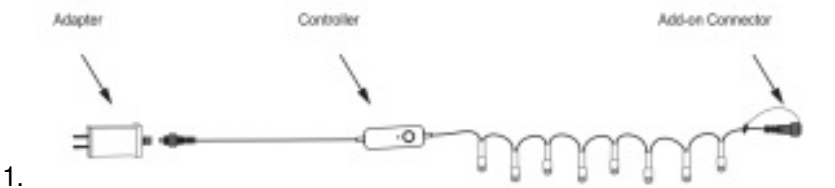
			EU / UK / Australia Version PRI 220-240 V~ / 50-60 Hz, Max: 0. 378 A SEC DC 24 V 2.063 A, Max 49. 5 W	29.3 W (12 20 mA)	34.2 W	49.5 W (2. 063 A)	N/A
--	--	--	---	----------------------	--------	----------------------	-----

	50	RG BW	USA / Canada Version Input 12 0 V~ / 60 Hz, 0.45 A Output DC 24 V, 1.08 A	4.4 W (185 mA)	7.4 W	26 W (1.0 8 A)	4
			EU / UK / Australia Version PRI 220-240 V~ / 50-60 Hz, Max: 0. 15 A SEC DC 24 V Max 1 A, Max 24 W	4.4 W (185 mA)	5.4 W	24 W (1 A)	4
	100	RG BW	USA / Canada Version Input 12 0 V~ / 60 Hz, 0.45 A Output DC 24 V, 1.08 A	7.7 W (320 mA)	11.7 W	26 W (1.0 8 A)	2
			EU / UK / Australia Version PRI 220-240 V~ / 50-60 Hz, Max: 0. 15 A SEC DC 24 V Max 1 A, Max 24 W	7.7 W (320 mA)	9.6 W	24 W (1 A)	2

Wrapp ed Do me Str aight L ights	150	RG BW	USA / Canada Version Input 12 0 V~ / 60 Hz, 0.45 A Output DC 24 V, 1.08 A	10.6 W (44 0 mA)	15.5 W	26 W (1.0 8 A)	N/A
			EU / UK / Australia Version PRI 220-240 V~ / 50-60 Hz, Max: 0. 15 A SEC DC 24 V Max 1 A, Max 24 W	10.6 W (44 0 mA)	13.3 W	24 W (1 A)	N/A
	250	RG BW	USA / Canada Version Input 12 0 V~ / 60 Hz, 0.45 A Output DC 24 V, 1.08 A	17.2 W (71 5 mA)	23.9 W	26 W (1.0 8 A)	N/A
			EU / UK / Australia Version PRI 220-240 V~ / 50-60 Hz, Max: 0. 15 A SEC DC 24 V Max 1 A, Max 24 W	17.2 W (71 5 mA)	21.1 W	24 W (1 A)	N/A
	400	RG BW	USA / Canada Version Input 12 0 V~ / 60 Hz, 0.83 A Output DC 24 V, 2 A	25.6 W (10 65 mA)	31.7 W	48 W (2 A)	N/A

			EU / UK / Australia Version PRI 220-240 V~ / 50-60 Hz, Max: 0.378 A SEC DC 24 V 2.063 A, Max 49.5 W	25.6 W (1065 mA)	30.3 W	49.5 W (2.063 A)	N/A
--	--	--	---	------------------	--------	------------------	-----

Single String Setup



1. Product outlook varies by models
Add-on connector only available in specific models.

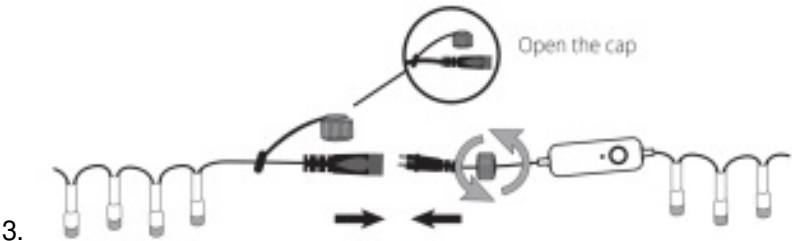


1. Connect the Twinkly light string to the power adapter.
2. Plug the power adapter into a power socket and the light will switch on.

Multiple Strings Setup



1. Images for reference only

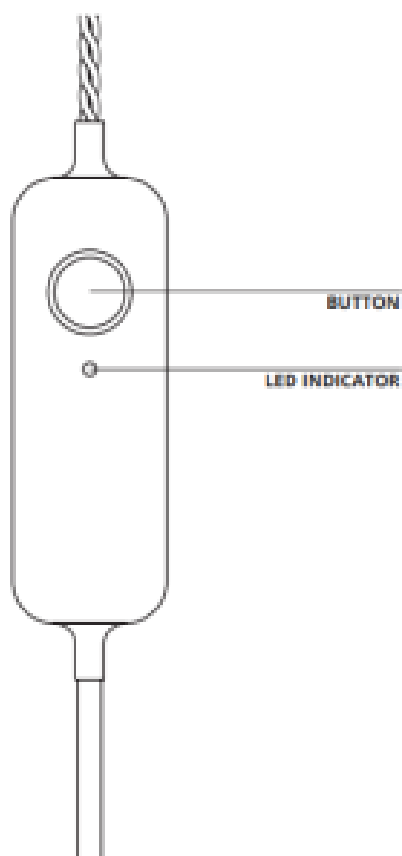




4.

1. Refer to the "Maximum Light Strings can be Connected" column in the Technical Specifications table to confirm if your light set model allows multiple strings setup. Do not attempt multiple light strings setup if N/A is marked. Make sure the total rated wattage of all connected products does not exceed the maximum wattage capacity of a single product.
2. Remove the adapter (and the extension cord as you need) of the first string and save for future use
3. Plug the add-on connector of the second string to the controller connector of the first string.
4. Decorate your desired spot and plug it in.

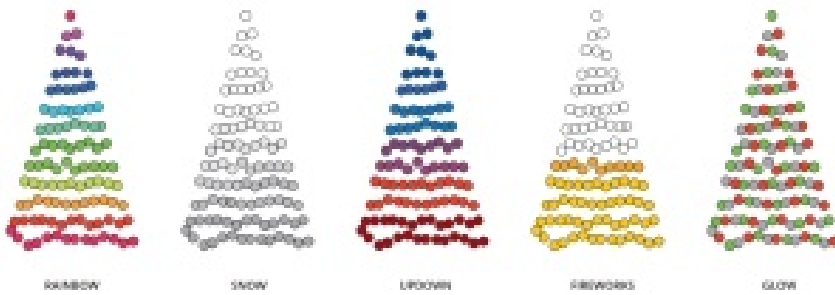
Controller



- CONTINUOUS GREEN: Direct Wi-Fi mode, connected
- FLASHING GREEN: Direct Wi-Fi mode, no device connected
- CONTINUOUS BLUE: Home Wi-Fi network mode, connected
- FLASHING BLUE: Home Wi-Fi network mode, connection in progress
- FLASHING RED: Home Wi-Fi network mode, unable to connect
- LIGHT BLUE: SETUP MODE (Bluetooth ON)
- YELLOW: Firmware Update in progress
- CONTINUOUS RED: General error

- FLASHING WHITE: Reset procedure in progress

Preset Effects



Light arrangement vary by models.

Twinkly comes with 5 preset effects that may be used without downloading the app. Simply plug in the light string to a power outlet, then press the button on the controller to switch between the 5 preset effects.



App Download And Setup Twinkly

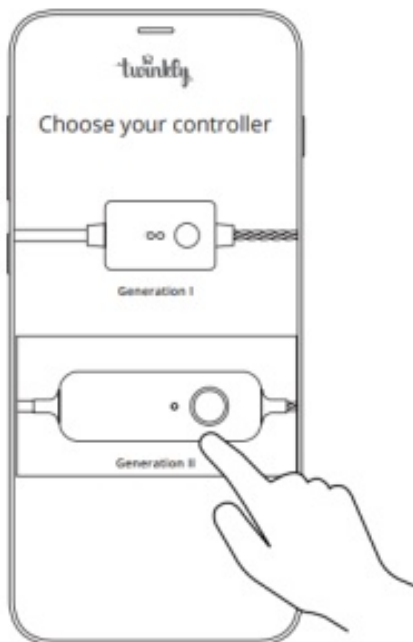




2.



3.

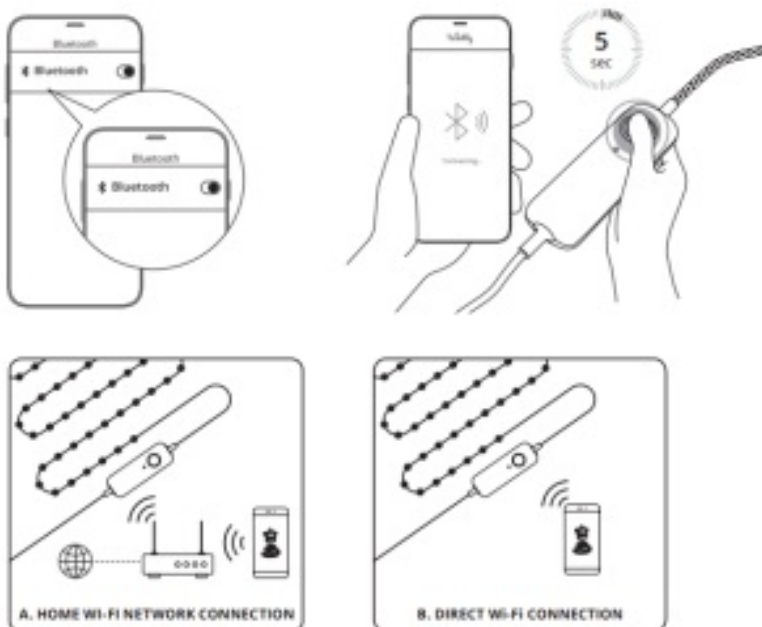


4.

1. Go to App Store/Google Play Store (or scan QR code).
2. Download and install the Twinkly app.
3. Launch Twinkly app.
4. Select GENERATION II controller for your lights. Follow the setup process on the app.

Note: All app illustrations in this document are a mere representation of the functionality and may vary from the actual app visuals.

Connection Modes



Twinkly uses Bluetooth for the setup process only. Wi-Fi connection is required for operation. You can use:

- A.** Home Wi-Fi network connection (recommended): Connect with your home/office WiFi from the list of available networks.
- B.** Direct Wi-Fi connection: Select 'Twinkly _xxxxxx' WiFi from the list of available networks. Password: Twinkly2019 (NOTE: the internet on your phone will not be available in this case)

Mapping



Map the layout of your decoration to unlock the full potential of your Twinkly lights like advanced effects, drawing and many upcoming features.

Mapping Tips



Note: For best result, avoid reflective surfaces behind the tree, keep the mobile camera steady during the process and ensure a moderate ambient light (not too dark).

Online Manual



Browse, play and edit effects



Create new effects



Group multiple devices together



Download new effects



Choose Preset Effects

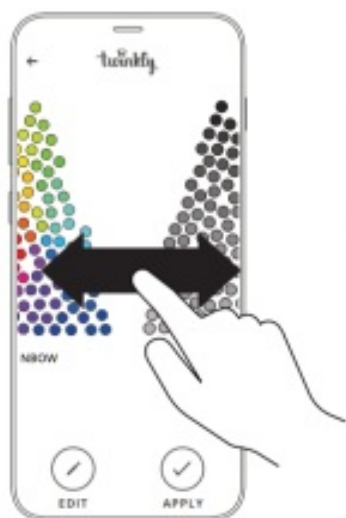
1.



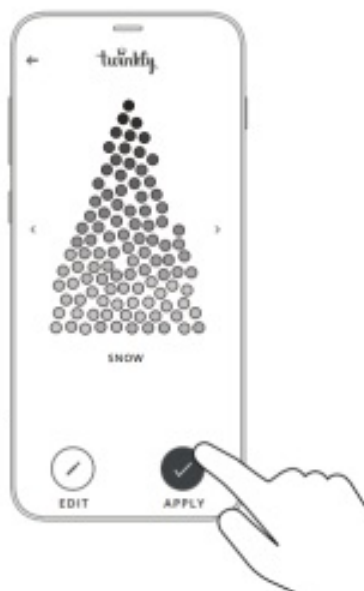
2.



3.



4.



1. Open the Effects Gallery.
2. Select the desired effect to see the real-time preview on your Twinkly set-up.
3. Swipe left or right to browse effect.
4. Tap “Apply to store the effect and play continuously.

Note: App user interface may change due to technical updates and improvements.

Troubleshooting

Q: THE LIGHTS DO NOT SWITCH ON

- Check that the power adapter is plugged in and that the controller is correctly connected to the device
- Check that the LED status indicator on the controller is lit

- Briefly press the button on the controller
- If this doesn't work, unplug the power adapter, wait 30 seconds and plug in again

Q: THE LED INDICATOR IS LIGHT BLUE, BUT MY SMARTPHONE CANNOT FIND TWINKLY

- Unplug the power adapter, wait 30 seconds, plug it in again and repeat Configuration procedure
- If this does not work, try to Reset (see Reset procedure below)

Q: THE LIGHTS TURNED ON BUT LIGHT EFFECTS ARE FREEZED.

- Briefly press the button on the controller
- If this does not work, unplug the power adapter, wait 30 seconds and plug it in again.

Q: TWINKLY SETUP WAS SUCCESSFUL, BUT THE LIGHTS DONT RESPOND TO COMMANDS

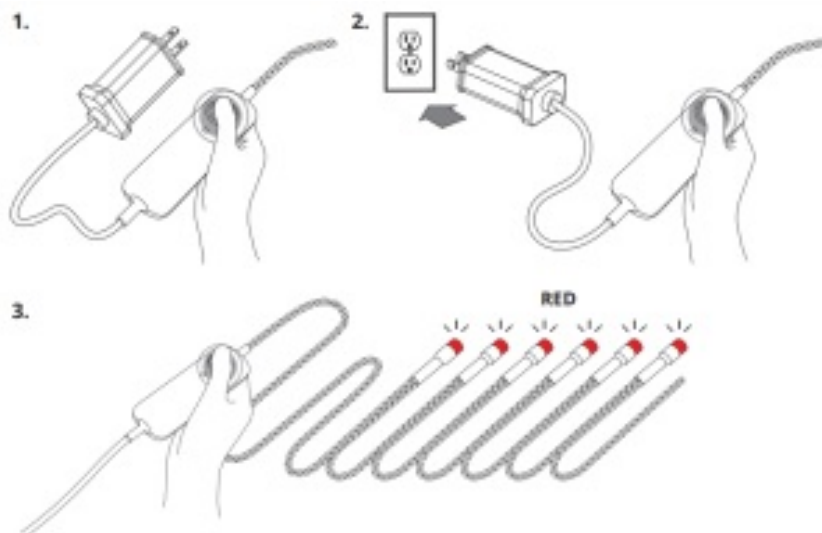
- Within the Twinkly application, open 'Devices" and check that the 'rankly device is selected
- If this does not work, stop the Twinkly application and launch it again
- If this does not weft try to Reset (see Reset procedure below)
- If this does not weft delete the Twinkly application from your smartphone, then download the latest version from App Store or Google Play Store

Q: HOW CAN I CONNECT TWINKLY WITHOUT HOME WI-FI NETWORK?

- Open Wi-Fi settings on your smartphone
- Find and select "Twinklly xxxxxx network
- Enter the Wi-Fi password Twinklly2019 " and ensure that the "Twinklly_xxxxxx network is connected.

If you need any assistance, email us at warranty@polygroup.com

Reset Twinkly



1. Unplug Twinkly from the power socket. Press and hold the controller button.

2. While holding the button, plug in Twinkly.
3. Keep holding the button until all LEDs turn red, then release the button.

FCC Caution

Any Changes or modifications not expressly approved by the party responsible for compliance could void the user's authority to operate the equipment.

This device complies with part 15 of the FCC Rules. Operation is subject to the following two conditions: (1) This device may not cause harmful interference, and (2) this device must accept any interference received, including interference that may cause undesired operation.

IMPORTANT NOTE:

Note: This equipment has been tested and found to comply with the limits for a Class B digital device, pursuant to part 15 of the FCC Rules. These limits are designed to provide reasonable protection against harmful interference in a residential installation. This equipment generates, uses and can radiate radio frequency energy and, if not installed and used in accordance with the instructions, may cause harmful interference to radio communications. However, there is no guarantee that interference will not occur in a particular installation. If this equipment does cause harmful interference to radio or television reception, which can be determined by turning the equipment off and on, the user is encouraged to try to correct the interference by one or more of the following measures:

- Reorient or relocate the receiving antenna.
- Increase the separation between the equipment and receiver.
- Connect the equipment into an outlet on a circuit different from that to which the receiver is connected.
- Consult the dealer or an experienced radio/TV technician for help.

FCC Radiation Exposure Statement: This equipment complies with FCC radiation exposure limits set forth for an uncontrolled environment. This equipment should be installed and operated with minimum distance 20cm between the radiator & your body.

ISED Warning

This device complies with Innovation, Science, and Economic Development Canada licence-exempt RSS standard(s). Operation is subject to the following two conditions: (1) this device may not cause interference, and (2) this device must accept any interference, including interference that may cause undesired operation of the device.



The device is in compliance with RF exposure guidelines; users can obtain Canadian information on RF exposure and compliance. The minimum distance from body to use the device is 20cm.

Polygroup Trading Limited
Unit 606, 6th Floor, Fairmont House,
No.8 Cotton Tree Drive,
Central, Hong Kong

To know more about your twinkly and its other cool features, Please visit:

Website: www.polygroup.com/twinkly

Documents / Resources

	<p>Lumations Twinkly Generation II Smart LED Light Strings [pdf] Instructions TBC003, 2APJZ-TBC003, 2APJZTBC003, Twinkly Generation II Smart LED Light Strings, Smart LED Light Strings, Light Strings</p>
	<p>Lumations Twinkly Generation II Smart LED Light Strings [pdf] User Guide Twinkly Generation II, Smart LED Light Strings, Twinkly Generation II Smart LED Light Strings, LED Light Strings, Light Strings</p>