



# LUMASCAPE sQuad-8 Surface Mounted Luminaire Instruction Manual

[Home](#) » [LUMASCAPE](#) » LUMASCAPE sQuad-8 Surface Mounted Luminaire Instruction Manual 

## Contents

- [1 LUMASCAPE sQuad-8 Surface Mounted Luminaire](#)
- [2 INSTALLATION](#)
- [3 CIRCUITING GUIDELINES](#)
- [4 TRANSFORMERS](#)
- [5 WARNING](#)
- [6 LOW-VOLTAGE CABLE SHALL](#)
- [7 Documents / Resources](#)
- [8 Related Posts](#)

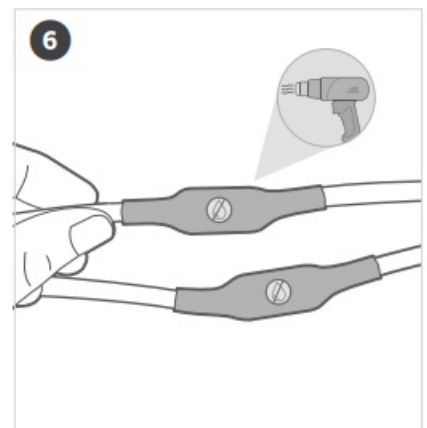
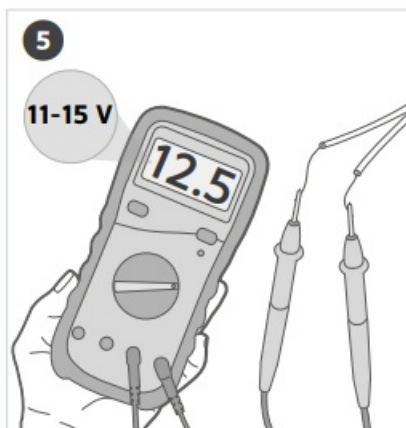
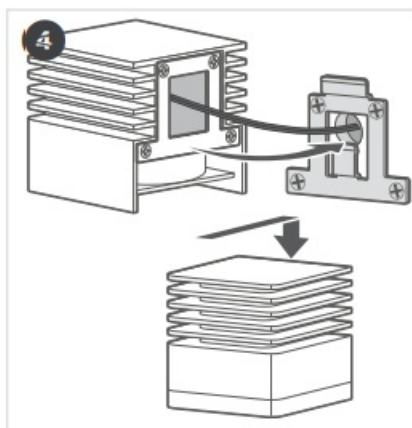
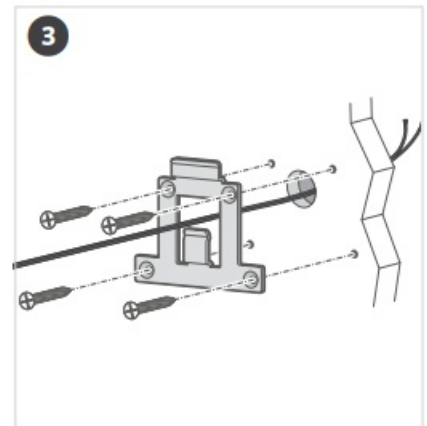
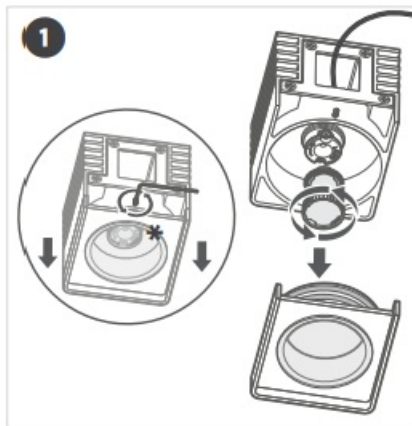


**LUMASCAPE sQuad-8 Surface Mounted Luminaire**

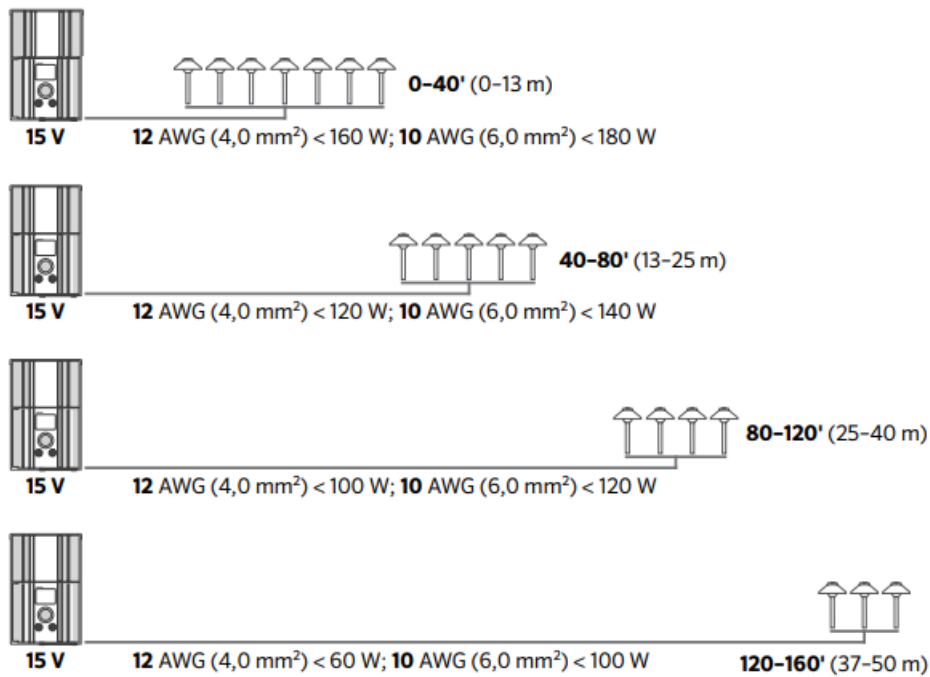


## INSTALLATION

1. Change the beam angle lenses and color filter by removing and replacing existing components (optional).  
\*3/16" (5 mm) Allen wrench.
2. Determine the path of the wire; drill a hole if necessary.
3. Affix the mounting bracket to the surface.
4. Attach the luminaire to the bracket.
5. Use voltmeter to ensure 11 to 15 V at luminaire.
6. Connect wiring with a waterproof connector.



## CIRCUITING GUIDELINES



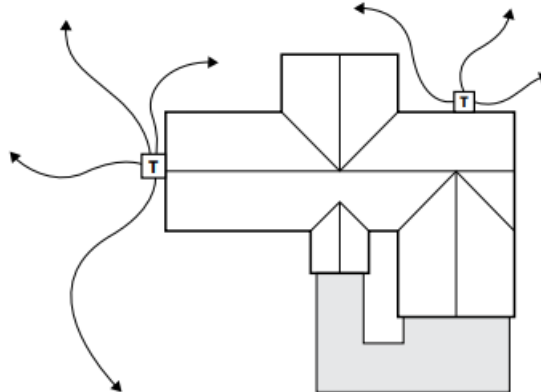
## TRANSFORMERS

### Single transformer:

When using one transformer, center the transformer on the wattage load. Minimize all cable runs to reduce voltage drop.

### Multiple transformers:

When using multiple transformers, spread the load evenly across all transformers. Avoid voltage drops by installing the transformers as close to the luminaires as possible.



Please read and keep all safety and use instructions. If you have questions, contact your local agent or visit <https://www.lumascape.com>.

## WARNING

To reduce the risk of FIRE OR INJURY TO a PERSON:

- Turn off/unplug it and allow it to cool before replacing the lamp.
- The lamp gets HOT quickly. Contact only switch/plug when turning on.
- Do not touch the hot lens, guard, or enclosure.
- Keep lamps away from materials that may burn.
- Do not touch the lamp at any time. Use a soft cloth. Oil from the skin may damage the lamp.

- Do not operate the luminaire fitting with a missing or damaged shield.

#### **WARNING – Risk of Electric Shock**

- May be installed less than 5' (1.5 m) from a pool, spa, or fountain when used with a UL 379 listed transformer.
- A luminaire shall not use tungsten halogen lamps unless the luminaire is marked for such lamps.
- Supply connection and electrical components are located above ground level, except for the secondary cord that is suitable for wet locations.

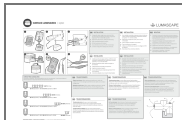
#### **LOW-VOLTAGE CABLE SHALL**

- Be protected by routing in close proximity to the luminaire or fitting, or next to a building structure such as a house or deck.
- Not be buried except for a maximum 6" (152 mm) in order to connect to the main low-voltage cable.
- Have the length cut off so that it is connected to a connector within 6" (152 mm) from a building structure, a luminaire, or a fitting.

This product contains a light source of energy efficiency class G.

ARCHITECTURAL & FACADE LIGHTING | Learn more. Visit [lumascape.com](https://lumascape.com).

#### **Documents / Resources**



[LUMASCAPE sQuad-8 Surface Mounted Luminaire](#) [pdf] Instruction Manual  
sQuad-8, Surface Mounted Luminaire, sQuad-8 Surface Mounted Luminaire, Mounted Luminai  
re, Luminaire