



LUMASCAPE LS1012 Centria C4 Foundation Instruction Manual

[Home](#) » [LUMASCAPE](#) » LUMASCAPE LS1012 Centria C4 Foundation Instruction Manual 

Contents

- [1 LUMASCAPE LS1012 Centria C4 Foundation](#)
- [2 Safety Instruction](#)
- [3 Specification](#)
- [4 Tools Required](#)
- [5 Included Components](#)
- [6 Assembly Instructions](#)
- [7 Wiring Designations](#)
- [8 Dimensions](#)
- [9 Documents / Resources](#)
- [10 Related Posts](#)



LUMASCAPE LS1012 Centria C4 Foundation



Please read and follow all safety instructions carefully. Failure to do so will void the warranty.

WARNING

Product Warranty is void if the product is not installed as per installation instructions and in compliance with all local and provincial codes.

Safety Instruction

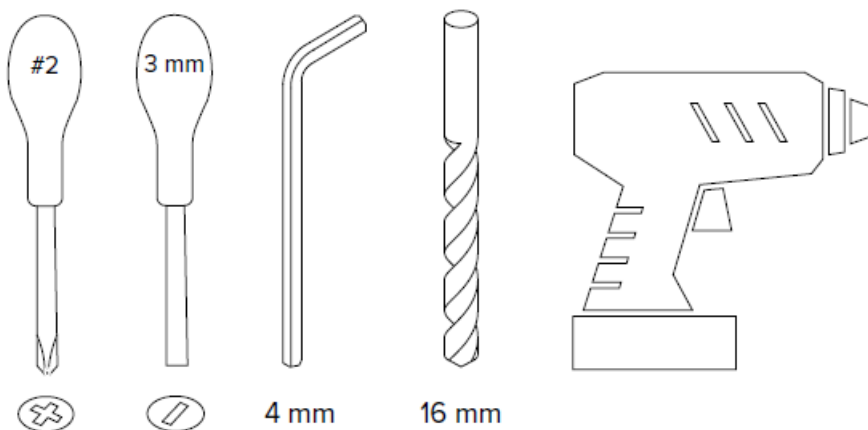
- Ensure installation complies with local electrical rules and regulations.
- All electrical work must be performed by a licensed electrician.
- Protective earth; protective ground (symbol 7).
- All luminaires may become hot. Use discretion on where the luminaire is mounted. Take care when setting the luminaire as it may become hot.
- Luminaire should only be used complete with a protective shield. If the protective shield is cracked, immediately stop using luminaire. Isolate the light source, keep it dry and immediately contact Lumascape for replacement of the protective shield (symbol 11).
- If the external flexible cable or cord of this luminaire is damaged, it shall be exclusively replaced by Lumascape or their service agent in order to avoid a hazard.
- If the luminaire is mounted at heights of 9.8' (3 m) or greater it shall be fitted with additional restraints i.e., lanyards.
- The light source contained in this luminaire shall only be replaced by Lumascape or their service agent.
- Do not stare at the operating light source. The luminaire should be positioned so that prolonged staring into the luminaire at a distance closer than 26' (8 m) is not expected (symbol 13)
- Basic insulation has been maintained between the line voltage and the control conductors.
- To reduce the risk of strangulation the flexible wiring connected to this luminaire shall be effectively fixed to the wall if the wiring is within arm's reach.
- Ensure mains input power is surge protected.
- Never make or break connections while the circuit is energized.
- Do not make modifications or alter the product.
- Keep luminaire clean and free of debris.
- Only clean with warm water.

- Do not use chemicals or abrasives to clean the luminaire as this may void the product warranty.
- Connections are to be kept clean and dry at all times.
- Suitable for use indoors or outdoors.
- For mounting on vertical or near vertical surfaces.

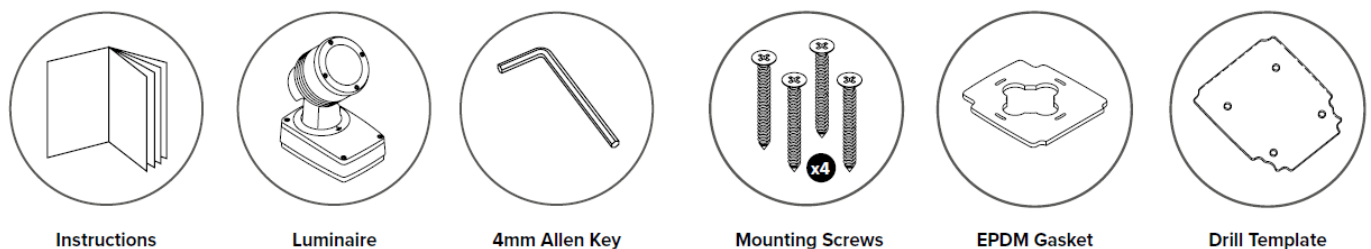
Specification

- MODEL LS1012
- PART NUMBER LS1012 – 24D xxx xx 09 xx xx
- INSTALLATION TYPE WALL MOUNT
- IP RATING IP66/67 (Passes IP68 Test)
- SUPPLY VOLTAGE 120/277 ~Vac, 60 Hz
- INSTRUCTIONS COVER Single Color (Non-Dimmable) Single Color Dimming (0-10 V)
- DIMENSIONS (LxWxH) 10.0" x 4.7" x 7.0" (255 x 120 x 178 mm)
- WEIGHT 4.5 lbs (2.0 kg)
- MAX. PROJECTED AREA 1.1 ft² (0.1 m²).

Tools Required

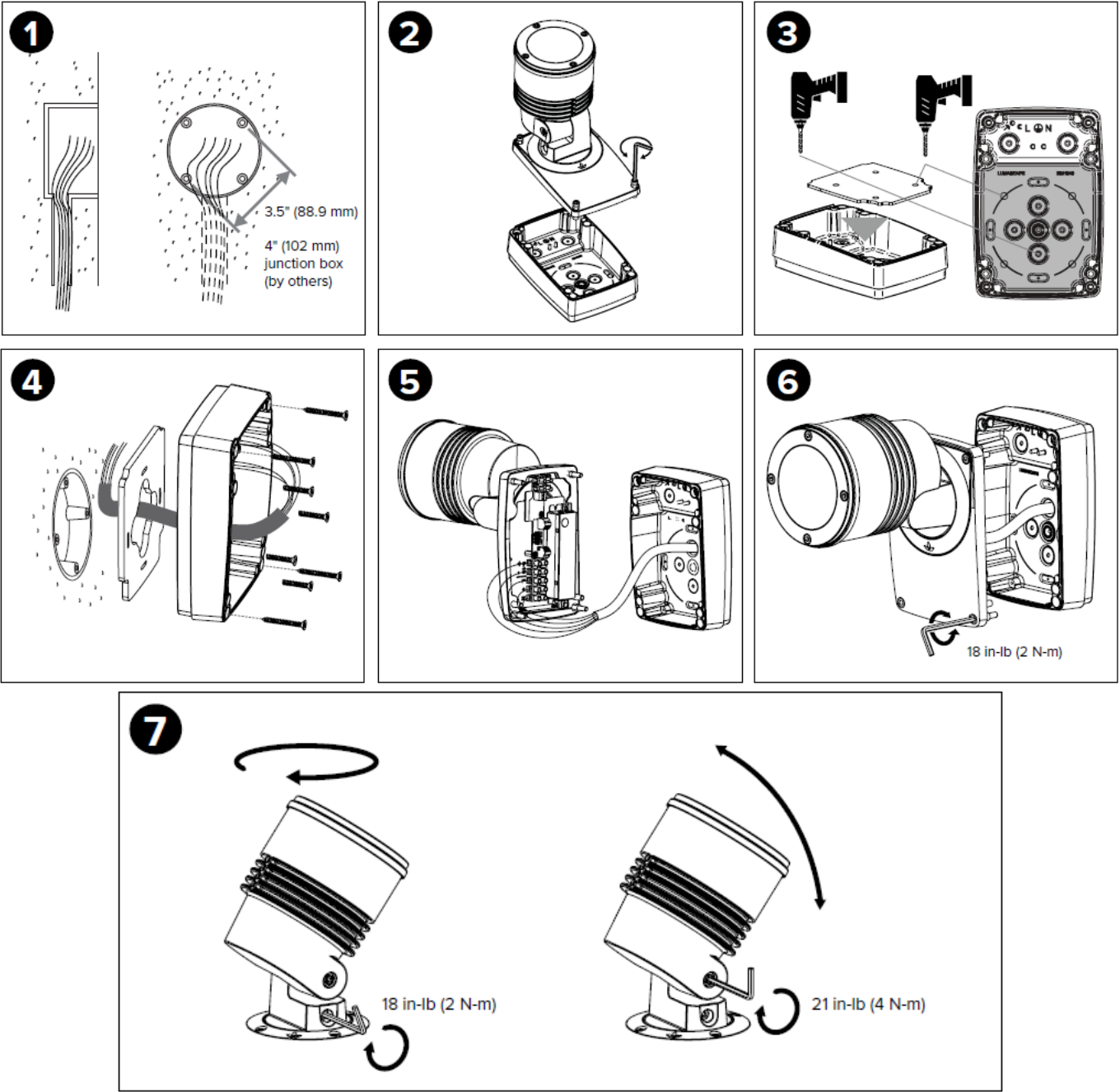


Included Components



- Do Not Use Power Tools on Screws
- Keep Electronics Free From Dirt and Moisture
- Keep Away from Flammable Materials
- Do Not Hose or Pressure Clean
- Do Not Use Silicone On Outside Surface
- Do Not Cut Cable to the Luminaire

Assembly Instructions



Wiring Designations

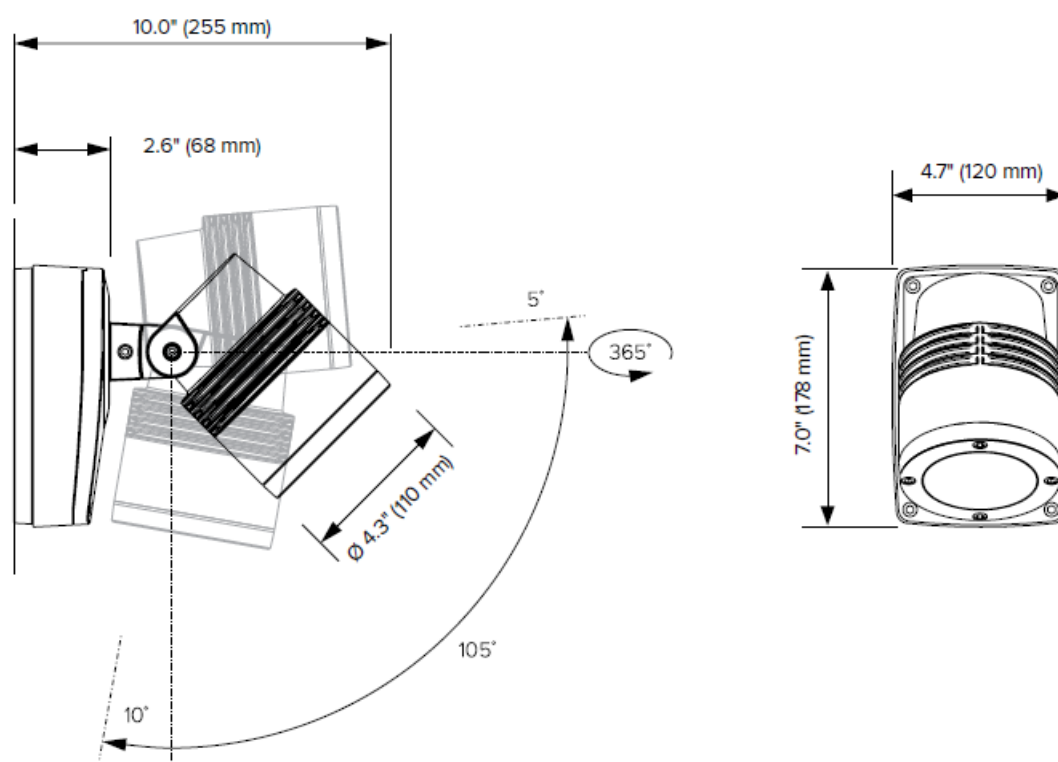
Non-Dimmable (3-Core)

Active	Black
Neutral	White
Earth	Green / Yellow

0-10 V (5-Core) – UL Market


Active	Black
Neutral	White
Earth	Green / Yellow
0-10 V +	Purple
0-10 V –	Grey

Dimensions



Find more product resources at lumascape.com.

Documents / Resources

	<p>LUMASCAPE LS1012 Centria C4 Foundation [pdf] Instruction Manual LS1012 Centria C4 Foundation, LS1012, Centria C4 Foundation, C4 Foundation, Foundation</p>
---	---