



## LUMASCAPE aDuke-12a Area Luminaire Installation Guide

[Home](#) » [LUMASCAPE](#) » LUMASCAPE aDuke-12a Area Luminaire Installation Guide 

### Contents

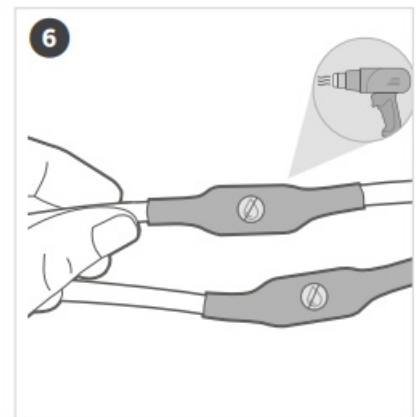
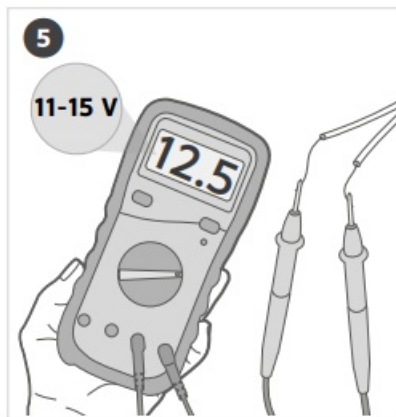
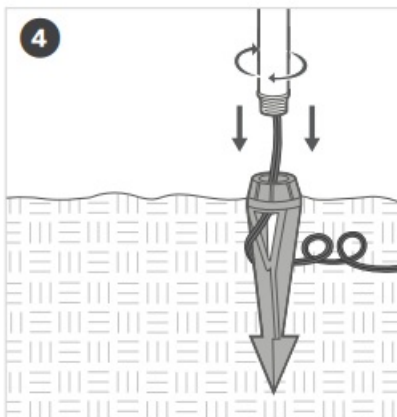
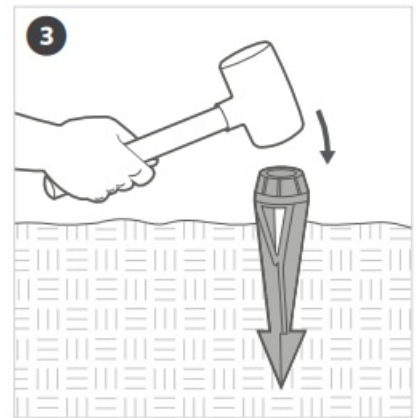
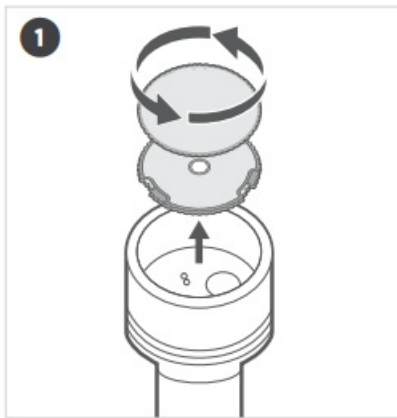
- [1 LUMASCAPE aDuke-12a Area Luminaire](#)
- [2 INSTALLATION](#)
- [3 CIRCUITING GUIDELINES](#)
- [4 TRANSFORMERS](#)
- [5 LOW-VOLTAGE CABLE SHALL](#)
- [6 Documents / Resources](#)
- [7 Related Posts](#)



**LUMASCAPE aDuke-12a Area Luminaire**



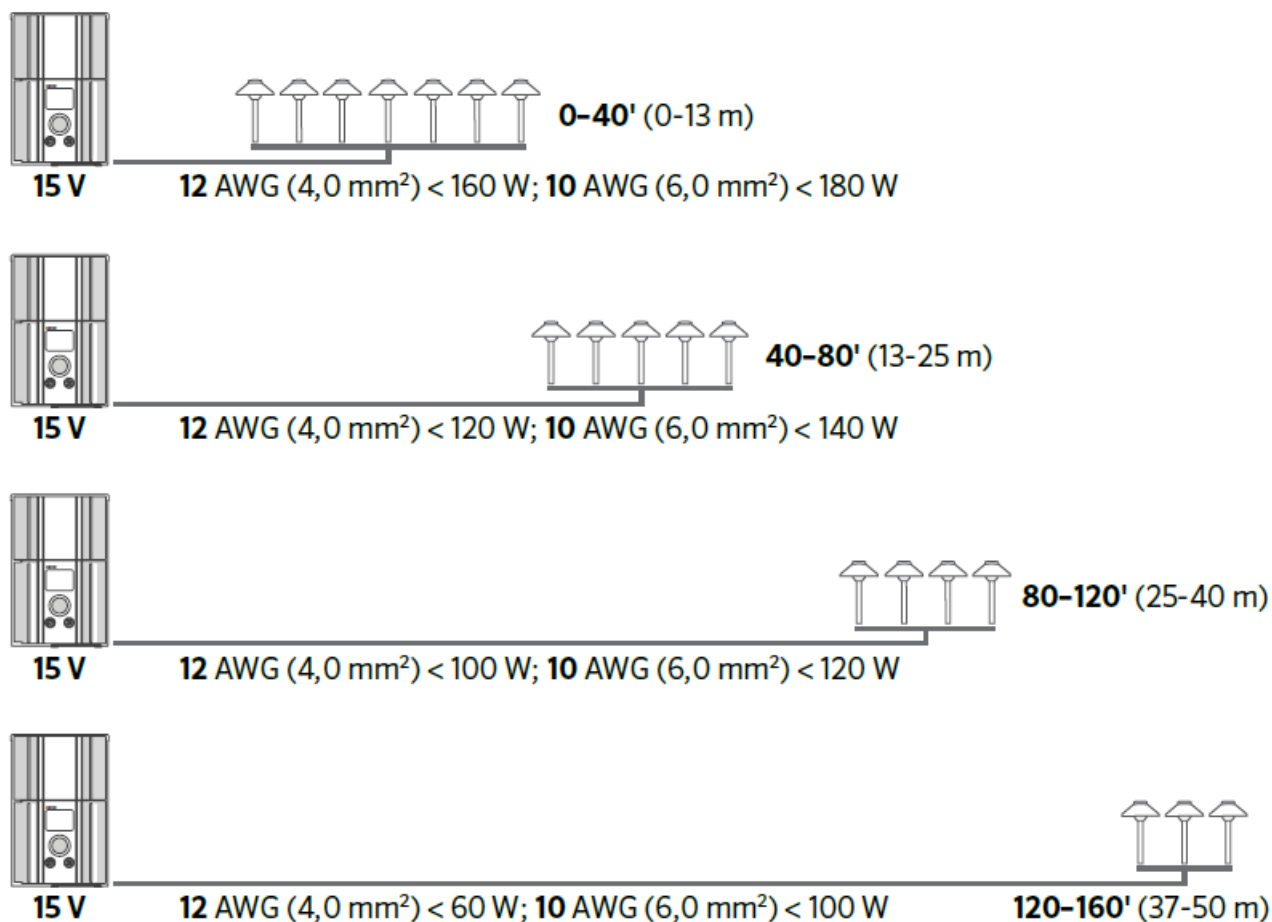
## INSTALLATION



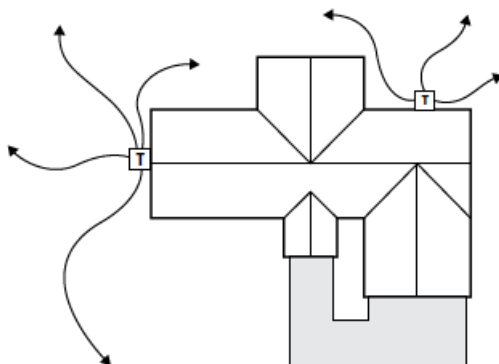
1. Change the beam angle lens and color filter by removing and replacing existing components.
2. Thread top onto riser.
3. Pound stake into ground.

4. Thread luminaire into stake. Coil extra wire for future servicing.
5. Use a voltmeter to ensure 11 to 15 V at the luminaire.
6. Connect wiring with a waterproof connector.

## CIRCUITING GUIDELINES



## TRANSFORMERS



- **Single transformer:** When using one transformer, center the transformer on the wattage load. Minimize all cable runs to reduce voltage drop.
- **Multiple transformers:** When using multiple transformers, spread the load evenly across all transformers. Avoid voltage drop by installing the transformers as close to the luminaires as possible.

Please read and keep all safety and use instructions. If you have questions, contact your local agent or visit <https://www.lumascape.com>

#### **WARNING – To reduce the risk of FIRE OR INJURY TO PERSON**

- Turn off/unplug and allow to cool before replacing lamp.
- Lamp gets HOT quickly. Contact only switch/plug when turning on.
- Do not touch hot lens, guard, or enclosure.
- Keep lamp away from materials that may burn.
- Do not touch the lamp at any time. Use a soft cloth. Oil from skin may damage lamp.
- Do not operate the luminaire fitting with a missing or damaged shield.

#### **WARNING – Risk of Electric Shock**

- Install all luminaires 5' (1.5 m) or more from a pool, spa, or fountain.
- A luminaire shall not use tungsten halogen lamps unless the luminaire is marked for such lamps.
- Supply connection and electrical components are located above ground level, except for the secondary cord that is suitable for wet locations.

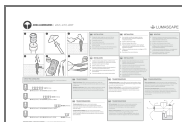
#### **LOW-VOLTAGE CABLE SHALL**

- Be protected by routing in close proximity to the luminaire or fitting, or next to a building structure such as a house or deck.
- Not be buried except for a maximum 6" (152 mm) in order to connect to the main low-voltage cable.
- Have the length cut off so that it is connected to a connector within 6" (152 mm) from a building structure, a luminaire, or fitting.

These products contain a light source of energy efficiency class G.

Learn more Visit: [lumascape.com](https://www.lumascape.com)

#### **Documents / Resources**



**[LUMASCAPE aDuke-12a Area Luminaire](#)** [pdf] Installation Guide  
aDUK Series, aCNT Series, aEMP Series, aDuke-12a, Area Luminaire, aDuke-12a Area Lumin  
aire