


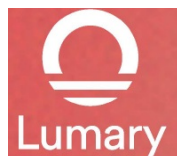


# Lumary US-CL12C-1 UFO Smart Ceiling Light User Guide

[Home](#) » [Lumary](#) » Lumary US-CL12C-1 UFO Smart Ceiling Light User Guide 

## Contents

- [1 Lumary US-CL12C-1 UFO Smart Ceiling Light](#)
- [2 Attention](#)
- [3 Installation diagram](#)
- [4 Frequently Asked Questions](#)
- [5 Troubleshooting](#)
- [6 Reset the device](#)
- [7 Technical Specifications](#)
- [8 Documents / Resources](#)
- [9 Related Posts](#)



## Lumary US-CL12C-1 UFO Smart Ceiling Light



**Get Ready**

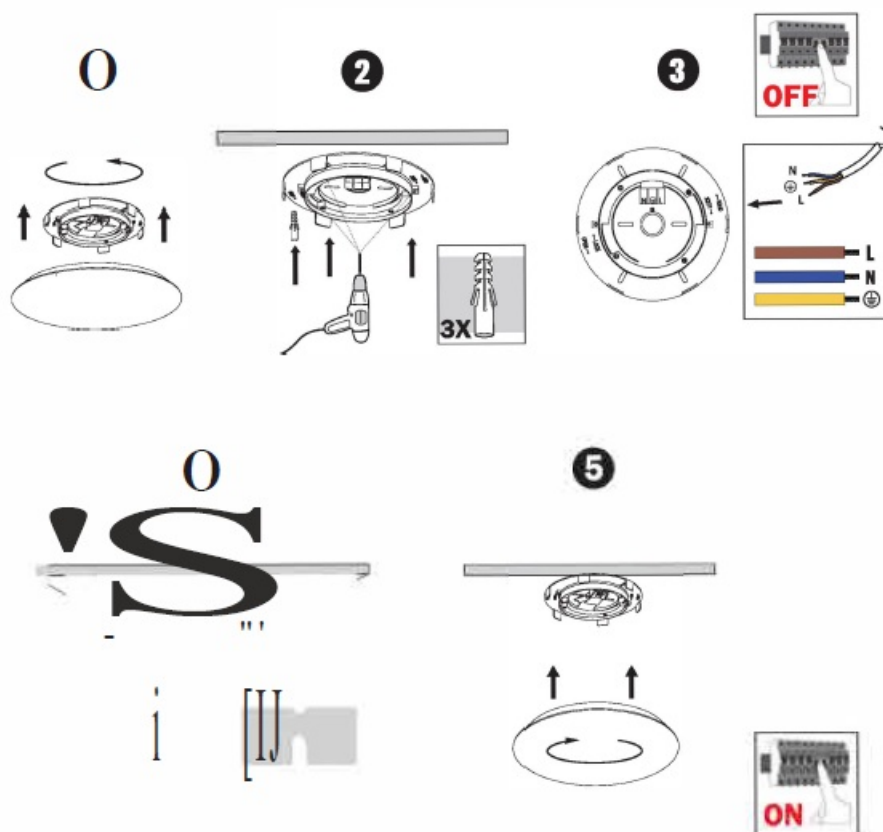
- Know your Wi-Fi network and password
- Make sure your mobile device is running iOS 13.3 or higher and Android 9.0 or higher
- Make sure you're connecting to a 2.4GHz Wi-Fi network (Lumary can't connect to 5GHz networks)

## Attention

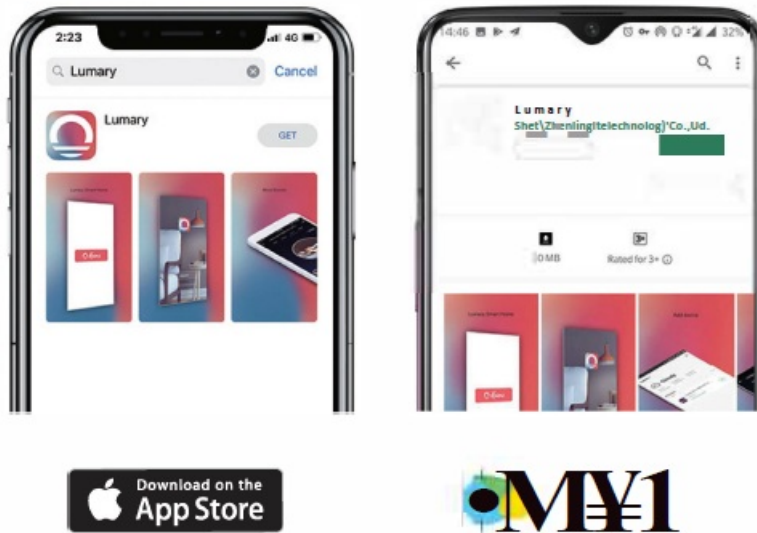
1. Do handle carefully in transportation.
2. Do not disassemble the fixture for non-professional.
3. The fixture work under AC high voltage and current, it should be installed where can't be touched easily. The connection must be completely sealed and be earthed.
4. the external flexible cable or cord of this luminaire cannot be replaced; if the cord is damaged, the luminaire shall be destroyed.
5. The light source contained in this luminaire shall only be replaced by the manufacturer or his service agent or a similarly qualified person.
6. The surface where it's positioned must be firm enough to ensure safety
7. Ensure the voltage of the electricity system is in the range of working voltage for the fixture. Otherwise, lifetime of fixtures will be influenced.
8. Installation and maintenance should be operated by a professional.

## Installation diagram

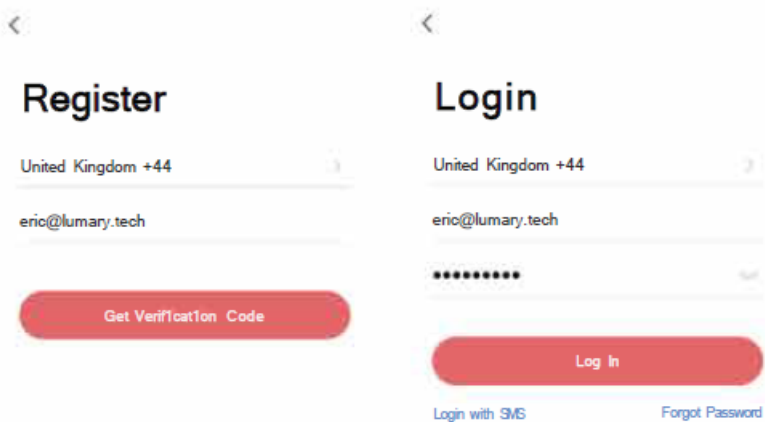
1.



Download the Lumary App



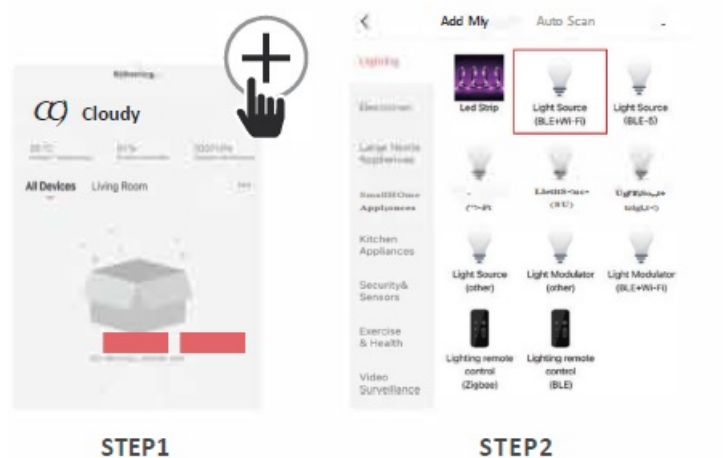
## 2. Register a Lumary account



**Note:** Please select your region and country.

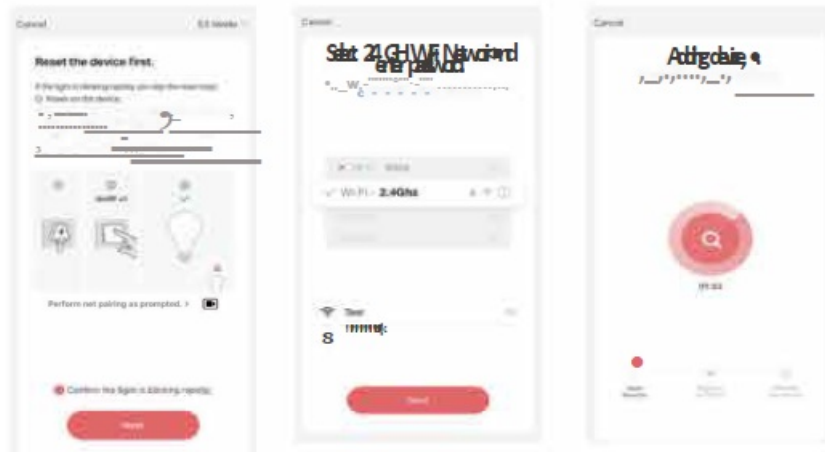
**Note:** Please select your region and country.

## 3. Connect: Easy Mode



STEP1

STEP2

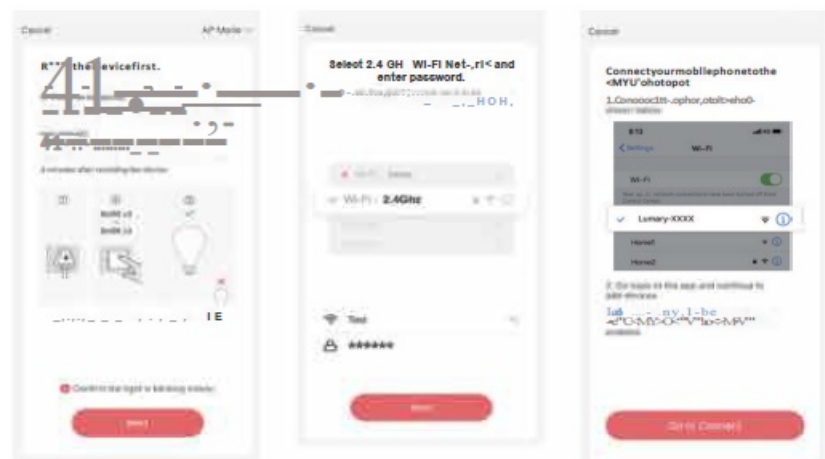


STEP3

STEP4

STEP5

1. Open the Lumary App. In the top corner of the Devices screen, click (+ ).
  2. Choose “Light Source(BLE+Wi-Fi)”. Select upper right corner “EZ Mode”
  3. STEP3 Make sure light is rapidly flashing white. If not, reset to reach Easy Mode to connect. Press “Next” in the App.
  4. STEP4 Enter your Wi-Fi network and password.
  5. STEP5 The Lumary App will connect to your devices.
4. Connect: AP Mode



STEP1

STEP2

STEP3



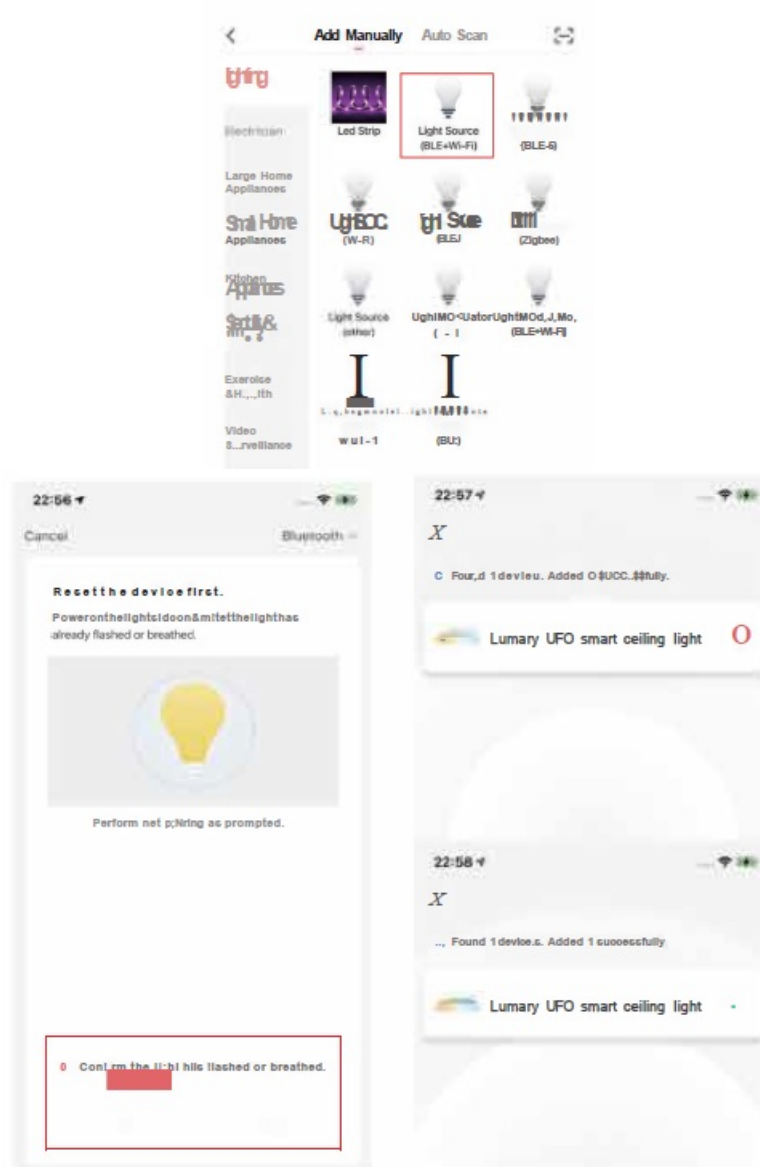
STEP4



STEP5

1. STEP1 Open the Lumary App. In the top corner of the Devices screen, click(+). Choose “Light Source(BLE+Wi-Fi)”. Select upper right corner “AP Mode”
2. STEP2 Make sure light is slowly flashing white. If not, reset to reach AP mode.

3. STEP3 Press “Next” and enter your Wi-Fi details.
  4. STEP4 Follow the instructions to choose the device from your Wi-Fi list.
  5. STEP5 The Lumary App will connect to your devices .
5. Connect: Bluetooth



## Frequently Asked Questions

1. Can I share with family and friends?

Yes, you can share access to your Switch and any other Lumary device. In the Lumary App, press the “Profile” button and click on “Device Sharing” to give or revoke sharing permissions. In order to share, the other user should already have downloaded the Lumary App and registered an account.

2. Can I group multiple Lumary devices together?

Yes, you can group multiple same-type devices by room, location, or however else you want. The same devices can be in multiple groups. For example, if you create a group for “Bedroom” and another group for “Entire House”, your Bedroom lights can be included in both groups. From your main device list, click on one of the devices you want to group, press the “...” button on the top right for advanced settings, and click “Create Group”. You’ll be able to name a new group and choose which devices you’d like to group together.

3. How many devices can I control?

Lumary App can control an unlimited amount of devices in an unlimited amount

of locations. Your router may have a limit of how many devices can be connected to one router.

4. My Lumary device has a funny name. How do I rename it?

From your main device list, click on one of the devices you want to rename, press the button on the top right for advanced settings, and click "Modify Device Name" (or "Modify Group Name"). You'll then be able to choose a more familiar name.

5. What should I do if the device Appears offline or is unreachable?

Make sure your Wi-Fi router is online and in range, and check that you have the latest Lumary functionality by clicking "Check for firmware update" in your device settings. If power is connected but the switch is not responding, hold down the Restart button to cycle the fuse and give the switch a jump start.

6. What's the wireless range?

The range of your home Wi-Fi is heavily dependent on your home router and the conditions of the room. Check with your router specifications for exact range data.

7. If my Wi-Fi internet goes down, will Lumary App still work?

Lumary products need to be connected to Wi-Fi in order to use them remotely.

8. What does the white light mean?

The white light indicates power. If the white light is on, the switch is receiving power; if it is off, it is not receiving power. The white light also indicates connection. If it is solid, the switch is connected; if the it is flashing quickly, the switch is ready to connect using the Easy Mode; if it is flashing slowly, the switch is ready to connect using the AP Mode.

9. What should I do,when I find a problem with the purchased product?

Please email us ( [cs@inlinter.com](mailto:cs@inlinter.com)) with your Amazon order ID. We are dedicated to ensuring your 100% satisfaction. Rest assured if the problem is with this product, we'll be more than happy to exchange it for a new one immediately.

## Important Information

## Troubleshooting

Cannot connect to your Wi-Fi network. Make sure you entered the correct Wi-Fi password during the Wi-Fi setup. Check whether there are any Internet connection problems. If the Wi-Fi signal is too weak, reset your Wi-Fi router and try again.

## Reset the device

To reconnect to Wi-Fi, Reset the device through the wall switch, on-off-on-off-on.

- Reset once (press switch on-off-on-off-on) to reach Easy Mode, indicated by rapidly blinking white light. Refer to connect in Easy Mode.
- Reset again (press switch on-off-on-off-on) to reach AP Mode, indicated by slowly blinking white light. Refer to connect in AP Mode.

## Technical Specifications

- Category Lumary UFO smart ceiling light
- Model US-CL 12C-1

- Size 0300 4SMM
- Wattage 24W
- Luminous flux 2200 lm
- Beam angle 110°
- Color temperature 2700-6500K RGB
- Input Voltage 100-130VAC
- Color rendering index 80
- Working Temperature -20 – +40° C
- Operating life 25000H

Wi-Fi: IEEE 802.11N,2.4GHz (not compatible with 5GHz Wi-Fi networks)


#### Made in China

Support: If you encounter any issues, please contact us at:

[cs@inlinter.com](mailto:cs@inlinter.com)

[support@lumary.tech](mailto:support@lumary.tech)

#### Documents / Resources

	<p><a href="#">Lumary US-CL12C-1 UFO Smart Ceiling Light</a> [pdf] User Guide  US-CL12C, USCL12C, 2A6RDUS-CL12C, 2A6RDUSCL12C, US-CL12C-1 UFO Smart Ceiling Light, US-CL12C-1, UFO Smart Ceiling Light</p>
--	--