



Lumary RC-12K-RF Smart String Downlights User Guide

[Home](#) » [Lumary](#) » Lumary RC-12K-RF Smart String Downlights User Guide 

Contents

- [1 Lumary RC-12K-RF Smart String Downlights](#)
- [2 String Downlights Quick Start Guide](#)
- [3 Remote Controller Introduction](#)
- [4 FCC Statement](#)
- [5 RF Exposure Considerations](#)
- [6 Documents / Resources](#)
 - [6.1 References](#)



Lumary RC-12K-RF Smart String Downlights



Specifications

- Product Name: Smart String Down Light
- Model Number: XYZ123
- Compliance: FCC regulations
- Operating Distance: 20cm minimum between radiator and body

Installation

1. Ensure the device is connected correctly according to the provided manual.
2. If you encounter any issues during installation, consult the dealer or a radio/TV technician for assistance.

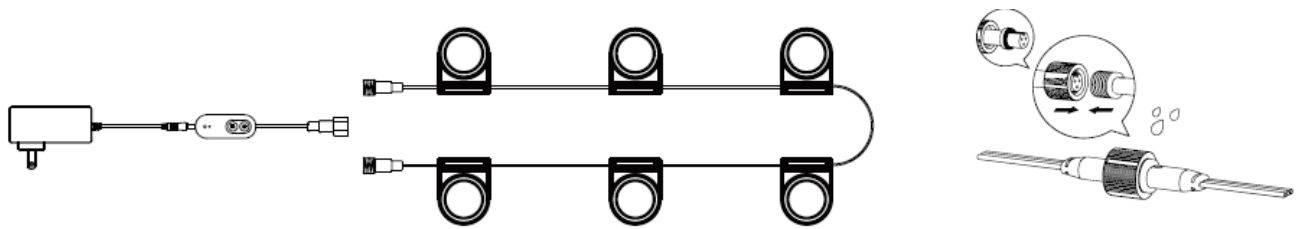
RF Exposure Considerations:

This device complies with FCC radiation exposure limits. Maintain a minimum distance of 20cm between the radiator and your body during operation.

String Downlights Quick Start Guide

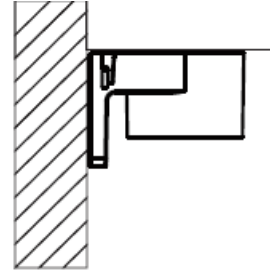
Installation Steps

1. Before installing the string down light, please connect the power supply to the string downlight correctly, then turn on the power and check whether all equipment is working properly (either end of the lamp can be connected to the power supply). Note: Connect the lamp to the power supply first, and then power on for testing.

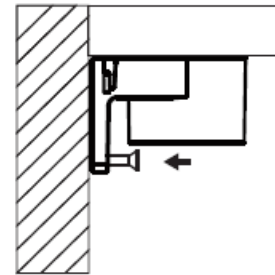
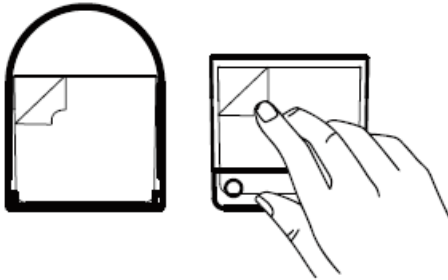


2. clean the surface of the installation area with a rag or paper towel to ensure that it is dry and free of debris.

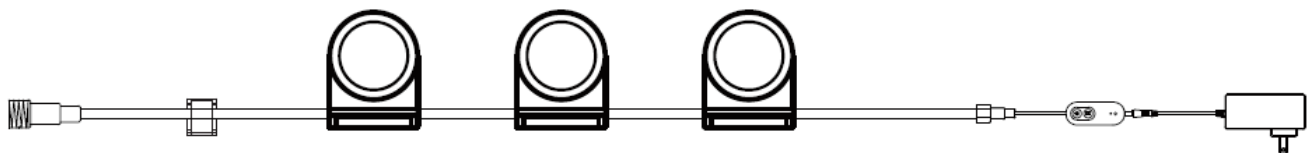
Note: Only for indoor installation.



3. Please use the 3M glue in the accessory bag, peel off the 3M surface layer on the back, and stick it on the back or top of the permanent down light according to your needs. It is recommended to align the light tightly with the edge of the fixture at right angles to the wall, and then press it firmly to stick it firmly. It can also be installed and fixed with screws



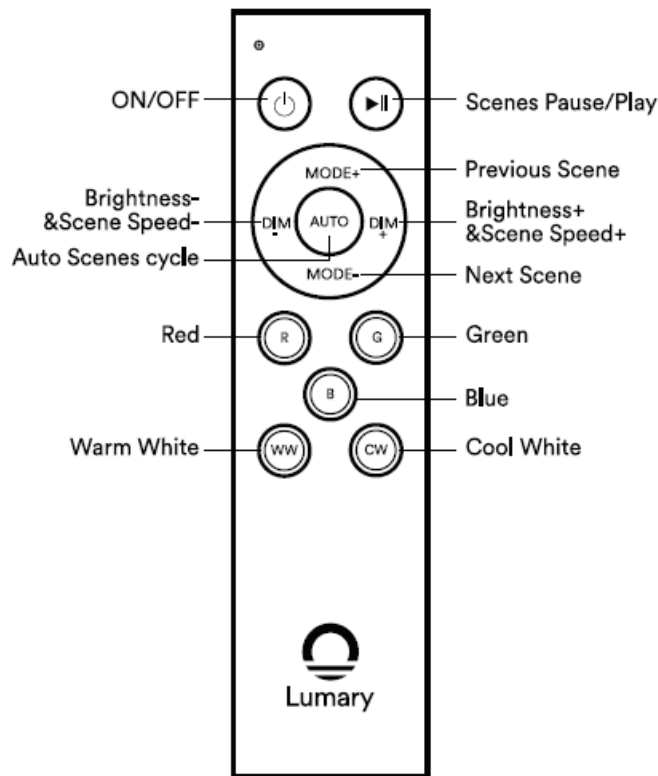
4. After the installation is completed, you can use the wire clip provided in the accessory package to fix the wire at the tail of the down light.



How To Connect Remote Controller?

1. Step1: Eaves lights completed the Wifi connection.
2. Step2: Turn off the power supply and turn on again.
3. Step3: Press the ON/OFF button for 3-5 seconds, until the led lights flashes.
4. Step4: Press any button to control properly.

Remote Controller Introduction



FCC Statement

This device complies with part 15 of the FCC Rules. Operation is subject to the following two conditions:

1. This device may not cause harmful interference, and
2. This device must accept any interference received, including interference that may cause undesired operation.

This equipment has been tested and found to comply with the limits for a Class B digital device, pursuant to part 15 of the FCC Rules. These limits are designed to provide reasonable protection against harmful interference in a residential installation. This equipment generates, uses and can radiate radio frequency energy and, if not installed and used in accordance with the instructions, may cause harmful interference to radio communications. However, there is no guarantee that interference will not occur in a particular installation. If this equipment does cause harmful interference to radio or television reception, which can be determined by turning the equipment off and on, the user is encouraged to try to correct the interference by one or more of the following measures:

- Reorient or relocate the receiving antenna.
- Increase the separation between the equipment and receiver.
- Connect the equipment into an outlet on a circuit different from that to which the receiver is connected.
- Consult the dealer or an experienced radio/TV technician for help.

Caution: Any changes or modifications not expressly approved by the party responsible for compliance could void the user's authority to operate the equipment. This transmitter must not be co-located or operating in conjunction with any other antenna or transmitter. and obtaining a separate FCC authorization.

RF Exposure Considerations

Smart String Down Light


This device complies with FCC radiation exposure limits set forth for an uncontrolled environment. This equipment should be installed and operated with minimum distance 20cm between the radiator & your body.

RF Remote Controller

This device complies with FCC radiation exposure limits set forth for an uncontrolled environment. This equipment can be used as portable exposure without any restriction.

Lumary Smart String Downlights

Documents / Resources

	<p>Lumary RC-12K-RF Smart String Downlights [pdf] User Guide RC-12K-RF Smart String Downlights, RC-12K-RF, Smart String Downlights, String Downlights, Downlights</p>
---	---

References

- [User Manual](#)

Manuals+, Privacy Policy

This website is an independent publication and is neither affiliated with nor endorsed by any of the trademark owners. The "Bluetooth®" word mark and logos are registered trademarks owned by Bluetooth SIG, Inc. The "Wi-Fi®" word mark and logos are registered trademarks owned by the Wi-Fi Alliance. Any use of these marks on this website does not imply any affiliation with or endorsement.