




## LUDLUM 44-183-1 Shielded GM Detector Instructions

[Home](#) » [LUDLUM](#) » LUDLUM 44-183-1 Shielded GM Detector Instructions 

*LUDLUM 44-183-1 Shielded GM Detector Instructions*

**Ludlum Model 44-183 and 44-183-1  
Shielded GM Detector**

May 2023



**LUDLUM MEASUREMENTS, INC**  
501 OAK STREET, P.O. BOX 810  
SWEETWATER, TEXAS 79556  
325-235-5494, FAX: 325-235-4672



## Contents

- [1 GENERAL](#)
- [2 SPECIFICATIONS](#)
- [3 PARTS LIST](#)
- [4 DRAWINGS AND DIAGRAMS](#)
- [5 Documents / Resources](#)

## GENERAL

The Model 44-183 is a lead shielded GM (Geiger-Mueller) detector capable of detecting gamma radiation. The Model 44-183-1 is the same as the Model 44-183, except that it uses a different GM tube with a different range (see specifications).

The lead shield attenuates the background and unwanted radiations, providing a collimated response.

Three nylon feet hold the unit off the surface to protect the window and holder from contamination. The nylon feet are secured by screws, which can be easily replaced if they become contaminated.

The GM detector is contained in a housing, which may be removed from the lead shield. Removing the three screws fastening the nylon feet to the lead base allows the detector to be removed from the shield.

The GM detector operates at 550 volts. The recommended instrument input sensitivity is approximately 30 mV or higher to keep the detector from double pulsing. The double pulse is caused by the size of the after pulse exceeding the instrument threshold.

The Model 44-183 or 44-183-1 will operate with any of the Ludlum instruments or equivalent instruments that

provide 550 V and an input sensitivity of approximately 30 mV or higher.

## **SPECIFICATIONS**

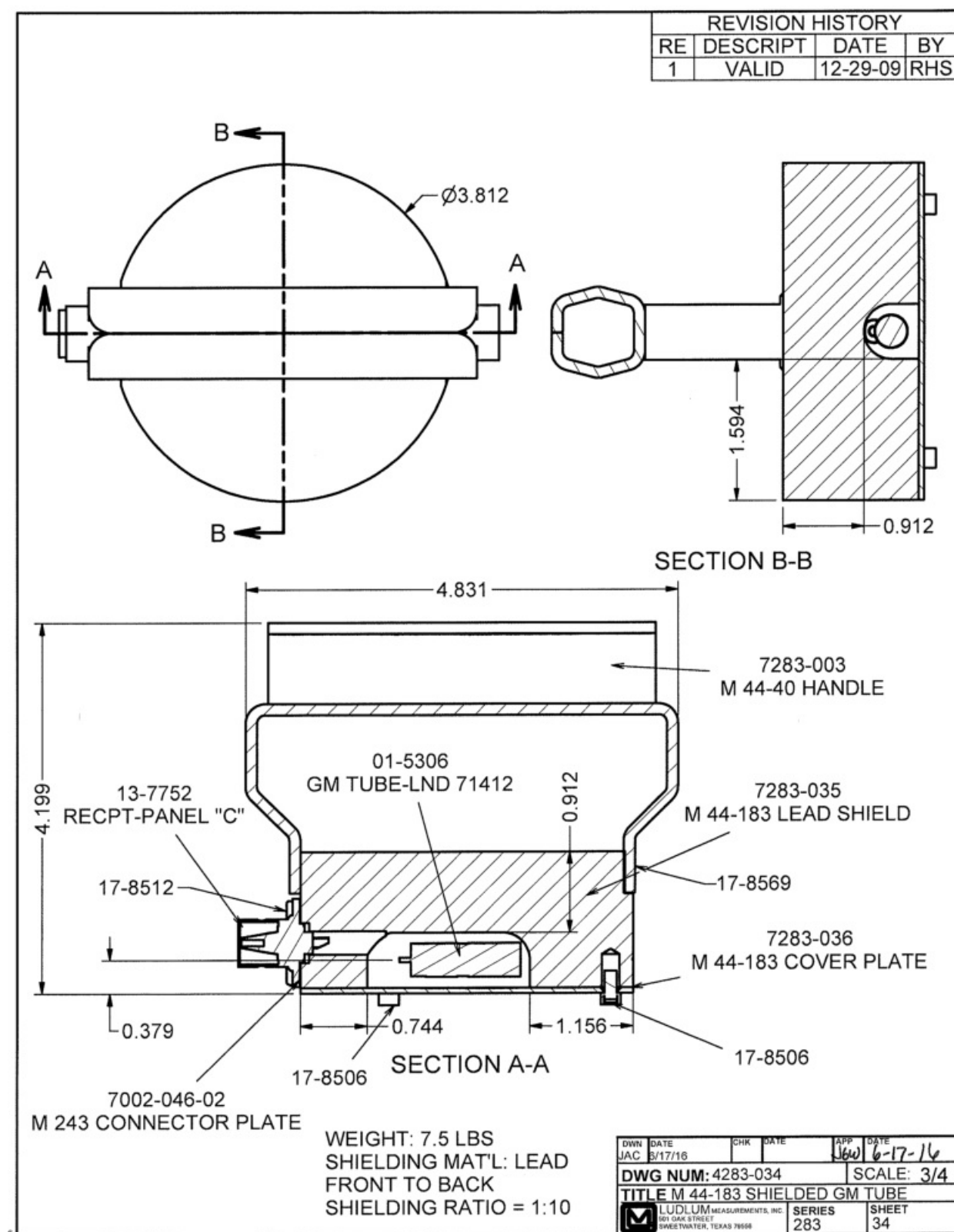
- DETECTOR RANGE WITH DTC:  
For Model 44-183: 10 Sv/h to 100 mSv/h (1 mR/hr to 10 R/hr)  
For Model 44-183-1: 40 Sv/h to 400 mSv/h (4 mR/hr to 40 R/hr)
- DETECTOR RANGE WITHOUT DTC:  
For Model 44-183: 10 Sv/h to 20 mSv/h (1 mR/hr to 2 R/hr)  
For Model 44-183-1: 40 Sv/h to 60 mSv/h (4 mR/hr to 6 R/hr)
- DETECTOR: GM, energy-compensated
- ENERGY RESPONSE: within 15% of true value
- SENSITIVITY ( 137 Cs): 0.17 cps/ Sv/h (100 cpm/mR/hr)
- FRONT-TO-BACK SHIELD RATIO ( 137 Cs): 10:1
- H.V. OPERATING RANGE: 550 Vdc
- OPERATING VOLTAGE: recommended 550 V
- INPUT SENSITIVITY: -30 mV 10 mV
- DEAD TIME: typically 50 microseconds
- CONSTRUCTION: aluminum and lead with powder-coated finish
- CONNECTOR: series "C"
- TEMPERATURE RANGE: -20 to 50 °C (-4 to 122 °F)
- SIZE: 10.7 x 12.2 x 12.7 cm (4.2 x 4.8 x 5.0 in.) (H x W x L)
- WEIGHT: 3.3 kg (7.3 lb)

## **PARTS LIST**

Qty.	Description	Part No.
UNIT	Completely Assembled Model 44-183 GM Detector	47-3758
1	GM TUBE (LND 71412)	01-5306
1	LABEL-SERIAL NUMBER BLANK	03-6008
1	LABEL-CONTAINS LEAD	03-6127
1	RES-3.3 MEG 1/4W 5% <sup>^</sup> CF 1/4	10-7044
1	RECPT-UG568/U PANEL C F	13-7752
3	SCREW-6-32 X 1/4 MTL CORE	17-8506
4	SCREW-4-40 X 3/8 BH*	17-8512
4	SCREW-6-32 X 3/8 FH*	17-8569
4	INSERT- E-Z-LOK 4-40	20-9031
7	INSERT- E-Z-LOK 6-32 329-006	20-9066
3	WIRE-#22AWG RED 2 65/40 SILICONE	21-8550
3	WIRE-#22 BLACK UL1430*	21-9413
1	SHRINK-GPF-135 3/32 CLR*	22-9540
1	MODEL 243 CONNECTOR PLATE	7002-046-(
1	MODEL 44-40 HANDLE	7283-003
1	MODEL 44-183 LEAD SHIELD	7283-035
1	MODEL 44-183 COVER PLATE	7283-036
UNIT	Completely Assembled Model 44-183-1 GM Detector	47-4123
1	GM TUBE (LND 71616)	01-5298

## DRAWINGS AND DIAGRAMS

Model 44-183 Shielded GM Tube, Drawing 283 x 34



## Documents / Resources

<small>LUDLUM MEASUREMENTS, INC.</small> <small>1001 OAK STREET</small> <small>DALLAS, TEXAS 75068</small>	<a href="#">LUDLUM 44-183-1 Shielded GM Detector</a> [pdf] Instructions 44-183, 44-183-1, 44-183-1 Shielded GM Detector, Shielded GM Detector, GM Detector, Detect or
--	--