



LUDLUM 3003 Multi Detector Radiation Meters Instructions

[Home](#) » [LUDLUM](#) » LUDLUM 3003 Multi Detector Radiation Meters Instructions 

Contents

- [1 LUDLUM 3003 Multi-Detector Radiation Meters](#)
- [2 GENERAL](#)
- [3 PROCEDURE](#)
- [4 Documents / Resources](#)
- [5 Related Posts](#)



LUDLUM 3003 Multi-Detector Radiation Meters



GENERAL

The newest generation of Model 3000 series instruments (Gen 2) has greater capabilities than its predecessors. With this greater capability comes the need to store more information than ever before. As a result, new procedures are needed to update instrument firmware in the field.

WARNING

The Ludlum LUMIC Firmware Updater is free to our customers and may be used to update the firmware on particular instruments to add or change currently available features. It is important to note that the changes may or may not be able to be reversed. While Ludlum Measurements has taken great care to develop firmware updates that will not affect current instrument calibration, it is still recommended that all firmware updates be performed prior to instrument recalibration. As a result, if you have any concerns before proceeding, contact your local sales representative or Ludlum Measurements, Inc at 800-622-0828.

PROCEDURE

Equipment Required:

- Ludlum LUMIC Firmware Updater (available for free from the Ludlum Measurements, Inc. website at the link provided below)
 - https://ludlums.com/images/stories/firmware_updates/LUMIC_FirmwareUpdater_Installer.msi)
- USB cable A male to A male (Ludlum PIN 22-9150)
- Text Editor

1. Install the latest version of Ludlum LUMIC Firmware Updater.
2. Turn on the device to be updated.
3. Connect the USB cable between the device and computer.
4. Wait until the USB driver has been successfully installed. (This may take a short time, or up to 5 minutes.)

5. Open the Lumic Firmware Updater and select the "Model 3xxx Series" from the 'Connected instrument' box.
6. Select File T, Save Parameters to a File and be sure to name the parameter file something unique. (There will be a pause as it connects and retrieves all of the appropriate information.)

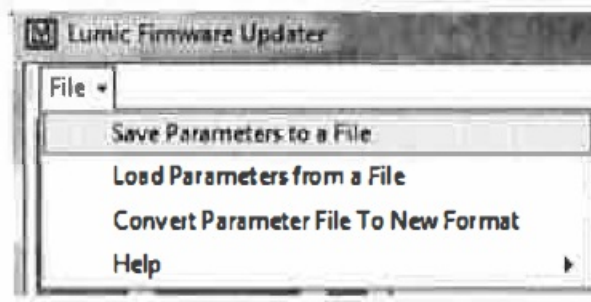
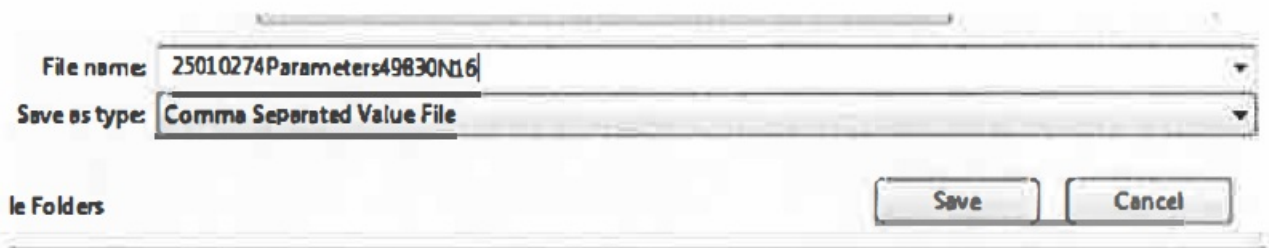


Figure 1 Save Parameters to a File



7. Open the comma-separated value file, that was just created, using a text editor and search for the following parameters and record the results:

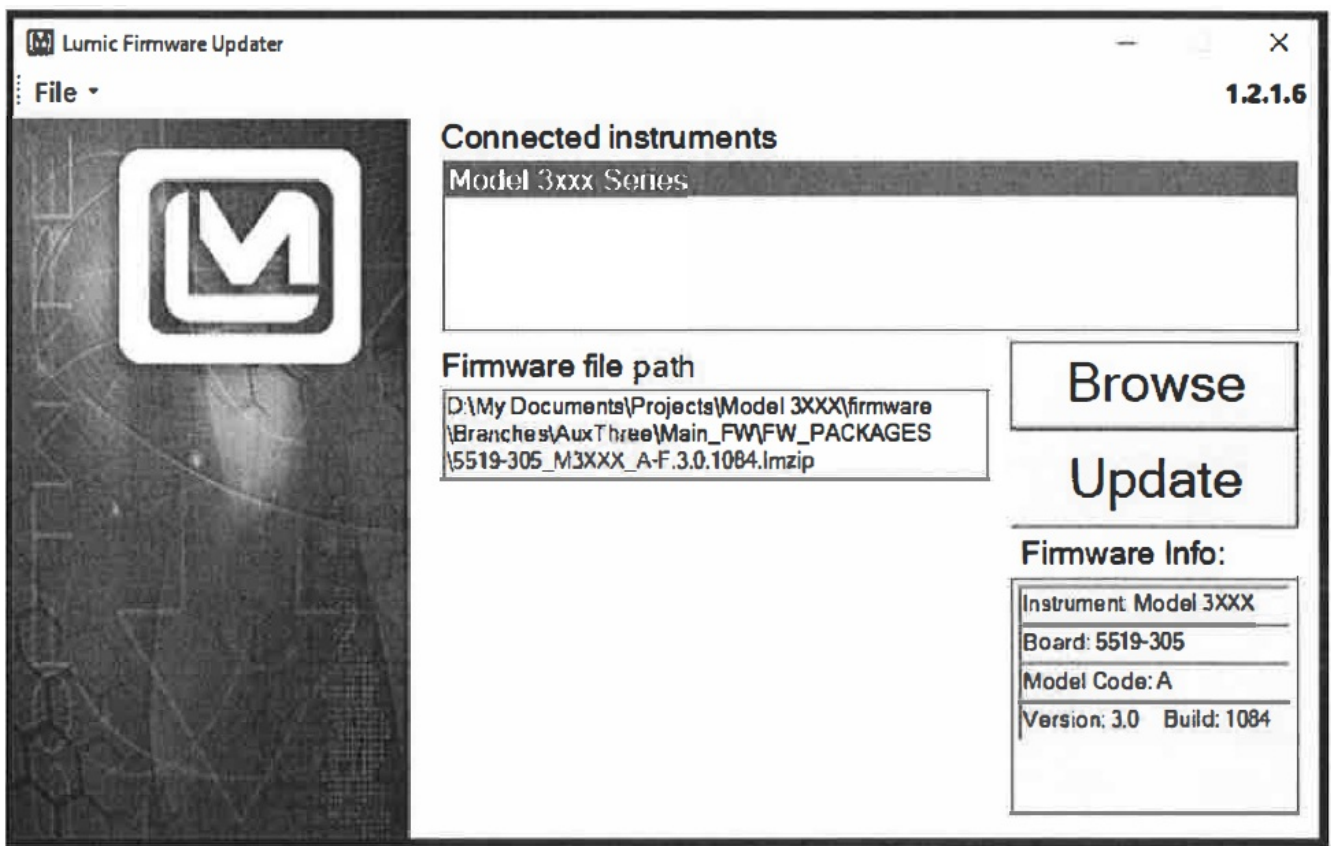
- Dev_FW(F.2.I.1000, F.3.0.1084, etc.)
 - Dev_HW[0]_Name (5519-001, 5519-305, etc.)
- Note:** Leave the file open as it will need to be edited.

- Dev_Cnt_AudioMode,Off
- Dev_Cnt_DisplayMode,Timer
- Dev_Det_Retain,On
- Dev_DIPSw[0],0
- Dev _DIPSw[I] ,0
- Dev_FW,F.3.0.1084
- Dev_HW[0]_Ch,2
- Dev _HW[I] _Ch, 1
- Dev_HW[2]_Ch,0
- Dev _H\oJ[0]_Name, 5519-305
- Dev_HW[I]_Name,5519-187
- Dev_ HW [2]_Name, N/ A
- Dev_HW[0]_Port,0
- Dev_HW[I]_Port, 1
- Dev H\•Jr 2 I Port, 255

8. If the Dev _FW value determined in step 7(a) is 2.0.xxxx or less, stop now and contact your sales representative or Ludlum Measurements, Inc. before proceeding.
9. Edit the file from step 7.
 - Save the parameter file a second time with a new name that will help indicate that the file has been edited. (Upon completion, two copies of the same file will be saved on the computer; however, this file will


now be edited.)

- Return to the first line of the file.
 - Search for 'Dev_' to find the beginning of the device parameters, skipping the detector parameters ('DetMem[x] _ ... ') in the process.
 - Delete all remaining lines of the file, leaving only the list of parameters beginning with 'DetMem[x] _ ' as well as time and date.
 - Save the file.
10. From our website, (<https://ludlums.com/products/all-products/product/model-3000#firmware-updates>) download the latest version of firmware associated with your instrument and save the desired new firmware file to your computer. Please note that the value determined in Step 7 is the printed circuit board number that will be needed when downloading the appropriate firmware. (ex. 5519-305_M3XXX_A-F.3.0.1084.lmzip)
11. Select Browse on the main screen and select the new firmware file to be loaded from step 10. Once the desired firmware is selected, click Open.



12. Select the Update button on the main screen.
- Once the file has finished loading, the instrument will restart and the device will disappear from 'Connected instruments' on the Lumic Firmware Updater screen.
13. When the instrument reappears on the Lumic Firmware Updater screen, select the "Model 3xxx Series" from the 'Connected instruments' box.
14. Select File T, Load parameters from a file.
15. Select the parameter file saved in step 9 (the edited file) and select Open.
- Note:** No error messages should pop up. If they do, it may be an indication of a problem with the saved data or the instrument. For instance, the previously saved value may now be outside of the available parameter limits for the latest firmware release and the parameter will need to be reconfigured before proceeding. Stop and contact your local sales representative or Ludlum Measurements, Inc. if you have any concerns.
16. Review parameters and instrument operation including performing a simple check source test to confirm instrument operability.

Documents / Resources

	<p>LUDLUM 3003 Multi Detector Radiation Meters [pdf] Instructions</p> <p>3003, 3003i, Multi Detector Radiation Meters, Detector Radiation Meters, Radiation Meters, 3003, Meters</p>
---	---