



LUCiDE 27888 JUSTIN Rechargeable Table Lamp Instruction Manual

[Home](#) » [LUCiDE](#) » LUCiDE 27888 JUSTIN Rechargeable Table Lamp Instruction Manual 

LUCiDE 27888 JUSTIN Rechargeable Table Lamp Instruction Manual



Thank you for purchasing a Lucide original!

This manual will hopefully guide you easily through the installation process. We aim to inspire and illuminate our clients by offering trendy, high-quality and affordable lighting.

Welcome to the community of #illuminatesyourworld

General

Dimensions LxWxH: 11cm x 11cm x 38cm

Main material: Aluminum

Color: Black

Style: Modern

Weight: 1,00kg

Contents

[1 Specifications](#)

[2 Dimensions](#)

[3 Installation Instructions](#)

[4 Safety Instructions for outdoor items](#)

[5 Explanation of the symbols which can appear on the fixture](#)

[6 Documents / Resources](#)

[6.1 References](#)

[7 Related Posts](#)

Specifications

Dimmable: Yes

Light direction: Uplight & Downlight

Adjustable in height: Not In Height Adjustable

Directional: Not Directional

Cable: Yes, Cable With Plug On Product

Cable length: 120cm

Sensor: Without Sensor

Control: Dimmer – On The Product

Power supply: Battery pack

IP-Class: 54

Electric Class: 3

Number of light sources: 1

Lamp socket: Integrated LED

Maximum wattage: 2,2W

Power requirements: 220-240V~50Hz

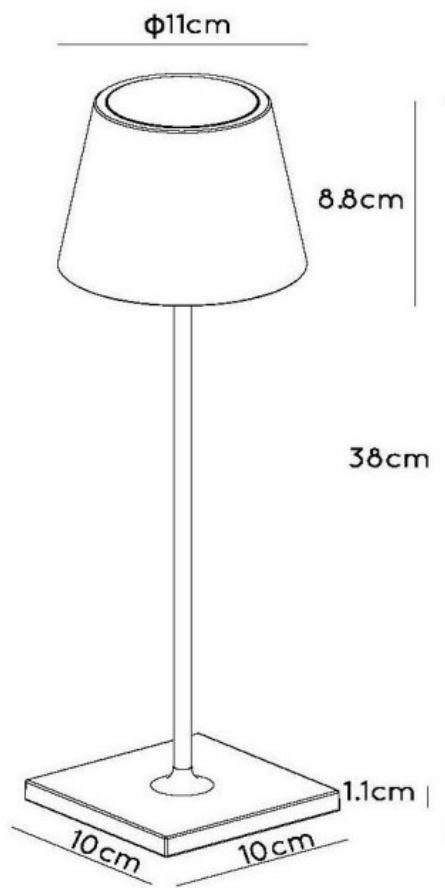
Lumen: 154Lm

Colour temperature: 2700K

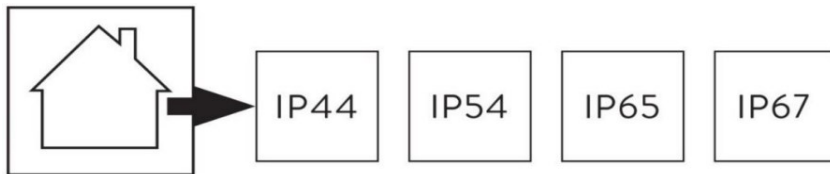
Expected lifetime: 15000h

Warranty: 3 Years

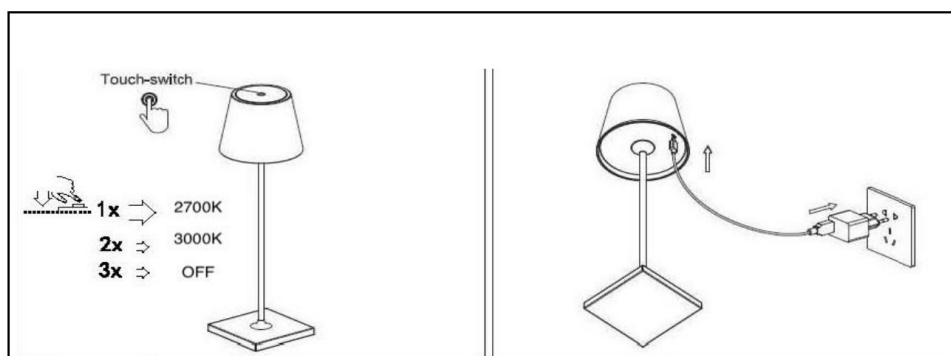
Dimensions



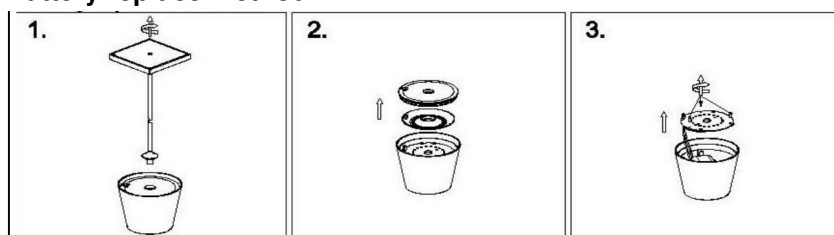
The explanation of the IP ratings can be found in the safety instructions.

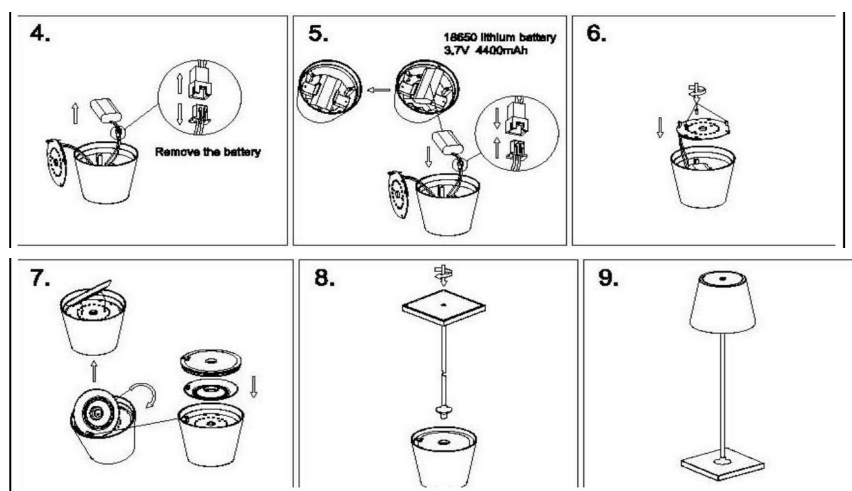


Installation Instructions



Battery replace method:





Safety Instructions for outdoor items

Please read this notice carefully and keep it during the lifetime of this product. Follow the instructions for a safe and correct installation and functioning of the light fixture. The manufacturer does not accept any responsibility for damage caused by improper installation and service. Installation should always be done by a qualified electrician. Always isolate the power before commencing installation, maintenance or repair. In case of doubts, please contact a qualified electrician. Please pay attention to locations where the item can be installed (indoor, outdoor, bathroom (for outdoor and bathroom installation, please see further). Indoor items cannot be used in humid places. Do not put the item in contact with water or any liquids or inflammable products. Always respect the minimal distance (indicated on the light) to inflammable products.

During installation, make sure that the cables will not be squeezed or damaged by sharp edges. If the external flexible cable is damaged, it needs to be replaced exclusively by the manufacturer, his service agent, or a qualified electrician.

This is to avoid all risks. Because the temperature of the item and the bulbs can get very high, they must cool down before being touched. Always use the correct bulb (respect type and maximal wattage as indicated on the product).

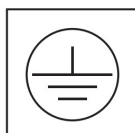
Explanation of the symbols which can appear on the fixture



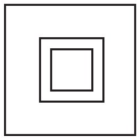
This item is only suitable for indoor use, exclusive bathroom (except if a higher IP degree permits that the item can be used in the bathroom).



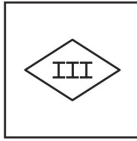
Legislation requires that all electrical and electronic equipment must be collected for reuse and recycling. Electrical and electronic equipment marked with this symbol indicating separate collection of such equipment must be returned to a municipal waste collection point.



Class I: The item has an earth connection. The earth wire (green-yellow) needs to be connected to the earth connection (marked with this symbol).



Class II: The item is double insulated and must not be connected to the earth wire.



Class III: The item is only suitable for lower voltage supply and must not be connected to the earth wire.



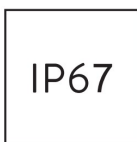
IP 44 : Splashproof



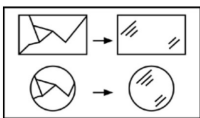
IP 54 : Dust protected and splashproof



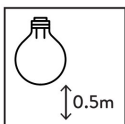
IP 65 : Dust-tight and protected against water jets



IP 67 : Dust-proof and protected against immersion for 30 minutes



If the protection glass is damaged or broken, it needs to be replaced immediately.



Please respect the minimum distance from the bulb to inflammable objects.

DISCOVER OUR COLLECTION!



Visit our website and discover our entire collection

CURIOUS ABOUT OUR BRAND?



Our brand video gives you a glimpse behind the scenes at Lucide

#ILLUMINATESYOURWORLD



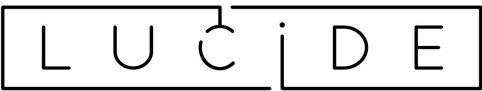
Take a look at how others around the world use Lucide products

Follow us for the latest lighting trends!



For more specifications of this product please visit
www.lucide.com

LUCIDE NV
LUCIDE NV BISSCHOPPENHOFLAAN 145, 2100 DEURNE, BELGIUM
info@lucide.com
tel: +32(0)3 366 22 04
www.lucide.com



Documents / Resources

	<p>LUCiDE 27888 JUSTIN Rechargeable Table Lamp [pdf] Instruction Manual 27888-04-30, 27888 JUSTIN Rechargeable Table Lamp, JUSTIN, Rechargeable Table Lamp, J USTIN Rechargeable Table Lamp, 27888 Rechargeable Table Lamp, Table Lamp, Lamp</p>
---	---

References

-  [Lucide lighting - Illuminates your world.](#)