



# Iuceco LEXDSSUDPIRxx GU10 Wall Light with PIR Sensor Instruction Manual

[Home](#) » [LUCECO](#) » Iuceco LEXDSSUDPIRxx GU10 Wall Light with PIR Sensor Instruction Manual 

## Contents

- [1 Iuceco LEXDSSUDPIRxx GU10 Wall Light with PIR Sensor](#)
- [2 Product Usage Instructions](#)
- [3 SPECIFICATION](#)
- [4 ACCESSORIES](#)
- [5 Documents / Resources](#)
  - [5.1 References](#)



**Iuceco LEXDSSUDPIRxx GU10 Wall Light with PIR Sensor**



### Product Information:

The Exterior Decorative Stainless Steel Up/Down GU10 Wall Light with PIR Sensor (Part Code LEXDSSUDPIRxx) is a stylish and functional lighting solution for outdoor spaces. It is designed to provide illumination while also offering motion detection capabilities.

- Input Voltage: 220-240V ~ 50/60Hz
- Lamp Compatibility: GU10
- Max Wattage: 2x35W
- IP44 Rated for outdoor use
- 2-year standard warranty

### Product Usage Instructions

Before installing and operating the Exterior Decorative Stainless Steel Up/Down GU10 Wall Light with PIR Sensor, please read and follow these instructions:

1. Ensure that the power supply is switched off before starting the installation process.
2. Choose a suitable location on the exterior wall where you want to install the light. Ensure that it is within reach of a power source and has a clear line of sight for motion detection.
3. Mount the light securely using the provided screws and brackets. Ensure that it is firmly attached to the wall.
4. Connect the light to the power supply using appropriate wiring.  
Follow local electrical codes and guidelines for safe installation.
5. **Duration Time:** The length of time that the light remains switched on after activation can be adjusted. Use the following steps to set the duration:
  1. Locate the adjustable PIR control on the light.
  2. Turn the control to the desired duration time, ranging from 15 seconds to 5 minutes.
6. **Lux Control Level:** The Lux control module detects daylight and darkness to determine when the light should

be activated. Follow these steps to adjust the Lux control level:

1. Locate the Lux control module on the light.
  2. Turn the control to the desired level, allowing the light to be activated in daylight or night according to your preference.
7. Once the installation and adjustment of duration time and Lux control level are complete, restore the power supply.
8. The Exterior Decorative Stainless Steel Up/Down GU10 Wall Light with PIR Sensor will now provide illumination and motion detection as per your settings.

If you require any technical assistance or have further questions, please contact our Tech Help Line:

- UK – 0330 0249 279
- Non UK – +44 (0)1952 238 100

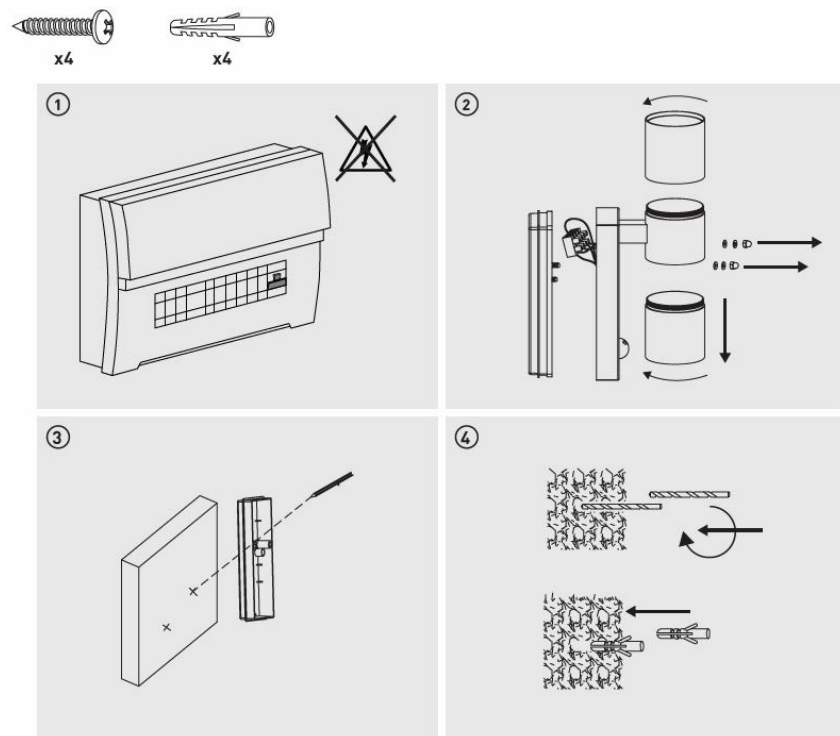
For more information or to explore our other products, visit our website at [www.luceco.com](http://www.luceco.com).

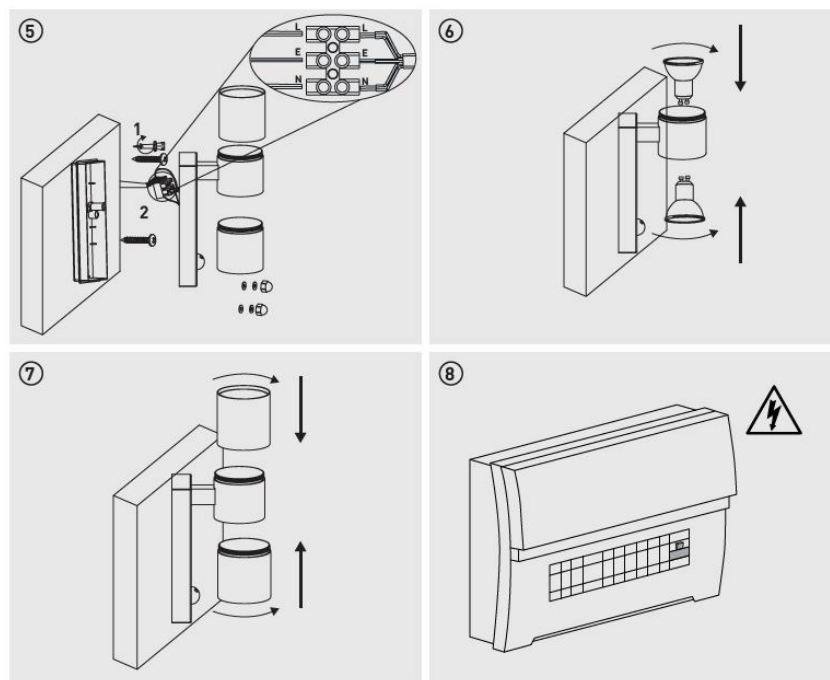
## EXTERIOR DECORATIVE STAINLESS STEEL UP/DOWN GU10 WALL LIGHT WITH PIR SENSOR

### SPECIFICATION

Part Code	Input Voltage	Lamp Compatibility	Max Wattage
LEXDSSUDPIRxx	220-240V ~ 50/60Hz	GU10	2x35W

### ACCESSORIES





Adjustable PIR control		
	MIN	MAX
Duration	10±5 secs	5 min
LUX Control	0 LUX	20000 LUX

**DURATION TIME:** The length of time that remains switched on after activation is adjustable from 15 seconds up to 5 minutes. Note: Once the lamp has been triggered by the PIR sensor any subsequent detection will start the timed period again from the beginning.

#### Tech Help Line

UK – 0330 0249 279

Non UK – +44 (0)1952 238 100

Supplied by LUCECO

Stafford Park 1, Telford, Shropshire, England, TF3 3BD

Visit our website at [www.luceco.com](http://www.luceco.com)

#### Servicio de asistencia telefónica

UK – 0330 0249 279

Non UK – +34 93 829 55 74

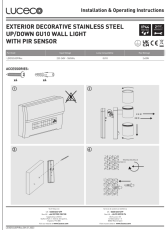
(EU) Luceco SE

C/ Bobinadora 1-5

08302 Mataró Spain

Visite nuestra web en [www.luceco.com](http://www.luceco.com)

#### Documents / Resources



[luceco LEXDSSUDPIRxx GU10 Wall Light with PIR Sensor](#) [pdf] Instruction Manual LEXDSSUDPIRxx, LEXDSSUDPIRxx GU10 Wall Light with PIR Sensor, GU10 Wall Light with PIR Sensor, Wall Light with PIR Sensor, PIR Sensor, Sensor

References

-  [Luceco | LED Lighting](#)

[Manuals+.](#)