

**LUCAS LED**  
**P1.86 LED**  
**Poster Display**  
**Solution**



# LUCAS LED P1.86 LED Poster Display Solution Instruction Manual

[Home](#) » [LUCAS LED](#) » LUCAS LED P1.86 LED Poster Display Solution Instruction Manual 

## Contents

- [1 LUCAS LED P1.86 LED Poster Display Solution](#)
- [2 Product Information](#)
- [3 Product Usage Instructions](#)
- [4 FAQs](#)
- [5 Cloud LED Poster Display](#)
- [6 Applications of LED Poster Display](#)
- [7 LED Advertising Player Features](#)
- [8 Our Solution](#)
- [9 Solution Advantages](#)
- [10 Documents / Resources](#)
  - [10.1 References](#)



**LUCAS LED P1.86 LED Poster Display Solution**



## Product Information

- **Product Name:** Cloud LED Poster Display
- **Display Type:** Indoor HD LED and Outdoor LED
- **Features:** Highly integrated hardware, high brightness, easy installation, ultra-thin, and light body
- **Application:** LED advertising display

## Product Usage Instructions

### Installation

1. Choose a suitable location for the display ensuring good visibility.
2. Mount the Cloud LED Poster Display securely on the wall or desired surface.
3. Connect the power source to the display unit.

### Content Management

1. Upload your desired content to the display player through the provided interface.
2. Organize and schedule your content playback using the included software.
3. Ensure proper connectivity for seamless content display.

### Maintenance

1. Regularly clean the display surface with a soft, dry cloth to maintain optimal visibility.
2. Check for any loose connections or signs of damage periodically.
3. Follow the manufacturer's guidelines for any troubleshooting or maintenance tasks.

## FAQs

Q: Can the Cloud LED Poster Display be used outdoors?

A: Yes, the product is designed for both indoor and outdoor use with high-brightness capabilities.

Q: How do I update content on the display?

A: Content can be updated by connecting a device to the display player and transferring files through the provided interface.

Q: What is the recommended maintenance schedule for the display?

A: It is recommended to clean the display regularly and check for any issues every month.

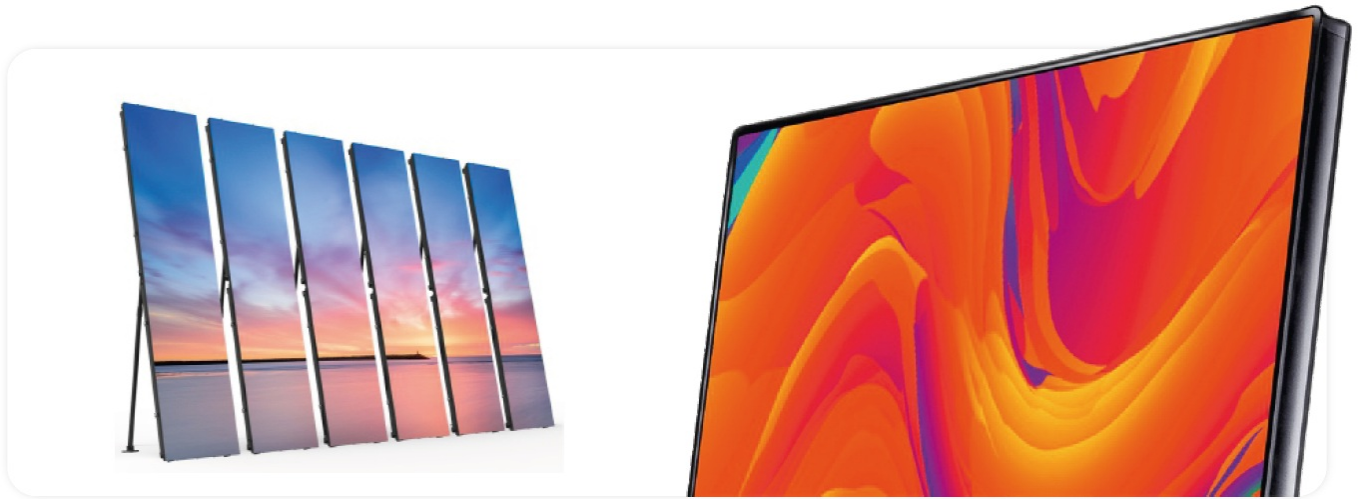
## Cloud LED Poster Display

Poster LED Display Player is a specially designed product targeting indoor HD LED advertising players with highly integrated hardware and outdoor led display player with high brightness and easy installation, ultra-thin and light body, which can be your first choice to achieve the perfect led advertising display effect.



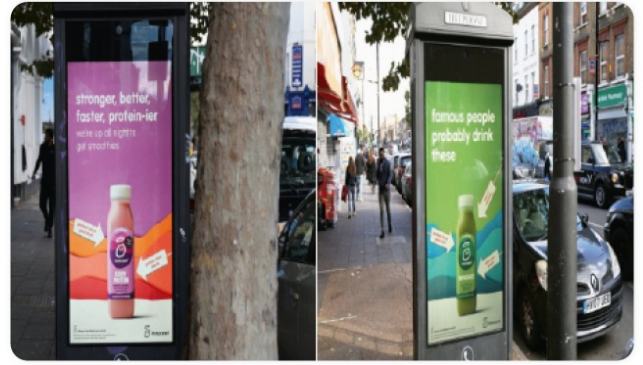
LED Poster Display embodies features including various installation solutions, easy operation, multiple communication modes, high brightness, low power consumption, and ultra-thin body to ensure stable and high-quality display effect even in bright-light venues. It is a new product that overturns traditional LCD ad players (high cost, low-quality picture, uneven brightness, heavy body, and high energy consumption), which can be widely

installed in hotels, restaurants, shopping malls, banks, government agencies, hospitals, and so on.



### Applications of LED Poster Display





## LED Advertising Player Features

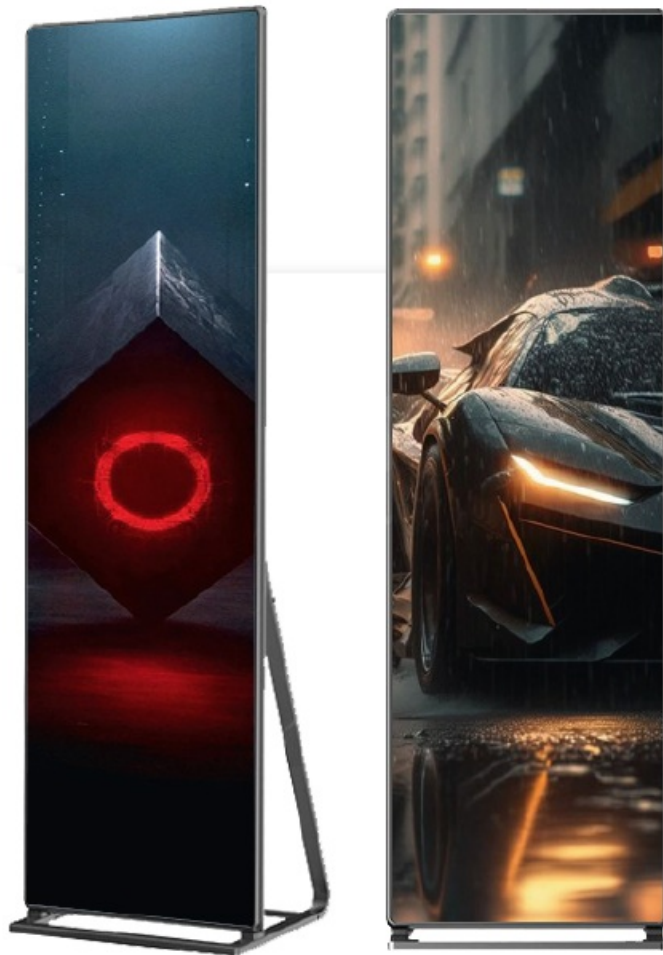
### Slim & Lightweight Design

Lucas LED Poster Screen is lightweight, and the cabinet frame and LED parts are reliable and portable. The frameless design makes the product easy to move and suitable for narrow spaces.



### Excellent Visual Display

Lucas LED Poster Screens are equipped with high-quality LEDs and Driving IC to ensure a high refresh rate and high contrast ratio. The Refresh rate is up to 2880Hz and high definition image quality with 5000:1. The brightness reaches 1000 Nits which provides the viewers with perfect display effect.



### Unique Base-Standing Bracket

The base-standing bracket can make the LED poster stand on the ground stably. The bracket is movable with 4 wheels, which makes the poster rotate freely and allows free movement in all directions.



### Multi-installation Method

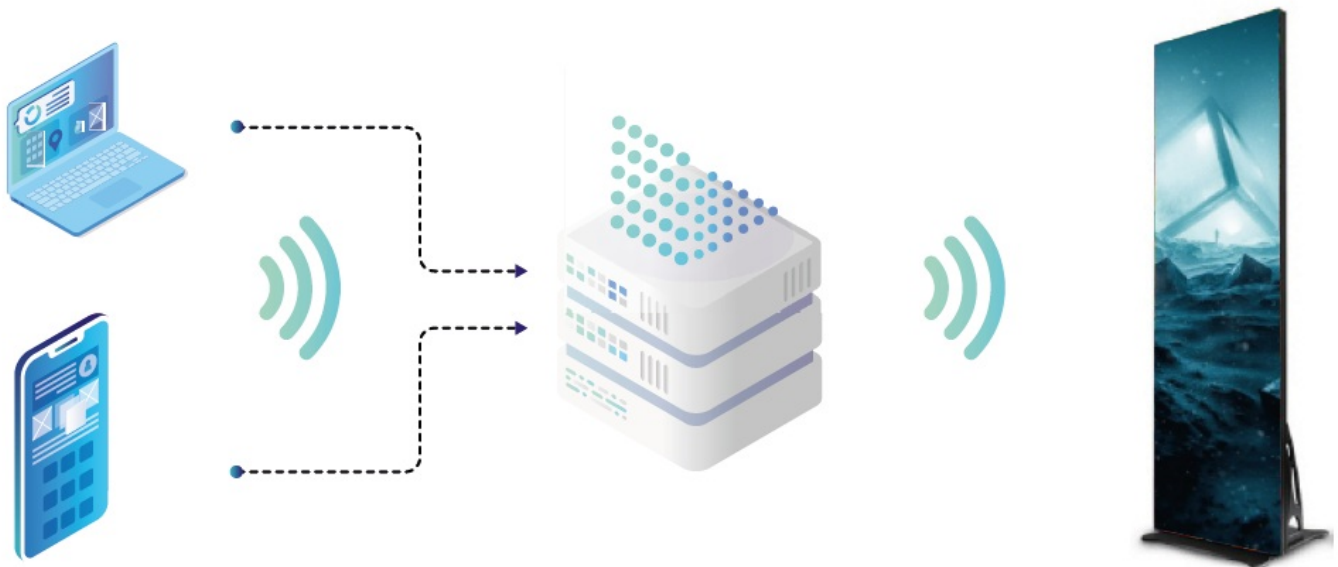
Poster LED Display supports multi-installation ways. For example, bracket-standing installation, base-standing installation, lifting or hanging installation, multi-cascade installation, and creative installation. There is no need for

the steel structure so is convenient and effective.



### Smart Cloud Management

Poster LED Display supports both synchronous & asynchronous control systems, and the contents can be updated via iPad, Phone, or Notebook. Real-time play, cross-platform information delivery, USB or WIFI support, and IOS or Android multi-devices. Besides, it can support the built-in media player to store and play videos and images in all formats.



### Our Solution

One-stop Product Provide + Cloud Management

### LED Poster Display Control Solution Process

#### Play Independently Without Interference

Usually, a mobile APP is used to release programs wirelessly or update programs via a USB flash disk.



### Simultaneous Playback of Multiple Display Screens

Realize multi-screen synchronous playback through time calibration.



### Multi-Screen Splicing Playback

Through HDMI cable link, multiple displays are spliced into one picture



Synchronize Or Play Offline



## Solution Advantages

- **No need for an external computer, offline playback**

It will play automatically when the machine is turned on, and there is no need to repeat the manual play operation.

- **Wi-Fi connection, wireless publishing**

Mobile APP updates programs, convenient to carry and easy to operate.

- **USB flash disk play**

Temporary broadcasting will not affect the original program; Support USB flash disk expansion capacity, no need to worry about not playing large file programs

- **Cluster management**

Support local area network and Internet cluster control. One mobile phone or one computer can release programs with one button.

- **Multi-screen synchronous playback**

Multiple display screens play the same picture at the same time, the effect is more shocking, and the

advertising efficiency is higher.

- **Multi-screen splicing playback**

Multiple displays can be played independently or spliced into one picture. Small screens can be spliced into large screens to meet more applications.



## Contact Information

- [www.lucasled.gr](http://www.lucasled.gr)
- Ipsiladou 6, Kozani 50100 Greece
- [info@lucasled.gr](mailto:info@lucasled.gr)
- +30 2461028584



## Documents / Resources



[LUCAS LED P1.86 LED Poster Display Solution](#) [pdf] Instruction Manual  
P1.86, P1.86 LED Poster Display Solution, LED Poster Display Solution, Poster Display Solution, Display Solution, Solution

## References

- [Lucas Led](#)
- [User Manual](#)

### Manuals+, Privacy Policy

This website is an independent publication and is neither affiliated with nor endorsed by any of the trademark owners. The "Bluetooth®" word mark and logos are registered trademarks owned by Bluetooth SIG, Inc. The "Wi-Fi®" word mark and logos are registered trademarks owned by the Wi-Fi Alliance. Any use of these marks on this website does not imply any affiliation with or endorsement.