

LPCB CSB-803 Resettable Call Point



LPCB CSB-803 Resettable Call Point Installation Guide

[Home](#) » [LPCB](#) » LPCB CSB-803 Resettable Call Point Installation Guide 

Contents

- [1 LPCB CSB-803 Resettable Call Point](#)
- [2 Features](#)
- [3 Accessories](#)
- [4 Specification](#)
- [5 Connections](#)
- [6 Wiring Diagram](#)
- [7 Attention before installation](#)
- [8 Installation](#)
- [9 Documents / Resources](#)
 - [9.1 References](#)
- [10 Related Posts](#)



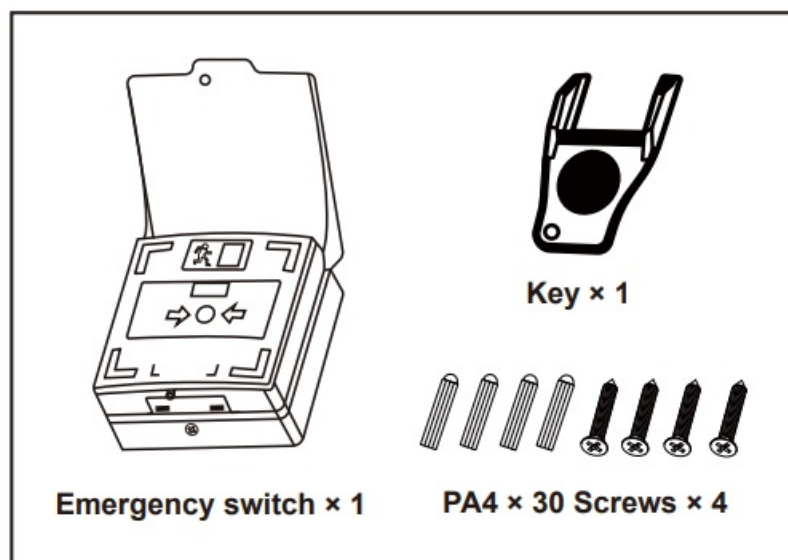
LPCB CSB-803 Resettable Call Point



Features

1. The default green color, it could be customized with other colors.
2. Resettable design, obvious indicators around the edges of the unit.
3. Press the pressing plate to enable the output function.
4. Pressing plate with status shown.
5. Reversionary key with non-slip design.
6. Built-in buzzer status to set as a silent or continuous beep. Volume is adjustable.
7. The input power range is DC12~24V. It can connect with all types of fire alarm systems.
8. Easy to assemble, 3 sets of output points to connect other equipment embedded or surface installations to select.

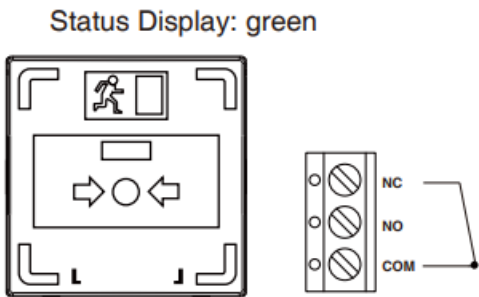
Accessories



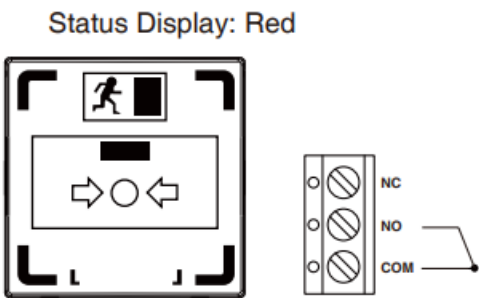
Specification

Items	Specification	Note
Power supply	DC 12V-DC 24V	±10%
Operation current	DC12V/20mA Standby/ 40mA Operation	±10%
	DC24V/20mA Standby/ 40mA Operation	±10%
Buzzer	Set as silent or continuous beep	
Indicator	Dual-color (red and green). Red indicator to set blinking or on.	
Output	Triple NO/NC/COM output	
Weight	167g	
Dimensions	90mm(L)x95mm(W)x45mm(H)	
Material	ABS, PC(transparent part)	

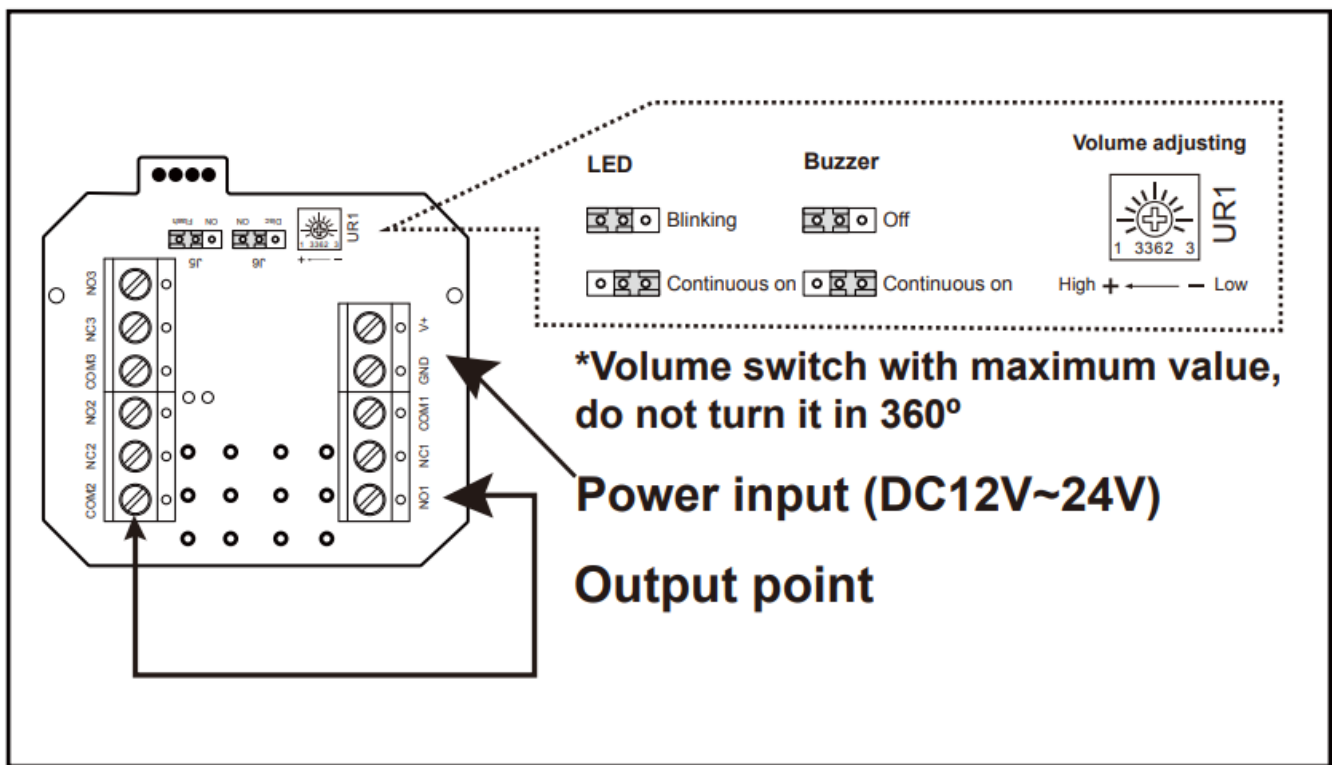
Standby



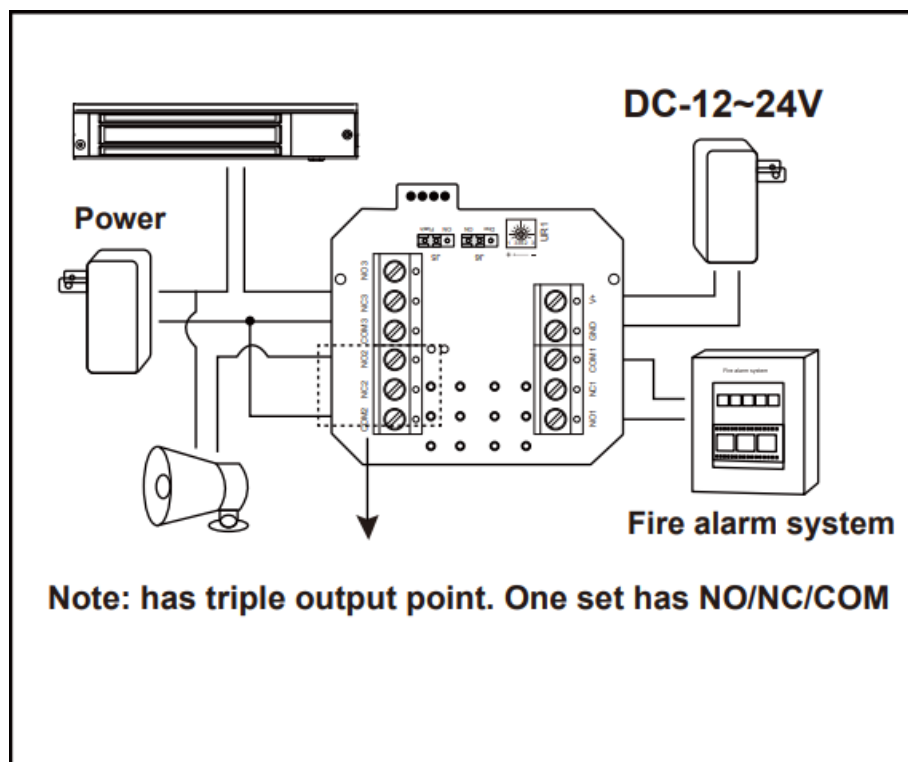
Operation



Connections

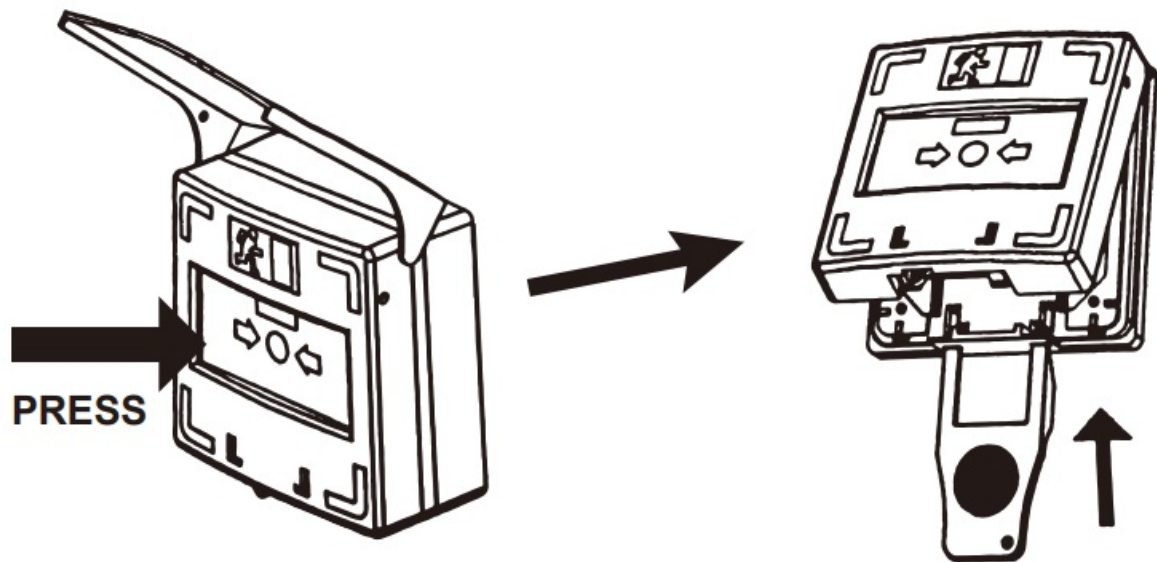


Wiring Diagram



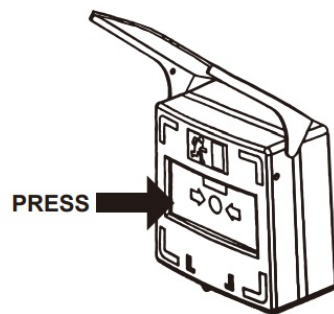
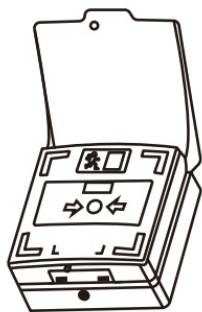
Attention before installation

Please press the pressing plate to make sure the states turn red before opening the front and middle covers to prevent the spring being popped out

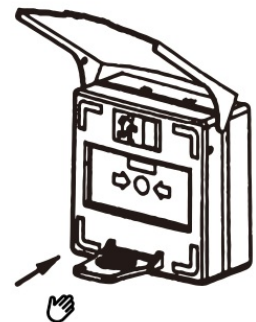


Installation

Installations for user



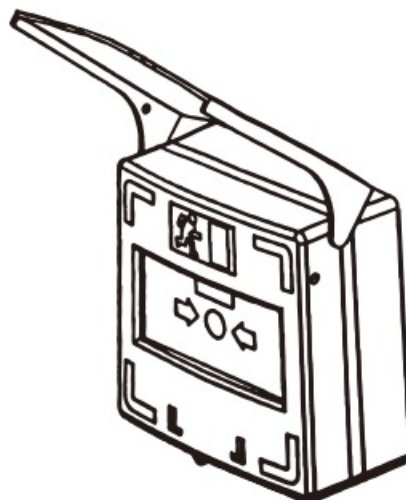
PRESS the plate to Active



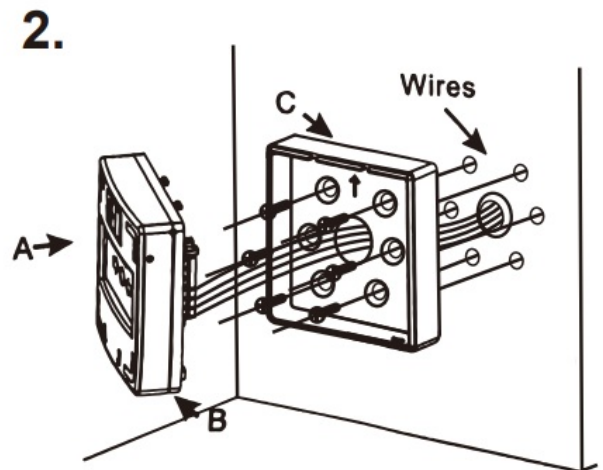
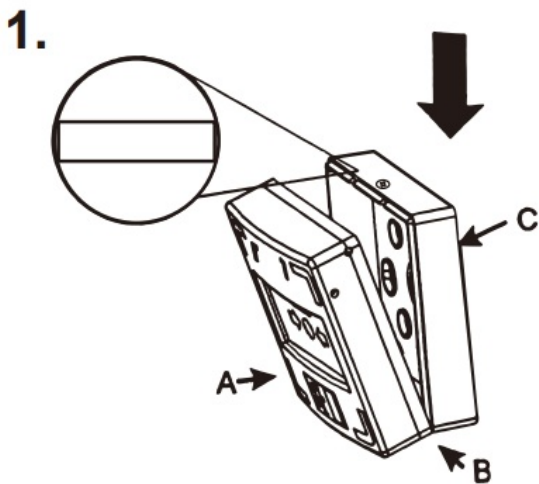
Insert the key to recover

Installation steps

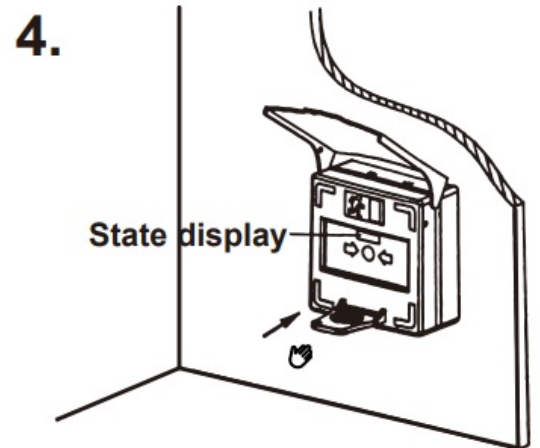
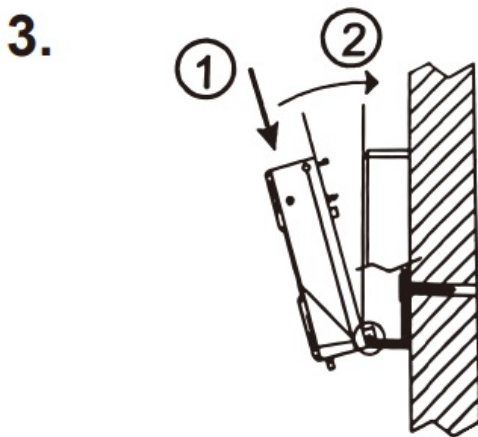
Completed



1. Unscrew the screws to remove the fasteners on B and C
2. Fix bottom cover C and connect the wires



3. Fastening the unit as in the diagram shown above locks the screw at the bottom
4. Insert the key into the key hole Pull the key out when the states turn green to complete the setting



Documents / Resources

	<p>LPCB CSB-803 Resetable Call Point [pdf] Installation Guide CSB-803, CSB-803 Resetable Call Point, Resetable Call Point, Call Point, Point</p>
--	--

References

- [User Manual](#)

[Manuals+](#), [Privacy Policy](#)

This website is an independent publication and is neither affiliated with nor endorsed by any of the trademark owners. The "Bluetooth®" word mark and logos are registered trademarks owned by Bluetooth SIG, Inc. The "Wi-Fi®" word mark and logos are registered trademarks owned by the Wi-Fi Alliance. Any use of these marks on this website does not imply any affiliation with or endorsement.