

**LOYAL**

LOYAL  
D1031C8  
Multi Device  
Vertical  
Mouse



## LOYAL D1031C8 Multi Device Vertical Mouse User Manual

[Home](#) » [Loyal](#) » LOYAL D1031C8 Multi Device Vertical Mouse User Manual 

### Contents

- 1 LOYAL D1031C8 Multi Device Vertical Mouse
- 2 Product Usage Instructions:
- 3 RGB Light Mode Switch
- 4 Bluetooth Connection
- 5 Package Include
- 6 Function
- 7 About mouse wheel direction on Mac OS
- 8 FCC Warning
- 9 FAQ:
- 10 Documents / Resources
  - 10.1 References
- 11 Related Posts

**LOYAL**

**LOYAL D1031C8 Multi Device Vertical Mouse**



## **Product Usage Instructions:**

### **Light Mode Switching:**

Click the light switching button to cycle through various RGB light modes.

### **Bluetooth Connection:**

1. Ensure Bluetooth installation steps are completed on Mac OS.
2. Turn on the mouse and initiate Bluetooth pairing by searching for the “BT5.2 Mouse” in the system preferences.

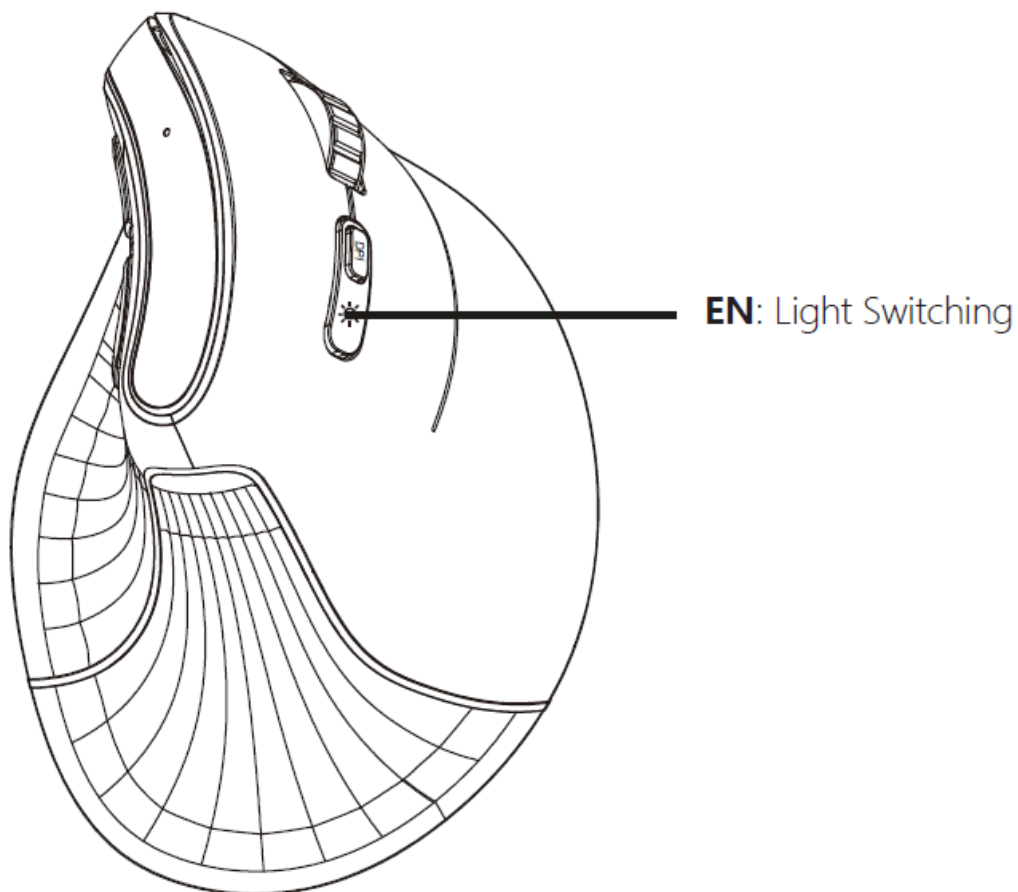
### **Mouse Wheel Direction Adjustment on Mac OS:**

1. Open computer settings and disable the Natural scrolling function to adjust the mouse wheel direction.
2. Note: Forward/back buttons may not be functional on Mac systems.

### **Charging precautions**

**Warning:**Charging limited to 5.0V voltage,don't use fast charger otherwise it may harm the mouse.We advise to use the charging cable we provided and charge the mouse through your computer port.

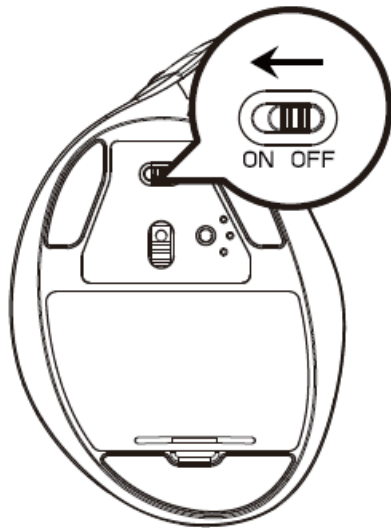
### **RGB Light Mode Switch**



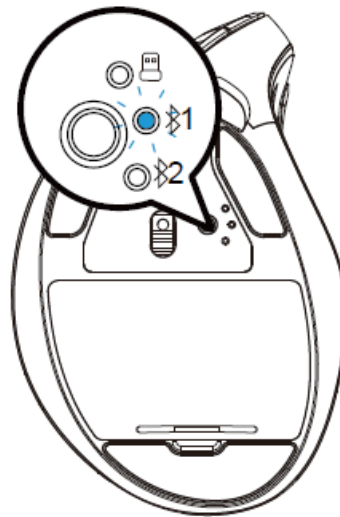
Click the light switching button to switch the light mode as below

1. Mixed Color Running Horse
2. Colorful Breathing
3. Colorful Long Light
4. Colorful Whips
5. Colorful Snake Eating
6. Night Light 1
7. Night Light 2
8. Light off

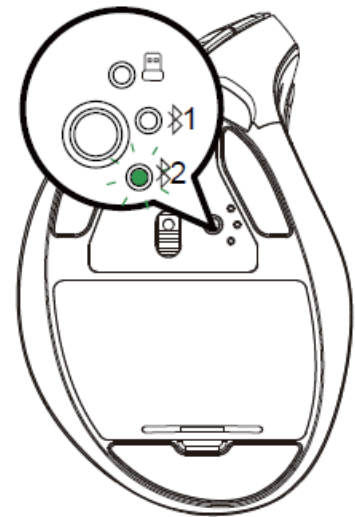
## Bluetooth Connection



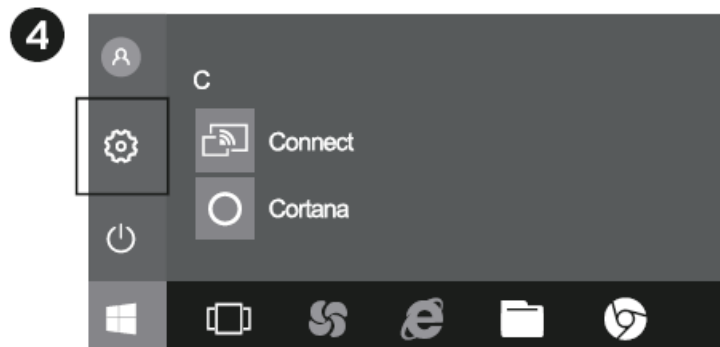
1



2



3



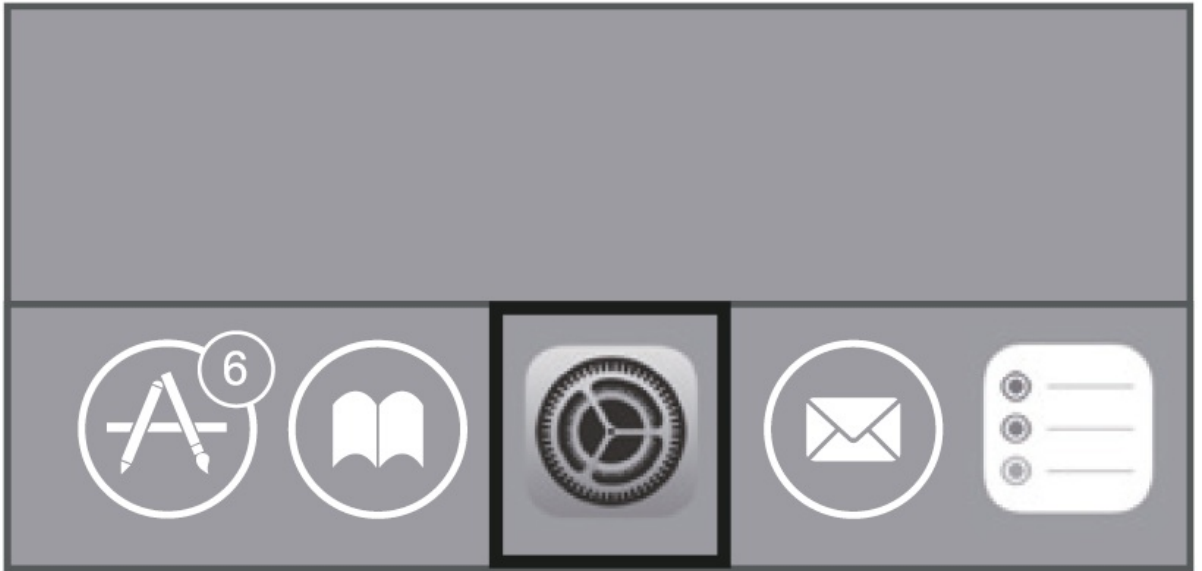
4

5

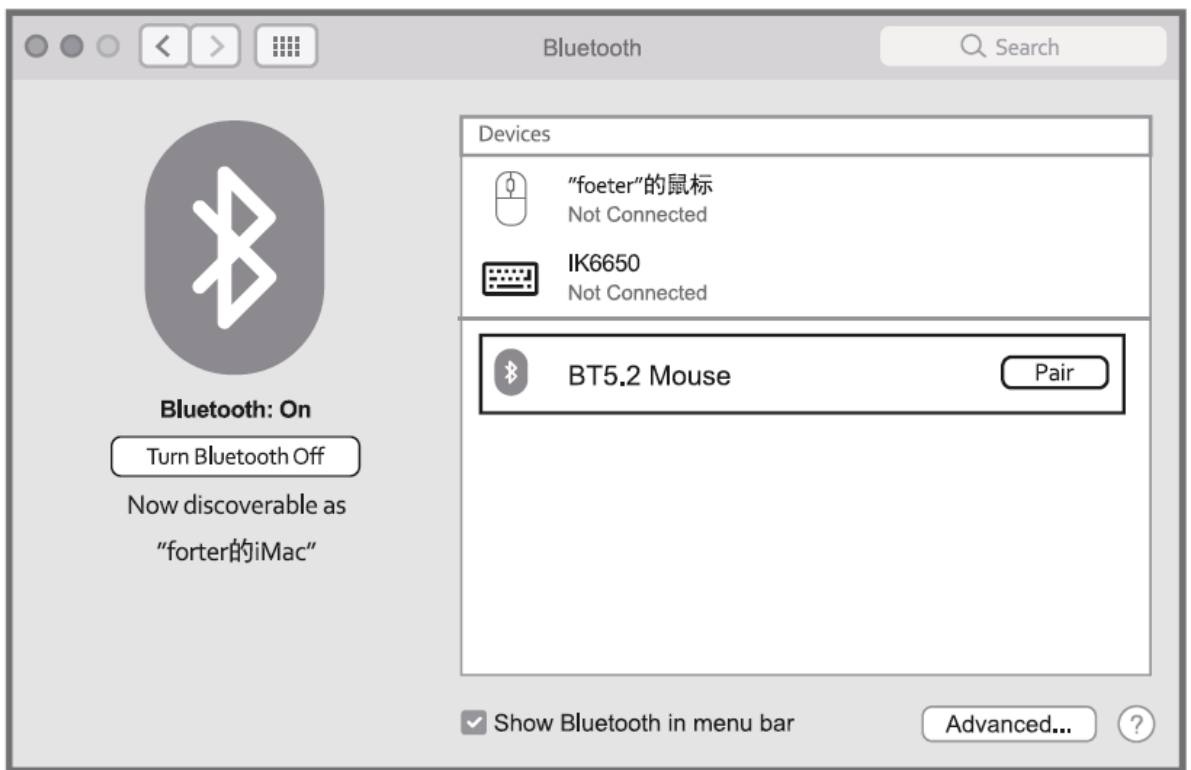


Mac OSEN:

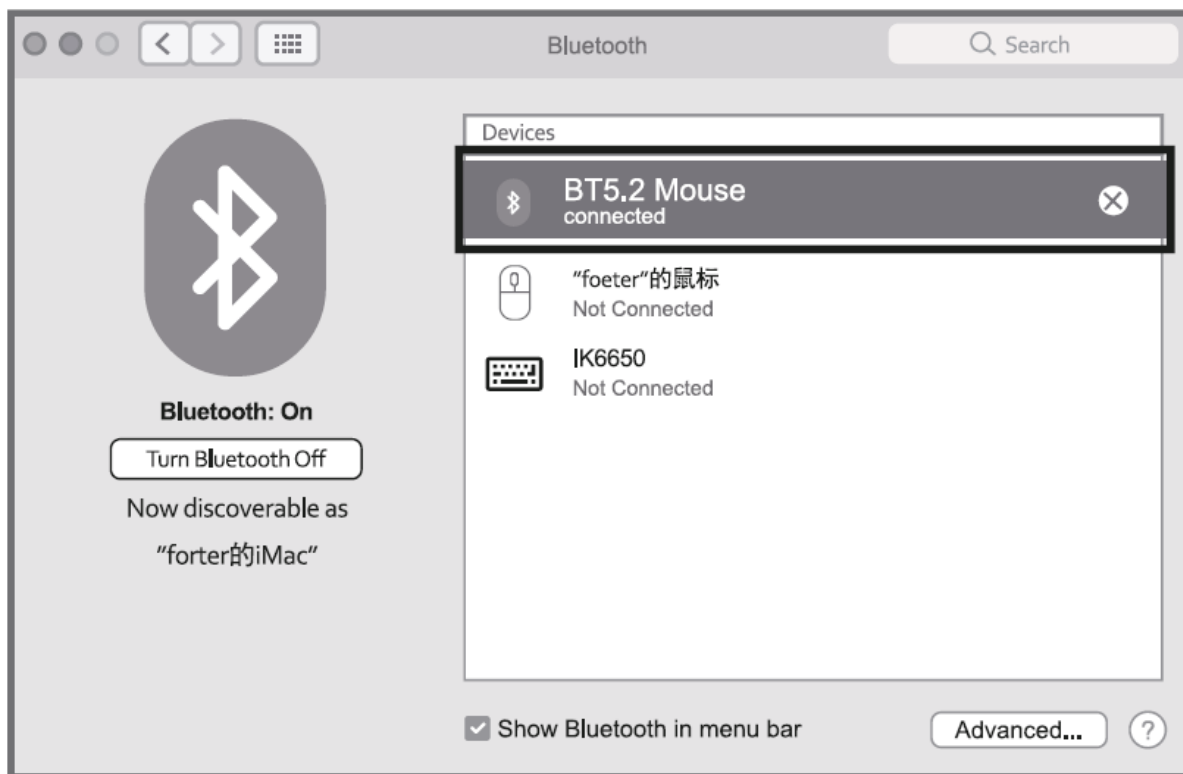
1



2

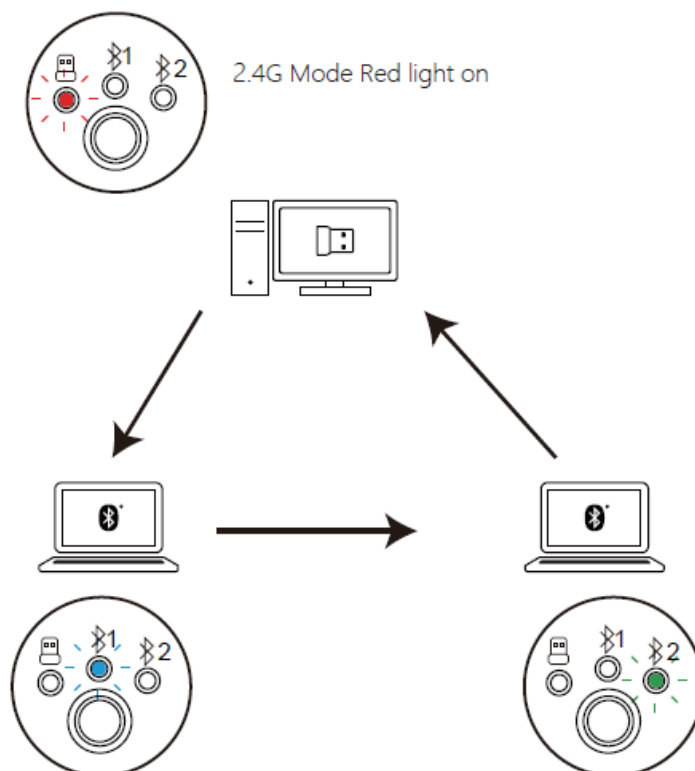


3



Please operate the Bluetooth installation steps(1~ 3) before pairing.

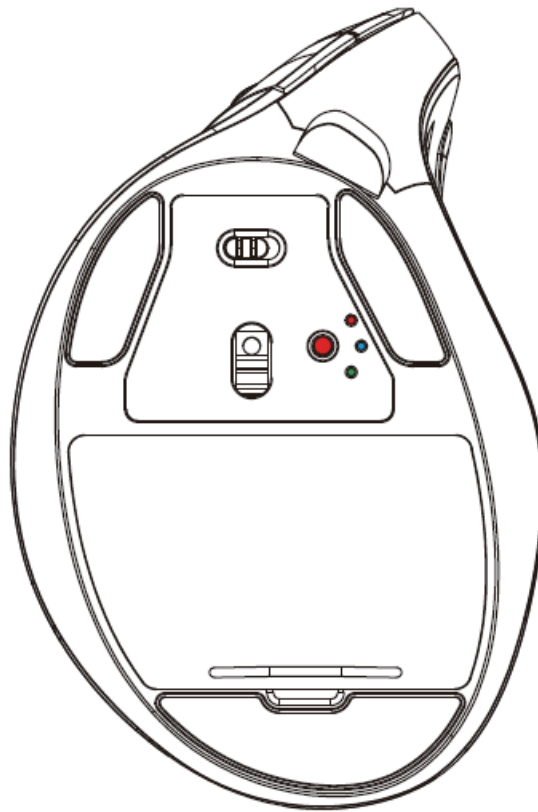
1. Click the “system preferences” button on the Mac.
2. Click the Bluetooth button on the system preference folder.
3. Search the Bluetooth “BT5.2 Mouse”, and click the Pairing button. If installed completely, the mouse could be used normally.



- Bluetooth 1 Mode Blue light on
- Bluetooth 2 Mode Green light on

**Package Include**

- 1x Wireless Mouse
- 1x User Manual
- 1x Charging Cable

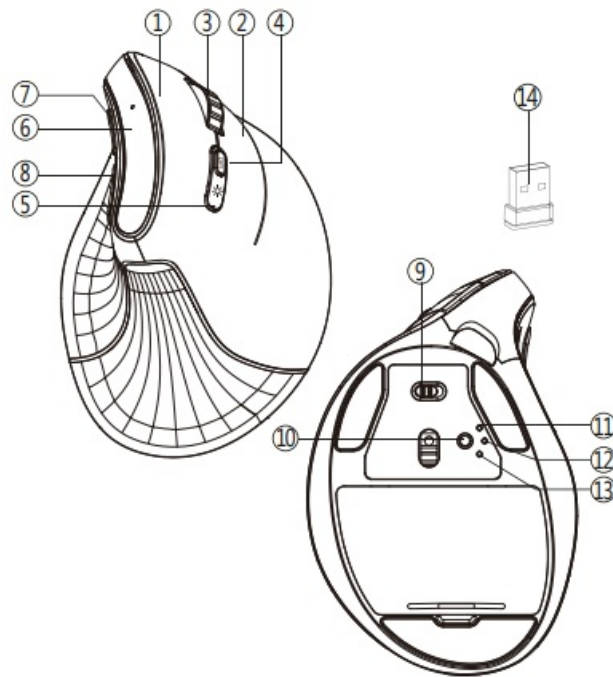


### **Change Stored Wireless Information**

Each Bluetooth can only record the information of one device, when using the same Bluetooth to connect to another new device, please clear the memory information of the Bluetooth Settings, then the Bluetooth can be found by the new device.

Clear method: as shown in the figure, click and switch to blue/green light, then hold down the button again for 3 seconds, the light will go into a rapid flashing state, at this time, the old device information has been cleared, can be found by the new device.

### **Function**

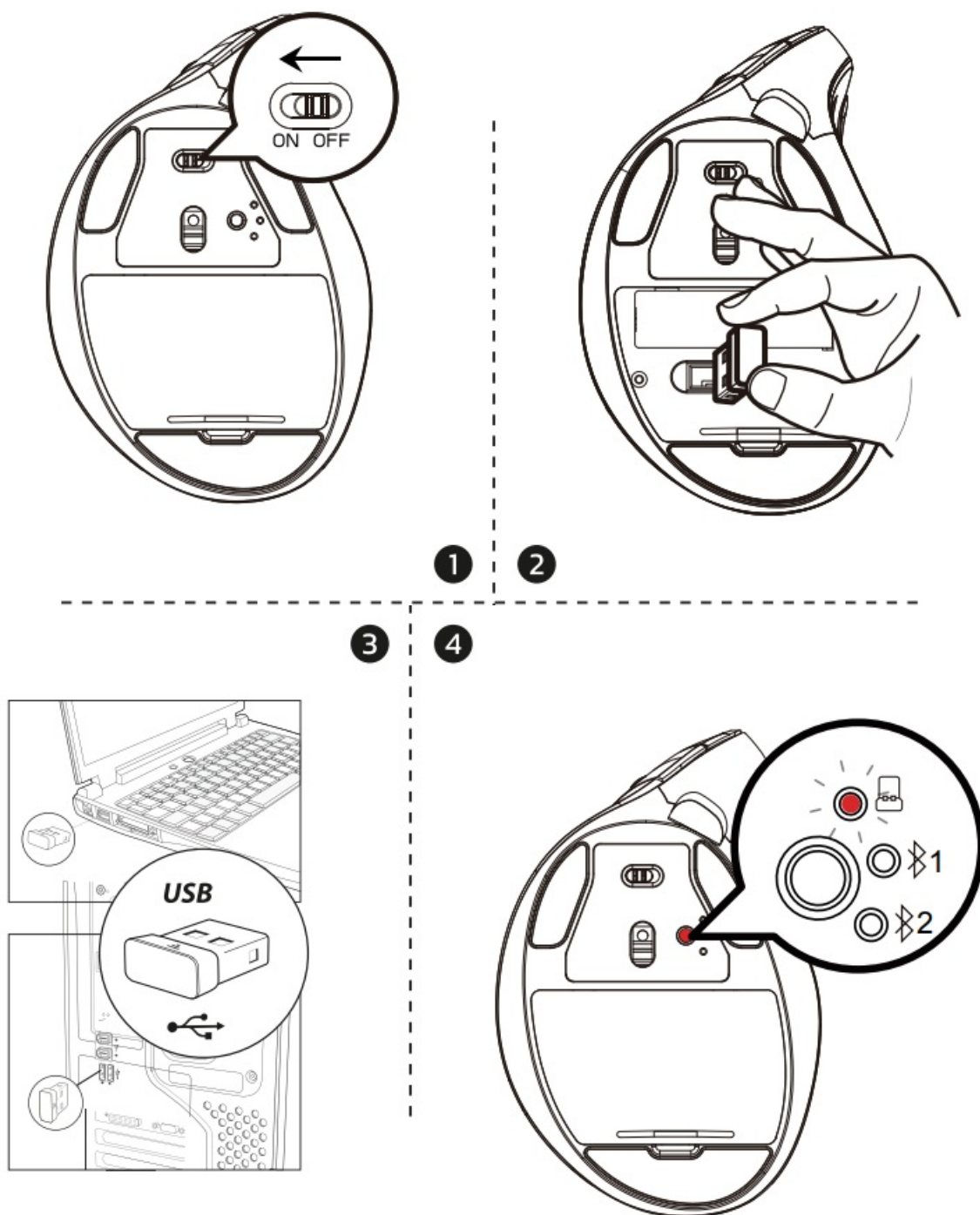


1. Left Button
2. Right Button
3. Scroll Wheel
4. DPI Button
5. Light Switching
6. DPI/Low power/Channel Indicator
7. Forward Button
8. Back Button
9. On/Off
10. Mode Switch Button
11. 2.4G Indicator
12. Bluetooth Indicator 1
13. Bluetooth Indicator 2
14. USB Receiver

**Note:**Bluetooth indicator/USB indicator flashes quickly on low battery

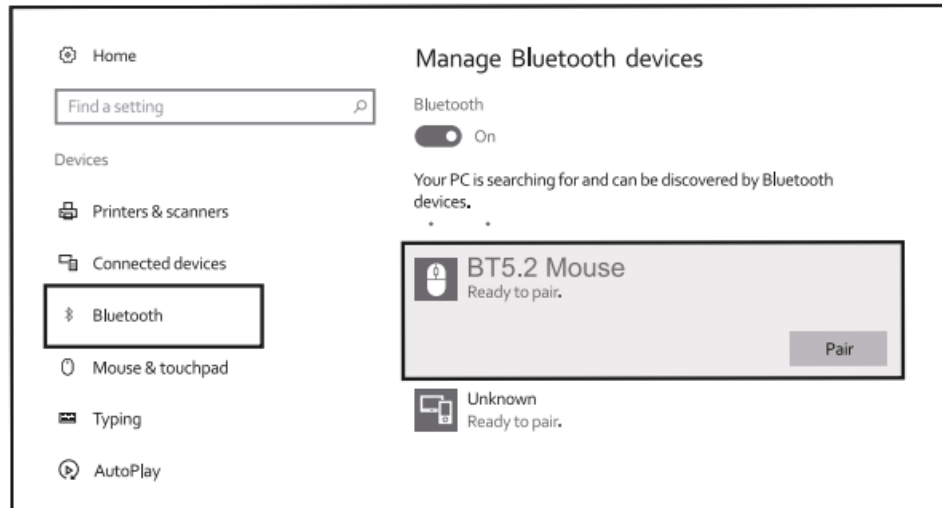
## 2.4G Connection



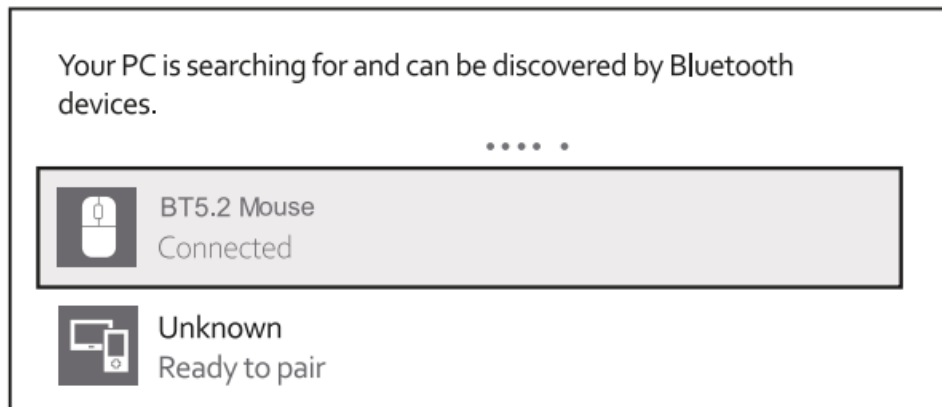


1. Turn on the mouse.
2. Take out the USB receiver.
3. Insert the USB receiver into the computer USB port.
4. Click the mode switch button to 2.4G mode then the first red LED will flash slowly.
  - Defaulted setting at 2.4G mode

6



7

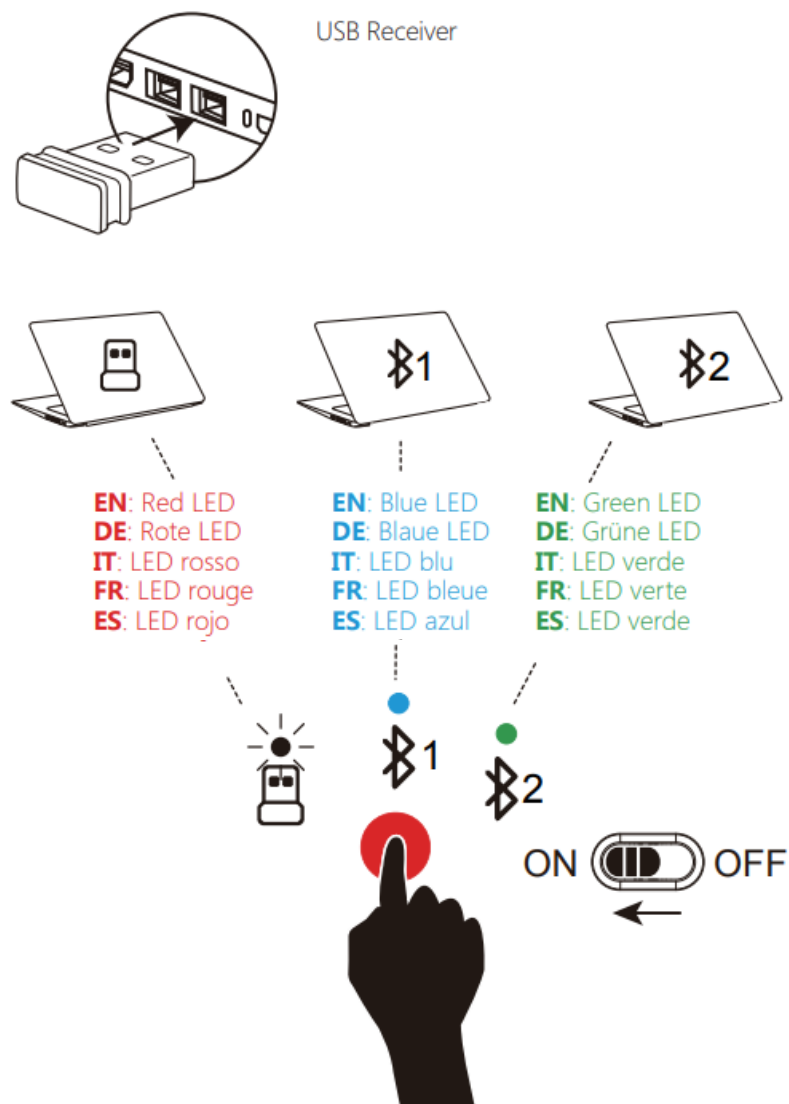


### Windows System(Take Windows 10 as an example)

1. Turn on the mouse.
2. Press the switch button to switch to the second channel, then the blue LED will flash slowly.
3. Long press the switch button for 3~5 seconds until the blue LED flashes quickly. The mouse will be in Bluetooth pairing mode.
4. Click the "Bluetooth devices" button on the computer.
5. Click the "Add or remove Bluetooth devices" button.
6. Search the Bluetooth BT5.2 Mouse, and click the Pairing button.
7. When the Bluetooth "BT5.2 Mouse" is connected, the mouse is ready to use.

### Quickly switch between multiple devices

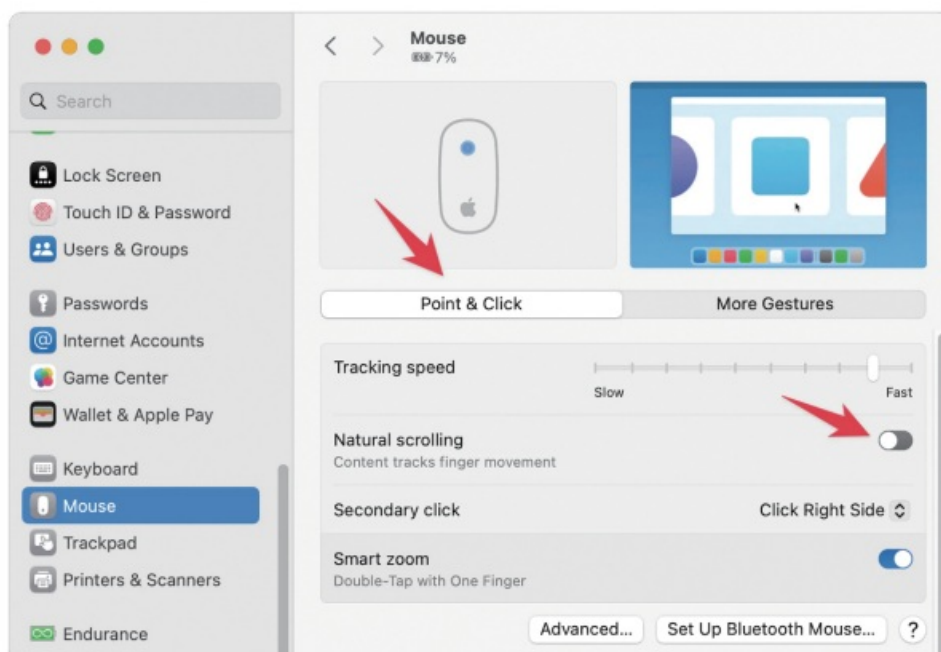
-



\* One click to switch

- When 2.4G or Bluetooth connect successfully, shortly press the switch button at the bottom of the mouse, and you could switch the modes easily.

## About mouse wheel direction on Mac OS





## Mouse Wheel Direction Adjustment on Mac OS

1. Open the computer Settings, go to the Mouse Settings page, Disable the “Natural scrolling” function.
2. Note: On Mac systems, the forward/back buttons are not functional.

EN: Basic Parameters

Chipset	EP2T45F10
Engine	Optics
Mouse Resolution	1000-1600-2400-4000 dpi
Mouse Button Life	Over 3 million
Mouse Size	77.7*124.8*83.2mm
Battery Capacity	500mAh
Charging Time	Two hours
<b>2.4G Transmission Parameters</b>	
Transmission distance	10m
Work voltage	3.7V
Work current	RGB light on: 50 mA, RGB light off: 15 mA
Rate of return	125Hz
<b>Bluetooth Transmission Parameters</b>	
Transmission distance	10m
Work voltage	3.7V
Work current	RGB light on: 50 mA, RGB light off: 15 mA
Rate of return	133Hz
System needs	Bluetooth receiver device(Windows10® or higher versions, Mac OS X 10.10 or higher versions, Android 4.3 or higher versions)
USB interface	Windows® 8, Windows® 10 or higher versions Mac OS X 10.10 or higher versions Android 4.3 or higher versions

## FCC Warning

This device complies with Part 15 of the FCC Rules. Operation is subject to the following two conditions:

1. This device may not cause harmful interference, and
2. This device must accept any interference received, including interference that may cause undesired operation.

**NOTE 1:** This equipment has been tested and found to comply with the limits for a Class B digital device, pursuant

to part 15 of the FCC Rules. These limits are designed to provide reasonable protection against harmful interference in a residential installation. This equipment generates, uses and can radiate radio frequency energy and, if not installed and used in accordance with the instructions, may cause harmful interference to radio communications. However, there is no guarantee that interference will not occur in a particular installation. If this equipment does cause harmful interference to radio or television reception, which can be determined by turning the equipment off and on, the user is encouraged to try to correct the interference by one or more of the following measures:

- Reorient or relocate the receiving antenna.
- Increase the separation between the equipment and receiver.
- Connect the equipment into an outlet on a circuit different from that to which the receiver is connected.
- Consult the dealer or an experienced radio/TV technician for help.

**NOTE 2:** Any changes or modifications to this unit not expressly approved by the party responsible for compliance could void the user's authority to operate the equipment.

The device has been evaluated to meet general RF exposure requirement. The device can be used in portable exposure condition without restriction.

## FAQ:

- **Q: What do the different RGB light modes signify?**

A: The RGB light modes include Mixed Color Running Horse, Colorful Breathing, Colorful Long Light, Colorful Whips, Colorful Snake Eating, Night Light 1, Night Light 2, and Light off.

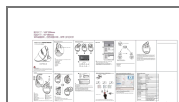
- **Q: How can I quickly switch between multiple devices?**

A: When 2.4G or Bluetooth connection is successful, press the switch button at the bottom of the mouse to easily switch between modes.

- **Q: What are the FCC warnings related to this device?**

A: The device complies with FCC regulations regarding harmful interference and RF exposure requirements. Any unauthorized modifications could void the user's authority to operate the equipment.

## Documents / Resources



[LOYAL D1031C8 Multi Device Vertical Mouse](#) [pdf] User Manual  
D1031C8, D1031C8 Multi Device Vertical Mouse, Multi Device Vertical Mouse, Vertical Mouse, Mouse

## References

- [User Manual](#)

[Manuals+.](#) [Privacy Policy](#)

This website is an independent publication and is neither affiliated with nor endorsed by any of the trademark owners. The "Bluetooth®" word mark and logos are registered trademarks owned by Bluetooth SIG, Inc. The "Wi-Fi®" word mark and logos are registered trademarks owned by the Wi-Fi Alliance. Any use of these marks on this website does not imply any affiliation with or endorsement.