

LOXIM®
HS02004950
AROMATHERAPY
DIFFUSER



Loxim HS02004950 Aromatherapy Diffuser User Manual

[Home](#) » [Loxim](#) » Loxim HS02004950 Aromatherapy Diffuser User Manual 

Contents

- [1 Loxim HS02004950 Aromatherapy Diffuser](#)
- [2 FEATURES](#)
- [3 Illustration](#)
- [4 Operating instruction](#)
- [5 Care/Maintenance](#)
- [6 Trouble Shooting](#)
- [7 Specifications](#)
- [8 TROUBLESHOOTING](#)
- [9 FREQUENTLY ASKED QUESTIONS](#)
- [10 VIDEO – PRODUCT OVERVIEW](#)
- [11 References](#)
- [12 Related Posts](#)

LOXIM®

Loxim HS02004950 Aromatherapy Diffuser

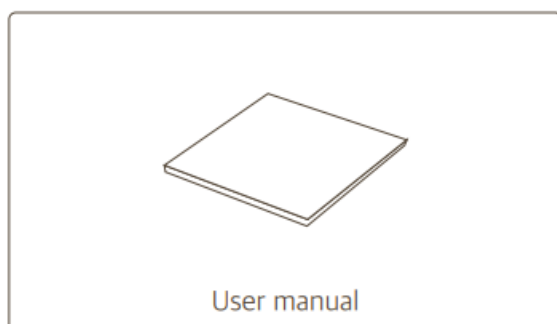
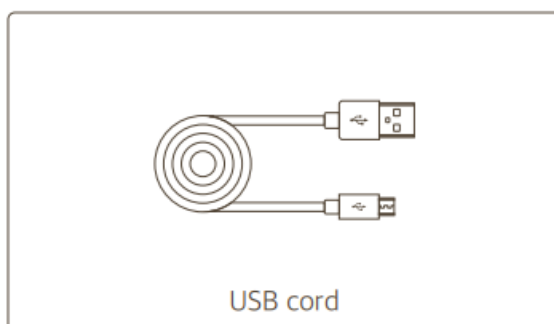
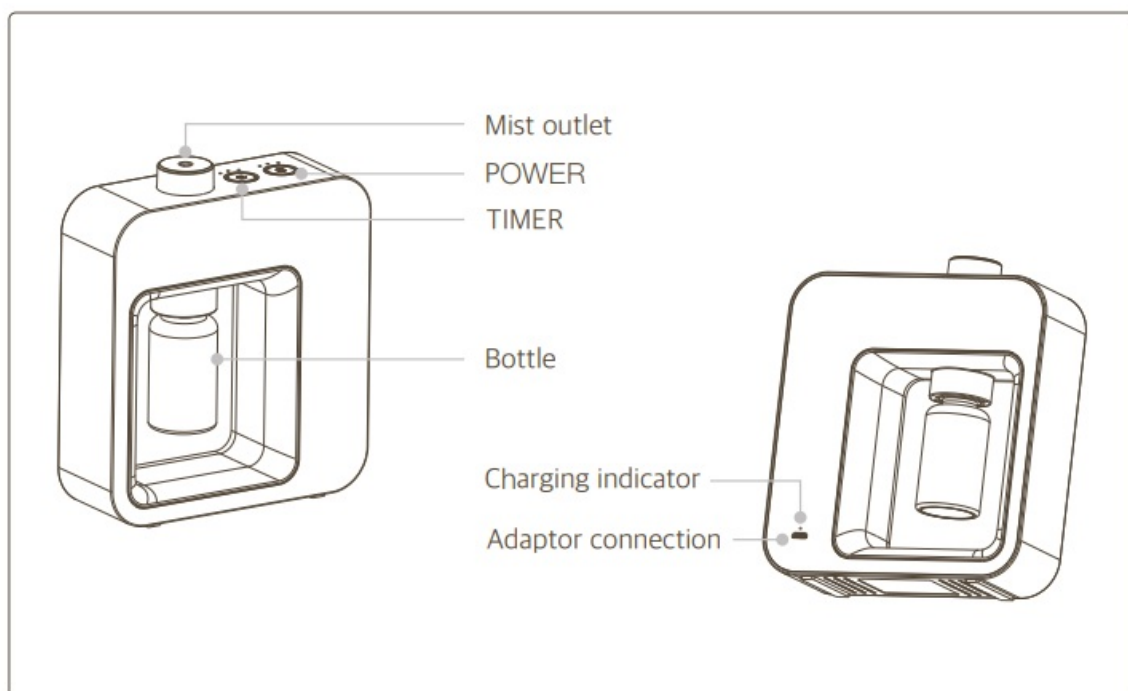


FEATURES

- **Ultrasonic Technology:** This method uses ultrasonic waves to spread essential oils into a fine mist. This method works well without using heat, so the therapeutic qualities of the oils are kept.
- **Large Water Tank:** It comes with a large water tank that lets it work for longer without having to be refilled often. Usually between 300 and 500 ml.
- **Mist Settings That Can Be Changed:** This diffuser has different mist output levels (low, medium, high) that let you change how strong the scent is and how long it lasts.
- **LED Light Options:** It has built-in LED lights that come in different colors and can often be turned off or changed for strength.
- **Auto Shut-Off Function:** It has an automatic shut-off feature that turns it off when the water level drops too low. This keeps it from getting too hot and breaking.
- **Quiet Operation:** It is made to work quietly, so you can use it in beds, businesses, or other places where noise might be an issue.
- **Timer Settings:** It has customizable timer settings that let people set the diffuser to run for certain amounts of time, like 1, 3, or 6 hours.
- **Small and Stylish:** It has a sleek and modern look that goes with a lot of different home or office decors and is small enough to fit anywhere.
- **Easy-to-Use Controls:** It comes with buttons or a touch screen that are easy for anyone to use to control the mist, set the light, and change the timer.

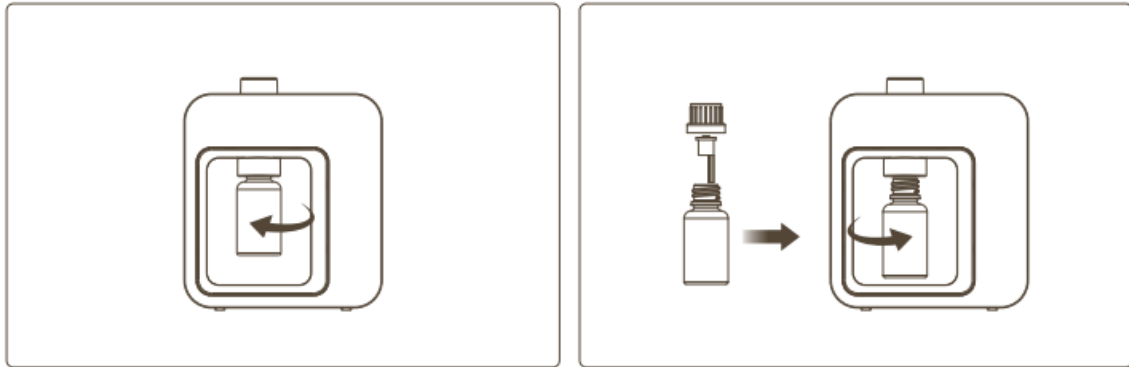
- **360-Degree Mist Output:** Has a 360-degree mist output to make sure the flavor fills the room evenly.
- **Low Noise Level:** It works at a low noise level, usually less than 35 dB, so it doesn't bother other people when it's being used.
- Made from high-quality plastic or wood that doesn't contain BPA, so it's safe and will last a long time.
- **Multiple Modes:** It may have more than one working mode, like constant misting or intermittent misting, so the user can choose the mode that works best for them.
- **Remote Control Compatibility:** Some types may come with a remote control that lets you easily use the machine from afar.
- **Lights That Change Colors:** It has many LED lights that can change colors to make a relaxing atmosphere and mood lighting.
- **Essential Oil Compatibility:** It can be used with different essential oils and mixes, so you can customize the way it smells.
- **Easy to Clean:** The diffuser is made with parts that can be taken off and cleaned easily, so it stays clean and works well.
- **Energy-Efficient:** It uses very little electricity, so it is energy-efficient and cheap to use for a long time.
- **Portable:** The design is light and portable, so it's easy to move to different rooms or areas as needed.
- **Features for Safety:** Includes safety features like non-slip feet or pads to keep it from falling over.

Illustration



Operating instruction

- Remove the empty oil bottle by twisting it to the left.
- Take off the cap and reducer of 10 mL or 15 mL bottle of 100% pure essential oil, then twist it up to the diffuser.



Battery charge

- **In-charging:** The indicator is yellow.
- **Charging completion:** The indicator is green.
- **Low battery reminder:** The middle indicator turns red and slow-flashing
- **Low battery alarm:** The middle indicator turns red and quick-flashing



Power on

- Press POWER for 3 seconds, 3 mode indicators will flash till the diffuser detects essential oil then operate under pre-set mode (default mode at “LOW” for 1 hour).

Power off

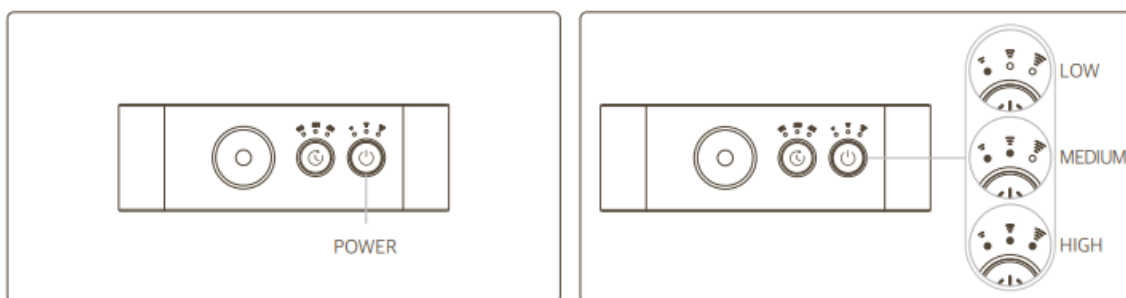
- Press POWER for 3 seconds, the mode indicator will be flashing for 20 seconds, then power off.
- When the timer is up, the mode indicator will flash for 20 seconds, then power off.

Mode selection

Press POWER to select (intermittent and cycling)

- **LOW:** 10 seconds diffusing and pause for 270 seconds, 1 mode indicator on.

- **MEDIUM:** 10 seconds diffusing and pause for 30 seconds, 2 mode indicators on.
- **HIGH:** 10 seconds diffusing and pause for 10 seconds, 3 mode indicators on.



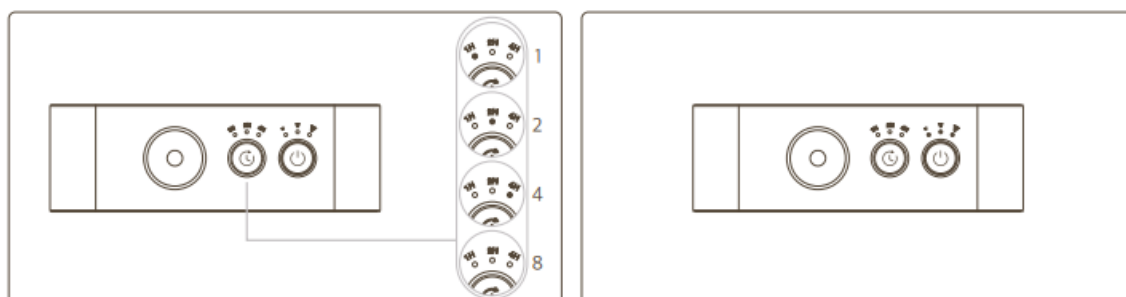
Timer selection

Press TIMER to select

- 1-hour work time, “1” indicator on.
- 2-hour work time, “2” indicator on.
- 4-hour work time, “4” indicator on.
- 8-hour work time, 3 indicators off.

Refill reminder

- When essential oil runs out, the mode indicator will flash as a reminder until a refill is detected.



Care/Maintenance

- Charge the diffuser for 4 hours before first use.
- Only use the power cord supplied with the diffuser.
- Disconnect from the power source when not in use.
- Disassembly may cause malfunction of the diffuser.
- The diffuser is not designed for outdoor use.
- Wipe the diffuser with a soft cloth.
- Please keep away from children.
- In case clearance of oil residual is needed, fill the alcohol in an empty bottle and diffuse for a while in a well-ventilated area.
- Please do not pull the suction tube. Gently rinse the tube with water and wipe it with a soft cloth if needed.
- Only use 100% pure essential oil, other types, such as fragrances and synthetic oils, may put the diffuser under

unexpected conditions and void its warranty.

- Please do not invert or tilt the diffuser.

Trouble Shooting

- Make sure the oil bottle is not empty.
- A full charge of the battery, i.e., the indicator turns green.
- Restart the diffuser.
- Try different pure essential oils.

Specifications

Charger	Rechargeable battery
Charging Time	Approximate 4 hours
Battery Duration	8 hours at Medium
Consumption	About 1 mL/h for High, 0.5 mL/h for Medium, 0.07 mL/h for Low
Noise Level	38 dB
Coverage	700 Square ft.
Voltage	DC 5V 1A
Oil Bottle	Applicable 10mL, 15mL
Product Size	L130 W42H152mm
Gift Box	L191 W191H52mm
Net Weight	0.28 KG (Product)

TROUBLESHOOTING

Why more oil is used by nebulizing diffusers than by other types of diffusers?

- The nebulizing diffuser directly diffuses a cool mist of pure essential oils. There is no heat-damaged oil chemistry or water-diluted oil fidelity. More oil is needed for better aroma therapeutic benefits. And it is proven that mist dispersed by nebulizing diffusers is longer lasting in the atmosphere.

Does the diffuser work in continuous mode or intermittent mode?

- The diffuser works in intermittent mode. Details as below:
 - **LOW:** 10 seconds diffusing and pause for 270 seconds.
 - **MEDIUM:** 10 seconds diffusing and pause for 30 seconds.
 - **HIGH:** 10 seconds diffusing and pause for 10 seconds.

How to set the mode of the diffuser? Any advice for timer setting?

- We suggest the default setting (“Low” for “1” hour) first. You can try the other modes and timer selections according to your preference and the size of rooms etc.

Is the most visible or not?

- Normally no. Essential oil is broken down into tiny particles that are difficult to see. You will clearly see it under a focus lighting.

is there oil leakage?

- There should be no leakage under appropriate operating. Please do not invert or tilt the diffuser, and always use pure essential oils.

FREQUENTLY ASKED QUESTIONS

What is the Loxim HS02004950 Aromatherapy Diffuser?

The Loxim HS02004950 Aromatherapy Diffuser is a device designed to disperse essential oils into the air, providing a fragrant and soothing atmosphere.

What scent does the Loxim HS02004950 Aromatherapy Diffuser use?

The Loxim HS02004950 Aromatherapy Diffuser uses a coconut scent, enhancing the ambiance with a pleasant aroma.

What material is the Loxim HS02004950 Aromatherapy Diffuser made from?

The Loxim HS02004950 is made from Acrylonitrile Butadiene Styrene (ABS), a durable and lightweight plastic.

What is the power source for the Loxim HS02004950 Aromatherapy Diffuser?

The Loxim HS02004950 is powered by batteries, specifically requiring 1 Lithium Ion battery.

What is the capacity of the Loxim HS02004950 Aromatherapy Diffuser?

The diffuser has a capacity of 15 milliliters, allowing it to hold and disperse a moderate amount of essential oil.

What floor area can the Loxim HS02004950 Aromatherapy Diffuser cover?

The Loxim HS02004950 can cover an area of up to 700 square feet, making it suitable for medium to large rooms.

What are the product dimensions of the Loxim HS02004950?

The product dimensions are 5.98 inches in length, 5.12 inches in width, and 1.65 inches in height.

What is the runtime of the Loxim HS02004950 Aromatherapy Diffuser?

The diffuser has a runtime of up to 8 hours, providing extended use before needing a refill or battery change.

Who is the manufacturer of the Loxim HS02004950?

The Loxim HS02004950 Aromatherapy Diffuser is manufactured by Minidiva.

What is the unit count of the Loxim HS02004950 Aromatherapy Diffuser?

The unit count is 1.0 count, meaning each purchase includes a single diffuser.

How much does the Loxim HS02004950 Aromatherapy Diffuser weigh?

The diffuser weighs 1.25 pounds, making it relatively light and easy to move or place as needed.

What is the price of the Loxim HS02004950 Aromatherapy Diffuser?

The price of the Loxim HS02004950 Aromatherapy Diffuser is \$69.99.

Why isn't my Loxim HS02004950 Aromatherapy Diffuser turning on?

Ensure the diffuser is properly plugged into a working power outlet. Check the power cord for any damage. If using a battery-operated model, ensure the batteries are fully charged and correctly installed.

What should I do if my Loxim HS02004950 Aromatherapy Diffuser is not producing mist?

Verify that there is enough water in the tank and that the water level is within the recommended range. Ensure the ultrasonic plate is clean and not clogged. Clean the plate with a soft cloth and try again.

Why is my Loxim HS02004950 Aromatherapy Diffuser leaking water?

Ensure the diffuser is placed on a flat, stable surface. Check if the water tank cap is securely tightened. Avoid overfilling the tank and ensure the water level does not exceed the maximum fill line.

What can I do if the mist output of my Loxim HS02004950 Aromatherapy Diffuser is weak?

Clean the ultrasonic plate and the water tank. Ensure the diffuser is in a well-ventilated area. Check the water level and add more water if necessary. Make sure to use clean water and avoid using hard water.

VIDEO – PRODUCT OVERVIEW



[Download the PDF file: Loxim HS02004950 Aromatherapy Diffuser User Manual](#)
[Aromatherapy-Diffuser-User-Manual.mp4](#)

References

- [User Manual](#)