



Contents [[hide](#)]

- [1 Lowes Drawer kit](#)
- [2 How to remove the drawer](#)
- [3 FAQs](#)
- [4 Documents / Resources](#)
 - [4.1 References](#)

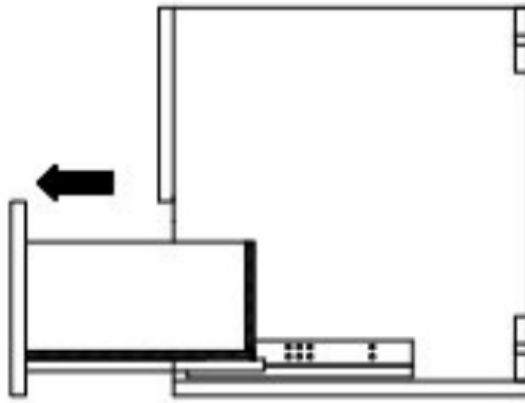


Lowes Drawer kit

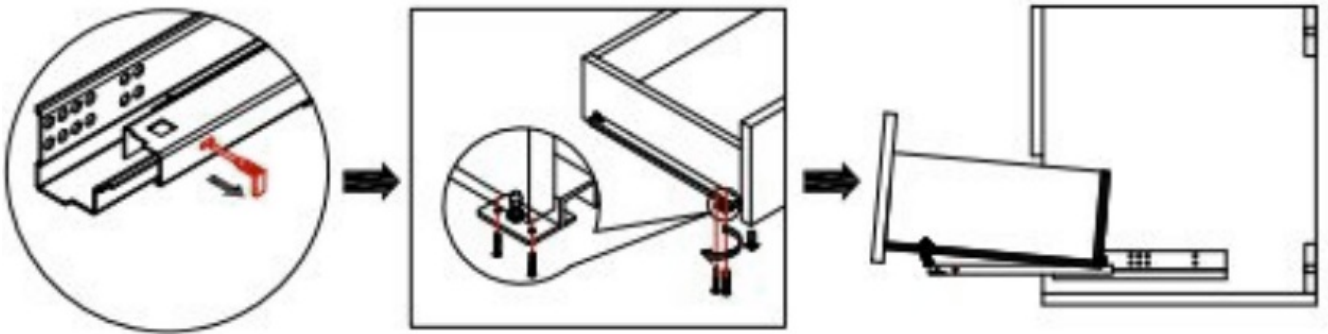


How to remove the drawer

1. Full pull out the drawer.



2. Pull out the plastic latch at the bottom of the guide rail and loosen the power screw at the bottom of the guide rail.



3. Finally pull out the drawer.



Top Picks

- **RELIABILT White Plastic Drawer Guide Kit**

Includes two template guides and four corner guides, allowing adjustability for custom drawer installations.

- **Prime-Line Brown Plastic Drawer Guide Kit**

Features two brown plastic track case guides, four white corner glides, ring shank nails, and screws. Designed for tracks measuring 1/4" x 7/8".

- **Prime-Line White Plastic Drawer Guide Kit**

Comes with two white plastic track case guides and four white corner glides, suitable for tracks measuring 3/32" x 1-1/4".

Tools & Materials You'll Need

- Screwdriver or drill with screwdriver bits
- Tape measure
- Level
- Pencil or marker
- Screws (often included in the kit)
- Optional: Wood glue for added stability

Step 1: Measure Your Drawer and Cabinet

1. **Drawer Dimensions:** Measure the width, depth, and height of your drawer to ensure the guides will fit properly.
2. **Cabinet Opening:** Measure the interior width and depth of the cabinet where the drawer will slide in.

Step 2: Prepare the Drawer

1. **Remove Existing Hardware:** If you're replacing old guides, remove them carefully.
2. **Clean the Surface:** Ensure the back of the drawer is clean and smooth for optimal guide attachment.

Step 3: Install the Drawer Guides

1. **Position the Guides:** Place the guide assemblies on the back corners of the drawer.
2. **Align the Guides:** Use a level to ensure the guides are straight and properly aligned.
3. **Attach the Guides:** Secure the guides to the drawer using the screws provided in the kit.

Step 4: Install the Corner Guides

- **Place the Corner Guides:** Position the corner guides inside the cabinet at the back

corners.

- **Secure the Guides:** Attach the corner guides to the cabinet using the screws provided.

Step 5: Test the Drawer

- **Insert the Drawer:** Place the drawer into the cabinet, ensuring the guides align with the corner guides.
- **Check Movement:** Open and close the drawer several times to ensure smooth operation.
- **Adjust if Necessary:** If the drawer sticks or doesn't slide smoothly, adjust the guides or corner guides as needed.

FAQs

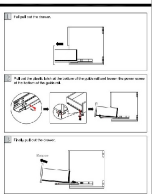
What is included in a typical Lowes drawer kit?

Most kits include drawer slides or guides, screws, corner guides, and sometimes installation templates depending on the model.

Can I install the drawer kit myself?

Yes, these kits are designed for DIY installation. You'll need basic tools like a screwdriver, drill, tape measure, level, and pencil.

Documents / Resources

	<p>Lowes Drawer System [pdf] Installation Guide</p> <p>Drawer System, Drawer, System</p>
-------------------------------------------------------------------------------------	----------------------------------------------------------------------------------------------------------

References

- [User Manual](#)

lowes  Drawer Kit, installation Guide, lowes

Leave a comment

Your email address will not be published. Required fields are marked *

Comment *

Name

Email

Website

☐ Save my name, email, and website in this browser for the next time I comment.

Post Comment

Search:

e.g. whirlpool wrf535swhz

Search

[Manuals+](#) | [Upload](#) | [Deep Search](#) | [Privacy Policy](#) | [@manuals.plus](#) | [YouTube](#)

This website is an independent publication and is neither affiliated with nor endorsed by any of the trademark owners. The "Bluetooth®" word mark and logos are registered trademarks owned by Bluetooth SIG, Inc. The "Wi-Fi®" word mark and logos are registered trademarks owned by the Wi-Fi Alliance. Any use of these marks on this website does not imply any affiliation with or endorsement.