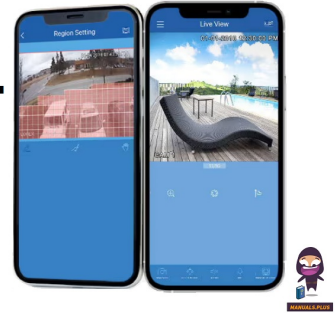


LOREX® App For Wi-Fi Smart Light Bulb Camera



Lorex App For Wi-Fi Smart Light Bulb Camera User Guide

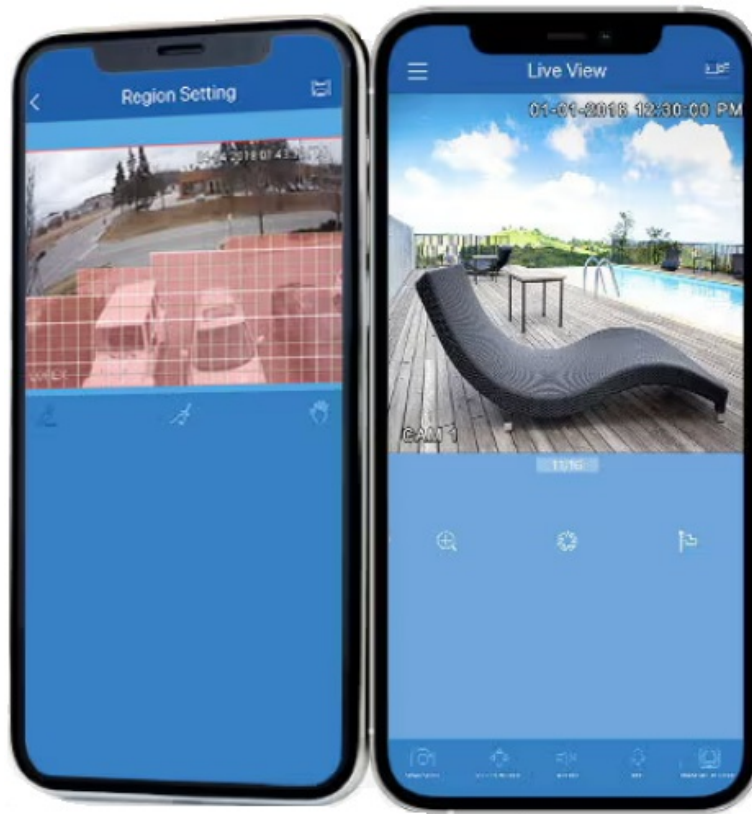
[Home](#) » [Lorex](#) » Lorex App For Wi-Fi Smart Light Bulb Camera User Guide 

Contents

- [1 Lorex App For Wi-Fi Smart Light Bulb Camera](#)
- [2 Product Information](#)
- [3 Product Usage Instructions](#)
- [4 Connecting to the Lorex App](#)
- [5 Regulatory Information](#)
- [6 FCC Statement](#)
- [7 Documents / Resources](#)
 - [7.1 References](#)



Lorex App For Wi-Fi Smart Light Bulb Camera



Product Information

Specifications:

- **Compliance:** Industry Canada license-exempt RSS standard(s), Part 15 of FCC Rules, UKCA relevant directives and standards
- **Operating Distance:** Minimum 20cm between the radiator and the user's body
- **Manufacturer:** Lorex Technology UK Limited
- **Address:** 1 Georges Square, Bath Street, Bristol, United Kingdom, BS1 6BA

Product Usage Instructions

Regulatory Information:

This device complies with regulatory standards set by Industry Canada, FCC, and UKCA.

IC Statement:

1. Ensure the device does not cause interference.
2. The device must accept any interference, including that which may impact its operation.

Declaration of Conformity UKCA:

This device complies with UKCA directives and standards. Download the Declaration of Conformity from the provided link.

FAQs

- **Q: Where can I find FCC compliance declarations?**

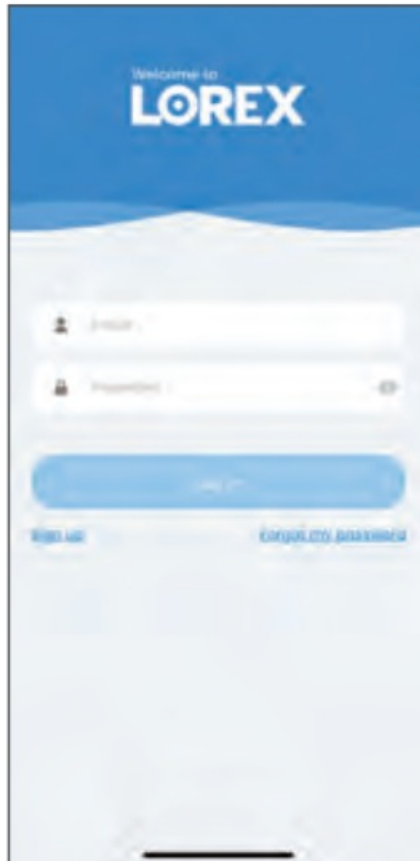
A: You can find full FCC compliance declarations at <https://www.lorextechnology.com/FCC-compliance>.

Connecting to the Lorex App

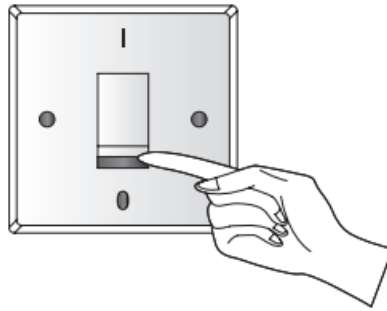
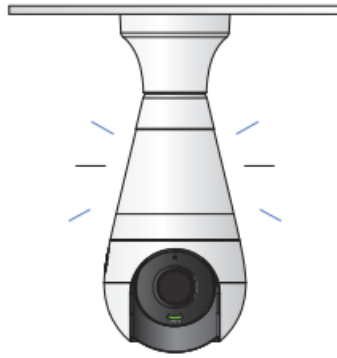
1. Download the Lorex App by scanning the QR code or searching in your app store.
If you already have the app, ensure it's up to date.



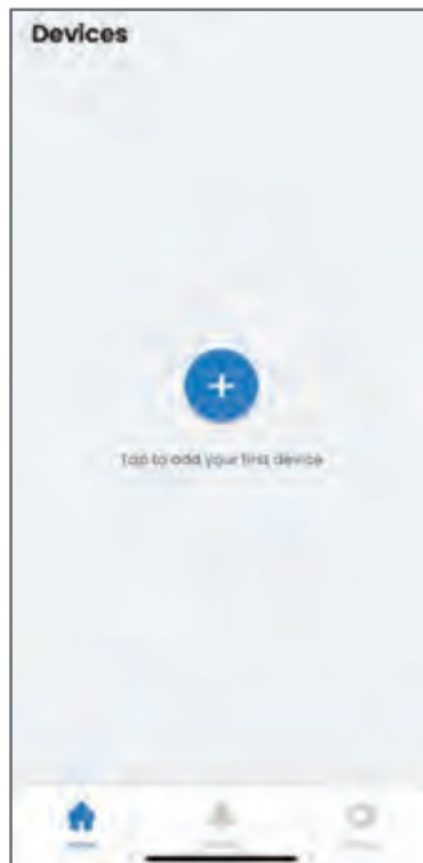
2. Sign up a new Lorex account or log in to your existing one.



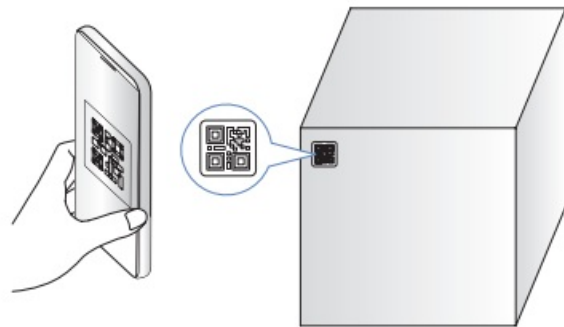
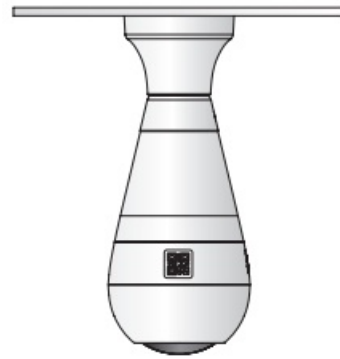
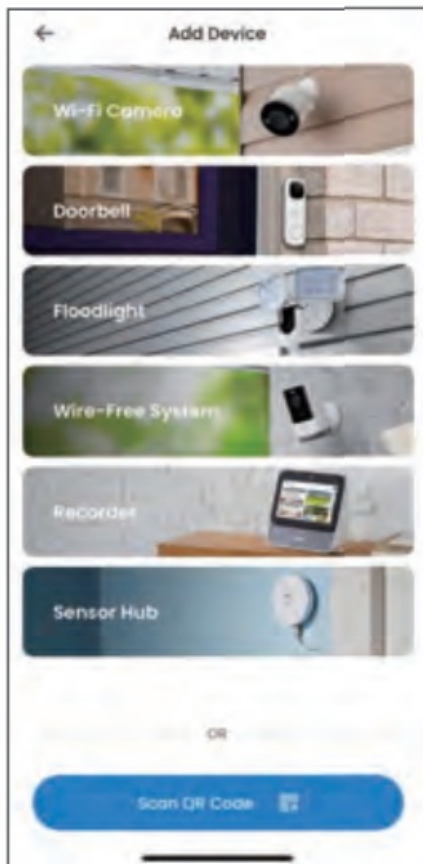
3. Turn on the light to power your lightbulb camera.
Stay close to the lightbulb camera until setup is complete.



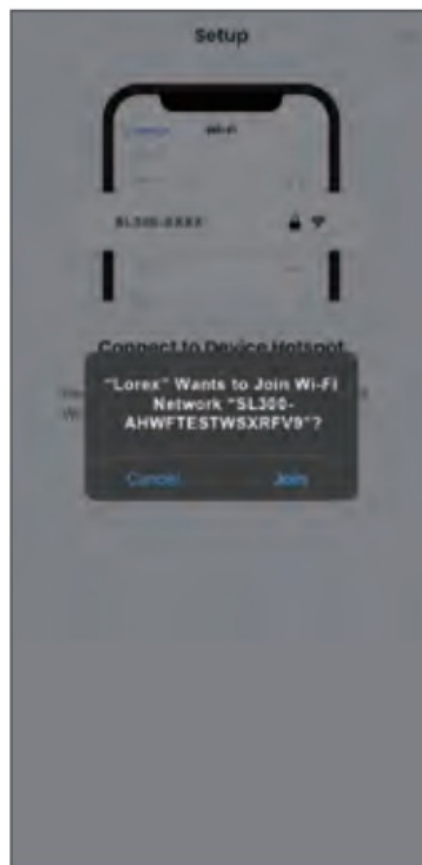
4. In the app, tap the [+] icon to add a new device.



5. Tap "Scan QR Code" and scan the code on the packaging or the lightbulb camera.



6. Join the lightbulb camera's network hotspot.



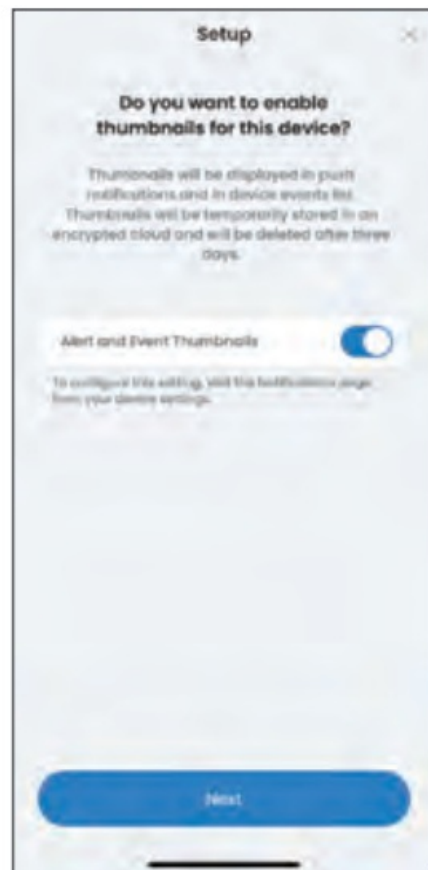
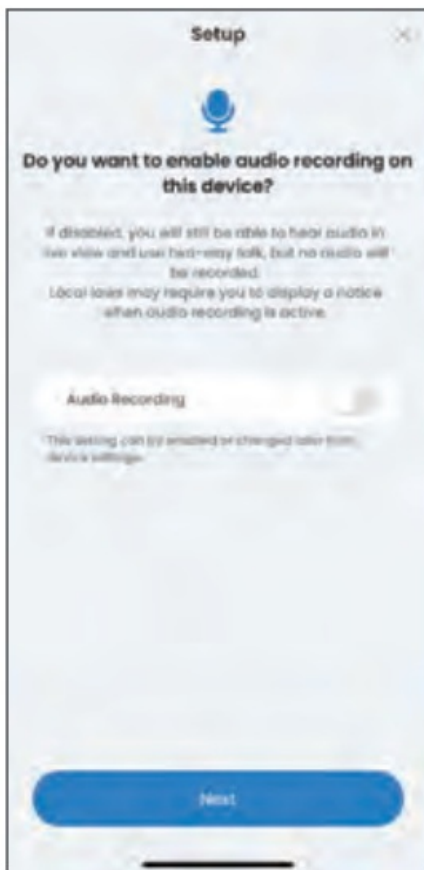
7. Set a device password.



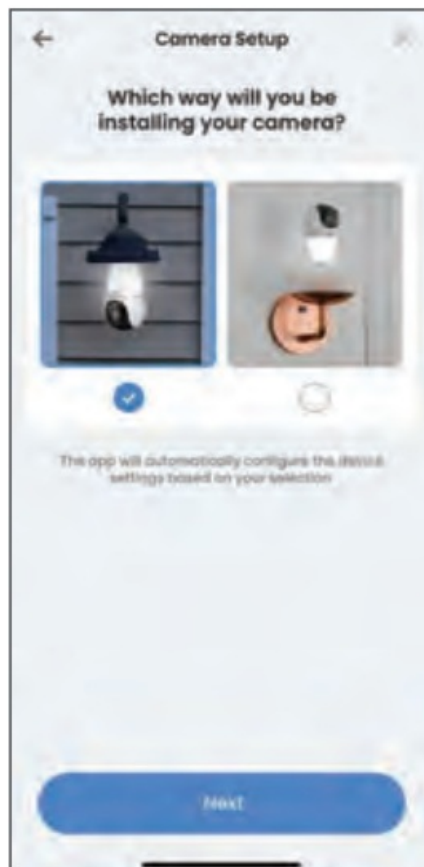
8. Select your Wi-Fi network, enter the password, and connect the lightbulb camera.



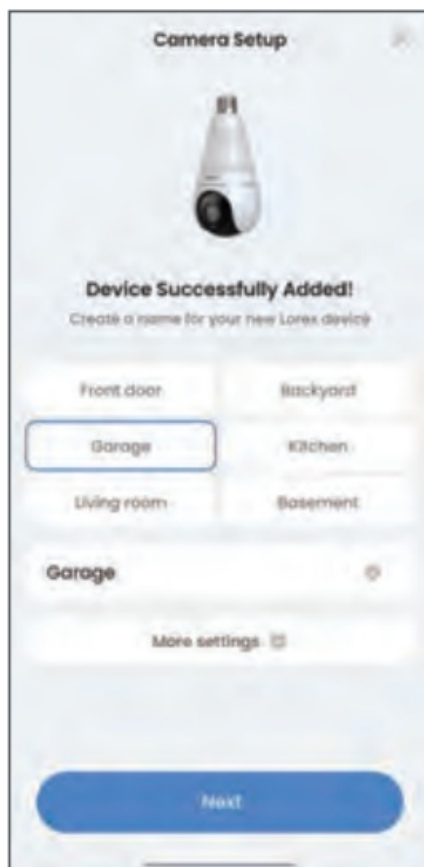
9. Enable or disable audio recording and thumbnails.



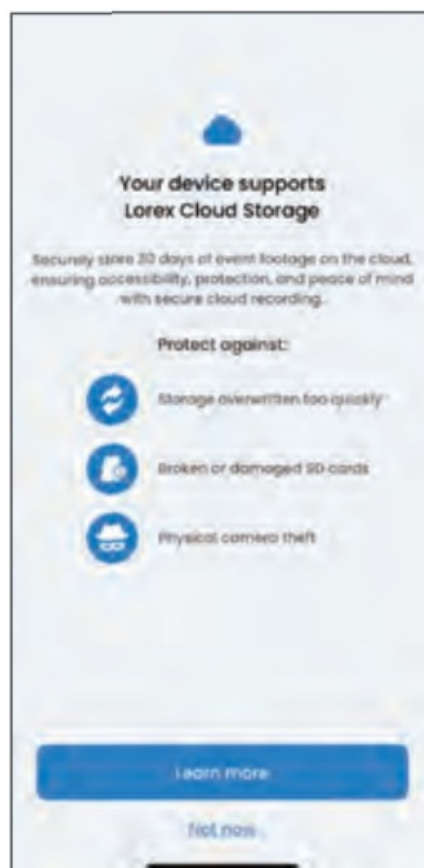
10. Select the lightbulb camera's installation orientation to adjust its view.



11. Name your device.



12. Optional: Set up Lorex Cloud Subscription. For cloud storage options, visit www.lorex.com/cloud.



Note: App screens and steps may change with updates.

Need Help?

For detailed instructions and additional support material, scan the QR code or visit: www.help.lorex.com/SL300-series



Regulatory Information

IC Statement

This device complies with Industry Canada license-exempt RSS standard(s). Operation is subject to the following two conditions:

1. This device may not cause interference, and
2. This device must accept any interference, including interference that may cause undesired operation of the device.

This equipment should be installed and operated with a minimum distance 20cm between the radiator and your body.

FCC Statement

Please take attention that changes or modifications not expressly approved by the party responsible for compliance could void the user's authority to operate the equipment.

This device complies with Part 15 of the FCC Rules. Operation is subject to the following two conditions:

1. This device may not cause harmful interference, and
2. This device must accept any interference received, including interference that may cause undesired operation.

Caution: The user that changes or modifications not expressly approved by the party responsible for compliance could void the user's authority to operate the equipment.

This equipment has been tested and found to comply with the limits for a Class B digital device, pursuant to Part 15 of the FCC Rules. These limits are designed to provide reasonable protection against harmful interference in a residential installation. This equipment generates, uses and can radiate radio frequency energy and, if not installed and used in accordance with the instructions, may cause harmful interference to radio communications. However, there is no guarantee that interference will not occur in a particular installation. If this equipment does cause harmful interference to radio or television reception, which can be determined by turning the equipment off and on, the user is encouraged to try to correct the interference by one or more of the following measures:

- Reorient or relocate the receiving antenna.
- Increase the separation between the equipment and receiver.
- Connect the equipment into an outlet on a circuit different from that to which the receiver is connected.
- Consult the dealer or an experienced radio/TV technician for help.

RF exposure warning

This equipment must be installed and operated in accordance with provided instructions and antenna(s) used for this transmitter must be installed to provide a separation distance of at least 20cm from all persons and must not be co-located or operating in conjunction with any other antenna or transmitter. End-users and installers must be provided with antenna installation instructions and transmitter operating conditions for satisfying RF exposure compliance.


The equipment should be installed and operated with a minimum distance 20cm between the radiator and your

body.
For full FCC compliance declarations, visit <https://www.lorextechnology.com/FCC-compliance>

Declaration of Conformity UKCA

This device complies with UKCA relevant directives and standards. UK Declaration of Conformity (DoC) can be downloaded from: <https://www.lorextechnology.com/UKCA-compliance>
Lorex Technology UK Limited
1 Georges Square, Bath Street, Bristol, United Kingdom, BS1 6BA.

Documents / Resources

	<p>LOREX Lorex App For Wi-Fi Smart Light Bulb Camera [pdf] User Guide Lorex App For Wi-Fi Smart Light Bulb Camera, App For Wi-Fi Smart Light Bulb Camera, Wi-Fi Smart Light Bulb Camera, Smart Light Bulb Camera, Light Bulb Camera, Camera</p>
---	---

References

- [User Manual](#)

Manuals+ Privacy Policy

This website is an independent publication and is neither affiliated with nor endorsed by any of the trademark owners. The "Bluetooth®" word mark and logos are registered trademarks owned by Bluetooth SIG, Inc. The "Wi-Fi®" word mark and logos are registered trademarks owned by the Wi-Fi Alliance. Any use of these marks on this website does not imply any affiliation with or endorsement.