



LOREX F462AQ Series 2K WiFi Camera User Manual

[Home](#) » [Lorex](#) » LOREX F462AQ Series 2K WiFi Camera User Manual 

Contents

- [1 LOREX F462AQ Series 2K WiFi Camera](#)
- [2 Overview](#)
- [3 Setup](#)
- [4 FCC](#)
- [5 Documents / Resources](#)
 - [5.1 References](#)
- [6 Related Posts](#)



LOREX F462AQ Series 2K WiFi Camera



Package Contents

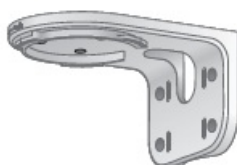
- 2K Wi-Fi Camera (x1)



- Mounting Template (x1)



- Mounting Bracket (x1)



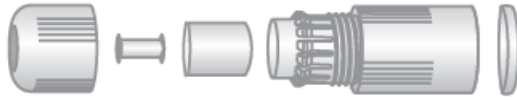
- Anchors (x4)



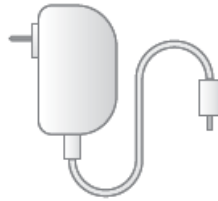
- Screws (x4)



- Ethernet Cap Cover (x1)



- Power Adapter (x1)



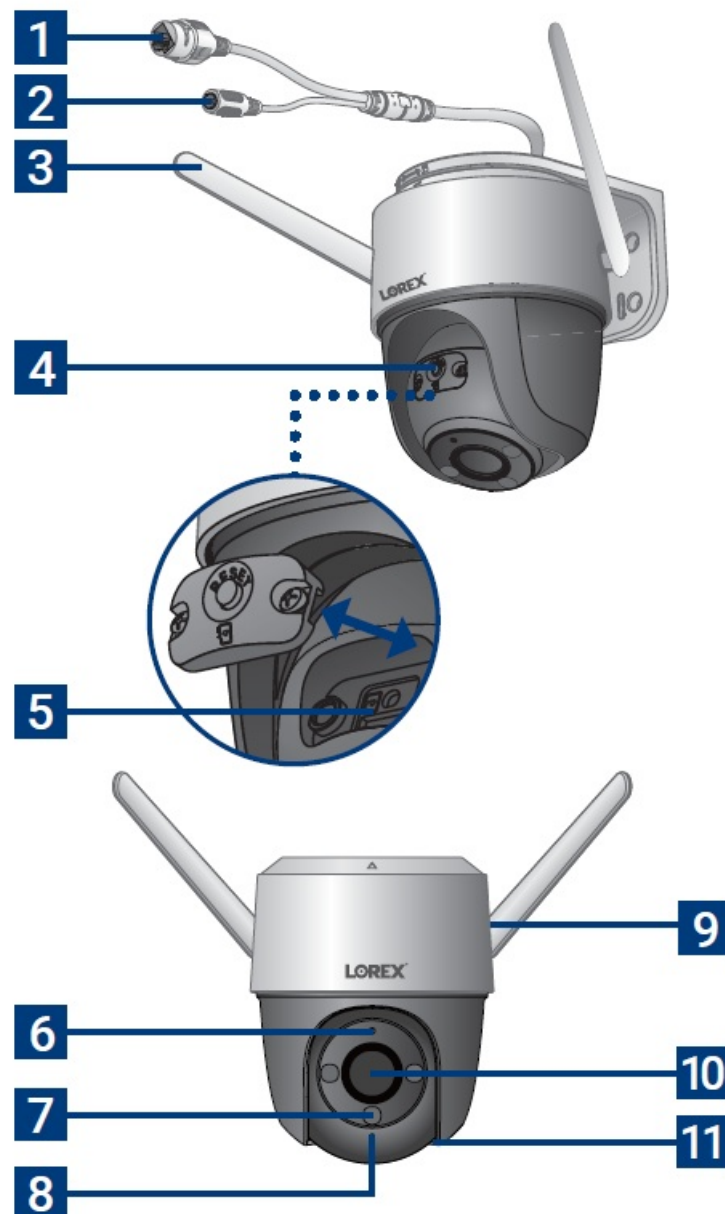
- 32GB MicroSD card (x1)



- Drill








Overview



1. Ethernet Port
2. Power Port
3. Wi-Fi Antennas
4. Pairing/Reset Button
5. MicroSD card slot
6. Status Indicator
7. Warning Light
8. Infrared Light
9. Rear Speaker
10. Lens
11. Microphone

Status Indicator

Flashing		Ready for network connection.
Solid		Operating correctly.
Flashing		Network connection failed.*
Solid		Device malfunction.*
Flashing		A firmware update is in progress.

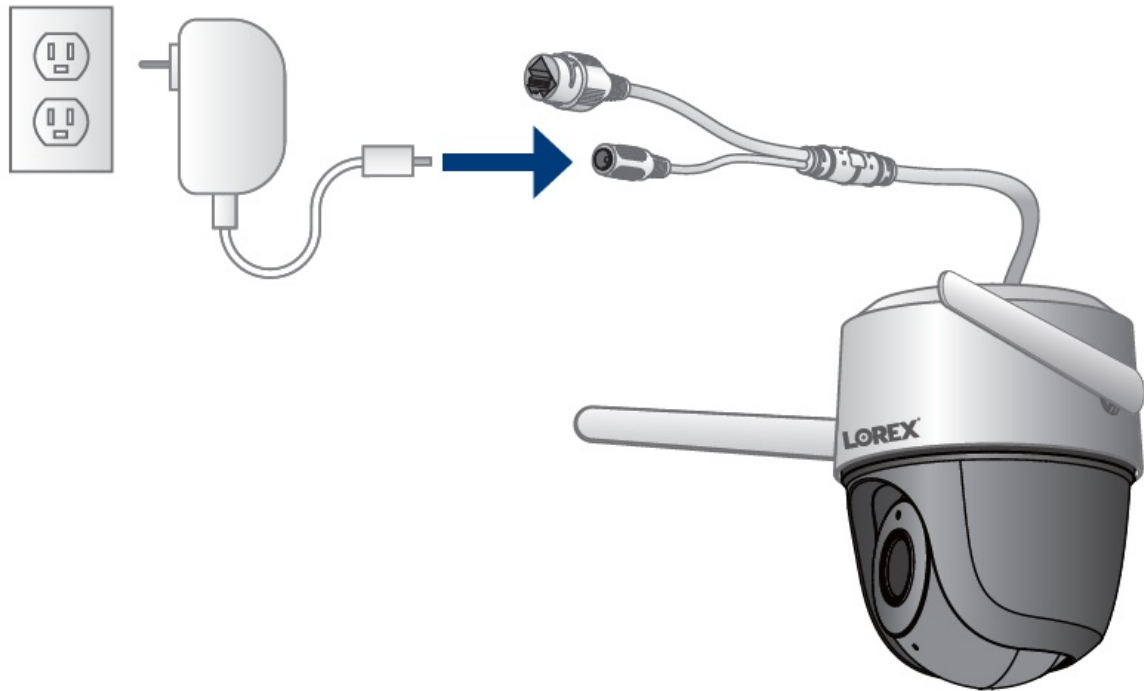
Try resetting the device by holding down the reset button

Setup

1. Download Lorex Home app



2. Tap + in the app to add the device
3. Plug in the power adapter and connect it to the device.



4. Follow the in-app instructions to complete setup

Need help?

For up-to-date information and resources visit



help.lorex.com

- Download product guides
- Find related troubleshooting tips & FAQs
- Watch how-to-videos

FCC

Register your product

Please see our full Terms of Service and Limited Hardware Warranty Policy at

As our products are subject to continuous improvement, Lorex reserves the right to modify product design, specifications and prices, without notice and without incurring any obligation. E&OE. All rights reserved.

This device complies with part 15 of the FCC Rules. Operation is subject to the following two conditions: (1) This device may not cause harmful interference, and (2) This device must accept any interference received, including interference that may cause undesired operation


Please take attention that changes or modification not expressly approved by the party responsible for compliance could void the user's authority to operate the equipment.

This device complies with Part 15 of the FCC Rules. Operation is subject to the following two conditions:

- This device may not cause harmful interference, and
- This device must accept any interference received, including interference that may cause undesired operation.

This equipment complies with FCC/IC RSS-102 radiation exposure limits set forth for an uncontrolled environment. This equipment should be installed and operated with minimum distance 20cm between the radiator & your body.

Documents / Resources

	LOREX F462AQ Series 2K WiFi Camera [pdf] User Manual F462AQ-Z, F462AQZ, UCZ-F462AQ-Z, UCZF462AQZ, F462AQ Series 2K WiFi Camera, F462AQ Series, 2K WiFi Camera, WiFi Camera, Camera
--	---

References

- [🌐 Lorex Technical Support | LOREX Support](#)
- [📄 Lorex Limited Warranty - Exceptions, Obligations | Lorex](#)