



## Lorelli SPRINTER Scooter Instruction Manual

[Home](#) » [lorelli](#) » Lorelli SPRINTER Scooter Instruction Manual 



## Contents

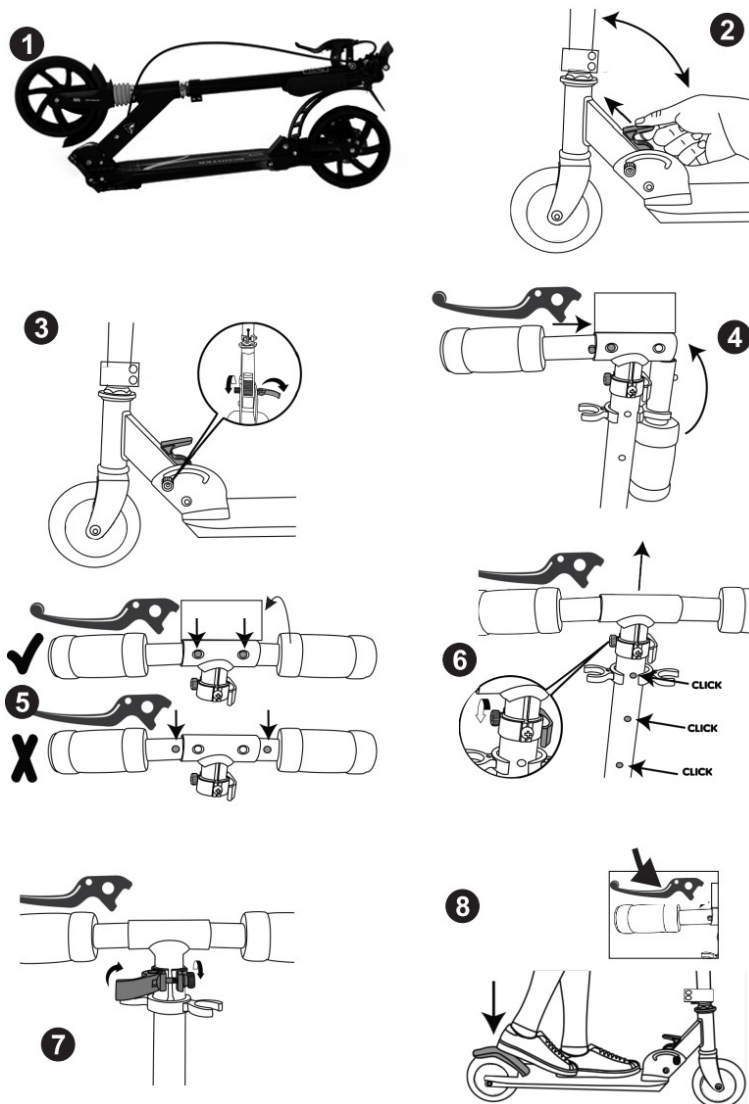
- 1 **SPRINTER Scooter**
- 2 **IMPORTANT- READ CAREFULLY AND KEEP IT FOR FUTURE REFERENCE!**
- 3 **IMPORTANT NOTE AND bits of ADVICES**
- 4 **SERVICING AND MAINTENANCE**
- 5 **SAFETY RIDING**
- 6 **FOR THE ADOLESCENT SAFETY**
- 7 **BRAKING**
- 8 **ASSEMBLY**
- 9 **Documents / Resources**
- 10 **Related Posts**

## SPRINTER Scooter



[https://lorelli.eu/media/documents/products/Scooters/Scooter%20SPRINTER\\_Manual%20Instruction.pdf](https://lorelli.eu/media/documents/products/Scooters/Scooter%20SPRINTER_Manual%20Instruction.pdf)

Scan the QR code to get more product information and manual instruction in more languages. Download QR Scanner App onto your device.



## IMPORTANT- READ CAREFULLY AND KEEP IT FOR FUTURE REFERENCE!

### WARNING

**WARNING!** Read and follow all the warnings and instructions written in this manual before using the scooter!

**WARNING!** You shall read, follow or understand all the basic operating instructions and warnings stated in this manual, otherwise, there is a serious risk of injuries as a result of collisions, falls, or loss of control.

**WARNING!** It is your duty to check as well as obey all the laws and regulations in your region!

**WARNING!** Common sense and good judgment are very important to avoid any accident or injury!

**WARNING!** The product should be properly assembled by an adult!

**WARNING!** To be used only under direct adult supervision!

**WARNING!** Keep your fingers and toes away from all moving parts of the scooter!

**WARNING!** Do not modify the product!

**WARNING!** Wear personal protective equipment (helmets, gloves, knee pads, elbow pads)! Not to be used in traffic!

**WARNING!** Maximum weight: 100 kg!

**WARNING!** The scooter shall be used with caution since skill is required to avoid falls or collisions causing injury to the user or third parties.

**WARNING!** Before each use please inspect the suspension, the fastening, and the fixing of the components and of the locking devices, because in the course of time they may lose their effectiveness.

**WARNING!** Do not ride in darkness!

**WARNING!** This product is not a toy.

**EN 14619, Class A**

## IMPORTANT NOTE AND bits of ADVICES

- The user of the product shall check the limitation of use according to regulations of road safety.
- Use the product on suitable surfaces: flat, clean, dry, and where possible away from other road users.
- Be very careful when riding on wet surfaces due to reduced wheel traction and braking action!
- Keep away from roads or where there is incoming traffic.
- Do not ride on a slippery surface.
- Avoid riding on stairs as the scooter might overturn causing serious injuries.
- Use at least the following protective equipment: hand/wrist, knee, head, and elbow protection.
- Please check that the steering system is correctly adjusted and that all connection components are firmly secured and not broken.
- Make sure that you are ready for use in order to avoid pitching or entrapment.
- Always wear shoes.
- The mechanism to reduce speed will get hot from continuous use, do not touch it after braking!
- The product shall be used by only 1 person!
- The product is not intended for extreme sports!
- Please keep your feet on the scooter plate and never ride with one single hand!
- The scooter with larger wheels is faster and more comfortable (fewer vibrations), but it is not suitable for sharp turns. The larger wheels contribute also to a longer glide distance when kicking the scooter (better rolling efficiency).

## **SERVICING AND MAINTENANCE**

### **PLEASE NOTE, THAT REGULAR MAINTENANCE ENHANCES THE SAFETY OF THE KICK SCOOTER.**

- Please check and tighten periodically the self-locking nuts and other self-locking fixings as they may lose their effectiveness.
- Replace the bearings if they are outworn! **WARNING!** – Bearings and wheels are consumable and will not be warranted!
- No modifications other than to the manufacturer's instructions shall be made.
- It is advised to inspect and maintain the scooter before use.
- Do not keep the scooter under direct sunlight or in wet places for a long time. The scooter may be damaged.
- Clean the scooter periodically and keep it dry.
- It is advised to use periodically oil for lubrication.
- You may use a damp cloth and mild detergent for cleaning the product.

## **SAFETY RIDING**

- This scooter under no circumstances should be ridden on a public highway or busy roads.
- Do not ride the product under the influence of alcohol, drugs, or medicines.
- Avoid uneven pavements or pot-holes, as this may cause you to lose control of the scooter.
- Do not ride the scooter in bad weather conditions, like strong wind, heavy rain, or snow.
- Please do not use the scooter or slow down the speed if the road conditions are poor.
- The product is intended for adolescents and adult users.
- Don't carry anything in your hand while riding the scooter. Always ride it with both hands.
- Avoid the use of earphones/ headphones as they may restrict your hearing.

- Do not wear loose/ hanging clothing or scarves, as they may get caught on the wheels.
- When you are riding near parked vehicles, look out for car doors that can be opened.
- Ensure that there are no broken components and that the locking devices are engaged.
- Always check the product for any loose screws, nuts, and bolts before letting adolescent ride it.

## **FOR THE ADOLESCENT SAFETY**

- Never leave the teenager unattended.
- Always check the product for any loose screws, nuts, and bolts before letting the teenager ride it.
- Instruct the teenager on how to ride the scooter safely and make sure he/she is capable of riding it.
- Make sure the teenager wears protective equipment to avoid injuries incl. helmets, gloves, knee pads, and elbow pads.
- Never let the teenager ride the scooter on the road.
- When riding the scooter make sure that your teenager yields the right of way to the pedestrians and doesn't ride too close to them.

## **BRAKING**

Picture 8. The rear wheel cover functions as a brake, apply the brake by stepping on the brake pedal (rear wheel cover). Before the first riding of your scooter it is recommended to train the applying of the brake at various speeds and in an open area, free from people and objects. **IMPORTANT!** Faster speeds require longer braking distances. Sudden braking on low-traction surfaces ( wet, sandy ) may cause wheel slips or falls

- Press the hand brake during pressing the foot brake (rear wheel fender) with pressure. When you apply the brake and fender, the scooter will slow down and stop.
- The brake mechanism heats up when used! Do not touch the brake mechanism immediately after braking! Please use the parking brake only in emergency situations, as its frequent use alone will deform the rear tire

## **ASSEMBLY**

### **STEP 1: UNFOLDING YOUR SCOOTER**

- Loosen the locking lever to release the locking mechanism. (Picture 3)
- Pull and keep pulling the release button, while raising the front end of the scooter to an upright position. You can stop pulling the release button when the front end of the scooter is raising. (Picture 2)
- Continue to raise the front end until you hear a "click" sound. Make sure the pin locks into the hole as shown. This means the front end has locked into place.

Close the locking lever to Tighten the locking mechanism. If locked into place correctly, the front end should not move forward or backward

### **HANDLEBAR PLACEMENT** (Picture 4)

The handlebars are held in place by spring-loaded buttons.

### **TO INSTALL HANDLEBARS:**

- Position the handlebars so that the button is aligned with the hole located on top of the steering tube.
- While pressing the button, push the handlebar end into the steering tube until the button "clicks" into the hole of

the steering tube. Close the bonnet

### STEP 3: HANDLEBAR HEIGHT ADJUSTMENT (Picture 6)

- Open the handlebar height adjustment clamp by releasing the adjustment clamp lever. (Picture 7)
- Extend the handlebar to the desired height. When the handlebar has extended to the preset height, a pop button inside the stem will engage into the hole. There are 3 preset heights. DO NOT exceed the maximum height.
- Hand-tighten the adjusting nut on the clamp until it is snug.
- Push the lever to the closed (locked) position. You should feel resistance while closing the lever. If no resistance is felt, reopen the lever, tighten the nut a couple more turns, close the lever, and test again. Repeat until resistance is felt. (Picture 7)

### WARNING

Failure to properly tighten the steering height adjustment clamp can result in improper handlebar movement and loss of steering control.

**Warning!** The product should be properly assembled by an adult.

### PARTS AND TOOLS

- Handlebar stem 1 pcs.
- Scooter body set 1 pcs.



**Didis LTD, Bulgaria**


Shumen 9700, N2 6 Trakia-iztok street

Tel.: +359 54 850 830

e-mail: [home.market@didis-ltd.com](mailto:home.market@didis-ltd.com)

e-mail: [export@didis-ltd.com](mailto:export@didis-ltd.com)

### Documents / Resources

	<p><a href="#">Lorelli SPRINTER Scooter</a> [pdf] Instruction Manual SPRINTER Scooter, SPRINTER, Scooter</p>
---	--