



LOPOLIGHT 201-003-FB-REVERSE Combined Sidelight User Guide

[Home](#) » [LOPOLIGHT](#) » LOPOLIGHT 201-003-FB-REVERSE Combined Sidelight User Guide 

Contents

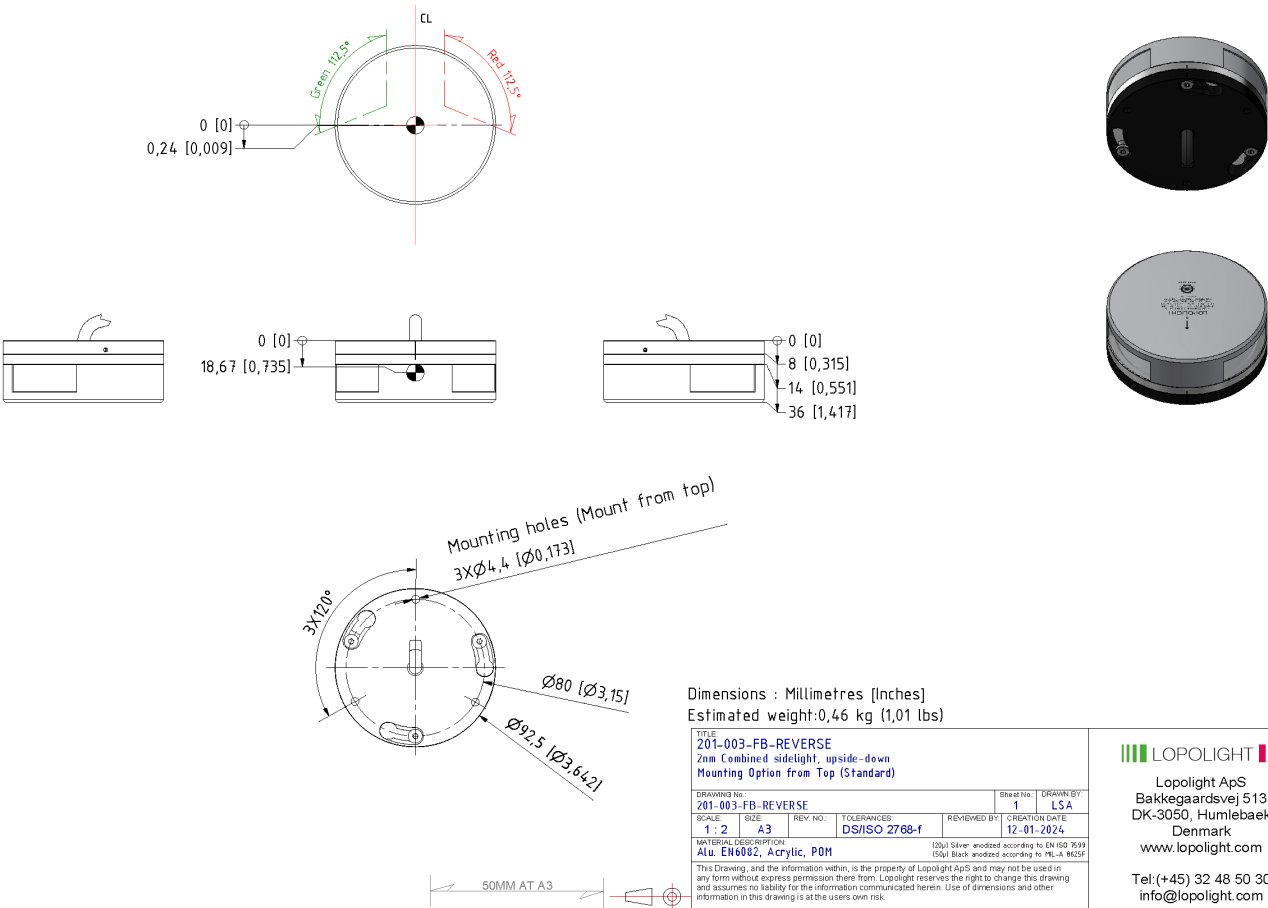
- [1 LOPOLIGHT 201-003-FB-REVERSE Combined Sidelight](#)
- [2 OVERVIEW](#)
- [3 Product Specifications](#)
- [4 Frequently Asked Questions \(FAQ\)](#)
 - [4.1 Q: Can the product be mounted in a different orientation?](#)
 - [4.2 Q: What materials are used in manufacturing?](#)
 - [4.3 Q: How do I contact support for further assistance?](#)
- [5 Documents / Resources](#)
 - [5.1 References](#)

LOPOLIGHT 201-003-FB-REVERSE Combined Sidelight

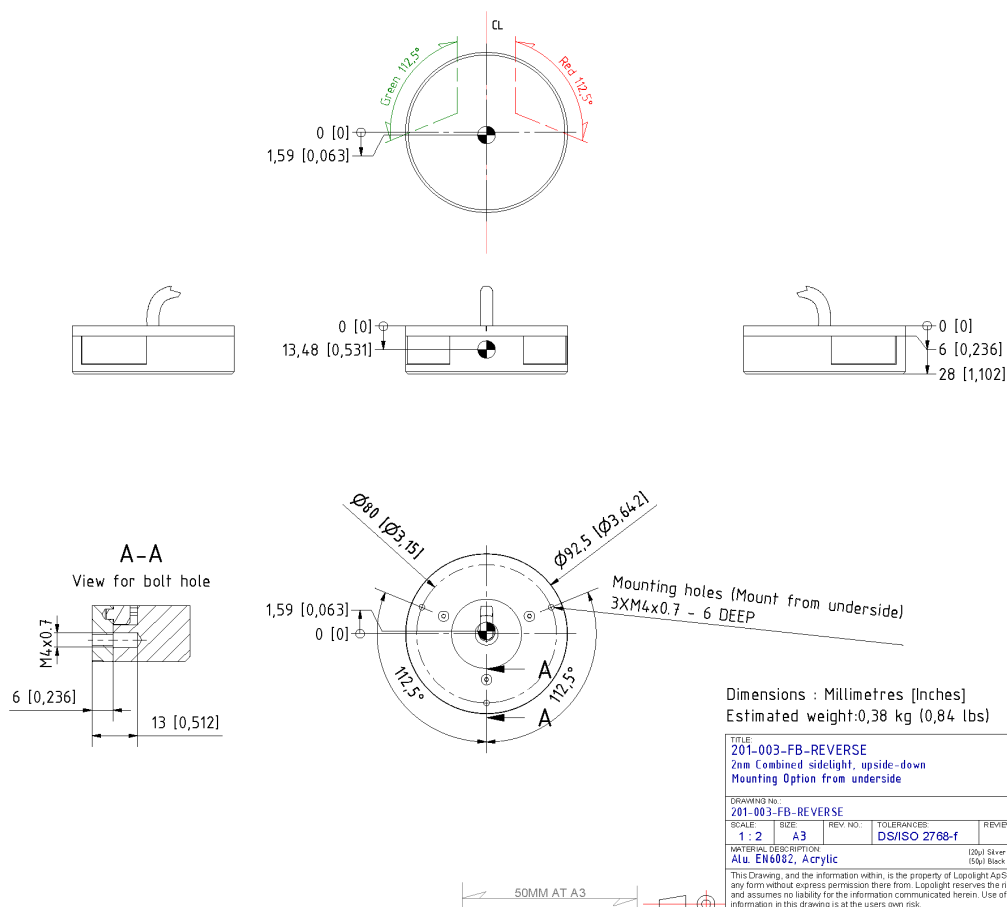


USER GUIDE

OVERVIEW



Lopolight ApS
 Bakkegaardsvej 513
 DK-3050, Humlebaek
 Denmark
www.lopolight.com
 Tel:(+45) 32 48 50 30
 info@lopolight.com



Lopolight ApS
 Bakkegaardsvej 513
 DK-3050, Humlebaek
 Denmark
www.lopolight.com
 Tel:(+45) 32 48 50 30
 info@lopolight.com

Product Specifications

- **Model:** 201-003-FB-REVERSE
- **Mounting Option:** Combined sidelight, upside-down
- **Material:** Aluminum EN6082, Acrylic, POM
- **Weight:** 0.46 kg (1.01 lbs) and 0.38 kg (0.84 lbs)
- **Dimensions:** Millimeters [Inches]

Frequently Asked Questions (FAQ)

Q: Can the product be mounted in a different orientation?

A: The product is designed for mounting options as specified in the manual. Mounting it differently may affect its performance.

Q: What materials are used in manufacturing?

A: The product is made of Aluminum EN6082, Acrylic, and POM materials for durability and reliability.


Q: How do I contact support for further assistance?

A: For any inquiries or support, you can reach out to Lopolight ApS at Tel:(+45) 32 48 50 30 or email info@lopolight.com.

Documents / Resources

	LOPOLIGHT 201-003-FB-REVERSE Combined Sidelight [pdf] User Guide 201-003-FB-REVERSE Combined Sidelight, 201-003-FB-REVERSE, Combined Sidelight, Sidelight
--	--

References

-  [Lopolight Navigation Light Solutions](#)
- [User Manual](#)

[Manuals+](#), [Privacy Policy](#)

This website is an independent publication and is neither affiliated with nor endorsed by any of the trademark owners. The "Bluetooth®" word mark and logos are registered trademarks owned by Bluetooth SIG, Inc. The "Wi-Fi®" word mark and logos are registered trademarks owned by the Wi-Fi Alliance. Any use of these marks on this website does not imply any affiliation with or endorsement.