



# LogTag VFC400-WI Data Logger Kit User Guide

[Home](#) » [LogTag](#) » LogTag VFC400-WI Data Logger Kit User Guide

## LogTag VFC400-WI Data Logger Kit



## Contents [ [hide](#)

- 1 What's Included
- 2 Downloading the Connection Wizard
- 3 Running the Connection Wizard
- 4 Connecting to your WiFi Network
- 5 LogTag Online
- 6 Registering a new device
- 7 Creating a Location
- 8 Physical Installation
- 9 Uploading Results to LogTag Online
- 10 Viewing Results
- 11 Documents / Resources
  - 11.1 References
- 12 Related Posts

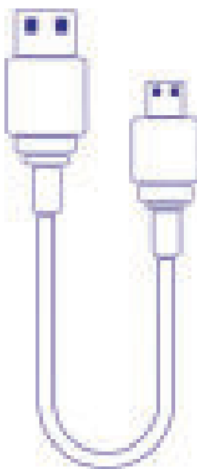
## What's Included

Please check you have each of the items shown below before continuing with setting up your VFC400-WI

- **VFC400-WI**



- **USB Cable**



- **x1 Adhesive strip**



- **AC Adaptor**



**Note:** The VFC400-WI is only compatible with some loggers. Please refer to the VFC website for the latest compatibility models.

## Downloading the Connection Wizard

Connect your VFC400-WI to your computer via the USB cable provided. The USB socket on the device is located at the bottom of the interface cradle.



Your VFC400-WI requires you to connect it to your WiFi Network. To do that, we have an easy tool for you to use called the LogTag Online Connection Wizard.

To download the LogTag Online Connection Wizard, please open your browser and type the link below to begin the download:



<https://www.vfcdataloggers.com/content/Software/connectionwizard.exe>

**Warning:**

Please ensure no other LogTag software is currently running on your computer before running the Wizard software.

## Running the Connection Wizard

Please ensure there is internet connection on your computer prior to starting this process.

This software doesn't require any setup or installation. Simply double-click the connectionwizard.exe file that you downloaded. The first page of the Wizard will be displayed.

When you're ready to begin, click "Start".



Easy Setup will be selected by default. Keep this option checked and click "Next".

You will be asked to sign in to your LogTag Online account. If you do not have an account, click the link below or alternatively, open your browser, type the following link into the address bar and follow the on-screen instructions.

<https://logtagonline.com/signup> or click Create a LogTag Online Account link.

You have now created your account and is now ready to set up connection of your VFC400-WI to the WiFi network.

## Connecting to your WiFi Network

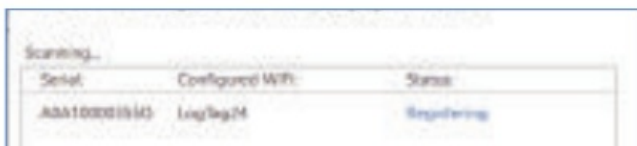
Type your LogTag Online account details and click "**Sign In**", followed by "**Next**".

The Wizard will now scan for any connected LogTag devices.

If the scan doesn't find any devices, double-check the device is plugged in to your computer with the USB cable provided and click "Scan Again".



As soon as a device has been identified, it will appear in the table (left) and automatically register that device to your LogTag Online account.



The Status will turn green with the text "Registered" once complete.



Click the "Next" button once you are ready.



1. Click the Network Name arrow to see nearby Wireless Networks options.

**Note:** This process can take up to 2 minutes, please wait whilst the network scan is in progress.

2. Once you have selected your WiFi Network from the list, type the password for the network. **Remember that passwords are case-sensitive.**

3. (Optional) Once you have typed your password, you can click the eye icon to reveal the password. Incorrectly typed passwords is one of the most frequent reasons why device setup fails.
4. Once you have selected your WiFi Network and typed the password, click **“Next”**.

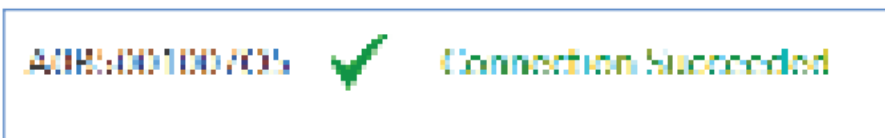
**Note:**

Some WiFi Networks won't appear in this list for security purposes. If you are aware that your network is one of these, you can manually type the name of your network (SSID) in the Network Name field instead of clicking the menu arrow.



The device is now being configured with the WiFi details you provided in the previous screen, which typically takes 10 seconds.

The Connection Wizard is now checking that the VFC400-WI can connect to your WiFi network and to LogTag Online.



1. Once the Wizard displays “Connection Succeeded”, click **“Next”** to complete the Wizard.
2. Click **“Close”** to close the Wizard or click the ‘LogTag Online Sign In page’ link to take you to LogTag Online website.

**Note:** The blue network LED flashes on VFC400-WI once connection is successful. If the red network LED is flashing, please refer to the product user guide for troubleshooting.

## LogTag Online

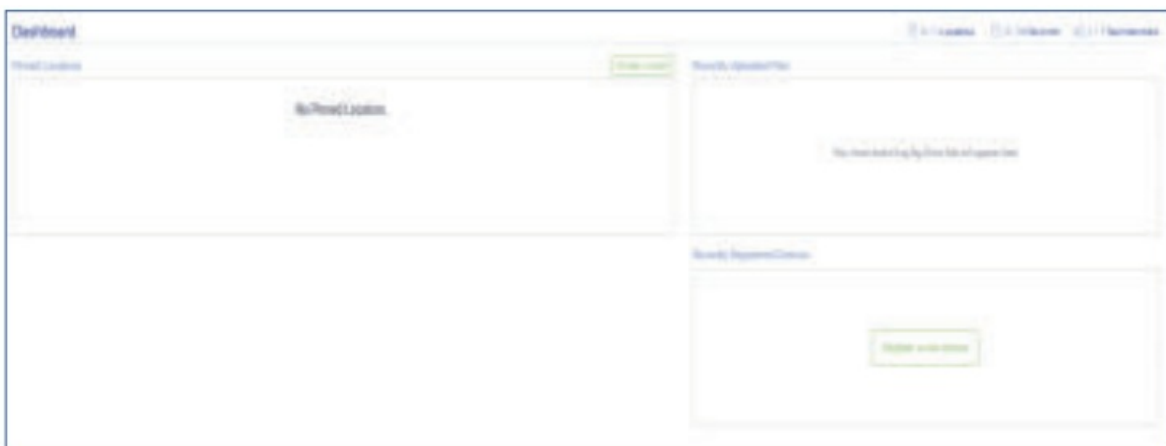
LogTag Online is a secure online service that stores the data recorded from your logger against your account.

## Signing in to your LogTag Online Account

Open your browser and navigate to: <https://logtagonline.com>

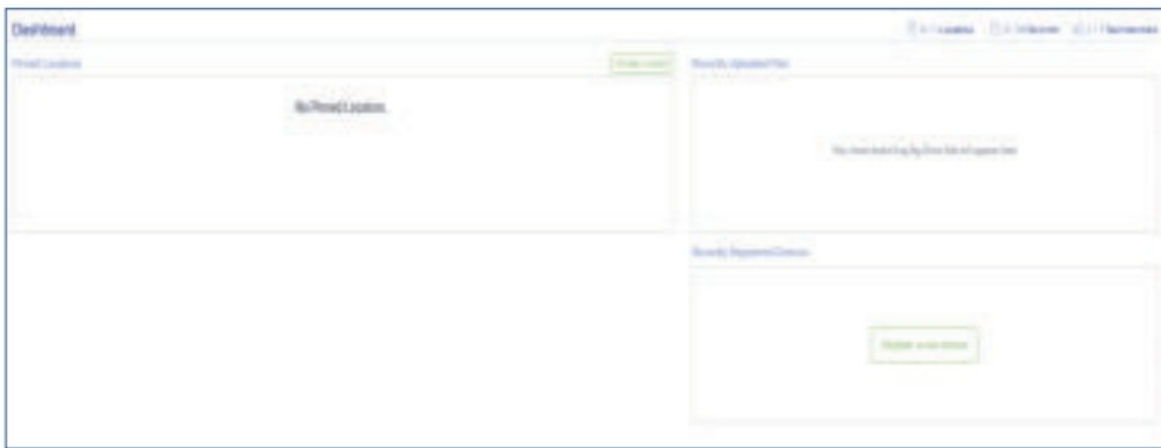


1. Type your Email and Password
2. Then click “Sign In”.
3. Upon signing in, you will see the Dashboard.



## Registering a new device

After you have docked a logger into your VFC400-WI it will automatically register the logger with LogTag Online and show it in the Recently Registered Devices section on the dashboard.



## Creating a Location

This process is easier if your logger is registered prior to creating a location.

In order to use the real-time data feature of the VFC400-W you will need to create a Location after registering your device

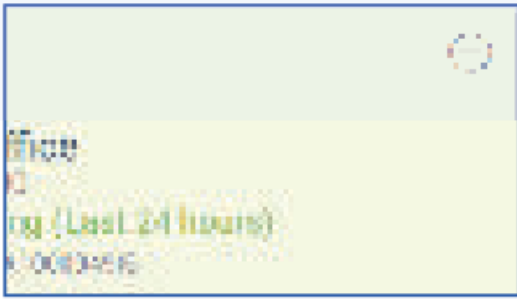
To create a Location, click the green “Add a Location” button from the Locations page.



For more information on completing the fields, or to edit/delete Location please refer to the LogTag Online user guide.

**Tip:** You can pin/unpin a Location to your dashboard by clicking the small “plus/minus” icon in the top right corner to show real-time data from the logger In LogTag Online.





## Physical Installation

Setup of your VFC400-WI is complete, to install the VFC400-WI:

1. Un-clip the interface from the mount base.
2. Mount base with adhesive strip or screws on a flat surface at your preferred site.
3. Clip back the interface onto the mount base
4. Plug in USB power cable



**Note:** Ensure the mounting surface is clean and dry before installing.



Make sure the USB cable from the VFC400-WI can reach the USB wall charger comfortably without obstruction.

## Uploading Results to LogTag Online

Please ensure your logger has started prior to docking it into the interface.



The Green 'Ready' LED is permanently on to indicate it is ready to accept a logger.



To upload your logger's data to LogTag Online, simply dock it into the VFC400-WI.

The red 'Busy/Error' LED is permanently on while the data is being downloaded from the logger.



The blue 'Network' LED rapidly flashes to indicate it is in the process of uploading data to LogTag Online cloud.



When the upload of data from the logger is complete, Amber and blue lights flash at the same time to indicate real-time temperature upload is active.

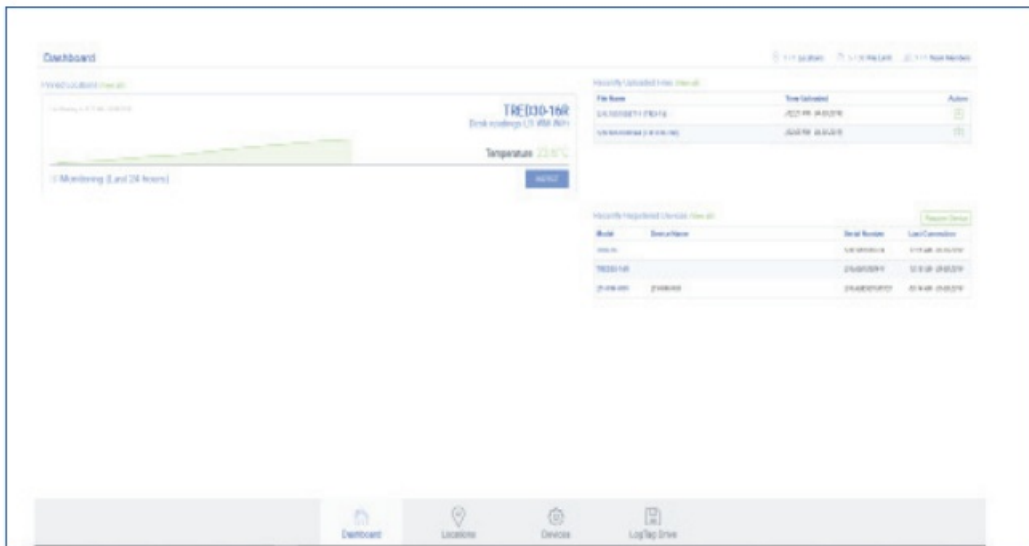


## Viewing Results

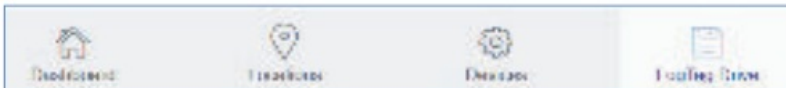
To view your data, sign in to your LogTag Online account.

For any pinned location you can see a snapshot of the data collected. To view the data in more detail, click on the miniature chart or click “Inspect”.

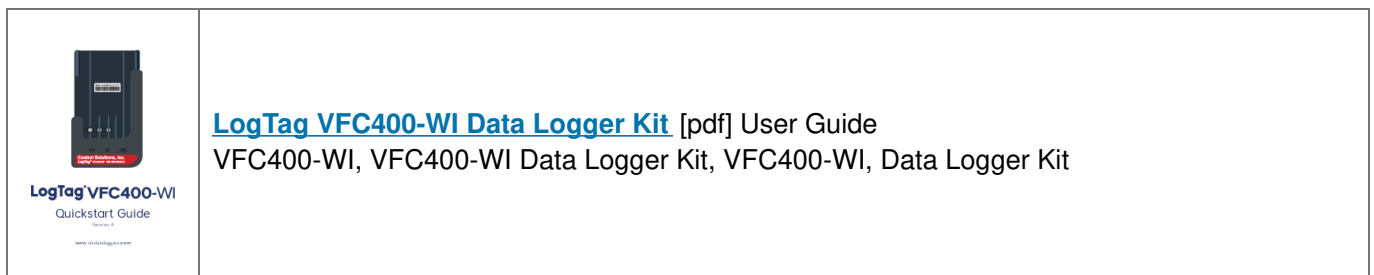
For any locations that are not pinned to the dashboard, click “Locations” and select the location you wish to see in more detail.



If the logger is not attached to a location, browse to LogTag Drive at the bottom of the dashboard to view data online along with options to share, edit and delete the data on your account.



## Documents / Resources



## References

- [!\[\]\(7a8011739ec4e250e2f89a547d75fb0a\_img.jpg\) Home | Control Solutions](#)
- [!\[\]\(07dce76283bf618e2364d95ae0021e26\_img.jpg\) LogTag Online](#)
- [!\[\]\(44ee86b940d3a0ca166486da8985875e\_img.jpg\) LogTag Online](#)
- [!\[\]\(2262b99b3a4953f9b3dfd64b89c00d2e\_img.jpg\) LogTag Online](#)
- [!\[\]\(72fd141c2b650e3974b4ac376f402874\_img.jpg\) LogTag Online](#)
- [!\[\]\(2477f3a1e0e03bb543b1e7662e8cfcee\_img.jpg\) LogTag Online](#)
- [!\[\]\(b3585519a49e38e8d8527211b2b955fa\_img.jpg\) LogTag Online](#)
- [!\[\]\(adbcc76182846c2ac4eb313487e4a2bb\_img.jpg\) LogTag Online](#)
- [!\[\]\(e44030763054d056f0c2076bb43543da\_img.jpg\) LogTag Online](#)
- [!\[\]\(69fd8fc035f6423999c8bc336ddaacf7\_img.jpg\) LogTag Online](#)
- [!\[\]\(6a9cf1e556842e523644649bd85d3d25\_img.jpg\) LogTag Online](#)
- [!\[\]\(4083627e3f79a04c0c7f38ba137b4c9d\_img.jpg\) LogTag Online](#)
- [!\[\]\(73ec6ee9195e4849ae70603cfd4b136c\_img.jpg\) LogTag Online](#)
- [!\[\]\(07685f16d3ee657bec65002c2e589a30\_img.jpg\) LogTag Online](#)
- [!\[\]\(e0b7ccd4c07799569395d0ab2ff94559\_img.jpg\) LogTag Online](#)
- [!\[\]\(ad6a69e4742b80dd889615dc90a5bce9\_img.jpg\) LogTag Online](#)
- [!\[\]\(baf8b7e9c0c4e692a9fffe5d773435c9\_img.jpg\) LogTag Online](#)
- [!\[\]\(1ec848e620a41cad33b0a80af7546646\_img.jpg\) LogTag Online](#)
- [!\[\]\(8abbd037145a06b24d5223d47ce33daf\_img.jpg\) LogTag Online](#)
- [!\[\]\(0086a544eb001fe37381de03c0450c24\_img.jpg\) LogTag Online](#)
- [!\[\]\(87a73380a48d122cb3ef6da419ef0ea6\_img.jpg\) LogTag Online](#)
- [!\[\]\(803dee0eccc05c0ca9461dfd0d997971\_img.jpg\) LogTag Online](#)
- [!\[\]\(7c99cab9845f54a765f08929ae13dee8\_img.jpg\) LogTag Online](#)