



LogTag UTRED30-WiFi Temperature Data Logger User Guide

[Home](#) » [LogTag](#) » LogTag UTRED30-WiFi Temperature Data Logger User Guide 

Contents

- 1 LogTag UTRED30-WiFi Temperature Data Logger
- 2 What's Included
- 3 Battery Installation
- 4 Running the Connection Wizard
- 5 Connecting to your WiFi Network
- 6 Remote Configuration through Log Tag Online
 - 6.1 Signing in to your Log Tag Online Account
- 7 Downloading Log Tag Analyzer
- 8 Configuration through Log Tag Analyzer
- 9 Installing the Wall Mount
- 10 Starting your UTRED30-WiFi
- 11 Viewing Second Temperature Channel
- 12 Documents / Resources
 - 12.1 References
- 13 Related Posts

LogTag®

LogTag UTRED30-WiFi Temperature Data Logger



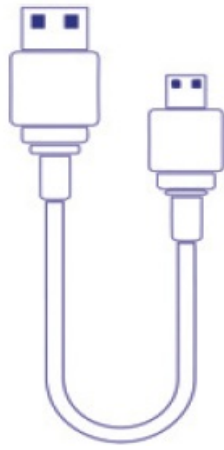
What's Included

Please check you have each of the items shown below before continuing with setting up your UTRED30-WiFi.

- UTRED30-WiFi



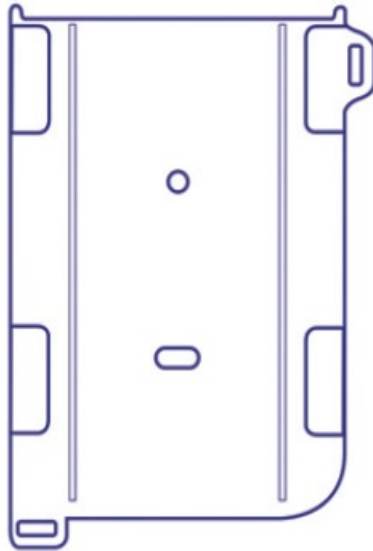
- USB Cable



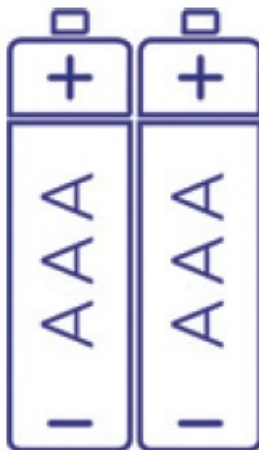
- AC Adapter (US and EU adapter only)



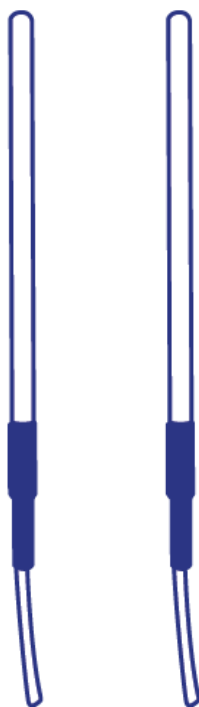
- Wall mount (Not Included)



- 2x AAA Battery (Not Included)



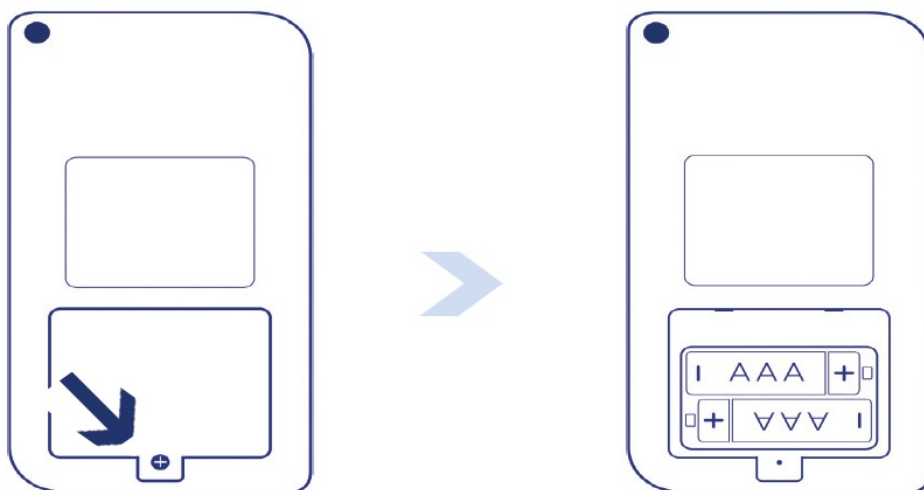
- ST100 External Probe (Not Included)



Battery Installation

A permanent power supply should be connected to the USB socket at the bottom of the device. Two AAA batteries are required as the back up source to ensure your device continues to log in the event of a power outage or accidental removal of power.

1. Remove the back cover of the UTRED30-WiFi case using the Phillips (cross-shaped) screwdriver.



2. Install the two AAA batteries taking note of the direction to install each battery.
3. Replace the battery cover to secure the batteries in place.

Running the Connection Wizard

Alternatively, to connect your logger using Bluetooth® connection capabilities on the Log Tag Mobile application refer too the Bluetooth® Connection Guide.

Note: Please ensure there is internet connection on your computer prior to starting this process.

Download the latest Connection Wizard from the Log Tag website.

<https://logtagrecorders.com/download/software/connectionwizard.exe>

1. Select Start and follow the instructions.



2. Sign in with your Log Tag Online account and select SIGN IN.

Select the Create a Log Tag Online Account if you do not have an account. You can also click or copy the following link and follow the on-screen instructions;

<https://logtagonline.com/signup>

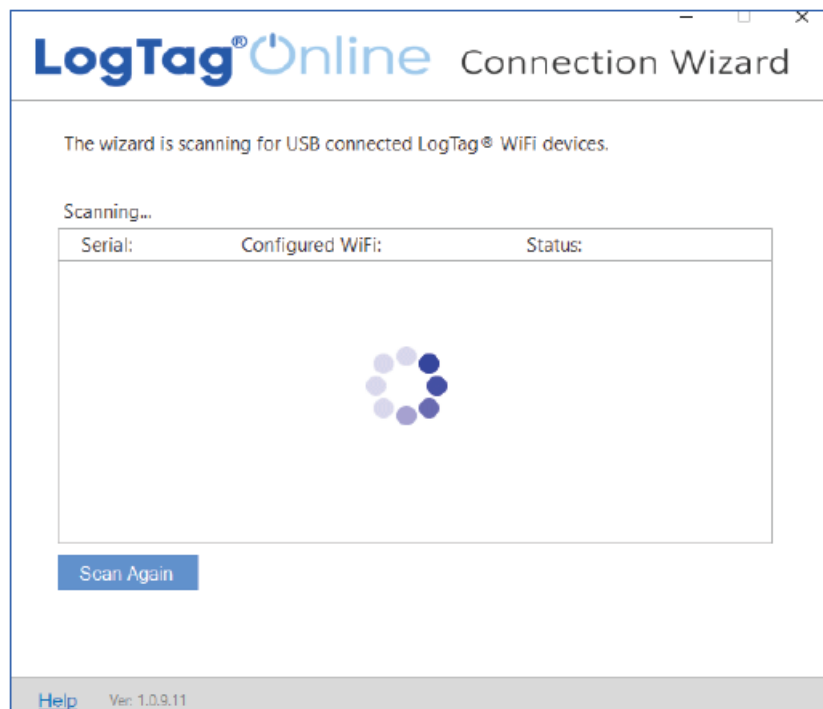
Note: If you selected Skip, you will need to manually register the device on Log Tag Online or repeat the Log Tag Online Connection Wizard.

3. The Connection Wizard will scan for connected Log Tag devices. Your device will be automatically registered to your Log Tag Online account as soon as your device has been identified.

- Select Scan Again if your device was not found.

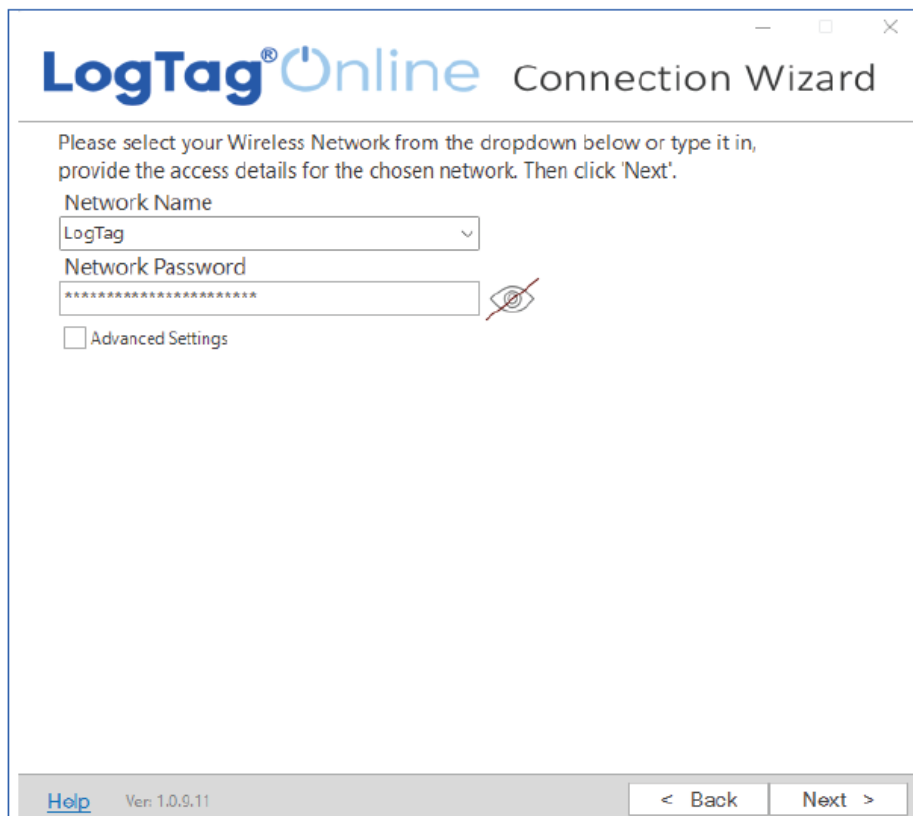


- Double-check your devices are plugged-in to your computer using the USB cable provided before scanning again.



Connecting to your WiFi Network


1. Connect your device to the network by selecting your Wi-Fi network name (or SSID) and providing the network password, then select Next.



LogTag®Online Connection Wizard

Please select your Wireless Network from the dropdown below or type it in, provide the access details for the chosen network. Then click 'Next'.

Network Name

Network Password
 

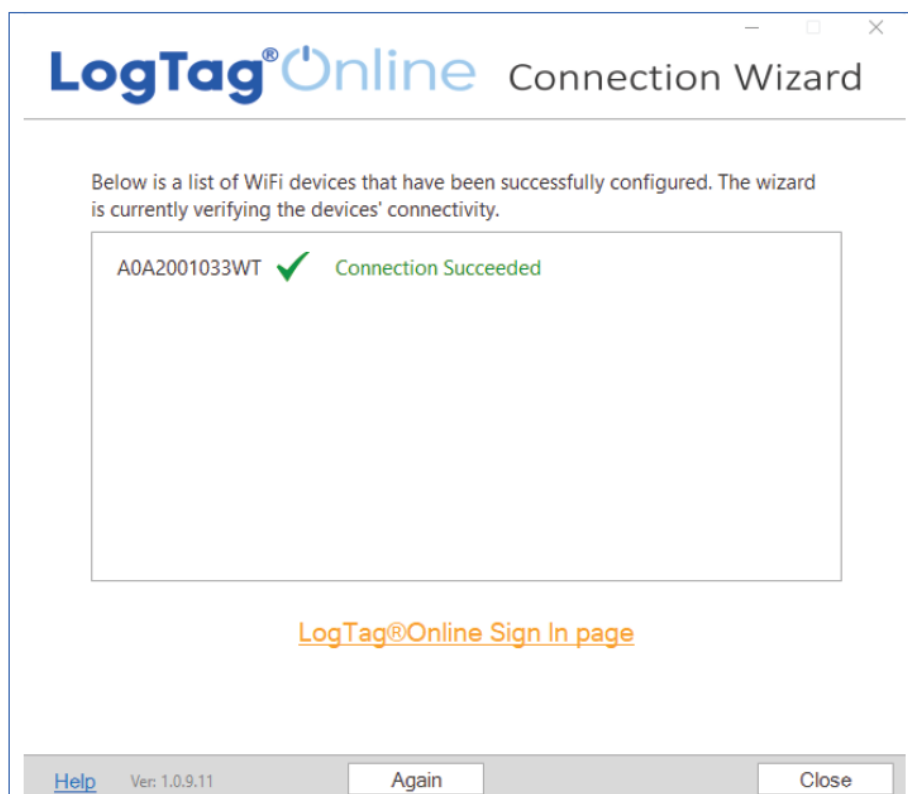
☐ Advanced Settings

[Help](#) Ver: 1.0.9.11 < Back Next >

Passwords are case-sensitive. Select the eye icon to view the password you entered.

Note: Incorrectly entered password is a common reason why your device failed to connect to your network. Some Wi-Fi Networks won't appear in this list for security purposes. If your network is one of those, you can manually type the name of your network (SSID) in the Network Name field.

2. Your device will connect to your local network using the provided Wi-Fi credentials (network name or SSID and password). It will also check its' connection to Log Tag Online. This typically takes 10 seconds. Select Close once the connection was successful.



LogTag®Online Connection Wizard

Below is a list of WiFi devices that have been successfully configured. The wizard is currently verifying the devices' connectivity.

A0A2001033WT	✓	Connection Succeeded
--------------	---	----------------------

[LogTag®Online Sign In page](#)

[Help](#) Ver: 1.0.9.11 Again Close

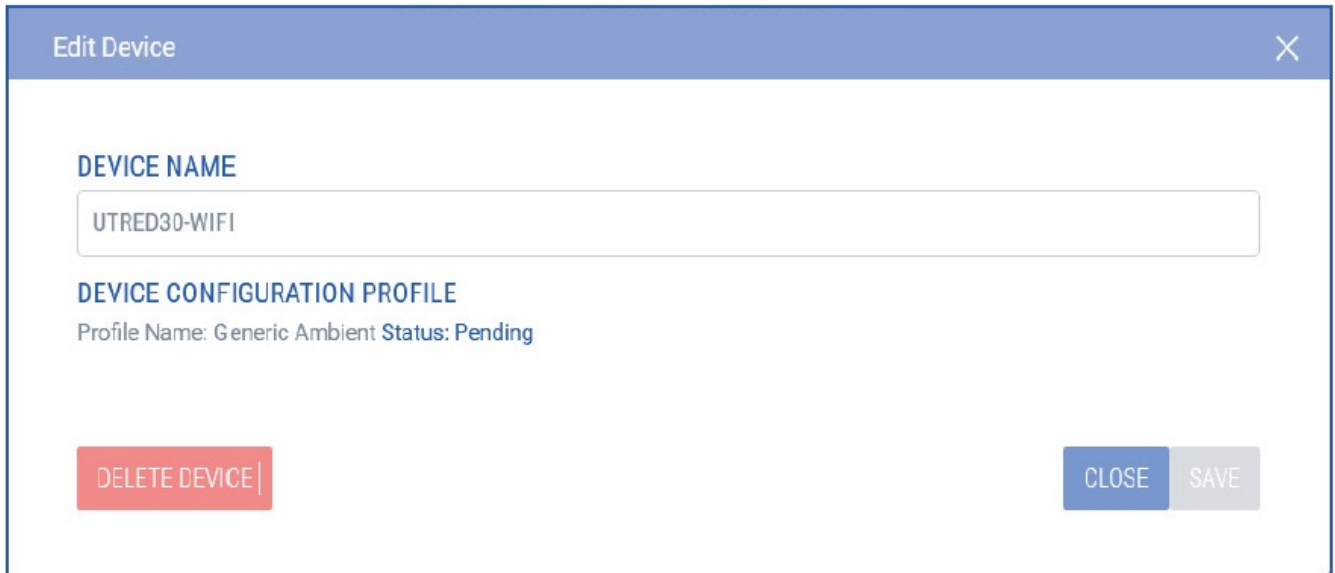
Select Again to repeat the steps to connect to your network.

3. Select the Log Tag Online Sign In page link to login to Log Tag Online.

Remote Configuration through Log Tag Online

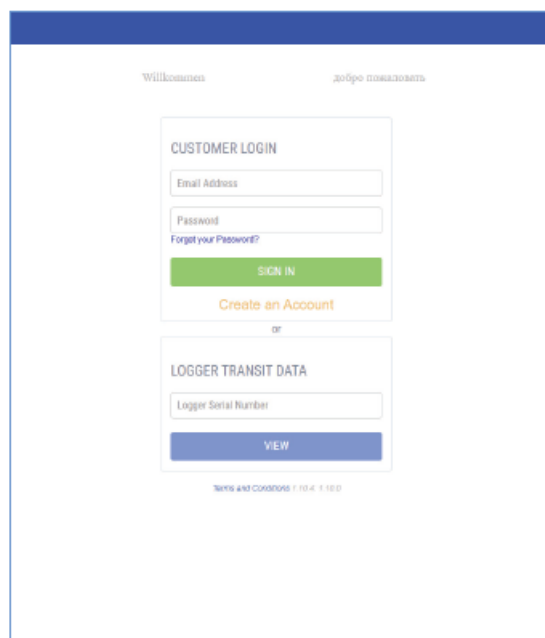
Log Tag Online is a secure online application that stores the data recorded from your logger against your account. Once your device is connected to your network, it can be configured remotely through Log Tag Online. Profile and time zone can be configured for the logger.

Ensure your device is plugged-in to your computer using the USB cable provided. If the profile is shown as pending configuration, you can speed up the connection between your logger and Log Tag Online by pressing and holding both the CHANNEL FUNCTION and REVIEW/MARK buttons on the logger simultaneously for approximately 6 seconds.

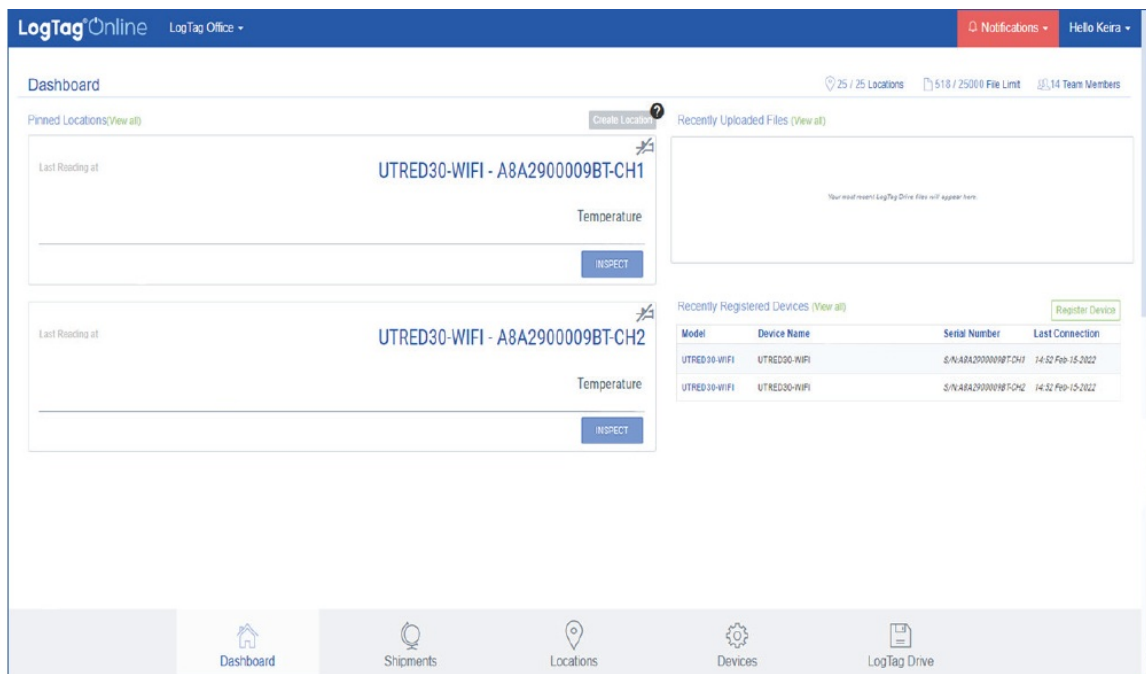


Signing in to your Log Tag Online Account

1. Login to Log Tag Online; <https://logtagonline.com>



The location for the first channel will be displayed in the pinned locations of the Dashboard.



Manually register your device if you cannot see the location. The second location will need to be created manually. Each channel can be assigned to its location. Please refer to the Activation Codes section in the Log Tag Online User Guide for more information.

The probe inserted into the loggers CH2 port will automatically register as CH1 in the location description when only one probe is inserted into the logger.

Note: When registering your UTRED30-WiFi Dual Channel Logger to your Log Tag Online account, a location is auto-created for the first channel when your team has a location slot available from your current activation code;

- As soon as your device has been identified through the Connection Wizard,
- Manual registration by selecting Register Device in the registered devices table on the Dashboard or in the Devices screen.

2. Navigate to Location screen and select to edit the location created for the first channel of your registered device.

3. In the settings tab of the Location Details screen, select the profile to apply to your logger from the Logger Configuration Profile drop-down that best suits your needs.
4. Select the time zone for the location from the Logger Time zone drop-down.
5. Select Save to apply the configuration.

6. Navigate to the Devices tab and select on your devices name. The configuration profile will be shown along with its current status.

Downloading Log Tag Analyzer

The minimum recommended version is Log Tag Analyzer 3.2.0

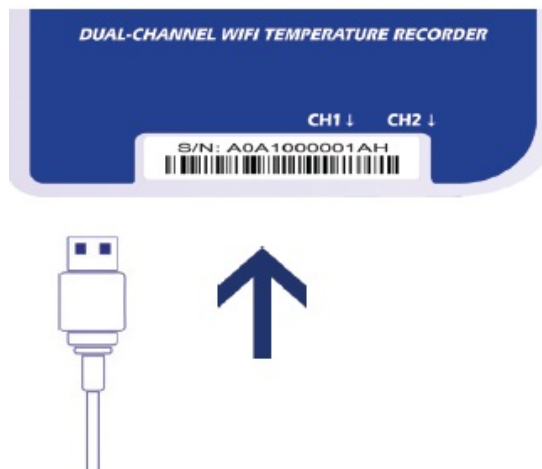
1. Download Log Tag Analyzer from the Log Tag website:
<https://logtagrecorders.com/software/LTA3/>
2. Double-click the downloaded file to open the Log Tag Analyzer Setup Wizard and follow the on-screen prompts to install.
3. Select Finish to exit the setup wizard.
4. Open the Log Tag Analyzer application.

Note: If you already have Log Tag Analyzer installed, please see whether you need to update to the latest version by clicking 'Check Internet for updates' from the 'Help' menu.

Warning: Please ensure no other Log Tag software is currently running on your computer before running the Analyzer software.

Configuration through Log Tag Analyzer

Connect your UTRED30-WiFi to your computer via the USB cable provided. The USB socket on the device is located on the bottom, protected by a rubber seal.



1. Select Configure from the Log Tag menu or select the Wizard icon.
2. Adjust your logger configuration settings as required.
For more information on configuration settings, please refer to Configuring the UTRED30-WiFi in the Product User Guide or press F1 for help.
3. Select Configure to upload the configuration settings to the logger.
4. Select Close to complete and exit the configuration page.

Installing the Wall Mount

- Setup of your UTRED30-WiFi is complete.
- Attach the Wall Mount Bracket on the side of your refrigerator or freezer, preferably at eye-level with the

adhesive strip provided with the Wall Mount.

- Before sticking on the Wall Mount, make sure the probe cable and the USB cable from the UTRED30-WiFi can both reach the device comfortably without obstruction or at risk of being accidentally disconnected if knocked.
- Insert the UTRED30-WiFi into the Wall Mount, connect the USB and sensor cables. The display should show the word “READY” as seen in the image (right).



Note: Both the cloud and WiFi symbols are showing in the top left with a tick in each to confirm successful setup of the device.

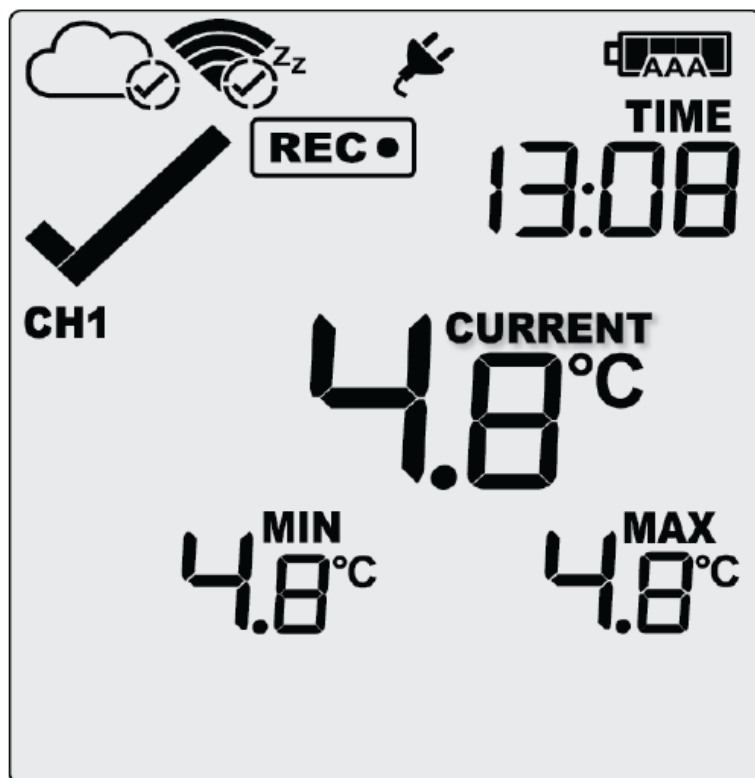
Starting your UTRED30-WiFi

1. Press and hold the START/Clear/Stop button.
2. STARTING will appear along with READY. Release the button once READY disappears.
3. The UTRED30-WiFi now records temperature data.



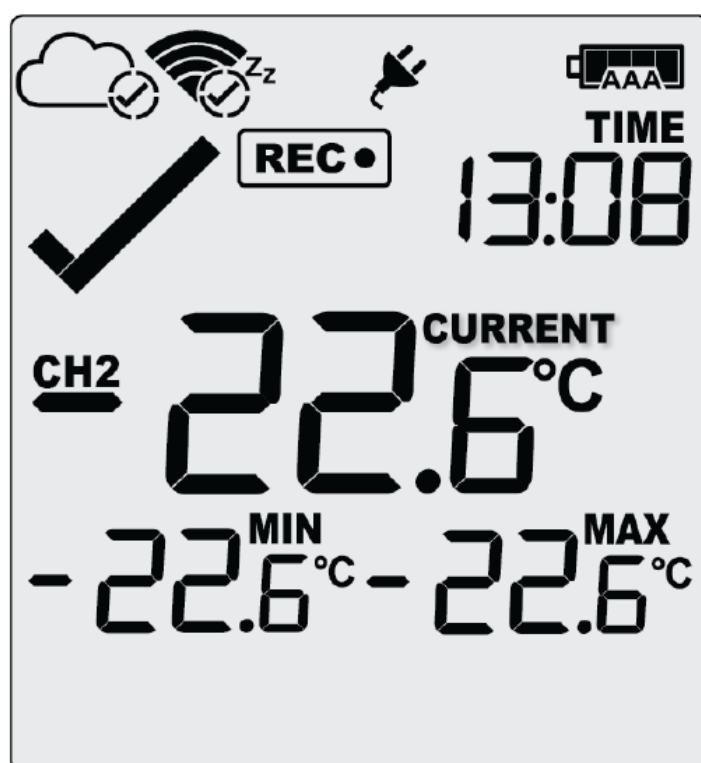
The Logger will not start if:

- You release the button before READY disappears.
- You keep holding the button for more than 2 seconds after READY disappears.
- The backup battery is critically low and the Logger is not connected to power.




Viewing Second Temperature Channel

- Press the CHANNEL FUNCTION button to change the channel on screen.
- In this example, the display switched from CH1 to CH2.
- The device will toggle between the two channels if both external probes are configured.







Note: The probe cover can be inserted in an unused channel port.

Documents / Resources

 <p>LogTag UTRED30-WiFi Quick Start Guide Version 1.1 July 2022 www.logtag.com</p>	<p>LogTag UTRED30-WiFi Temperature Data Logger [pdf] User Guide UTRED30-WiFi, Temperature Data Logger, Data Logger, Temperature Logger, Logger, UTRED 30-WiFi</p>
---------------------------------------------------------------------------------------------------------------------------------------------------------------------------------	---------------------------------------------------------------------------------------------------------------------------------------------------------------------------------------

References

-  [Home Data Loggers - LogTag-US Official Website](#)
-  [LogTag Online](#)
-  [LogTag Online](#)
-  [LogTag | LTA3](#)