



LogTag LTI-WiFi Desktop WiFi Interface Cradle User Guide

[Home](#) » [LogTag](#) » LogTag LTI-WiFi Desktop WiFi Interface Cradle User Guide 

Contents

- [1 LogTag LTI-WiFi Desktop WiFi Interface Cradle](#)
- [2 What's Included](#)
- [3 Downloading the Connection Wizard](#)
- [4 Connecting to your WiFi Network](#)
- [5 LogTag Online](#)
- [6 Registering a new device & Downloading Results](#)
- [7 Downloading Results \(continued...\)](#)
- [8 Documents / Resources](#)
 - [8.1 References](#)
- [9 Related Posts](#)

LogTag

LogTag LTI-WiFi Desktop WiFi Interface Cradle

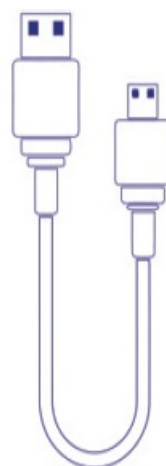


What's Included

Please check you have each of the items shown below before continuing with setting up your LTI-WiFi.



LTI-WiFi



USB Cable

Note:

The LTI-WiFi cradle can be used with any standard LogTag loggers with 3 silver contact pins

Downloading the Connection Wizard

Connect your LTI-WiFi to your computer via the USB cable. The USB socket on the interface is located at the back of the interface cradle.



Your LTI-WiFi requires you to connect it to your WiFi Network. To do that, we have an easy tool for you to use called the LogTag Online Connection Wizard.

Note:

If you have the latest LogTag Analyzer (version 3.1.6 onwards), you can just run the wizard instead without having to download it by opening LogTag Analyzer then clicking 'Connection Wizard' from the 'LogTag Online' menu. Alternatively, you can download the LogTag Online Connection Wizard here. Please click the link below: <https://logtagrecorders.com/wp-content/uploads/connectionwizard.exelf> if you have issues with the link above, you can download the .zip version instead and ensure you unzip the file before running it via the link below: <https://logtagrecorders.com/wp-content/uploads/connectionwizard.zip> Warning: Please ensure no other

LogTag software is currently running on your computer before running the Wizard software. Open LogTag Analyzer and select 'Connection Wizard' from the 'LogTag Online' menu. The first page of the Wizard will be displayed. When you're ready to begin, click "Start".



You will be asked to sign in to your LogTag Online account. If you do not have an account, click the link below or alternatively, open your browser, type the following link into the address bar and follow the on-screen instructions. <https://logtagonline.com/signup> or click Create a LogTag Online Account link.



Note:

If you 'Skip' this step, you will need to manually register the device on LogTag Online or repeat the LogTag Online Connection Wizard. Click 'Sign In' after you have entered your login details to continue setting up WiFi on your LTI-WiFi. You have now created your account and is now ready to set up connection of your LTI-WiFi to the WiFi network. The Wizard will now scan for any connected LogTag devices. If the scan doesn't find any devices, double-check the device is plugged in to your computer with the USB cable provided and click "Scan Again". As soon as a device has been identified, it will appear in the table (left) and automatically register that device to your LogTag Online account.



Scanning...		
Serial:	Configured WiFi:	Status:
A0A10000355O	LogTag24	Registering

Connecting to your WiFi Network

Serial:	Configured WiFi:	Status:
A0A10000355O	LogTag24	Registered

The Status will turn green with the text “Registered” once complete. If one or more device(s) are identified and re-identified and re-registered, the screen automatically switches to the next screen.



1. Network settings are automatically populated from PC settings by default, if it can be discovered. Alternatively, click the Network Name arrow to see nearby Wireless Networks options and select your WiFi Network from the

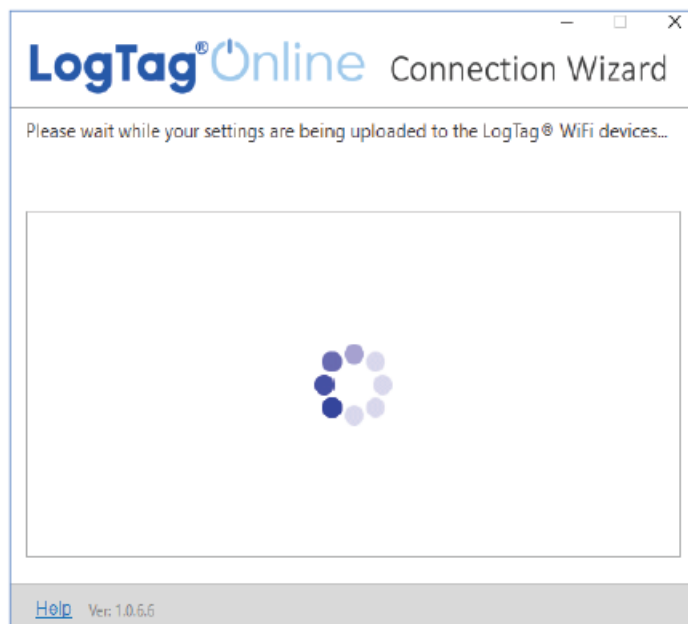
list and type the password for the network. Remember that passwords are case-sensitive.

Note:

If you need to make any Advanced Network setting changes, select the 'Advanced Settings' box.

2. Once you have provided the chosen network and password, or Advanced Network settings, click "Next".

Note: Some WiFi Networks won't appear in this list for security purposes. If you are aware that your network is one of these, you can manually type the name of your network (SSID) in the Network Name field instead of clicking the menu arrow.



3. The device is now being configured with the WiFi details you provided in the previous screen, which typically takes 10 seconds. The Connection Wizard is now checking that the LTI-WIFI can connect to your WiFi network and to LogTag Online. The red network LED blinks while the



interface establishes a connection with the wireless network. Once the Wizard displays “Config Complete. Check Device for status”, click “Close” to close the Connection Wizard or click ‘LogTag Online Sign In page’ link to take you to the LogTag Online website. Or click “Again” if you want to run the Wizard to repeat the configuration process from the beginning.

Note:

The network LED on the LTI-WiFi turns solid blue after 15-20 seconds once connection is successful. If the red network LED is flashing, please check you have entered the WiFi credentials correctly. If you are continuing to encounter networking or logger communications issues, please refer to the troubleshooting section by opening your browser and typing the below URL in the address bar: [help.logtagrecorders.com/WiFi](http://help.logtagrecorders.com/WiFiInterface/Topics/Interfaces/Troubleshooting.htm)

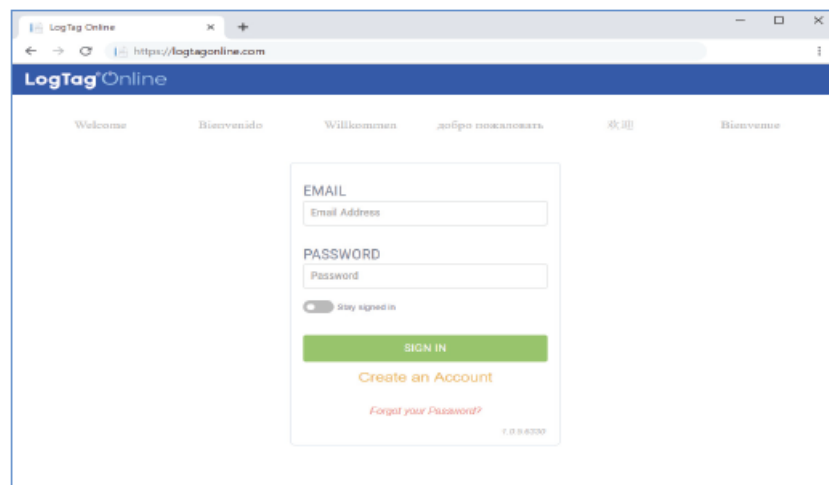
[Interface/Topics/Interfaces/Troubleshooting.htm](http://help.logtagrecorders.com/WiFiInterface/Topics/Interfaces/Troubleshooting.htm)

LogTag Online

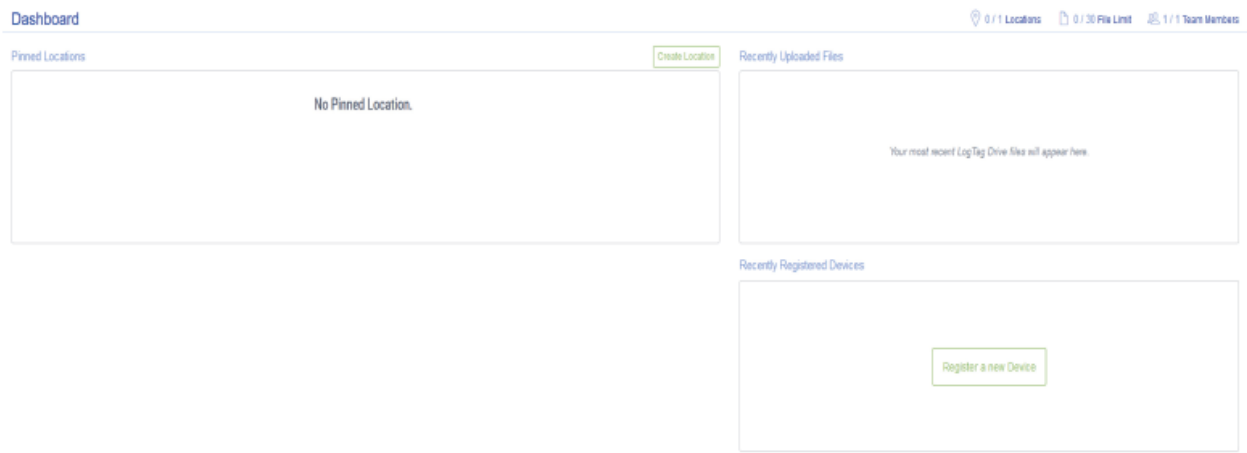
LogTag Online is a secure online service that stores the data recorded from your logger against your account.

Signing in to your LogTag Online Account

Click this link or open your browser and navigate to: <https://logtagonline.co>



1. Type your Email and Password
2. Then click “Sign In”.
3. Upon signing in, you will see the Dashboard.

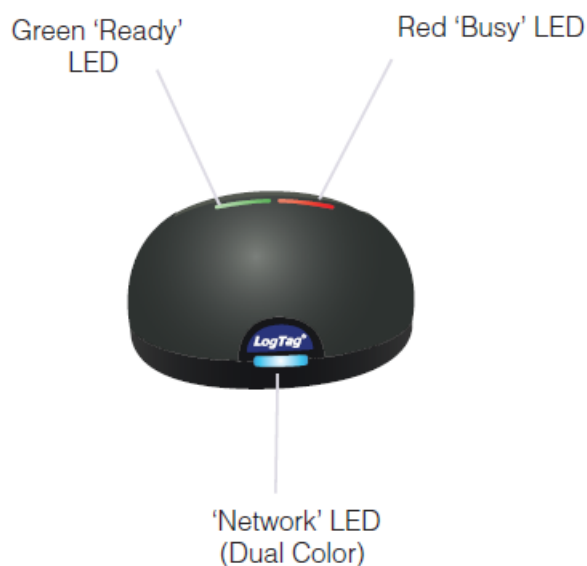


Registering a new device & Downloading Results

Connect your LTI-WiFi to your computer via the USB cable. The USB socket on the interface is located at the back of the interface cradle. Please ensure the LTI-WiFi is connected to the WiFi network and the cloud server.



The blue 'network' LED is permanently on to indicate it is connected to LogTag Online cloud server.



The red 'Busy/Error' LED is permanently on while the data is being downloaded from the logger.



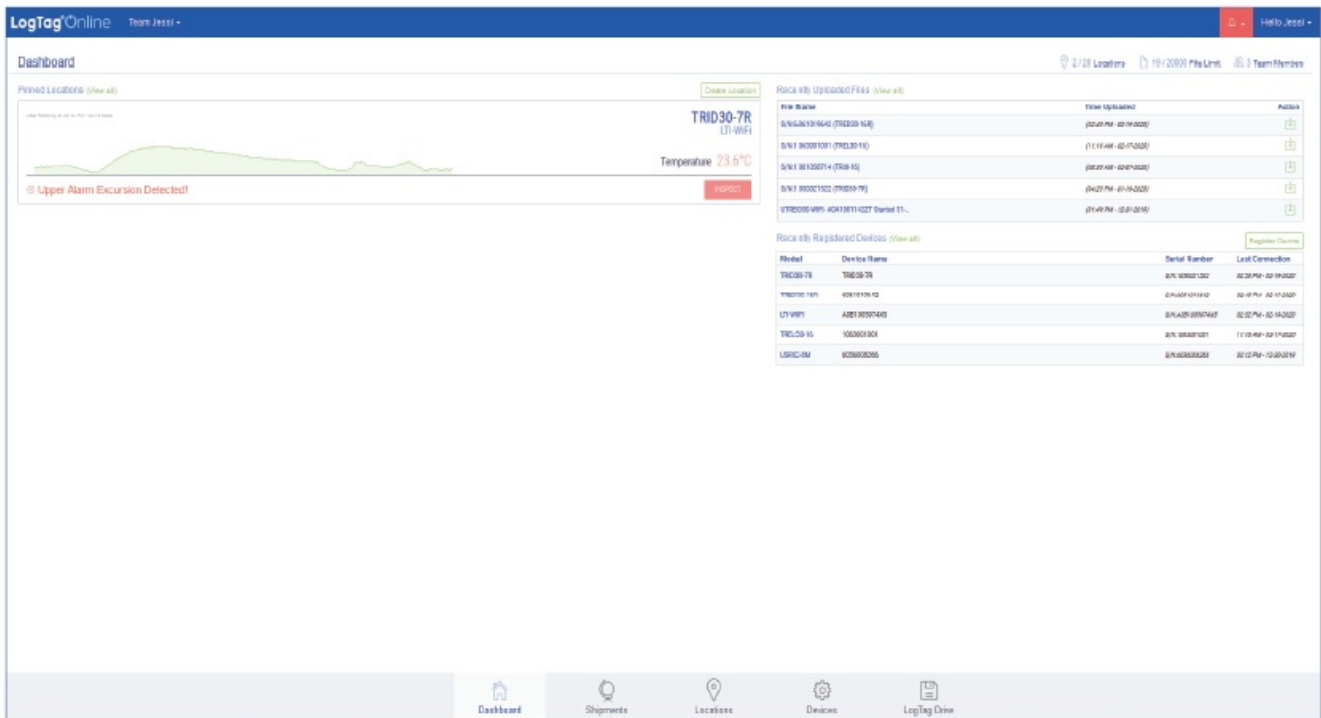
The green 'Ready' LED flashes to indicate the download was successful.



After you have docked a logger into LTI-WiFi, it will automatically register the logger in LogTag Online and show in the Recently Registered Devices section of the dashboard.

Downloading Results (continued...)


Data is also downloaded from the logger and show up as LTD files in the 'Recently Uploaded Files' section on the main dashboard in LogTag Online or as saved files in LogTag Drive.






Note:

If your logger is attached to a location, the data will be added to the location, and no data file will appear in the LogTag Drive.

Documents / Resources

<div> LogTag LTI-WiFi Quick Start Guide <small>Version 8 - February 2020 www.logtagrecorders.com</small></div>	<p>LogTag LTI-WiFi Desktop WiFi Interface Cradle [pdf] User Guide</p> <p>LTI-WiFi, Desktop WiFi Interface Cradle, LTI-WiFi Desktop WiFi Interface Cradle, WiFi Interface Cradle, Interface Cradle, Cradle</p>
--	---

References

-  [LogTag Data Loggers](#)
-  [LogTag Online](#)
-  [LogTag Online](#)