



LogTag Analyzer 3 Software User Guide

[Home](#) » [LogTag](#) » LogTag Analyzer 3 Software User Guide 

Contents

- 1 [LogTag Analyzer 3 Software](#)
- 2 [DOWNLOADING THE SOFTWARE](#)
- 3 [INSTALLATION & SETUP](#)
- 4 [USER INTERFACE](#)
- 5 [BASIC LOGGER CONFIGURATION](#)
- 6 [ADDITIONAL CONFIGURATION PARAMETERS](#)
- 7 [DOWNLOADING THE RESULTS](#)
- 8 [DATA ANALYSIS](#)
- 9 [EXPORTING AND SHARING DATA](#)
- 10 [CUSTOMIZING THE SOFTWARE](#)
- 11 [GETTING HELP](#)
- 12 [Documents / Resources](#)
 - 12.1 [References](#)
- 13 [Related Posts](#)

LogTag[®]

LogTag Analyzer 3 Software



This quick start guide covers installation, setup, and use for LogTag® Analyzer 3.

LogTag® Analyzer is the free companion software for LogTag® logger products, used for configuration, download, and data analysis. To run the software, you will need a PC running Windows 7 or later, and a free port. It offers a wide range of charting and reporting options as well as automation tasks for configuring, downloading and sharing data. This guide gives a brief overview of its functionality; for detailed instructions of all features please refer to the comprehensive LogTag® Analyzer User Guide, installed with the software, or invoke the built-in help function by pressing the F1 key.

DOWNLOADING THE SOFTWARE

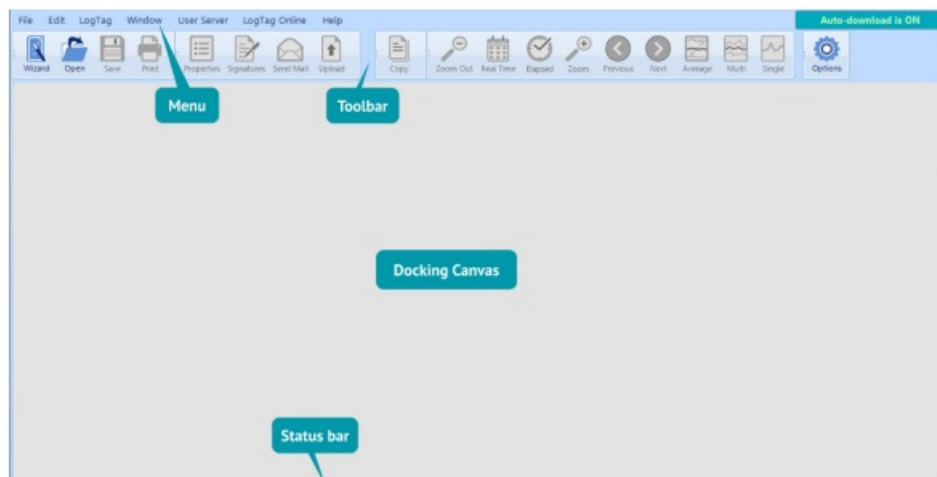
You can get your free copy of the LogTag® Analyzer software from LogTag's website. Using your browser, navigate to <https://logtagrecorders.com/software/ita3/download/> and click Download Now to download the installer file. Please note that you will require administrator credentials for the PC on which you install the software.

INSTALLATION & SETUP

Double-click the installer file you downloaded – it will be stored in your Downloads folder and called Itanalyzer_32r12.exe or similar. If you received a CD or USB Flash Drive containing the software, start it from there. Select the language, accept the license conditions and follow the on-screen instructions. When complete, a new icon will be available on the desktop and in your apps list, which you use to start LogTag® Analyzer. If you use non-USB loggers (these have 3 silver contact pins on the rear) you require an LTI-HID interface. Connect it to a USB port on your PC. It can be left permanently connected, so you can insert loggers from configuration or download. If you use a USB logger with a built-in USB plug, connect it to a free USB port when needed.

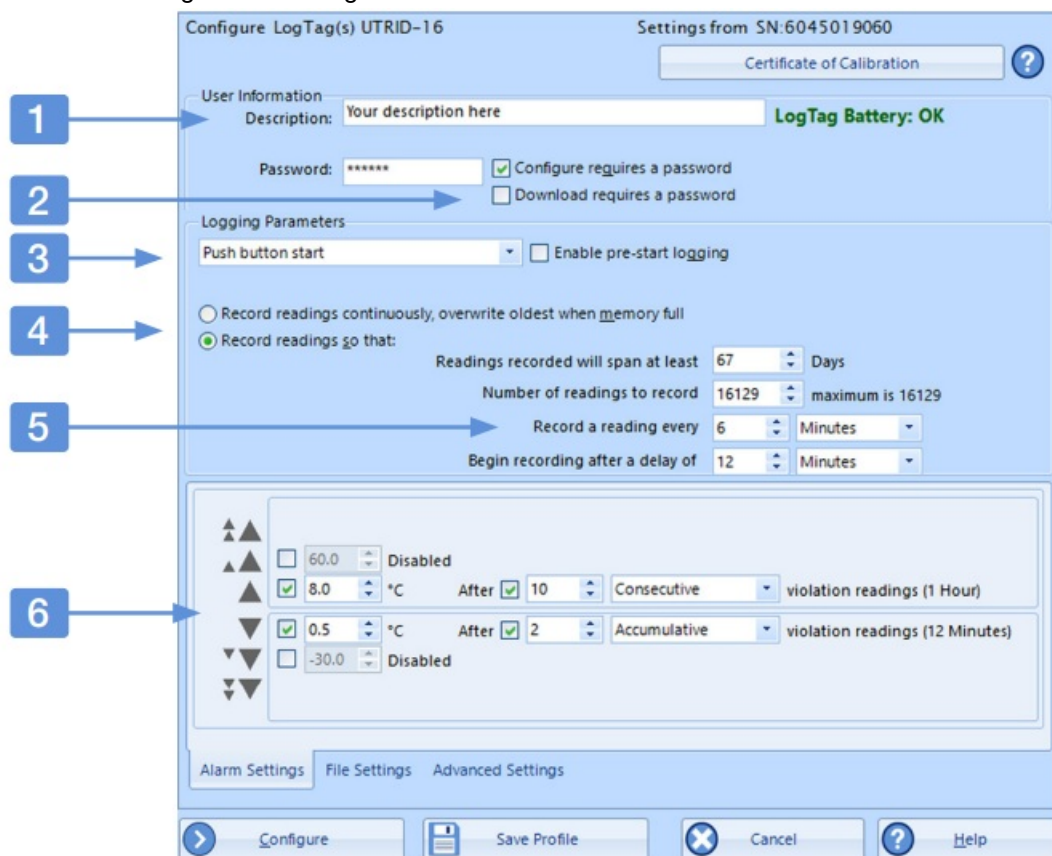
USER INTERFACE

Once you have started LogTag® Analyzer, the main window will open. From here, you have access to menu and toolbar commands. More elements will become visible as soon as you open a file or download a logger.



BASIC LOGGER CONFIGURATION

Before a logger can be used, it must be set up with the parameters required for starting and recording temperature values. It is also desirable to set alarm conditions, so you can be informed when outof- specification temperatures were recorded. To configure a USB logger, first plug it into a USB port on your PC. If you use an interface cradle, put the logger in the interface, upright, with the silver contacts towards the rear. Click Configure from the LogTag menu, or press F3. The configuration dialogue will be shown:



The top contains general parameters, while the bottom shows several tabs with additional settings.

1. Add a description for the logger or the goods it accompanies
2. Optionally, specify a password for next configure or download.
3. Select Date/Time start, or Push button start (with optional pre-start logging).
4. Specify how long you wish to record for (with optional start delay).

5. Choose the time duration between each reading.
6. Specify the upper and lower temperature alarm trigger conditions.

Add alarms as required, or change any alarms already suggested. Depending on the logger model, other tabs may be present, which allow entering wireless settings, humidity alarms, alarms for a second recording channel, and others. Some models don't allow certain parameters to be changed (such as the vaxtag®), as they are mandated by a certifying body.

ADDITIONAL CONFIGURATION PARAMETERS

While the basic configuration is sufficient to prepare a logger for logging, you can enhance the information you receive at the end of a trip by setting some additional parameters. These are accessed by clicking the corresponding tab.

File Settings Tab

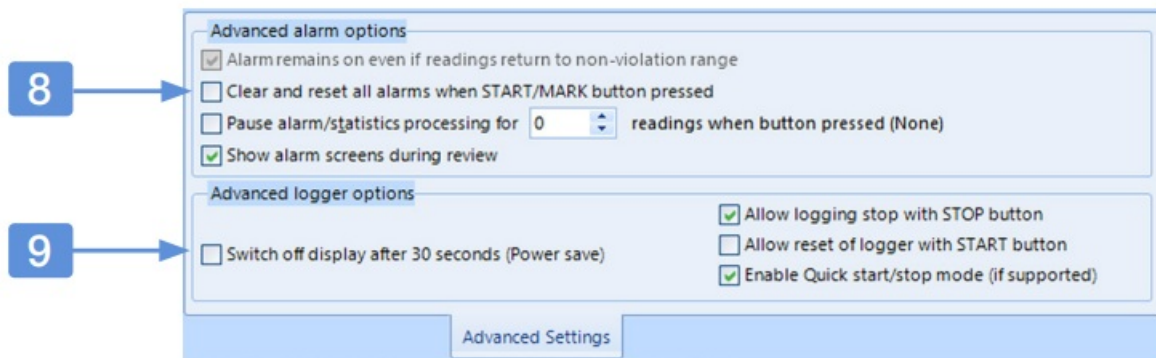
This tab is only available for USB loggers and determines the composition of the PDF file.

Select each element you wish to display on the PDF:

- Enable or disable the data list, alarm, and grid lines
- Determine a date and time formats
- Select, which onboard files should be generated
- Choose PDF temperature units, language, and time zone
- Select the scaling of the chart.

Advanced Settings Tab

This tab is available for loggers with a display and controls how the logger's buttons are used to control the alarms and other advanced options.



Complete any advanced alarm-related settings

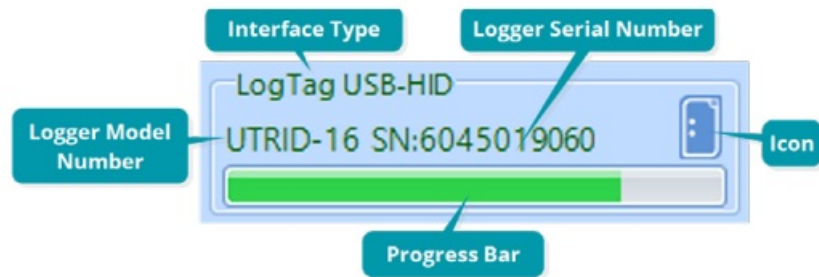
- Define if an alarm remains shown on the display even if temperatures return to normal and if an alarm can be cleared
- Set the number of paused readings when a button is pressed

Control advanced logger settings

- Allow stopping and resetting the logger
- Enable the power save option



When you have entered all parameters, click Configure. The logger will now be configured with the parameters you entered. A progress bar will let you know when the configuration is finished. Remove the logger from the interface, or if it is a USB logger, unplug it and replace the cap. The logger is now ready to be started and deployed.



DOWNLOADING THE RESULTS

At the end of the trip, you can download the data, so it can be viewed, analyzed and shared with others. With LogTag Analyzer running, just plug the logger into a USB port or slot it into the interface cradle. The data is now automatically downloaded and stored on your PC in the Documents – My LogTag Data folder. If the auto-download function is disabled, you can also click Download from the LogTag menu or press F4.

DATA ANALYSIS

Immediately after the data is downloaded, you are presented with a chart that shows the complete trip including:

- Temperature (and where applicable humidity) values
- Color-coded alarm bands, so you can see if readings went outside specifications
- Time and temperature axes
- The chart control panel

You can use your mouse to zoom into any area in more detail by dragging the mouse cursor across the chart canvas (while holding the left mouse button down). Use the toolbar icons or the mouse wheel to zoom out. Readings Range lets you select if you want to see all readings, just the started readings, or just the pre-start readings. The chart control panel allows you to turn specific elements of the chart on or off. Aside from the initial Chart tab, you can also see other tabs at the bottom of the file window. These tabs present the loggers' data in different ways. Click one of the tabs to show the following information:

Report tab: This tab shows a summary report of the trip, combining the most important statistical data of the trip with a small chart.

Data tab: In this tab, you will find a list of all temperature readings currently visible presented in the chart, which can be all readings or only those that are zoomed.

Summary tab: In this tab data is presented in summary form, grouped by events such as inspection marks. You can also see a section for only the zoomed readings. Statistics include calculated values such as minimum, maximum and average values, standard deviation, mean kinetic temperature, and degree minutes.

Day Summary tab: This tab contains a day summary from loggers with statistics memory, such as the vaxtag® or TRED30-16R loggers, where each of the last 30 days is listed with minimum and maximum values. It is also possible to combine data from several loggers into a single multi-chart file for comparison. You can use this for mapping studies, or to compare the data from recurring trips. LogTag Analyzer allows you to annotate charts. Enable this feature using the button in the chart control panel, then add text, callouts and other data to your chart canvas, such as statistical data.

EXPORTING AND SHARING DATA

Data can be saved in different formats and shared with other users. You can export the data to CSV files (which can be opened by Excel), text files, HTML files and PDF files. This can be done automatically when a logger is downloaded or using Save as from the File menu. Each of these file types can be customized. You can send files manually via email to a list of recipients, or upload them to an FTP server for others to download. Use the toolbar icons (Send Mail and Upload) or the corresponding commands from the File menu. This can also be done automatically each time a logger is downloaded. LogTag Analyzer also allows files to be uploaded directly to your LogTag Online account. LogTag Online is LogTag's cloud-based storage and reporting platform, which allows access to data from wherever a browser and internet connection are available. You will need to provide your account details and enable this feature in the settings. If enabled, you can additionally open files directly from LogTag Online using the Open command from the File menu.

CUSTOMIZING THE SOFTWARE

A large number of parameters that define the appearance and behavior of the software can be customized to your personal preferences. They are accessed by clicking the Options toolbar icon, or by clicking Options from the Edit menu, and then selecting one of the tabs. These preferences are stored separately for each user and can be exported and imported on other PCs. Following is a brief summary of these options.

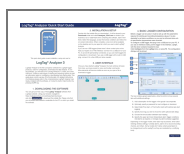
- **General Settings:** Select which language and temperature units the software is using, how often the software checks for available updates, and what default time interval to display in the chart.
- **Summary Statistics:** Select which statistics values should be shown in the statistic tab.
- **Chart Statistics:** Select which statistics values should be shown in, the chart annotation window.
- **Charts:** Influence how the chart appears, which markers to display, what colors to show, how the mouse works and what the chart will be called.
- **Automation:** Here, you determine how much of your download, reconfiguration and sharing process will be automated. In this section you also enter the details for your FTP and SMTP server details, so your logger data can be sent and uploaded.
- **File and Folder:** This section determines where the data that is downloaded from your loggers is stored, and what the files will be called.
- **Exports and Reports:** Here, you determine which export files are automatically generated when a logger is downloaded, and how each format is customized.
- **Date and Time:** Here you can set how dates and times are displayed in all tabs, reports and exports. This is also where you define which time zone is used by default to display the data.
- **LogTag Online:** This allows you to control some aspects of the automation relating to LogTag Online.

GETTING HELP

If at any stage you feel the user guide and help don't answer your questions, and you need further help, please contact your sales partner or visit the LogTag support website at

- <https://logtagrecorders.zendesk.com/hc/en-us> for assistance.

Documents / Resources



[LogTag Analyzer 3 Software](#) [pdf] User Guide
Analyzer 3 Software, Analyzer 3, Software

References

-  [LogTag | Download](#)

Manuals+.