



# LogTag Analyzer 3 Data Loggers Software User Guide

[Home](#) » [LogTag](#) » LogTag Analyzer 3 Data Loggers Software User Guide 

## Contents

- 1 [LogTag Analyzer 3 Data Loggers Software User Guide](#)
- 2 [Specifications](#)
- 3 [Product Usage Instructions](#)
- 4 [DOWNLOADING THE SOFTWARE](#)
- 5 [INSTALLATION & SETUP](#)
- 6 [USER INTERFACE](#)
- 7 [BASIC LOGGER CONFIGURATION](#)
- 8 [ADDITIONAL CONFIGURATION PARAMETERS](#)
- 9 [DOWNLOADING THE RESULTS](#)
- 10 [Complete any advanced alarm-related settings](#)
- 11 [Control advanced logger settings](#)
- 12 [FAQ](#)
- 13 [Documents / Resources](#)
  - 13.1 [References](#)
- 14 [Related Posts](#)

# ***LogTag***<sup>®</sup>

LogTag Analyzer 3 Data Loggers Software User Guide



## Specifications

- Manufacturer: LogTag North America Inc
- Product: Analyzer
- Interface: USB
- Compatibility: Windows and Mac
- Storage: Documents – My LogTag Data folder

## Product Usage Instructions

### Installation & Setup

Follow the installation guide provided with the product to set up the software on your computer.

### User Interface

The user interface consists of general parameters at the top and tabs for additional settings at the bottom.

### Basic Logger Configuration

1. Add a description for the logger or the goods it accompanies.
2. Optionally, specify a password for next configure or download.
3. Select Date/Time start, or Push button start (with optional prestart logging).
4. Specify the recording duration and start delay.
5. Choose the time duration between each reading.
6. Specify upper and lower temperature alarm trigger conditions.

### Additional Configuration Parameters

Access advanced settings by clicking the corresponding tab to enhance the information received at the end of a trip.

### Downloading the Results

After the trip, plug the logger into a USB port or interface cradle to automatically download the data for analysis and sharing.

This quick start guide covers installation, setup, and use for LogTag® Analyzer 3

LogTag® Analyzer is the free companion software for LogTag® logger products, used for configuration, download and data analysis. To run the software, you will need a PC running Windows 7 or later, and a free USB port. It offers a wide range of charting and reporting options as well as automation tasks for configuring, downloading and sharing data. This guide gives a brief overview of its functionality; for detailed instructions of all features please refer to the comprehensive LogTag® Analyzer User Guide, installed with the software, or invoke the built-in help function by pressing the F1 key.

## DOWNLOADING THE SOFTWARE

You can get your free copy of the LogTag® Analyzer software from LogTag's website. Using your browser, navigate the <https://www.logtag-recorders.com/de/support/> and click Download Now to download the installer file. Please note that you will require administrator credentials for the PC on which you install the software.

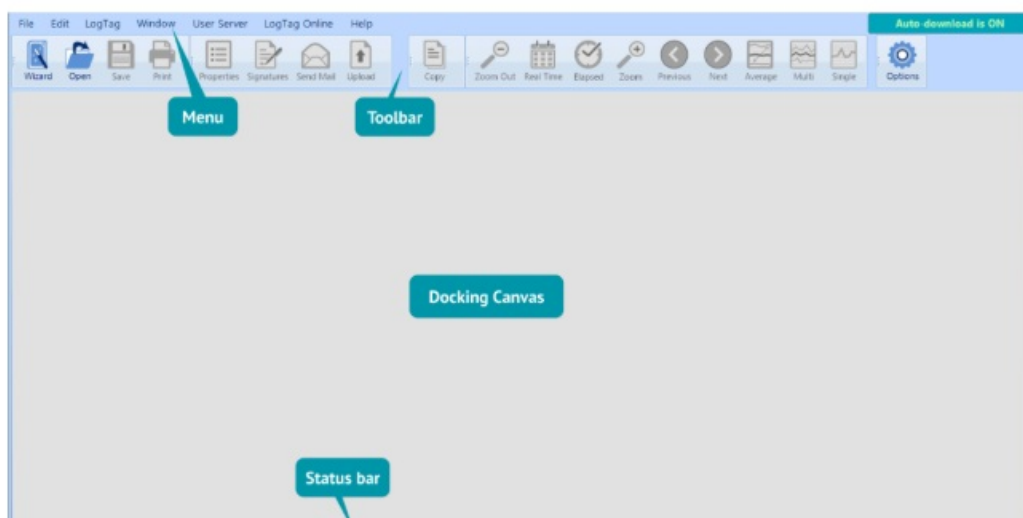
## INSTALLATION & SETUP

Double-click the installer file you downloaded – it will be stored in your Downloads folder and called ltanalyzer\_32r12.exe or similar. If you received a CD or USB Flash Drive containing the software, start it from there. Select the language, accept the license conditions and follow the on-screen instructions. When complete, a new icon will be available on the desktop and in your apps list, which you use to start LogTag® Analyzer. If you use non-USB loggers (these have 3 silver contact pins on the rear) you require an LTI-HID interface. Connect it to a USB port on your PC. It can be left permanently connected, so you can insert loggers for configuration or download. If you use a USB logger with a built-in USB plug, connect it to a free USB port when needed.

## USER INTERFACE

Once you have started LogTag® Analyzer, the main window will open. From here, you have access to menu and toolbar commands.

More elements will become visible as soon as you open a file or download a logger.



## BASIC LOGGER CONFIGURATION

Before a logger can be used, it must be set up with the parameters required for starting and recording temperature values. It is also desirable to set alarm conditions, so you can be informed when out-of-specification temperatures

were recorded.

To configure a USB logger, first plug it into a USB port on your PC. If you use an interface cradle, put the logger in the interface, upright, with the silver contacts towards the rear.

Click Configure from the LogTag menu, or press F3. The configuration dialogue will be shown:

The screenshot shows the 'Configure LogTag(s) UTRID-16' dialog box. At the top right, it says 'Settings from SN:6045019060' and 'Certificate of Calibration'. A 'LogTag Battery: OK' status is shown in green. The dialog is divided into sections: 'User Information' with a 'Description' field (callout 1) and a 'Password' field (callout 2) with checkboxes for 'Configure requires a password' and 'Download requires a password'. The 'Logging Parameters' section (callout 3) has a 'Push button start' dropdown and an 'Enable pre-start logging' checkbox. Below this, there are radio buttons for 'Record readings continuously, overwrite oldest when memory full' and 'Record readings so that:' (callout 4). The latter is selected and includes settings for 'Readings recorded will span at least' (67 Days), 'Number of readings to record' (16129, maximum is 16129), 'Record a reading every' (6 Minutes) (callout 5), and 'Begin recording after a delay of' (12 Minutes). The bottom section (callout 6) contains temperature alarm settings with checkboxes for upper and lower limits, current values (8.0 °C and 0.5 °C), and triggers (After 10 Consecutive and After 2 Accumulative violation readings). At the bottom, there are tabs for 'Alarm Settings', 'File Settings', and 'Advanced Settings', and buttons for 'Configure', 'Save Profile', 'Cancel', and 'Help'.

The top contains general parameters, while the bottom shows several tabs with additional settings.

1. Add a description for the logger or the goods it accompanies
2. Optionally, specify a password for next configure or download.
3. Select Date/Time start, or Push button start (with optional pre-start logging).
4. Specify how long you wish to record for (with optional start delay).
5. Choose the time duration between each reading.
6. Specify the upper and lower temperature alarm trigger conditions. Add alarms as required, or change any alarms already suggested.

Depending on the logger model, other tabs may be present, which allow entering wireless settings, humidity alarms, alarms for a second recording channel, and others. Some models don't allow certain parameters to be changed (such as the vaxtag®), as they are

7

☒ Generate data list  
☒ Show upper alarm line  
☒ Show lower alarm line  
☒ Show Y axis grid lines  
☒ Show X axis grid lines  
☐ Show MKT 83.1440 KJ/mol

Date Format: ☒ DD/MM/YY ☐ MM/DD/YY  
 Time Format: ☐ 12-hour (am/pm) ☒ 24-hour  
 PDF temperature unit: Celsius  
 PDF Time Zone: UTC +12:00  
☒ Use local PC time zone (UTC +12:00)  
 PDF Language: English

Scale Y Axis: ☒ Range of readings ☐ Range of sensor ☐ Minimum range  
 Upper Limit: 1.0  
 Lower Limit: 0.0

Files to generate: ☒ PDF ☒ LTD ☒ CSV

File Settings

8

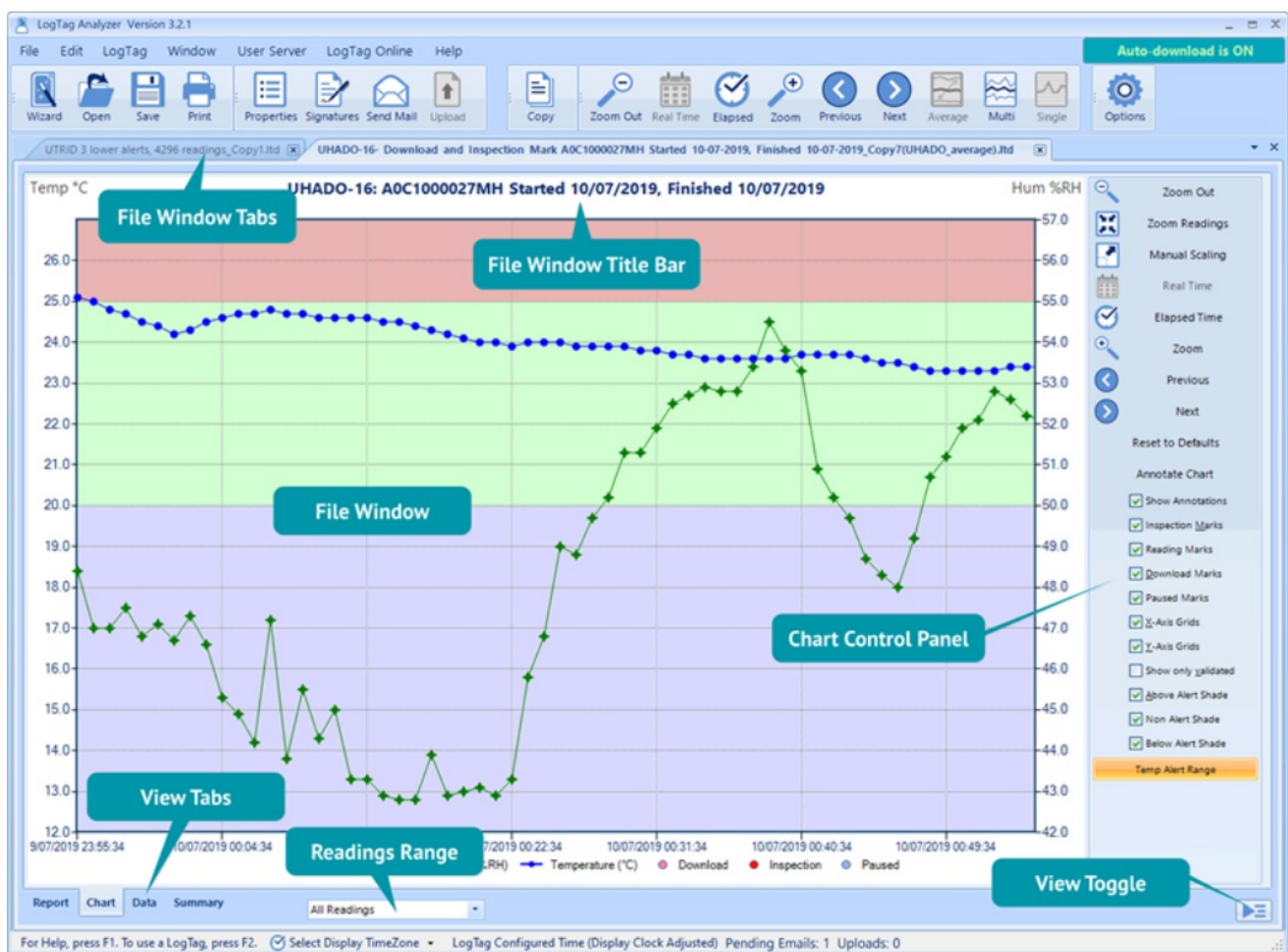
Advanced alarm options

☒ Alarm remains on even if readings return to non-violation range  
☐ Clear and reset all alarms when START/MARK button pressed  
☐ Pause alarm/statistics processing for 0 readings when button pressed (None)  
☒ Show alarm screens during review

Advanced logger options

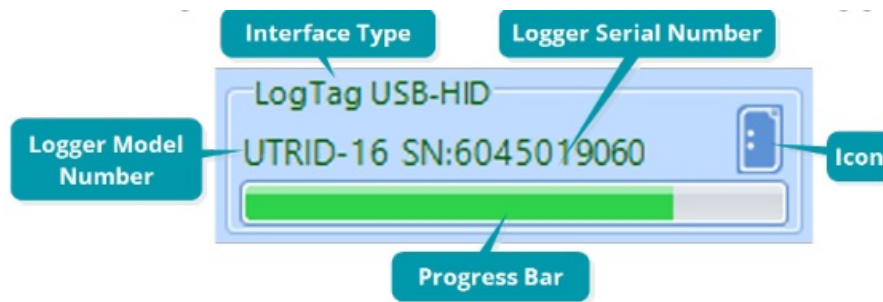
☐ Switch off display after 30 seconds (Power save)  
☒ Allow logging stop with STOP button  
☐ Allow reset of logger with START button  
☒ Enable Quick start/stop mode (if supported)

Advanced Settings



## ADDITIONAL CONFIGURATION PARAMETERS

While the basic configuration is sufficient to prepare a logger for



logging, you can enhance the information you receive at the end of a trip by setting some additional parameters. These are accessed by clicking the corresponding tab.

### File Settings Tab

This tab is only available for USB loggers and determines the composition of the PDF file.

When you have entered all parameters, click Configure. The logger will now be configured with the parameters you entered. A progress bar will let you know when the configuration is finished. Remove the logger from the interface, or if it is a USB logger, unplug it and replace the cap. The logger is now ready to be started and deployed.

## DOWNLOADING THE RESULTS

At the end of the trip, you can download the data, so it can be viewed, analyzed and shared with others. With LogTag Analyzer running, just plug the logger into a USB port or slot it into the interface cradle. The data is now automatically downloaded and stored on your PC in the Documents – My LogTag Data folder. If the auto-download function is disabled, you can also click Download from the LogTag menu or press F4.

Select each element you wish to display on the PDF:

- Enable or disable data list, alarm and grid lines
- Determine date and time formats
- Select, which on-board files should be generated
- Choose PDF temperature units, language and time zone
- Select the scaling of the chart

### Advanced Settings Tab

This tab is available for loggers with a display and controls how the logger's buttons are used to control the alarms and other advanced options.

### Complete any advanced alarm-related settings

- Define if an alarm remains shown on the display even if temperatures return to normal, and if an alarm can be cleared
- Set the number of paused readings when a button is pressed

## Control advanced logger settings

- Allow stopping and resetting the logger
- Enable the power save option

## FAQ

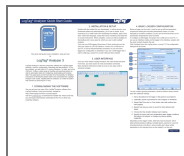
### Q: How do I know when the configuration is finished?

A: A progress bar will indicate when the configuration process is complete.

### Q: Where is the data stored after downloading?

A: The data is stored in the Documents – My LogTag Data folder on your PC.

## Documents / Resources



### [LogTag Analyzer 3 Data Loggers Software](#) [pdf] User Guide

Analyzer 3 Data Loggers Software, Analyzer 3, Data Loggers Software, Loggers Software, Software

## References

- [User Manual](#)

[Manuals+](#), [Privacy Policy](#)

This website is an independent publication and is neither affiliated with nor endorsed by any of the trademark owners. The "Bluetooth®" word mark and logos are registered trademarks owned by Bluetooth SIG, Inc. The "Wi-Fi®" word mark and logos are registered trademarks owned by the Wi-Fi Alliance. Any use of these marks on this website does not imply any affiliation with or endorsement.