

logitech ZONE 300 Replaceable Earpads



## logitech ZONE 300 Replaceable Earpads User Guide

[Home](#) » [Logitech](#) » logitech ZONE 300 Replaceable Earpads User Guide 

### Contents

- 1 logitech ZONE 300 Replaceable Earpads
- 2 Product Information
- 3 FAQ
- 4 WHAT'S IN THE BOX
- 5 DIMENSIONS
- 6 Documents / Resources
  - 6.1 References

**logitech**<sup>®</sup>

logitech ZONE 300 Replaceable Earpads



## Product Information

### Specifications:

- **Height:** 66 mm (2.6 in)
- **Width:** 66 mm (2.6 in)
- **Depth:** 16 mm (0.63 in)

### Compatibility:

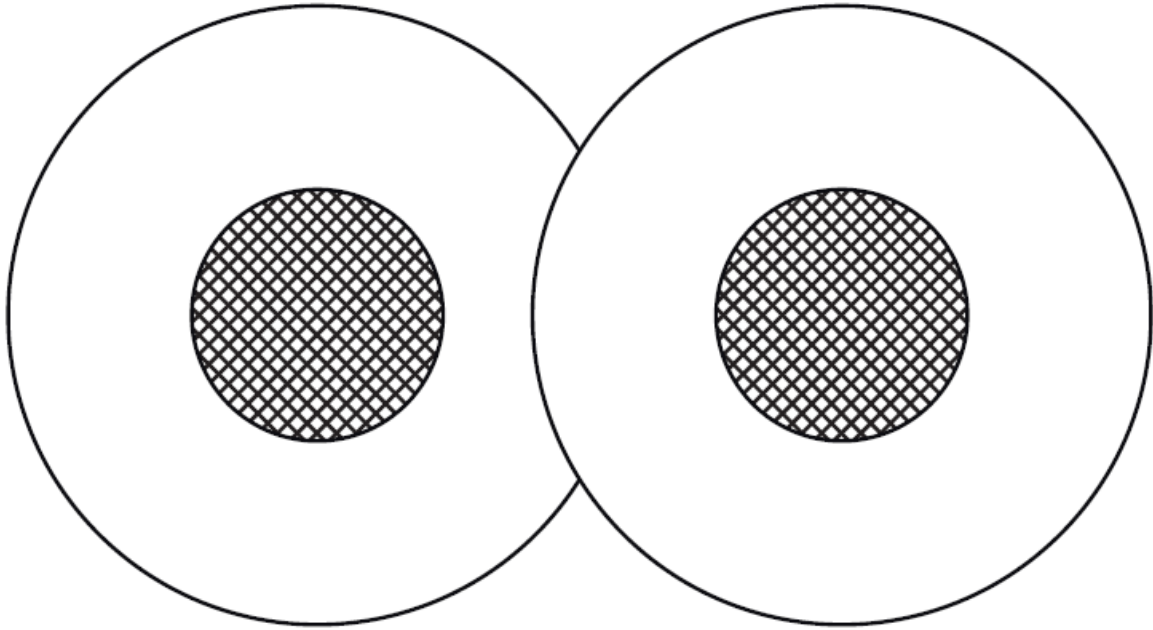
The replaceable earpads are compatible with the following models:

- Zone 300
- Zone 301
- Zone 305

## FAQ

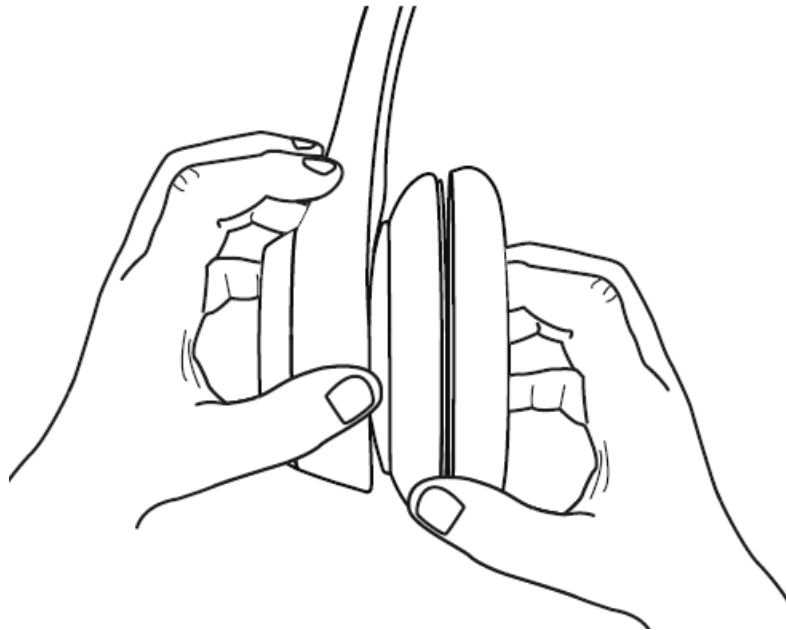
- **Q:** Are the replacement earpad covers washable?
  - **A:** The replacement earpad covers are not designed to be washed. We recommend spot cleaning with a damp cloth if needed.
- **Q:** Can I use these replacement earpads with other headset models?
  - **A:** These replacement earpads are specifically designed for use with Zone 300, Zone 301, and Zone 305 models. We do not recommend using them with other headset models.
- **Q:** How often should I replace the earpad covers?
  - **A:** The frequency of replacing the earpad covers depends on individual usage and wear. We recommend checking the condition of the earpad covers regularly and replacing them when they show signs of wear or deterioration.

## WHAT'S IN THE BOX

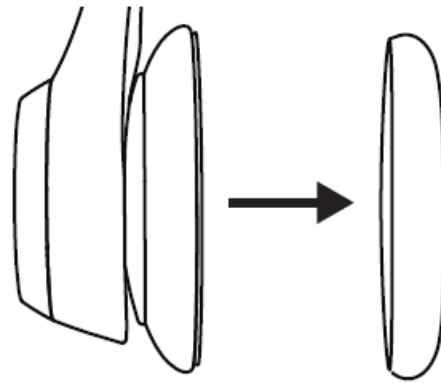
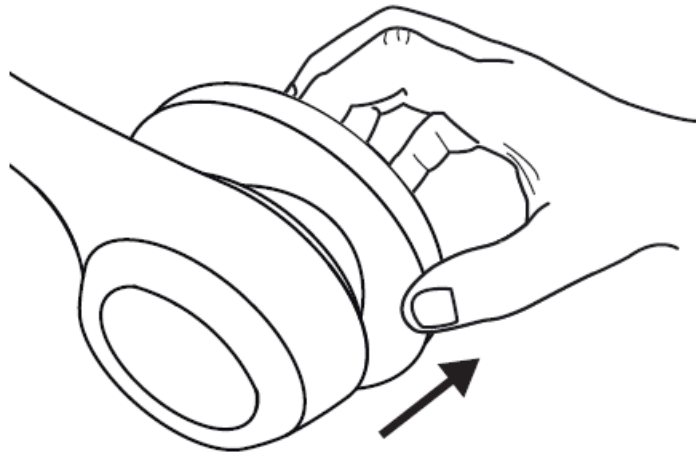


- 1 pair (2 pcs) of replacement earpad covers

## REMOVE THE EARPAD

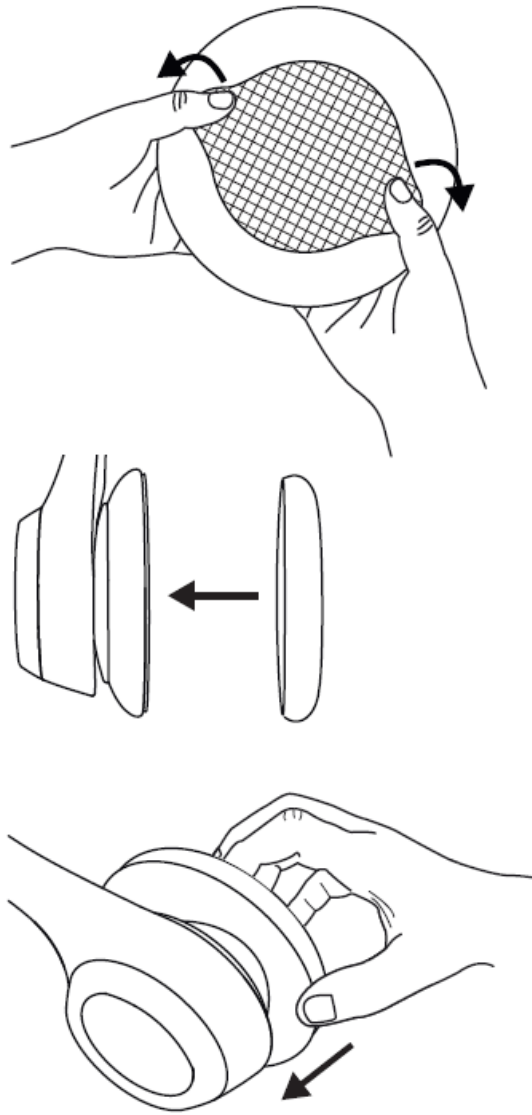


- Firmly grasp the earpad with one hand and hold the headset with the other hand.

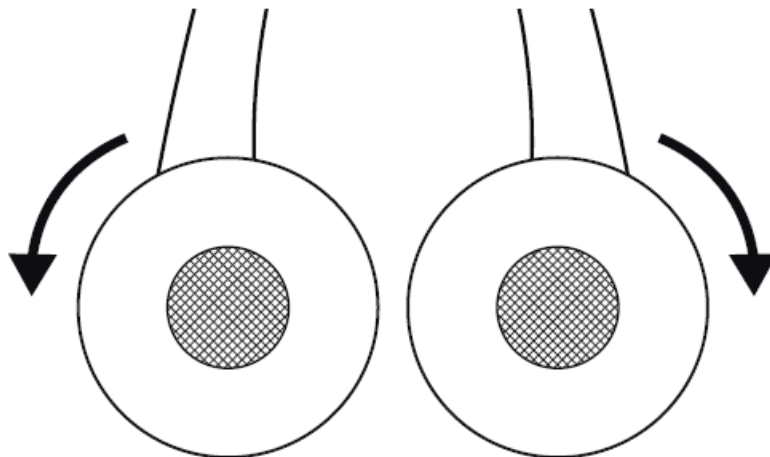


- Pull the earpad gently out from the earcup.

#### **PUT ON THE NEW EARPAD**



1. Stretch the inside flap of the earpads, and slowly tuck it around the earcup.



2. Rotate and adjust the earpads until they are nicely fit and attached to the earcup.

## DIMENSIONS

- **Height:** 66 mm (2.6 in)
- **Width:** 66 mm (2.6 in)
- **Depth:** 16 mm (0.63 in)

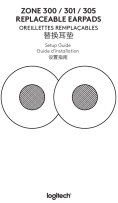
COMPATIBILITY

- Zone 300
- Zone 301
- Zone 305

[www.logitech.com/support/zone300](http://www.logitech.com/support/zone300)  
[www.logitech.com/support/zone301](http://www.logitech.com/support/zone301)  
[www.logitech.com/prosupport/zone305](http://www.logitech.com/prosupport/zone305)

© 2024 Logitech. Logitech, Logi, Zone, and the Logitech logo are trademarks or registered trademarks of Logitech Europe S.A. and/or its aliates in the U.S. and other countries. All other trademarks are the property of their respective owners. Logitech assumes no responsibility for any errors that may appear in this manual. Information contained herein is subject to change without notice.

Documents / Resources

	<p><a href="#">logitech ZONE 300 Replaceable Earpads</a> [pdf] User Guide</p> <p>ZONE 300 Replaceable Earpads, ZONE 300, Replaceable Earpads, Earpads</p>
--	---

References

- [User Manual](#)

[Manuals+.](#) [Privacy Policy](#)

This website is an independent publication and is neither affiliated with nor endorsed by any of the trademark owners. The "Bluetooth®" word mark and logos are registered trademarks owned by Bluetooth SIG, Inc. The "Wi-Fi®" word mark and logos are registered trademarks owned by the Wi-Fi Alliance. Any use of these marks on this website does not imply any affiliation with or endorsement.