



logitech Z533 Speaker System User Guide

[Home](#) » [Logitech](#) » logitech Z533 Speaker System User Guide 

logitech[®]

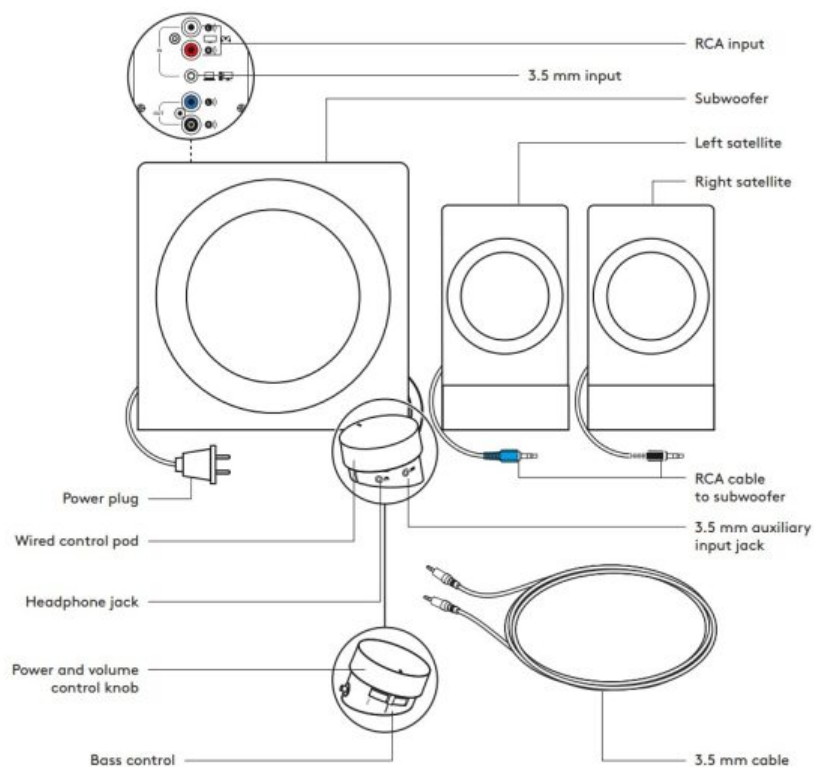
**Z533 SPEAKER SYSTEM WITH
SUBWOOFER**
Complete Setup Guide



Contents

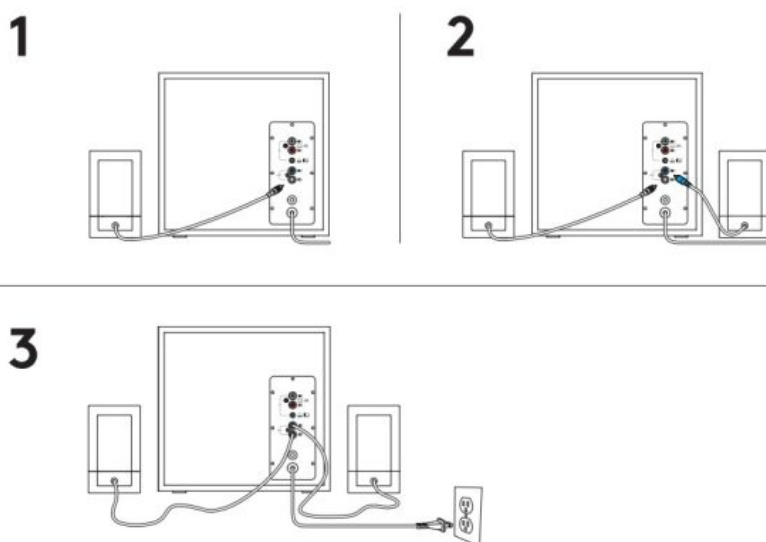
- [1 KNOW YOUR PRODUCT](#)
- [2 CONNECT THE SPEAKERS](#)
- [3 CONNECT TO AUDIO SOURCE](#)
- [4 CONNECT TO TWO DEVICES
SIMULTANEOUSLY](#)
- [5 Documents / Resources](#)
 - [5.1 References](#)

KNOW YOUR PRODUCT



CONNECT THE SPEAKERS

1. Plug the black RCA connector on the right satellite into the black subwoofer jack
2. Plug the blue RCA connector on the left satellite into the blue subwoofer jack
3. Plug the power plug into an electrical outlet



CONNECT TO AUDIO SOURCE

1. A For 3 5 mm connection:

Connect one end of the provided 3 5 mm cable to the corresponding jack on the back of subwoofer or the 3 5 mm jack on the control pod Insert the other end of the 3 5 mm cable into the audio jack on your device (computer, smartphone, tablet, etc)

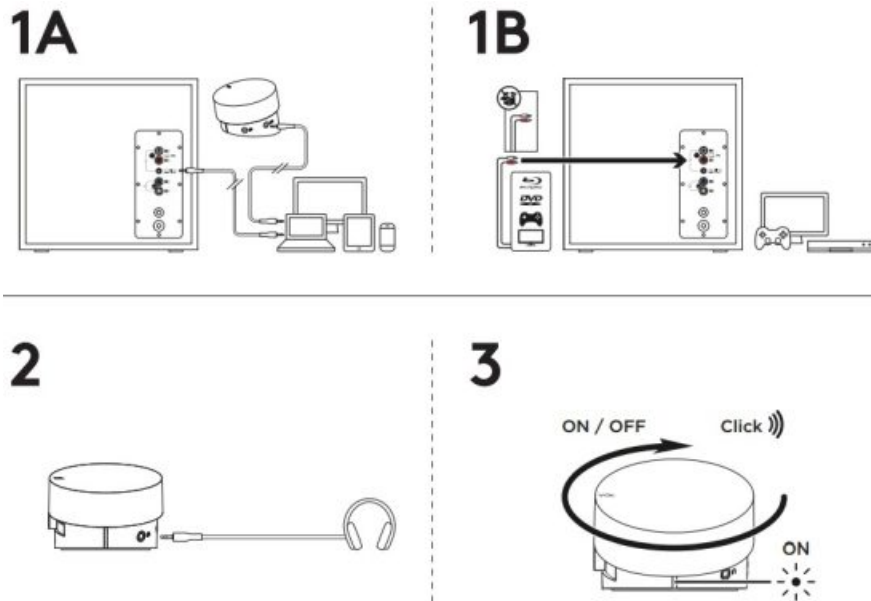
- 1B For RCA connection:

Connect one end of the RCA cable to the corresponding RCA jack on the back of subwoofer Insert the other

end of the RCA cable into the RCA outlet on your device (TV, gaming console, etc)

Note: The RCA cable is not included in the box and must be purchased separately

2. Plug your headphones into the headphone jack on the control pod Adjust the volume either from the control pod or the audio source
3. Power speakers on/off by turning clockwise the volume knob on the control pod You will notice a “click” sound once the system is ON (the LED in front of the wired remote will also turn on)



CONNECT TO TWO DEVICES SIMULTANEOUSLY

1. Connect to two devices at the same time through the RCA connector and 3.5 mm input on the back of subwoofer
2. To switch between audio sources, just pause audio on one connected device and play audio from the other connected device



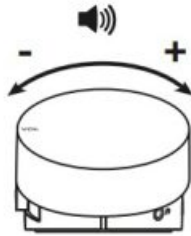
ADJUST THE VOLUME

1. Adjust the volume of Z533 with the knob on the control pod Turn the knob clockwise (to the right) to increase volume Turn the knob counter-clockwise (to the left) to decrease volume

ADJUST THE BASS

2. Adjust the bass level by moving the bass slider on the side of the control pod

1



2



© 2019 Logitech Logitech, Logi and other Logitech marks are owned by Logitech and may be registered All other trademarks are the property of their respective owners Logitech assumes no responsibility for any errors that may appear in this manual Information contained herein is subject to change without notice

logitech®

www.logitech.com/support/Z533

Downloaded from thelostmanual.org

Documents / Resources

	<p>logitech Z533 Speaker System [pdf] User Guide Z533 Speaker System, Z533, Speaker System, System</p>
--	--

References

- [One moment, please...](#)
- [Logitech Support + Download](#)
- [User Manual](#)

Manuals+ Privacy Policy

This website is an independent publication and is neither affiliated with nor endorsed by any of the trademark owners. The "Bluetooth®" word mark and logos are registered trademarks owned by Bluetooth SIG, Inc. The "Wi-Fi®" word mark and logos are registered trademarks owned by the Wi-Fi Alliance. Any use of these marks on this website does not imply any affiliation with or endorsement.