



# Logitech z533 Multimedia Speaker system User Guide

[Home](#) » [Logitech](#) » Logitech z533 Multimedia Speaker system User Guide 

## Logitech z533 Multimedia Speaker system User Guide

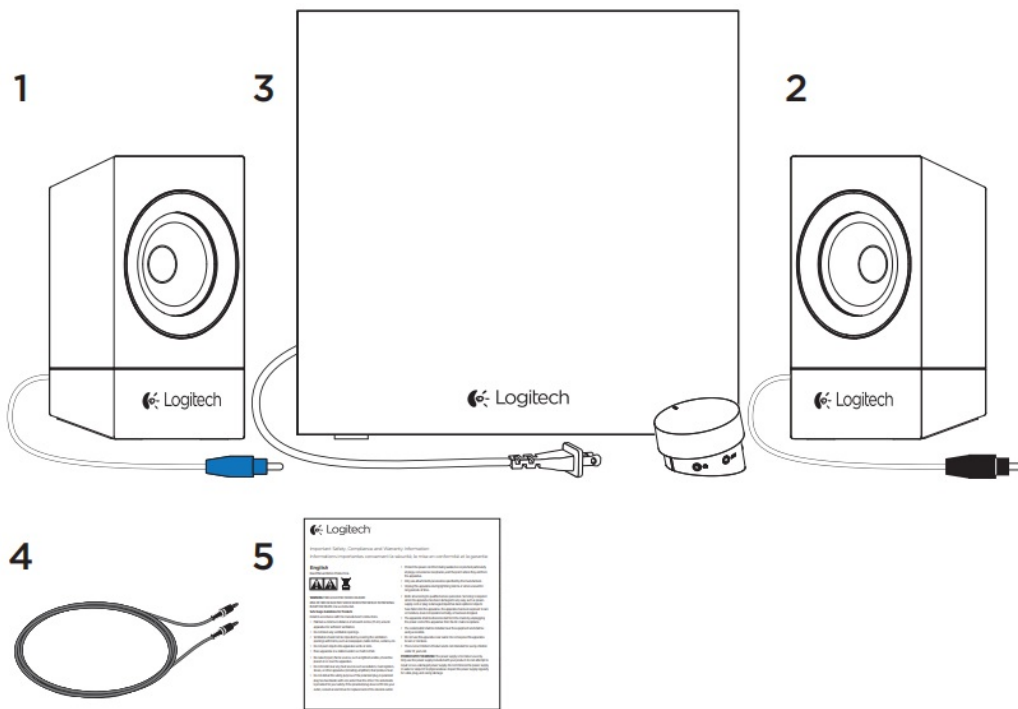


### Contents

- [1 What's in the box](#)
- [2 Set-up](#)
- [3 Features](#)
- [4 Documents / Resources](#)
  - [4.1 References](#)
- [5 Related Posts](#)



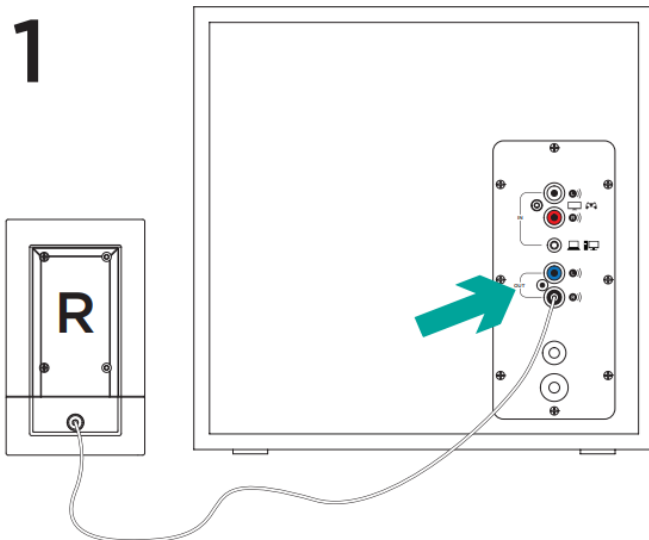
**What's in the box**



1. Left Satellite
2. Right satellite
3. Subwoofer (including wired control pod)
4. 3.5 mm to 3.5mm cable
5. User documentation

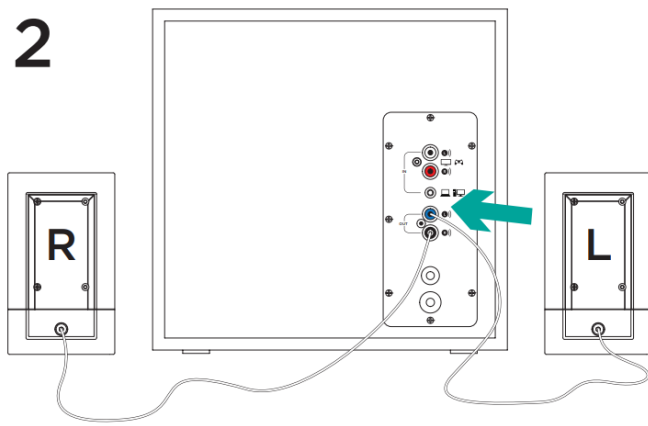
## Set-up

1. Plug the right satellite cable into the black subwoofer jack.



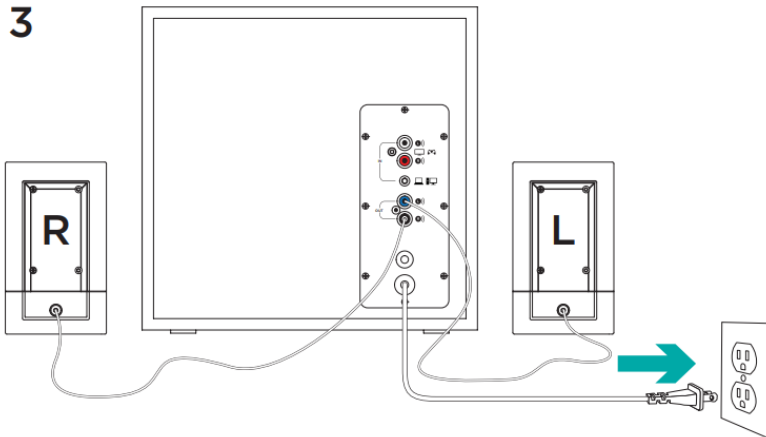
2. Plug the left satellite cable into the blue subwoofer jack.

2



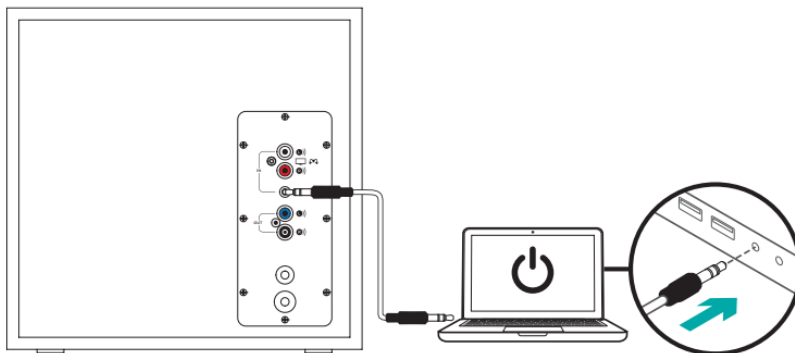
3. Plug the power cord into an electrical outlet.

3



4. **A.** If you have a 3.5mm outlet on your device:

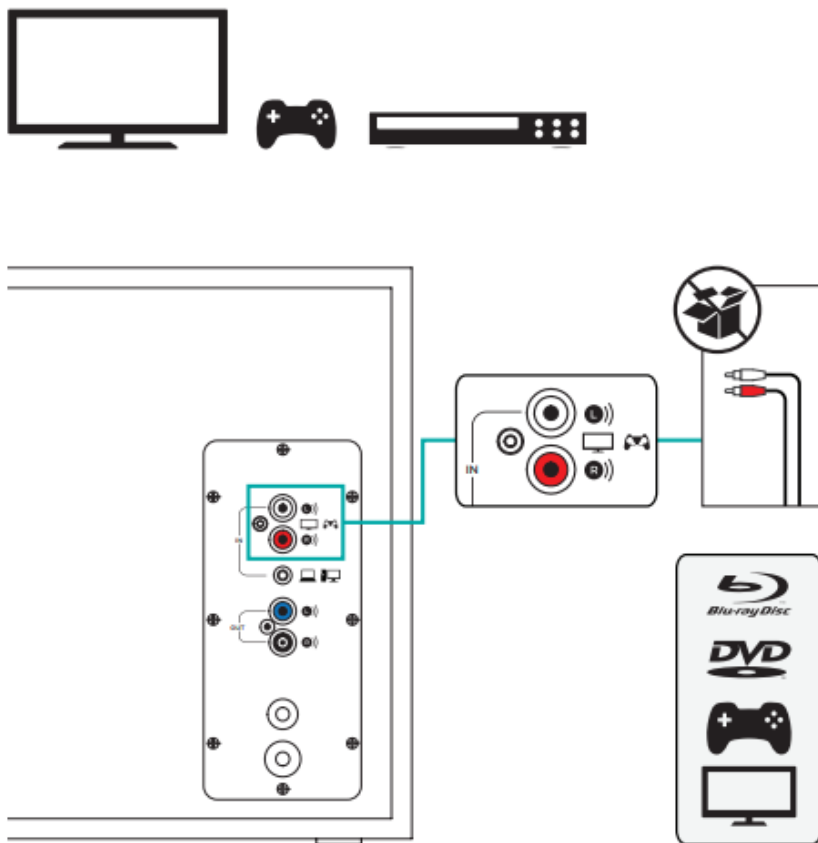
- Insert the 3.5mm to 3.5mm cable plug from the subwoofer into the audio jack on your device



**B.** If you have a RCA outlet on your device:

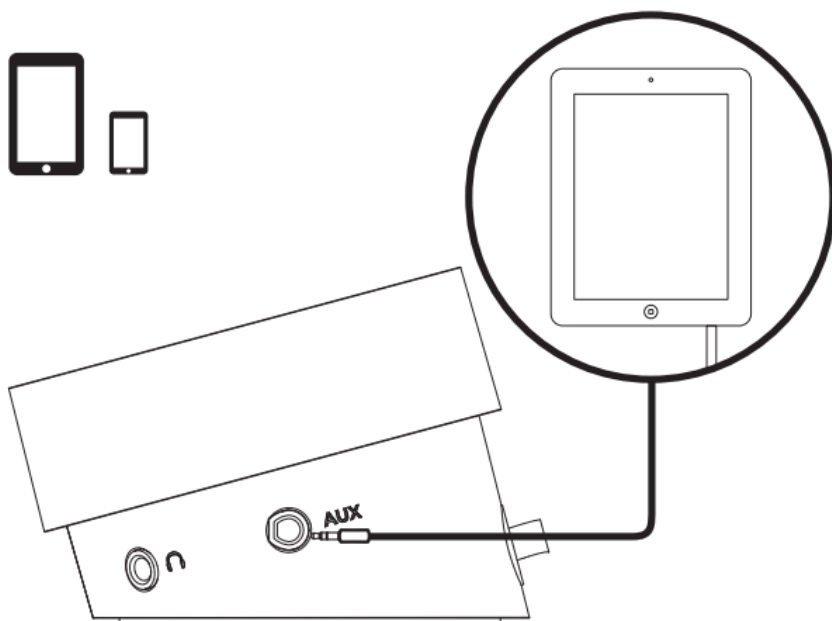
- – Insert the RCA cable on the subwoofer (the RCA cable is not included in the box and must be purchased separately)
- – Insert the other end of the RCA cable into the RCA outlet on your device (TV, Gaming Console, etc)

## 4B

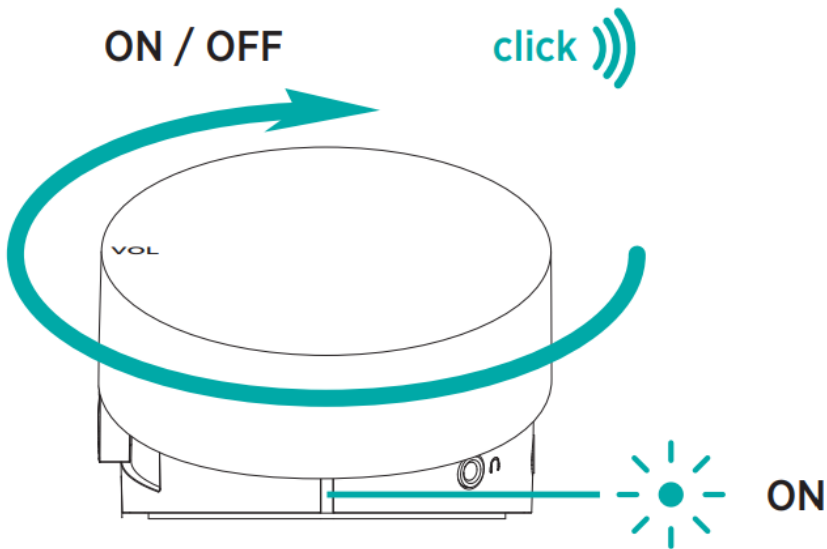


C. If you have a 3.5mm outlet on your device:

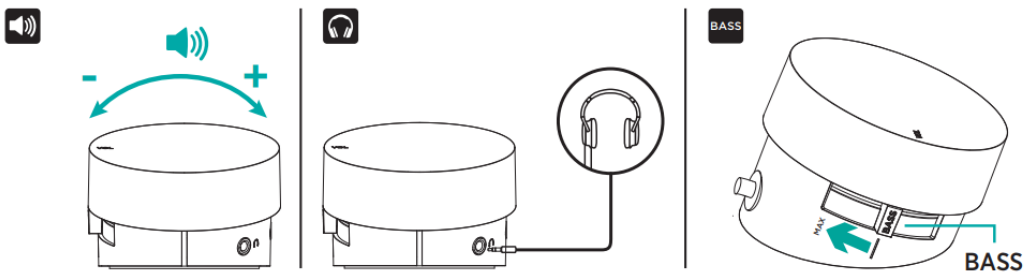
## 4C



- Insert the 3.5mm to 3.5mm cable plug from the wired remote into the 3.5mm outlet on your device
5. Switch ON your Multimedia Speaker System z533 by turning clockwise the volume knob located on top of the wired remote. You will notice a “click” sound once the system is ON (the LED in front of the wired remote will also turn on)



## Features



### ADJUSTING SPEAKER VOLUME

Adjust your Multimedia Speaker System z533 volume with the wheel located on top of the wired remote (VOLUME UP – turn the wheel clockwise for volume up. VOLUME DOWN – turn wheel counter-clockwise for volume down).



### USING HEADPHONES

Most types of analog headphones with a 3.5mm connector can be plugged into the headphone jack on the right of the wired remote.




### BASS ADJUSTING BASS VOLUME



To adjust the bass level of your Multimedia Speaker System z533, move the bass slider located on the left of the wired remote

- Move the slider clockwise to increase bass
- Move the slider counter-clockwise to reduce the bass

## Documents / Resources

 <p>Logitech Setting started with Personal utilization Logitech® z533 Multimedia Speaker System</p>	<p><a href="#">Logitech z533 Multimedia Speaker system</a> [pdf] User Guide</p> <p>z533 Multimedia Speaker system, z533, Multimedia Speaker system, Speaker system, system</p>
--	--

## References

-  [Manual-Hub.com - Free PDF manuals!](#)
-  [Logitech Support + Download](#)
-  [Manual-Hub.com - Free PDF manuals!](#)
- [User Manual](#)

### Manuals+. [Privacy Policy](#)

This website is an independent publication and is neither affiliated with nor endorsed by any of the trademark owners. The "Bluetooth®" word mark and logos are registered trademarks owned by Bluetooth SIG, Inc. The "Wi-Fi®" word mark and logos are registered trademarks owned by the Wi-Fi Alliance. Any use of these marks on this website does not imply any affiliation with or endorsement.