

Contents [[hide](#)]

- [1 Logitech YR0104 Mechanical Keyboard](#)
- [2 Product Specifications](#)
- [3 Product Usage Instructions](#)
- [4 CONEACTEING](#)
- [5 WHAT IS IN THE BOX](#)
- [6 Frequently Asked Questions \(FAQ\)](#)
- [7 Documents / Resources](#)
 - [7.1 References](#)



Logitech YR0104 Mechanical Keyboard



Product Specifications

- **Product Name:** Bluetooth Alto Keys K98M
- **Model Number:** Alto Keys K98M
- **Compatibility:** Mac, Windows
- Bluetooth Connectivity

- EASY-SWITCH feature for seamless switching between devices
- **Dimensions:** Print size 570mm x 324.5mm, Trim size 570mm x 324.5mm
- **Inks:** Soy or vegetable inks
- **Fonts:** Brown Logitech Pan Family

Product Usage Instructions

Connecting the Keyboard

To connect the Bluetooth Alto Keys K98M to your device:

1. Turn on the keyboard by sliding the power switch to the ON position.
2. Open the Bluetooth settings on your device.
3. Select the Alto Keys K98M from the list of available devices to pair.

Using the EASY-SWITCH Feature

The EASY-SWITCH feature allows you to switch between multiple connected devices easily:

1. Press and hold the Fn key for 3 seconds.
2. Press the corresponding number key (1, 2, etc.) assigned to each device.

Logi Options+ App

You can enhance your keyboard experience by downloading and using the Logi Options+ App:

1. Visit app.logi.com to download the Logi Options+ App.
2. Install and open the app on your device to customize keyboard settings.

Support and Additional Information

For further support or information, visit logitech.com/support/AltoKeysK98M

- **Project**

Fujian Alto Keys K98M (QSG Insert)

- **Date**

26 June 2024

- **File Name**

PDK-650-048919 00A Fujian Alto Keys K98M QSG Insert LOC.ai

- **P/N**

650-048919 Rev.00A

- **Print size**

570mm x 324.5mm

- **Trim size**

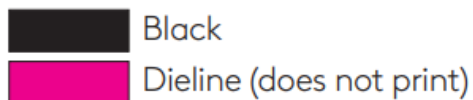
570mm x 324.5mm

- **Fonts**

Brown Logitech Pan Family

USE SOY OR VEGETABLE

INKS

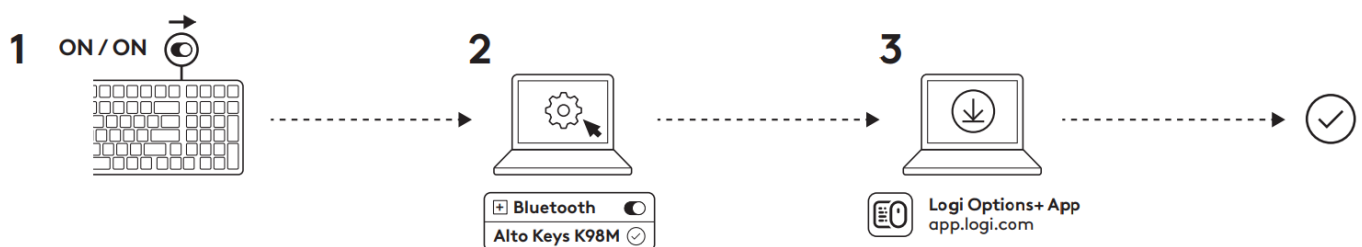


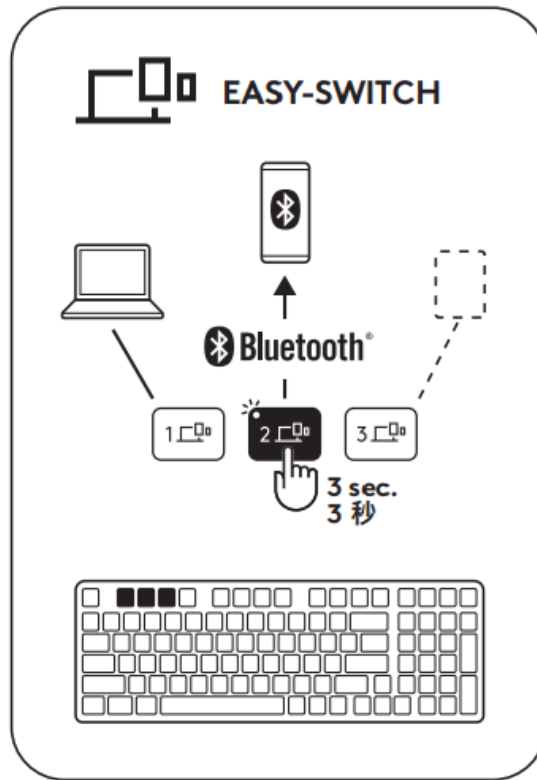
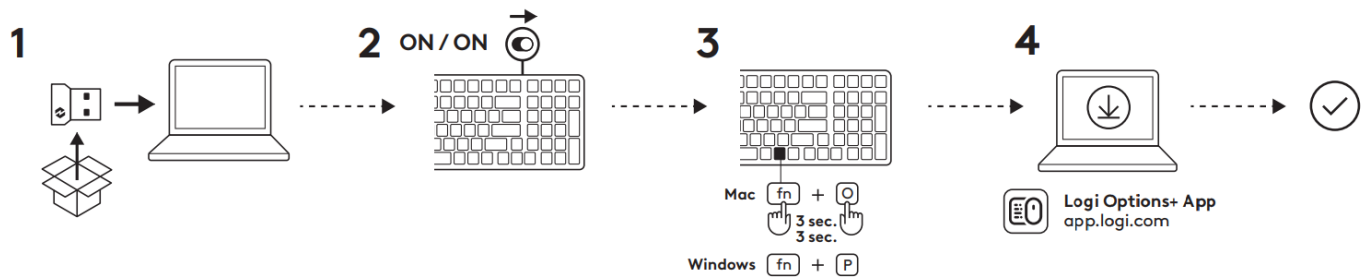
Dieline

DWS-650-048919_FUJIAN-INSERT



CONNECTING





? logitech.com/support/AltoKeysK98M

logitech.com/support/AltoKeysK98M



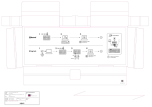
650-048919 00A

Frequently Asked Questions (FAQ)

- **Q: How do I switch between devices using the EASY-SWITCH feature?**
 - **A:** Press and hold the Fn key for 3 seconds, then press the number key corresponding to the desired device.

- **Q: Can I customize keyboard settings with the Logi Options+ App?**
 - **A:** Yes, you can download the app from app.logi.com and personalize your keyboard experience.

Documents / Resources

	logitech YR0104 Mechanical Keyboard [pdf] User Manual JNZYR0104, yr0104, YR0104 Mechanical Keyboard, YR0104, Mechanical I Keyboard, Keyboard
---	---

References

- [User Manual](#)

JNZYR0104, Keyboard, Logitech, Mechanical keyboard, yr0104, YR0104 Mechanical

Logitech Keyboard

Leave a comment

Your email address will not be published. Required fields are marked *

Comment *

Name

Email

Website

☐ Save my name, email, and website in this browser for the next time I comment.

Post Comment

Search:

e.g. whirlpool wrf535swhz

Search

[Manuals+](#) | [Upload](#) | [Deep Search](#) | [Privacy Policy](#) | [@manuals.plus](#) | [YouTube](#)

This website is an independent publication and is neither affiliated with nor endorsed by any of the trademark owners. The "Bluetooth®" word mark and logos are registered trademarks owned by Bluetooth SIG, Inc. The "Wi-Fi®" word mark and logos are registered trademarks owned by the Wi-Fi Alliance. Any use of these marks on this website does not imply any affiliation with or endorsement.