



logitech Wireless Mouse M310 User Guide

[Home](#) » [Logitech](#) » logitech Wireless Mouse M310 User Guide 



Getting started with
Logitech® Wireless Mouse M310

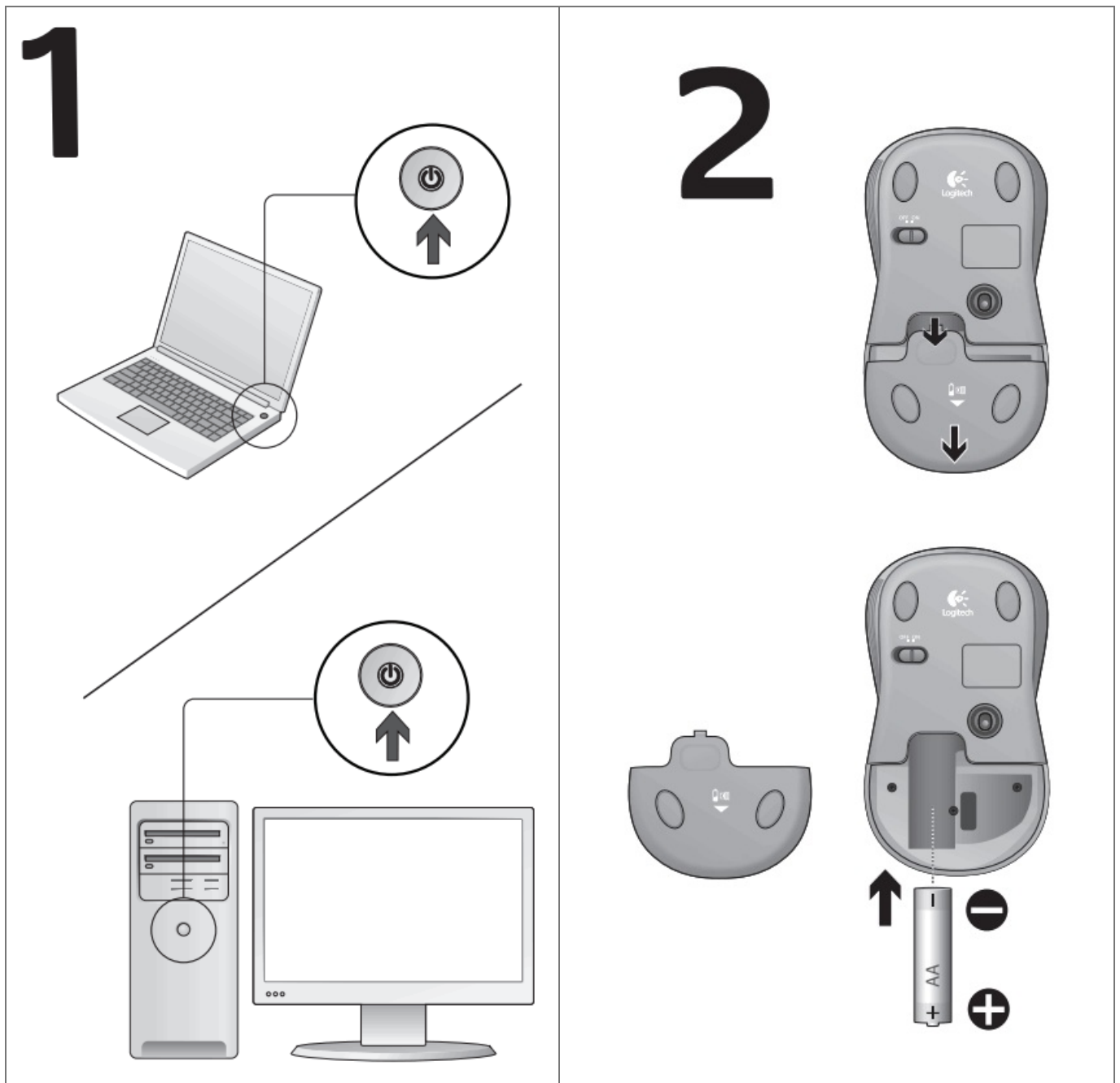
Contents

- 1 [Wireless Mouse M310](#)
- 2 [Turn on computer.](#)
- 3 [Help with setup](#)
- 4 [Documents / Resources](#)
 - 4.1 [References](#)
- 5 [Related Posts](#)

Wireless Mouse M310

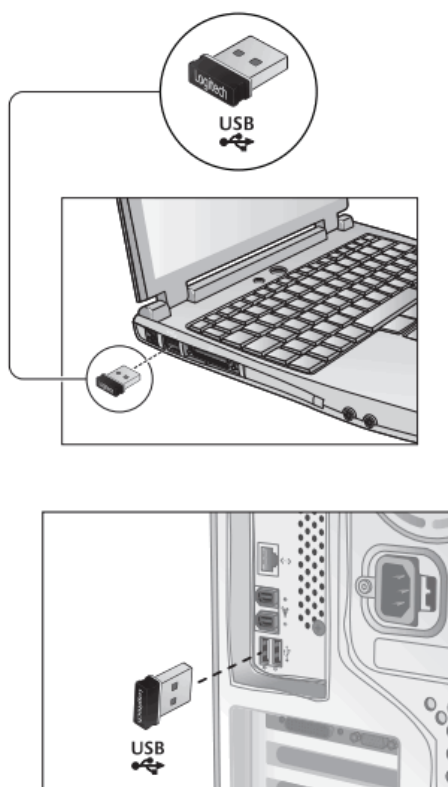


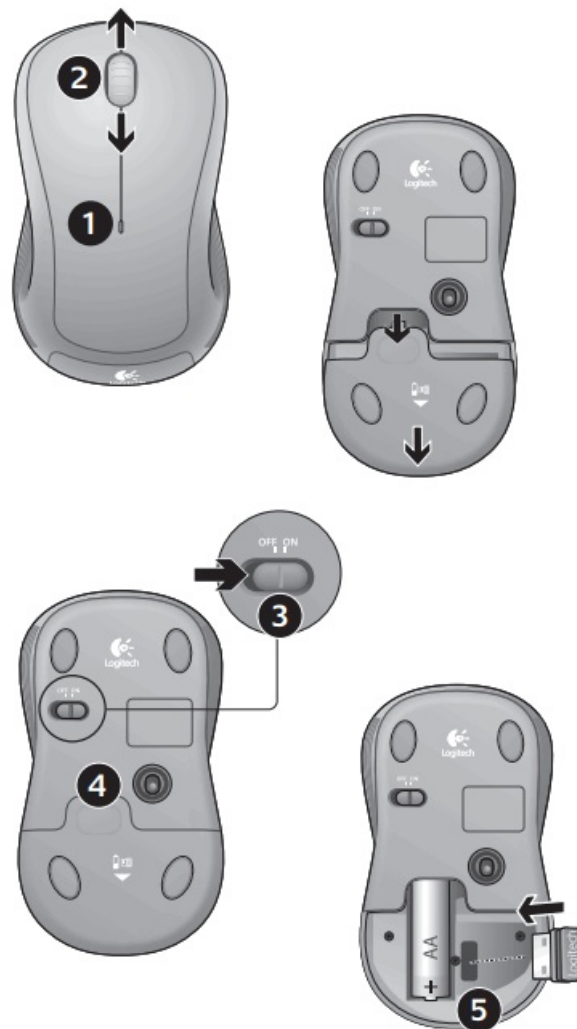
Turn on computer.



1. Install the AA mouse battery.
2. The ON/Off slider should be in the ON position.

3





Features

1. Battery LED flashes red when battery power is low
2. Vertical scrolling
3. On/Off slider
4. Press down and slide to release battery door
5. USB Nano receiver storage

Help with setup

No pointer movement or erratic movement

1. Is the power on?
2. Check the USB Nano receiver; change ports.
3. Check the battery.
4. Try a different surface.
5. Remove metallic objects between the mouse and the USB Nano receiver.
6. If the USB Nano receiver is plugged into a USB hub, try plugging it directly into the computer.



© 2010 Logitech. All rights reserved. Logitech, the Logitech logo, and other Logitech marks are owned by Logitech and may be registered. All other trademarks are the property of their respective owners. Logitech assumes no responsibility for any errors that may appear in this manual. Information contained herein is subject to change without notice.

Apple, Mac, and Macintosh are trademarks of Apple Inc., registered in the U.S. and other countries.
620-002348.004

+41-(0)22 761 40 25
Fax: +41-(0)21 863 54 02



M/N:C-U0003
Rating:5V .100mA
FCC ID: JNZCU0003
IC: 4418A-CU0003
MADE IN CHINA
M/N:C-U0007
Rating:5V .100mA
FCC ID: JNZCU0007
IC: 4418A-CU0007
MADE IN CHINA

Documents / Resources

	logitech Wireless Mouse M310 [pdf] User Guide Wireless Mouse M310, Wireless Mouse, M310 Mouse, Mouse
--	---

References

- [Logitech Support + Download](#)