



logitech Wireless Gaming Mouse User Guide

[Home](#) » [Logitech](#) » logitech Wireless Gaming Mouse User Guide 

Contents

- [1 logitech Wireless Gaming Mouse](#)
- [2 SETUP INSTRUCTIONS](#)
 - [2.1 11 FULLY PROGRAMMABLE BUTTONS](#)
 - [2.2 LIGHTSPEED BATTERY LIFE](#)
- [3 Documents / Resources](#)
 - [3.1 References](#)
- [4 Related Posts](#)

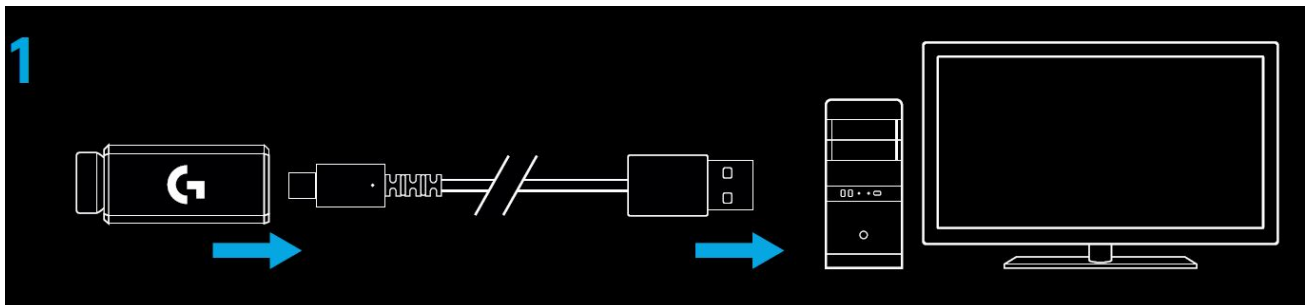
logitech

logitech Wireless Gaming Mouse

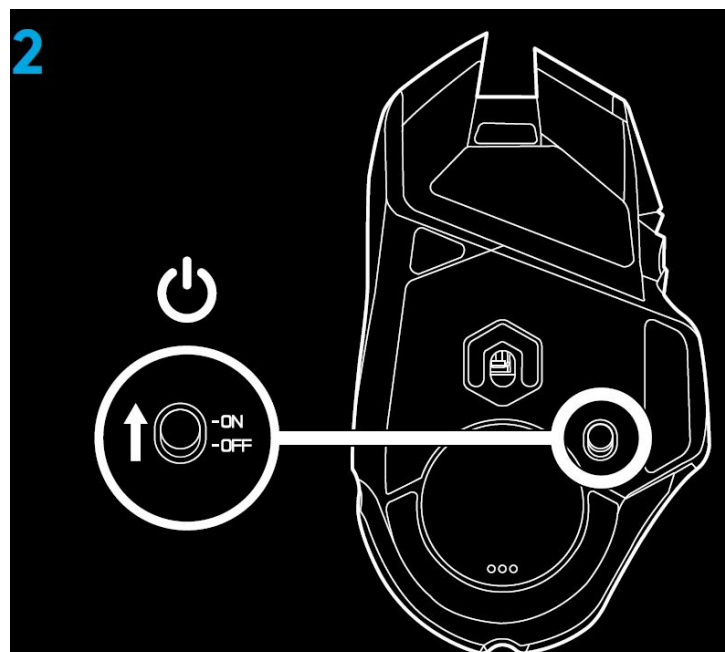


SETUP INSTRUCTIONS

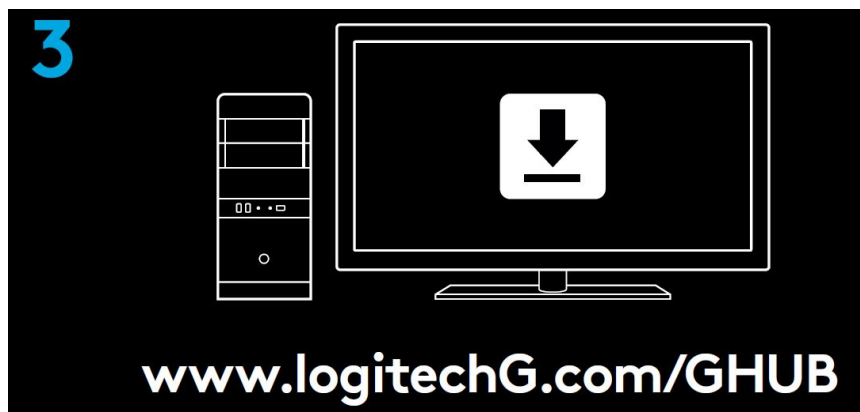
1. A wireless receiver attached to the USB adapter can be found in the accessory box. Plug one end of the cable into your PC, and the other end into the USB adapter and receiver. — The receiver can also be used plugged directly into your PC. However, using the cable and adapter when in wireless mode is recommended and allows for better connectivity and easy access to the cable for recharging.



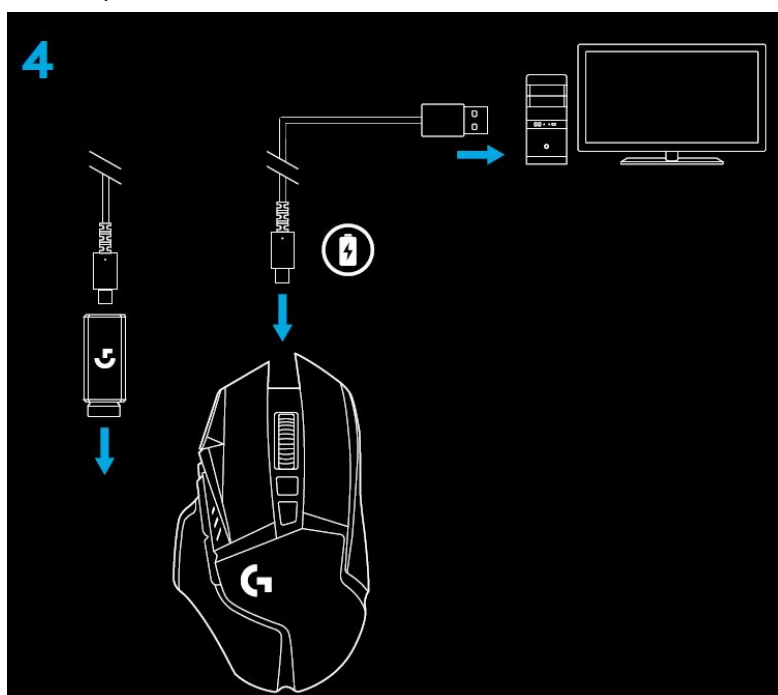
2. Turn mouse on via the switch on the bottom of the mouse.



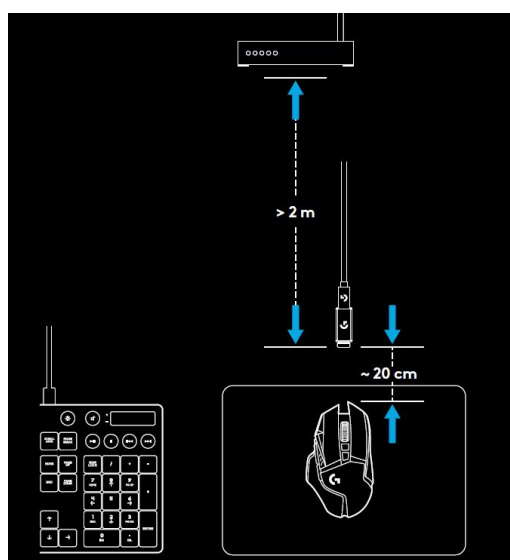
3. Download Logitech G HUB gaming software.



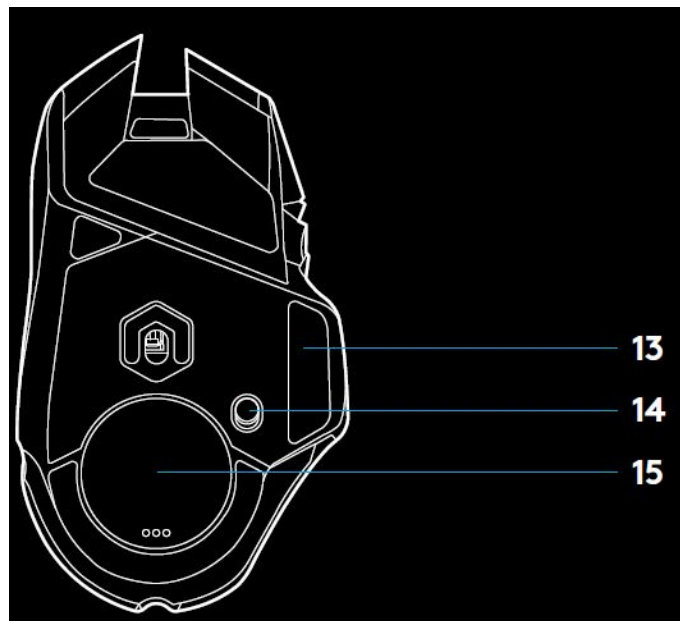
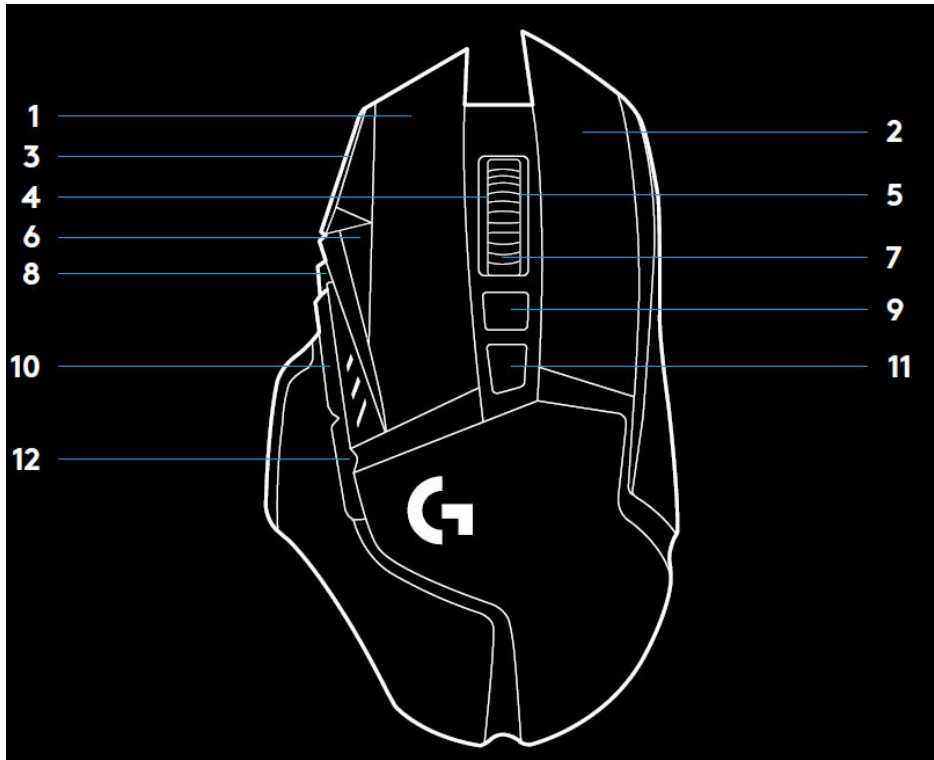
4. To charge, disconnect the cable from the adapter and plug into the front of the mouse. Your mouse will operate in data-over-cable mode whenever it is plugged in directly to a PC. Full charge from empty requires around 2 hours plugged in to a PC USB port.



Tips: Keep the mouse and receiver 2 m+ away from wireless routers or other 2.4GHz wireless devices to minimize environmental noise. G502 LIGHTSPEED has a wireless range of up to 10 meters. To ensure optimal performance in noisy wireless environments, and to keep the charging cable easily accessible, it is recommended to keep the receiver within 20 cm of the mouse.



11 FULLY PROGRAMMABLE BUTTONS

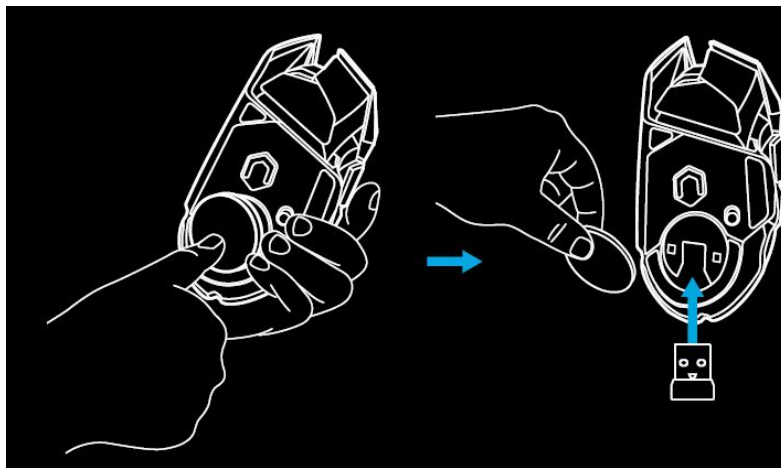
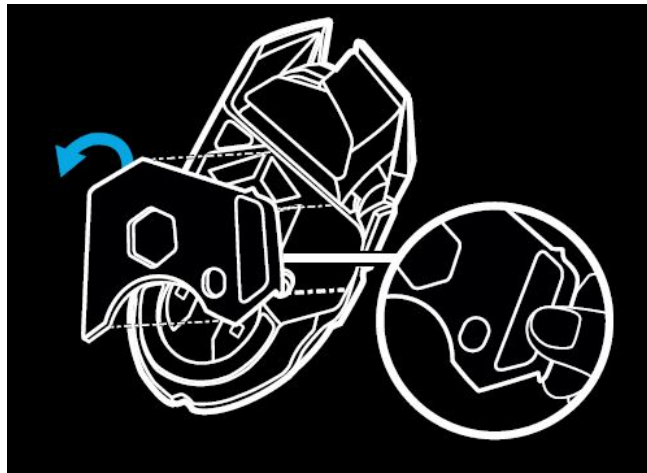


1. Left click (Button G1)
2. Right click (Button G2)
3. DPI up (Button G8)
4. Scroll left (Wheel tilt left)
5. Scroll right (Wheel tilt right)
6. DPI down (Button G7)
7. Middle click (Button G3)
8. DPI shift/Sniper button (Button G6)
9. Wheel mode toggle button (not programmable)
10. Forward (Button G5)
11. Battery status (Button G9)
12. Back (Button G4)

13. Upper weight door (bottom of mouse)
14. On/Off switch (bottom of mouse, not programmable)
15. Lower weight and receiver storage door (bottom of mouse)

WEIGHT CUSTOMIZATION, RECEIVER STORAGE AND POWERPLAY

- The upper weight door can be open by pulling on its right edge. 4x 2-gram weights can be added.
- The lower weight and receiver storage cover can be opened by pressing inwards at the bottom of the cover with the thumb and pulling it out with the other hand. 2x 4-gram weights can be added inside the receiver storage cover.
- The receiver storage cover and weights can be replaced by the POWERCORE adapter available with the POWERPLAY wireless charging system (sold separately).



LIGHTSPEED BATTERY LIFE

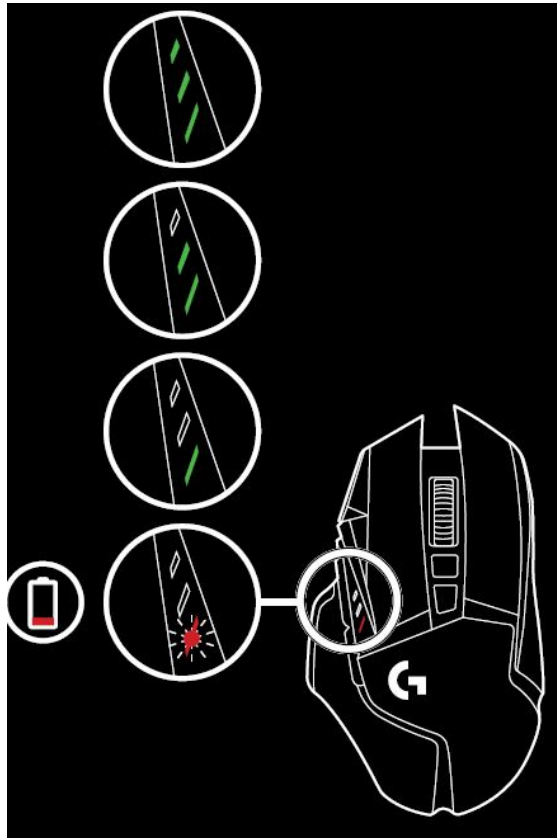
G502 LIGHTSPEED has a rechargeable 250mAH LiPol battery which provides it with up to 55 hours non-stop gaming at 1ms report rate with lights off, or 48 hours non-stop gaming at 1ms report rate with RGB color cycling on.*

- Charge level can be checked when the mouse is powered on or by pressing the G9 button or using Logitech G HUB to assign a button to check charge level.
- Charge level is displayed for seven seconds at mouse power-on using the color and number of bars illuminated on the DPI indicator:
- 3 green lines = 50–100%

- 2 green lines = 30–50%
- 1 green line = 15–30%
- 1 flashing red line = <15%

Tips:

- The bottom dot will flash red when battery is at 15% or less. When this happens, plug in your mouse to charge.
- Charge level, power draw, and estimated remaining battery life can be checked in Logitech G HUB. * Battery life and capacity may vary with age and use. Rechargeable batteries have a limited number of charge cycles.



CHARGING/DATA OVER CABLE

Plug your mouse in via the provided USB charging cable when the battery is low. G502 LIGHTSPEED is also compatible with the Logitech G POWERPLAY wireless charging system, sold separately.

LOGITECH G HUB

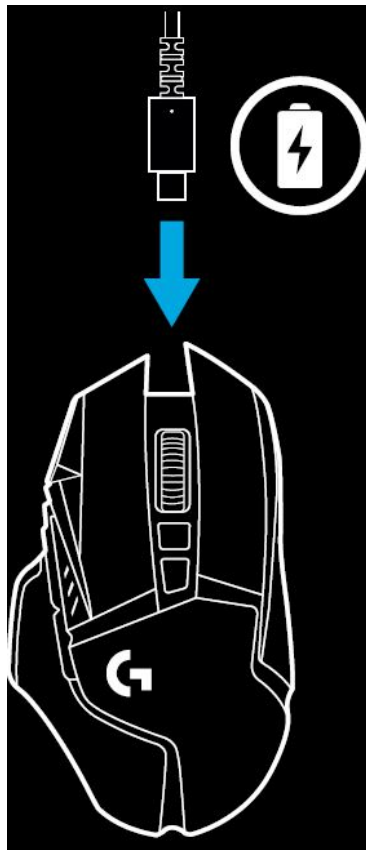
You can customize the onboard profile settings using the Logitech G HUB. These settings include button programming, report rate, performance/endurance modes and tracking behavior. G502 LIGHTSPEED allows up to 5 DPI settings. By default, G502 LIGHTSPEED has the following settings:

DPI: 400/800/1600/3200/6400

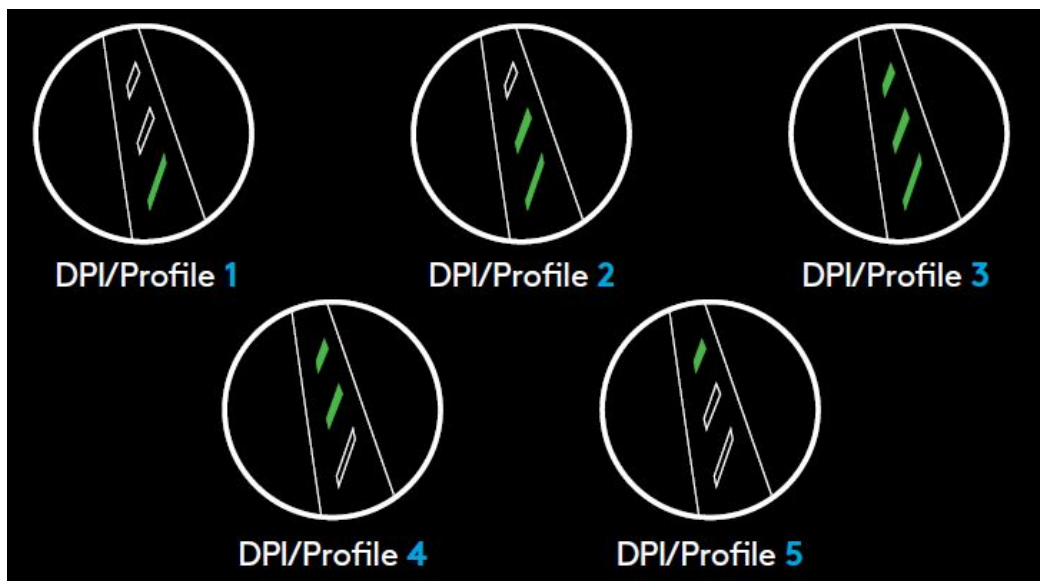
Report rate: 1ms

Tips:

G502 LIGHTSPEED has 1 on-board profile by default but supports up to 5 onboard profiles. Extra profiles can be added using Logitech G HUB.



DPI/ONBOARD PROFILE INDICATORS



DPI/Onboard profiles are shown using three LEDs above the thumb buttons. The illustrations above shows which values are being indicated by the LED panel.

logitech

Documents / Resources



[logitech Wireless Gaming Mouse](#) [pdf] User Guide
Wireless Gaming Mouse, G502

References

- [Logitech G HUB Advanced Gaming Software, RGB & Game Profiles](#)
- [Logitech Support + Download Sustainability Navigation](#)

Manuals+.