



# logitech VR0022 Scribe Whiteboard Camera User Guide

[Home](#) » [Logitech](#) » logitech VR0022 Scribe Whiteboard Camera User Guide 

logitech<sup>®</sup>

SCRIBE  
Setup Guide

Contents

1

WHAT'S IN THE BOX

2

CAMERA I/O

3

CONNECTIONS OVERVIEW

4

RECOMMENDED BUTTON PLACEMENT  
HEIGHT

5

Documents / Resources

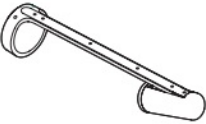


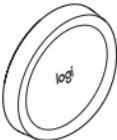
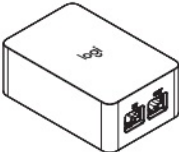
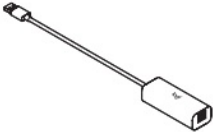
5.1

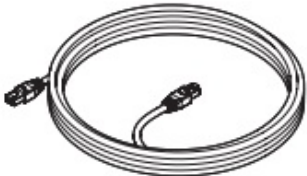





References

6

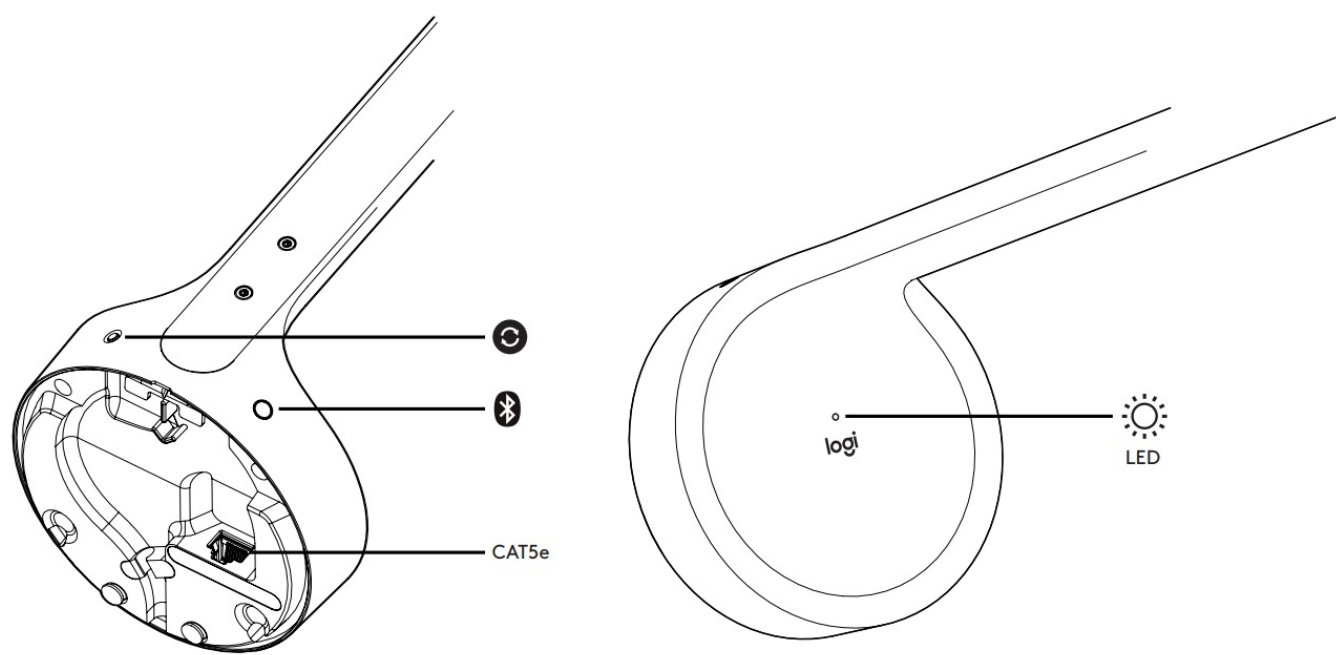
Related Posts

## WHAT'S IN THE BOX

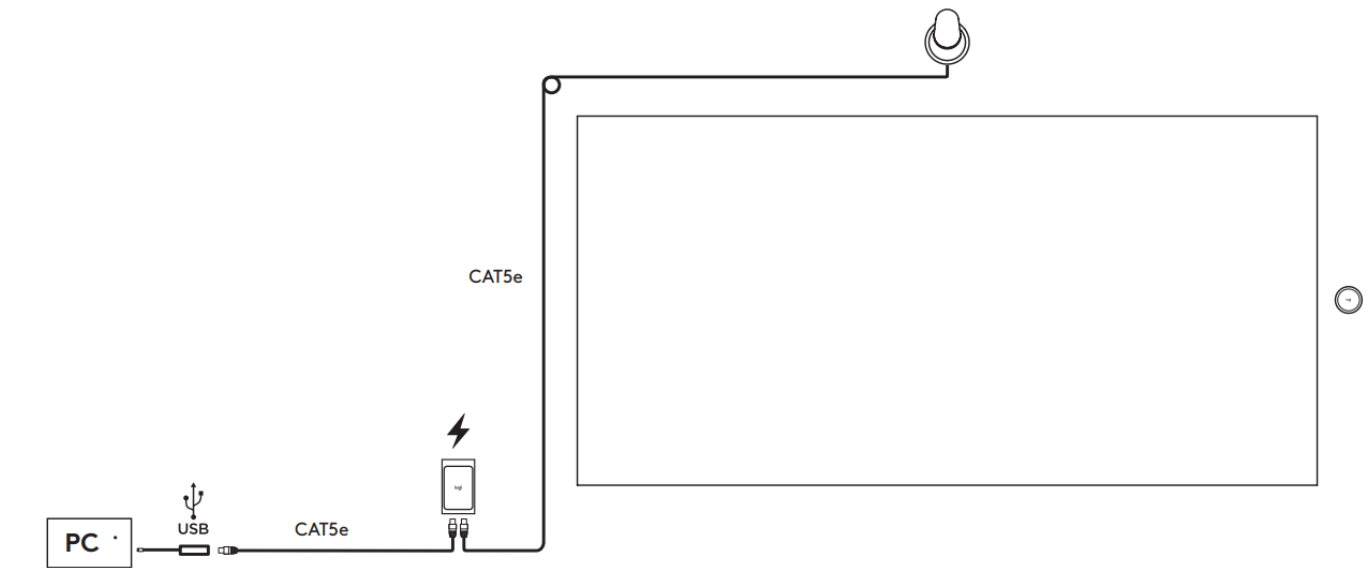
					
Camera Unit	Camera Mounting Bracket	Mounting Template	Share Button	Power Injector	Dongle Transceiver

 (2x)	 (2x)	 (4x)		 (4x)	 (4x)
CAT5e Cables	Cable Clips	Boundary Stickers	IEC C8 Power Cord Adapter	Molly Bolts	Wood Screws

CAMERA I/O

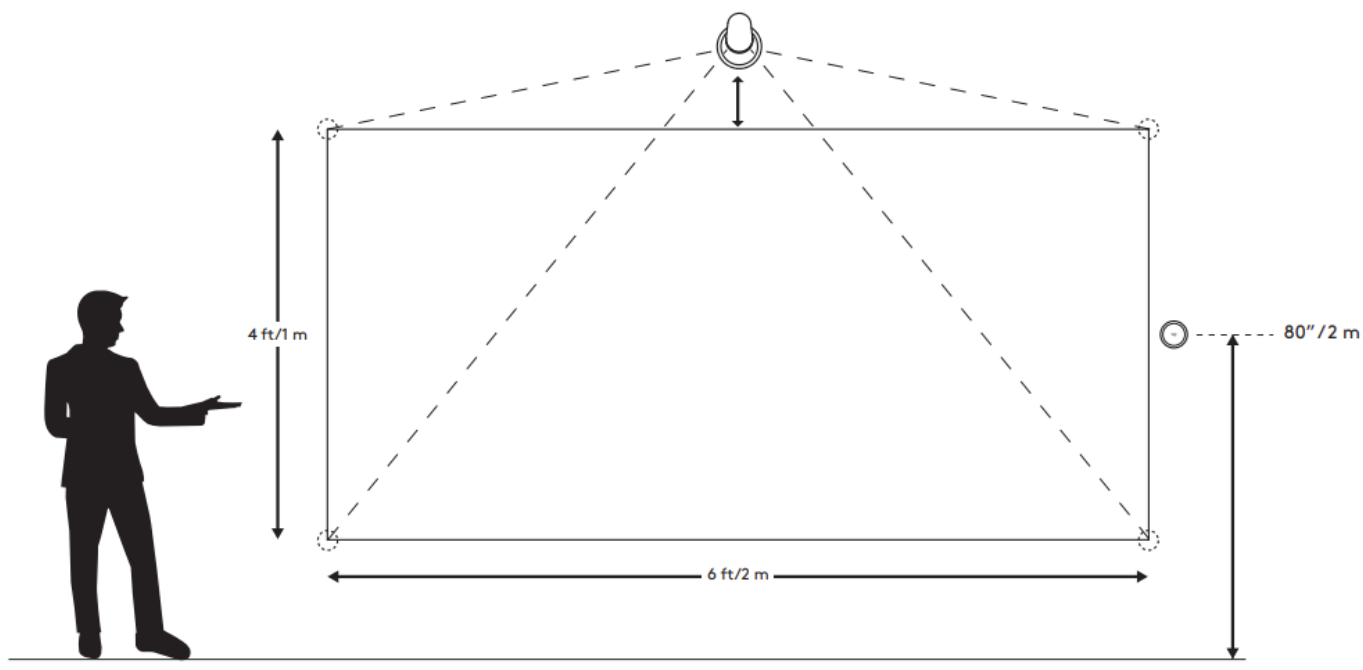


CONNECTIONS OVERVIEW



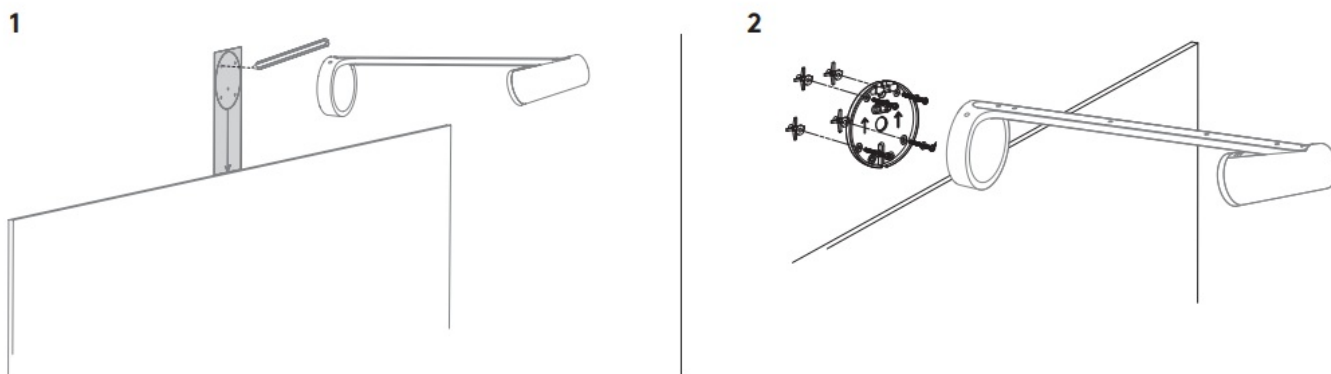
RECOMMENDED CAMERA PLACEMENT HEIGHT

If needed, apply boundary stickers to mark the max capture area.

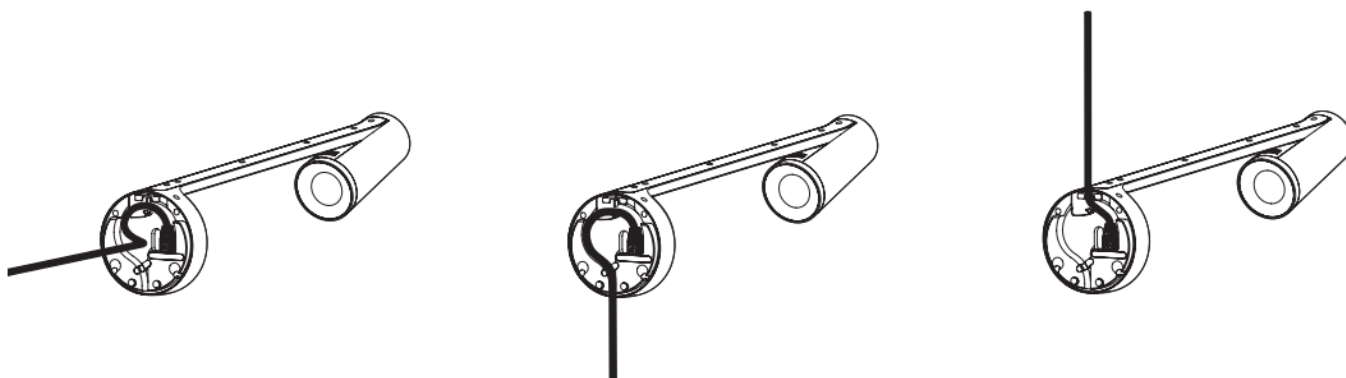


### STEP 1: ATTACH THE CAMERA MOUNTING BRACKET

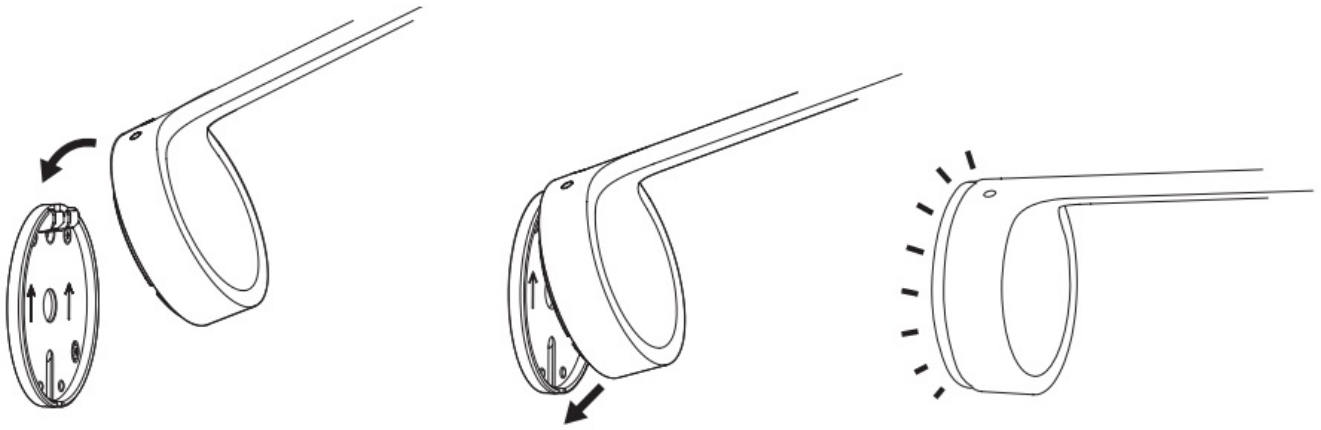
Mark screw hole locations using the mounting template.



### STEP 2: PLUG IN THE CAT5E CABLE AND CHOOSE A ROUTING OPTION

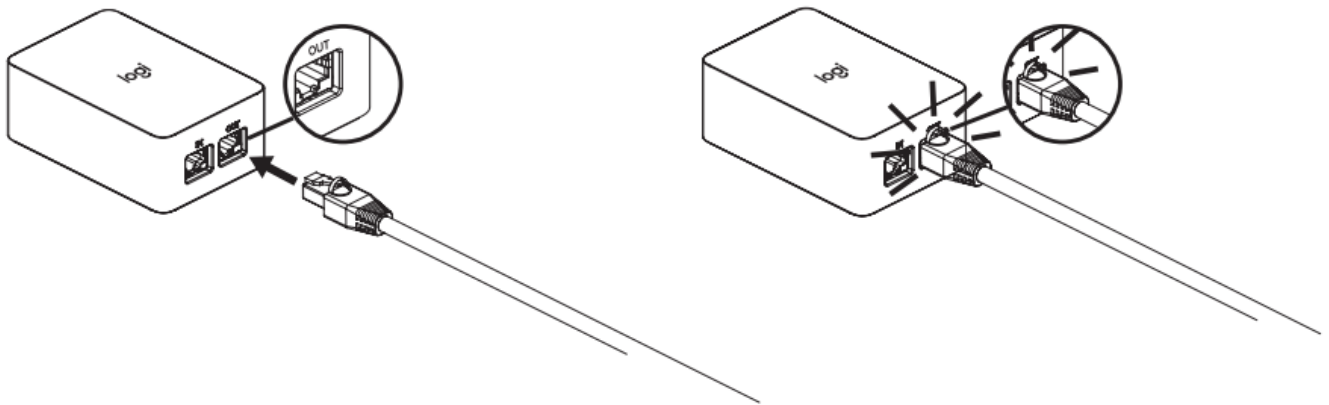


### STEP 3: ATTACH THE CAMERA ONTO THE CAMERA MOUNTING BRACKET

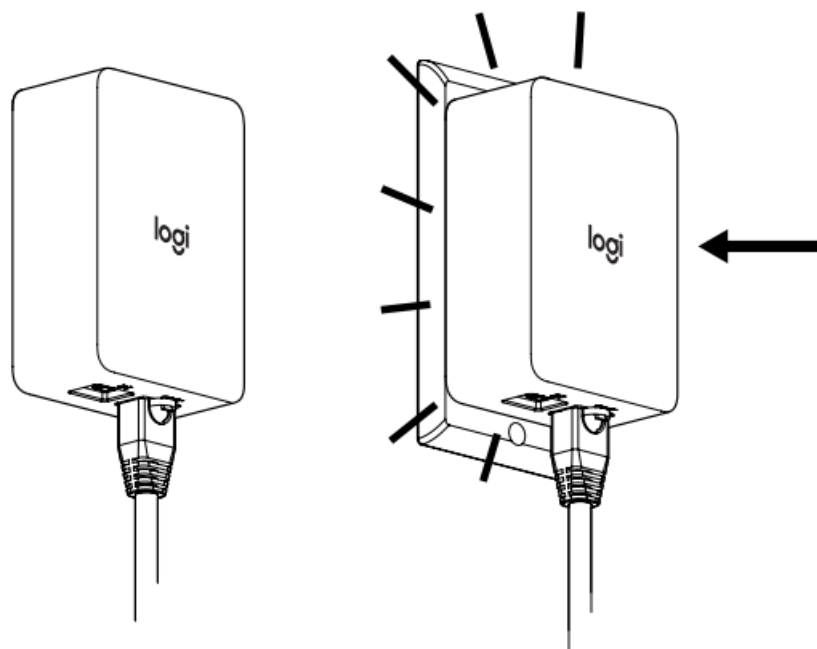


#### STEP 4: CONNECT THE CAT5E CABLE TO THE POWER INJECTOR

Insert cable connected to camera to “OUT”.

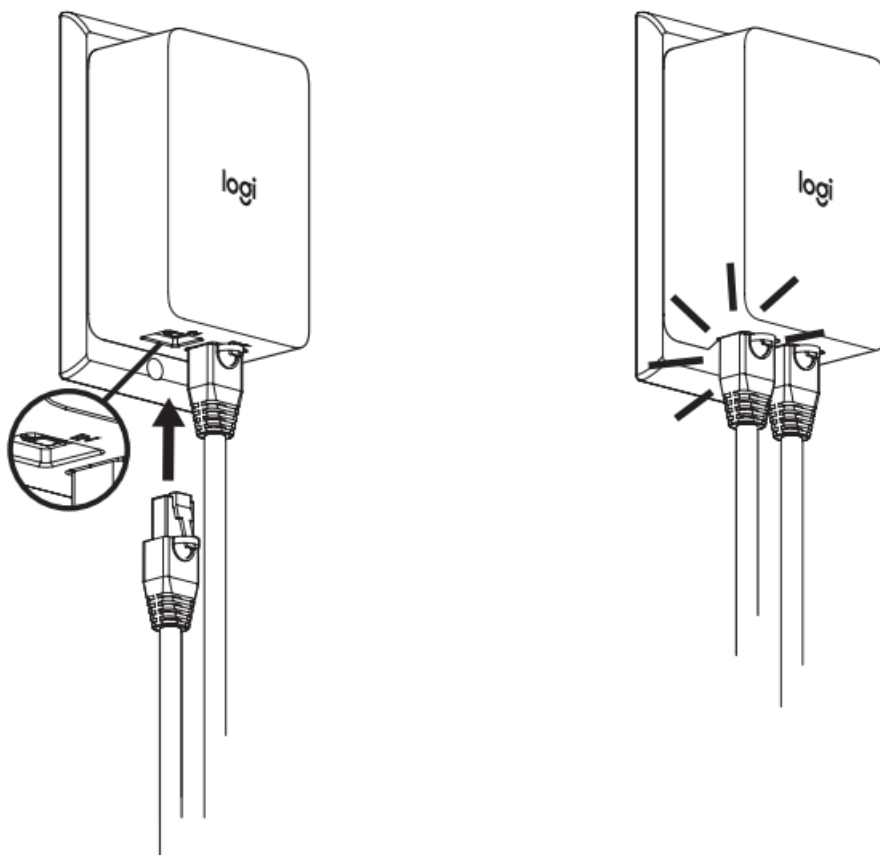


#### STEP 5: CONNECT THE POWER INJECTOR TO A POWER OUTLET

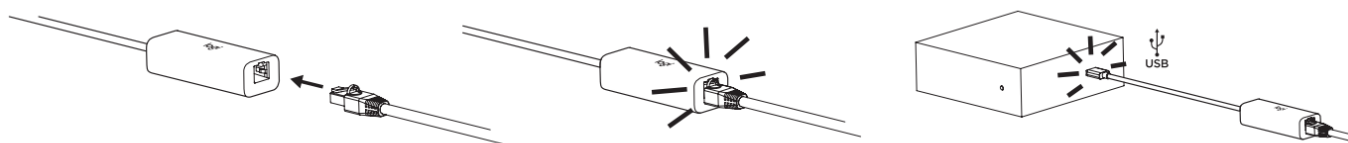


## STEP 6: CONNECT SECOND CAT5E CABLE TO THE POWER INJECTOR

Insert cable connected to camera to "IN".

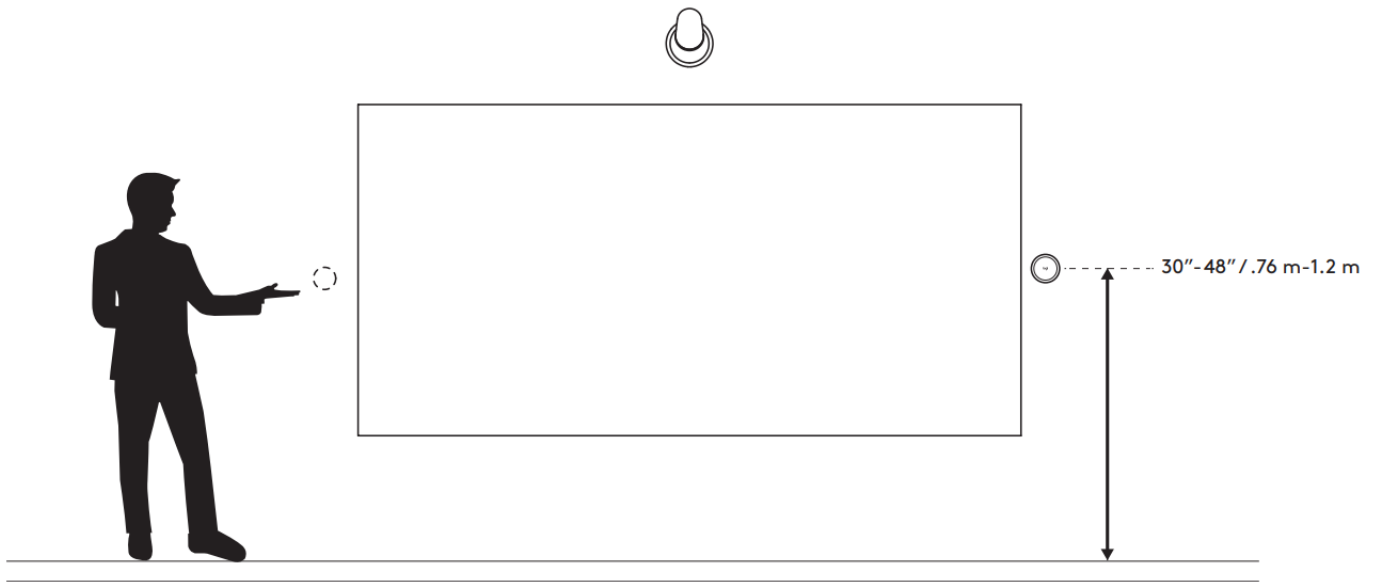


## STEP 7: CONNECT THE OTHER END TO THE DONGLE TRANSCEIVER. PLUG THE DONGLE TRANSCEIVER INTO THE MEETING ROOM PC.



## RECOMMENDED BUTTON PLACEMENT HEIGHT

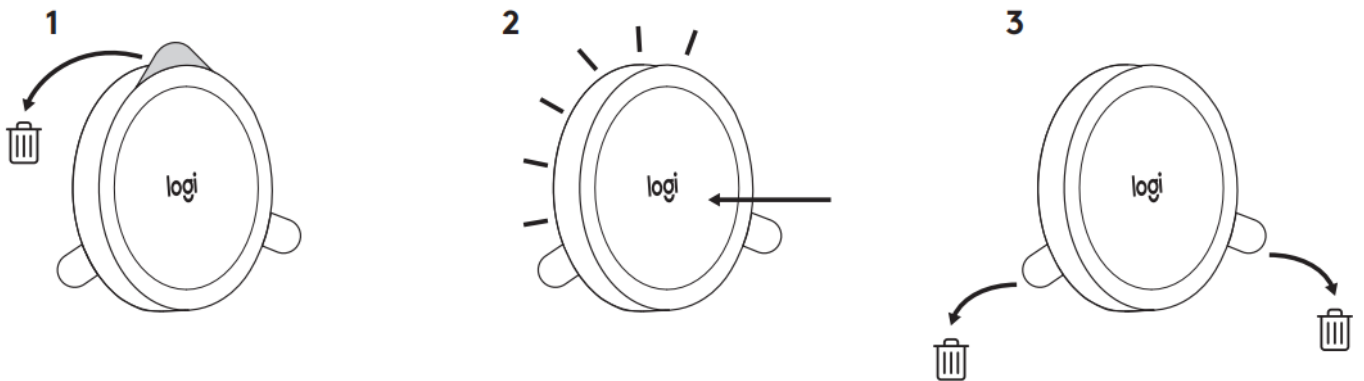
Install the button 30" - 48" from the floor.



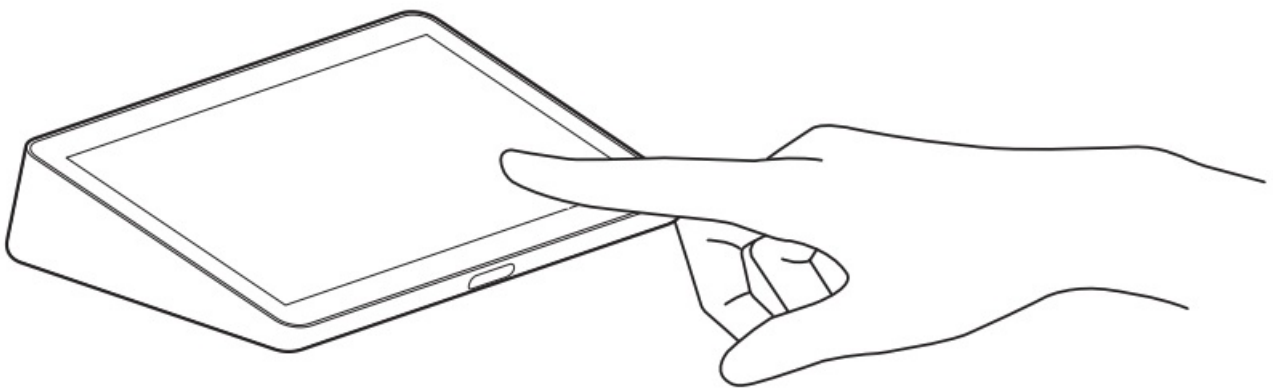
#### STEP 8: INSTALL SHARE BUTTON



Remove the battery pull tabs only after you have mounted Shore Button to the wall.



#### STEP 9: START WHITEBOARD SHARING FROM MEETING ROOM TOUCH CONTROLLER



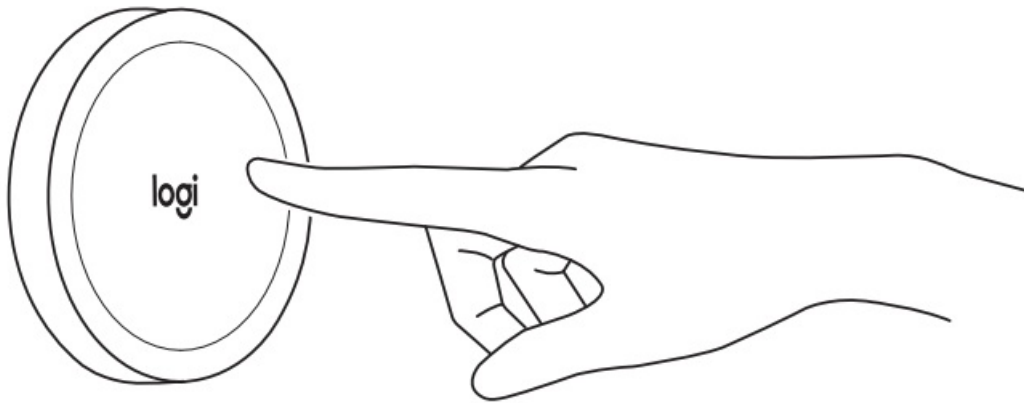
#### STEP 10: CONFIRM CALIBRATION TO FINISH SETUP

If calibration is correct, press the Share button to confirm. If calibration is incorrect, download Logitech Sync to adjust boundaries. [logitech.com/sync](https://logitech.com/sync).



## STEP 11: READY TO GO!

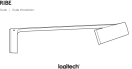
Press Shore Button to easily start/stop whiteboard shoring into meetings.



[www.logitech.com/support](http://www.logitech.com/support)

© 2021 Logitech, Logi, and the Logitech Logo are trademarks or registered trademarks of Logitech Europe S.A. and/or its affiliates in the U.S. and other countries. All other trademarks are the property of their respective owners. Logitech assumes no responsibility for any errors that may appear in this manual. Information contained herein is subject to change without notice.  
620-010125 003

## Documents / Resources

	<a href="#">logitech VR0022 Scribe Whiteboard Camera</a> [pdf] User Guide VR0022, JNZVR0022, VR0022 Scribe Whiteboard Camera, Scribe Whiteboard Camera
---	---

## References

- [logi Sync | Video Conferencing Device Management Software](#)
- [logi Logitech Support + Download](#)