



 **Logitech** BLUETOOTH AUDIO ADAPTER

logitech USB Powered Bluetooth Audio Receiver User Guide

[Home](#) » [Logitech](#) » logitech USB Powered Bluetooth Audio Receiver User Guide 

Contents

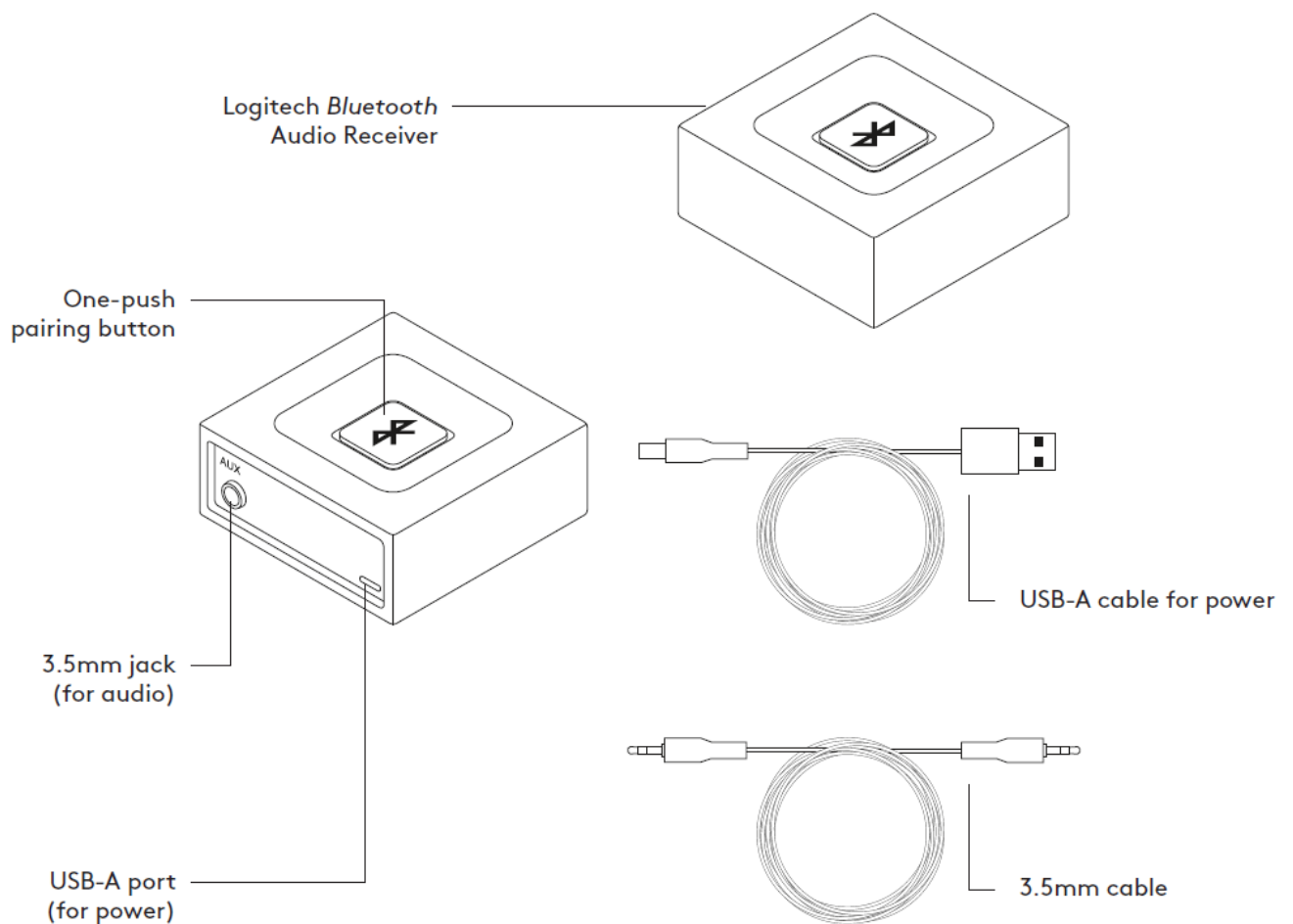
- [1 logitech USB Powered Bluetooth Audio Receiver](#)
- [2 KNOW YOUR PRODUCT](#)
- [3 CONNECT THE RECEIVER TO A POWER SOURCE](#)
- [4 CONNECT THE RECEIVER TO YOUR SPEAKERS](#)
- [5 CONNECT TO TWO DEVICES SIMULTANEOUSLY](#)
- [6 RECONNECT A BLUETOOTH DEVICE](#)
- [7 Documents / Resources](#)
 - [7.1 References](#)
- [8 Related Posts](#)

logitech[®]

logitech USB Powered Bluetooth Audio Receiver

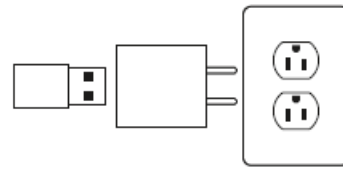


KNOW YOUR PRODUCT

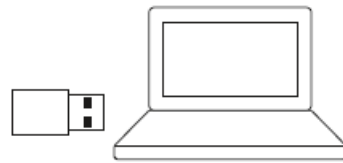


CONNECT THE RECEIVER TO A POWER SOURCE

1A



1B



1A. Connect the power supply to the Logitech USB Powered Bluetooth Audio Receiver. Then plug the power plug into electrical outlet.

1B. Connect the Logitech USB Powered Bluetooth Audio Receiver to your laptop / computer for power via the USB-A charging cable.

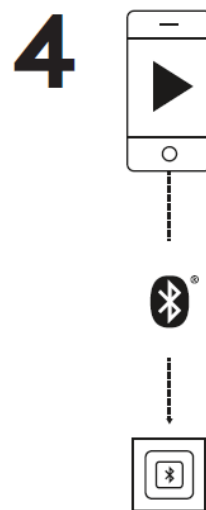
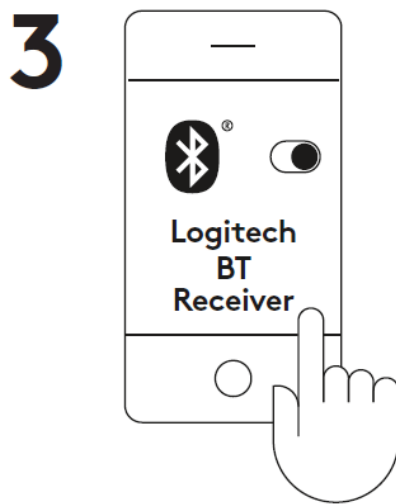
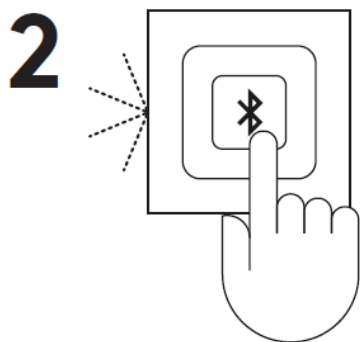
CONNECT THE RECEIVER TO YOUR SPEAKERS

1. Connect one end of the 3.5mm cable to the 3.5mm jack on your speaker. Connect the other end of the same 3.5 mm cable to the Logitech USB Powered Bluetooth Audio Receiver.

1

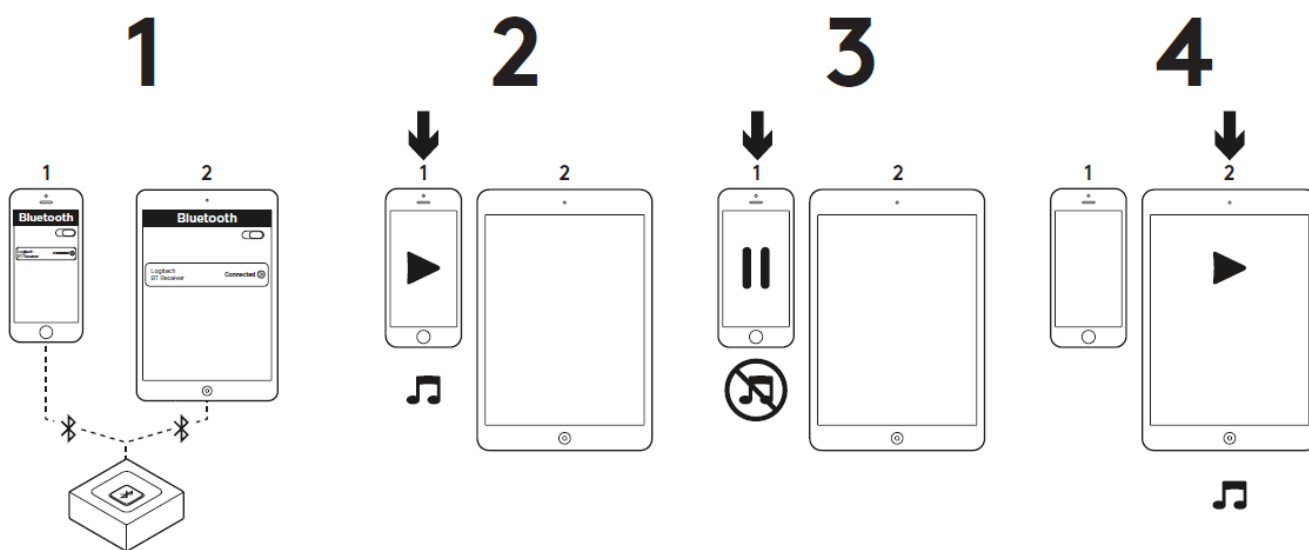


2. Press the Bluetooth pairing button on the Logitech USB Powered Bluetooth Audio Receiver. It will initiate the pairing and the LED will start blinking (for first time user, the pairing process will be initiated automatically).



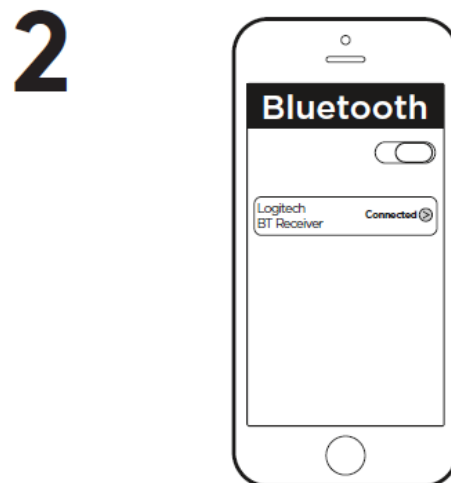
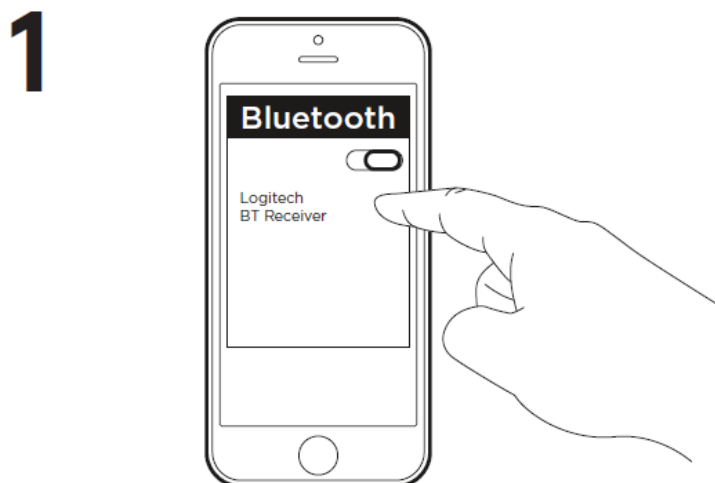
3. Turn on Bluetooth on your device and scan for Bluetooth devices. You will see "Logitech BT Receiver" on the device list. Select and connect to it.
4. The LED will turn to a steady blue light. You can now play music through your audio device wirelessly.
5. To connect your second device, repeat step 2 through step 4.

CONNECT TO TWO DEVICES SIMULTANEOUSLY



1. Make sure that your two devices are connected to the Logitech USB Powered Bluetooth Audio Receiver following the steps above. In case you were disconnected, please check your Bluetooth device list, select "Logitech BT Receiver" and reconnect.
2. Play music on device 1.
3. Pause music on device 1.
4. Start playing music on device 2, the audio will switch automatically and will stream from device 2. It may take a few seconds to switch between devices.

RECONNECT A BLUETOOTH DEVICE



Logitech USB Powered Bluetooth Audio Receiver will reconnect automatically to the latest connected device.

1. If you are not using the latest connected device and you want to reconnect to Logitech USB Powered Bluetooth Audio Receiver, you need to select Logitech BT Receiver in your Bluetooth device list on your device.
2. You are connected again to Logitech USB Powered Bluetooth Receiver and can stream music from your device.

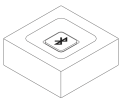
NOTE: Logitech USB Powered Bluetooth Audio Receiver can store up to eight Bluetooth devices in its memory (while two devices can connect simultaneously).

logitech®

www.logitech.com/support/bluetooth-audio-receiver

© 2019 Logitech. Logitech, Logi and other Logitech marks are owned by Logitech and may be registered. All other trademarks are the property of their respective owners. Logitech assumes no responsibility for any errors that may appear in this manual. Information contained herein is subject to change without notice.

Documents / Resources

 <p>logitech</p>	<p>logitech USB Powered Bluetooth Audio Receiver [pdf] User Guide USB Powered Bluetooth Audio Receiver</p>
---	--

References

-  [Logitech Support + Download Sustainability Navigation](#)

[Manuals+.](#) [home](#) [privacy](#)