



logitech RR0017 Scribe Whiteboard Camera Instructions

[Home](#) » [Logitech](#) » logitech RR0017 Scribe Whiteboard Camera Instructions 

Contents

- [1 logitech RR0017 Scribe Whiteboard Camera](#)
- [2 Important Safety, Compliance and Warranty Information](#)
- [3 FCC statement](#)
- [4 Documents / Resources](#)
 - [4.1 References](#)
- [5 Related Posts](#)

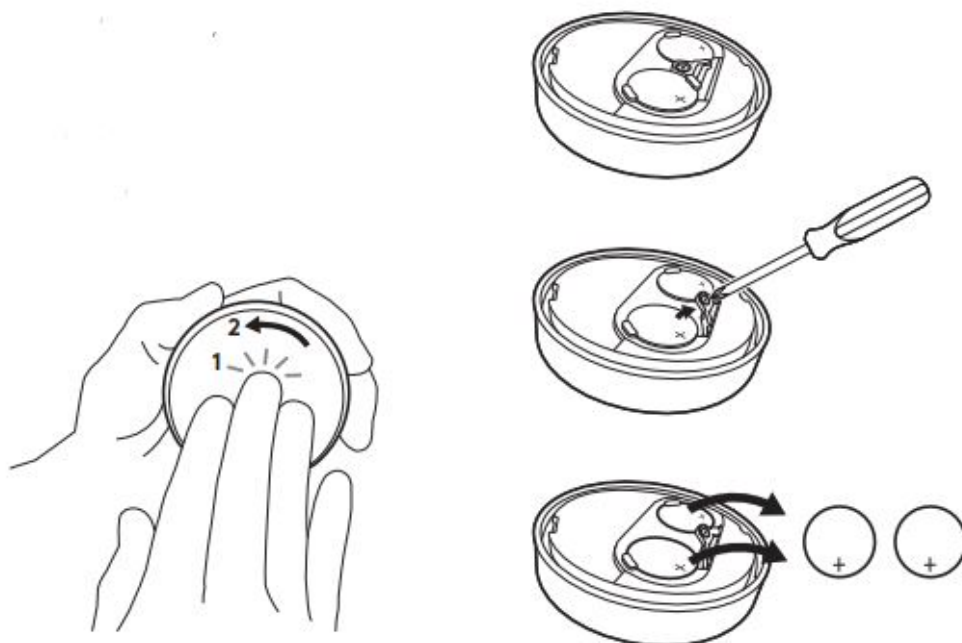


logitech RR0017 Scribe Whiteboard Camera



Important Safety, Compliance and Warranty Information

Battery removal for recyclin



POWER SUPPLY WARNING!

The power supply is for indoor use only. Only use the power supply included with your product. Do not attempt to repair or use a damaged power supply. Do not immerse the power supply in water or subject it to physical abuse. Inspect the power supply regularly for cable, plug, and casing damage.

BATTERY WARNING!:

Improperly replaced batteries may present a risk of leak or explosion and personal injury. Risk of fire or explosion if the battery is replaced by an incorrect type. Ensure batteries are installed correctly by following the instructions provided. Mistreated rechargeable batteries may present a risk of fire or chemical burn. Do not disassemble or expose to conducting materials, moisture, liquid, or heat above 54° C (130° F). A battery subjected to extremely low air pressure may result in an explosion or the leakage of flammable liquid or gas. Do not use or charge the battery if it appears to be leaking, discolored, deformed, or in any way abnormal. Do not leave your battery discharged or unused for extended periods. Do not short circuit. Your device may contain an internal, rechargeable battery that is not replaceable. Battery life varies with usage. Non-operational batteries should be discarded according to local laws. If no laws or regulations govern, dispose of your device in a waste bin for electronics. Keep batteries away from children.

Do not ingest battery, Chemical Burn Hazard.

This product contains a coin/button cell battery. If the coin/button cell battery is swallowed, it can cause severe internal burns in just 2 hours and can lead to death. Keep new and used batteries away from children.

If the battery compartment does not close securely, stop using the product and keep it away from children. If you think batteries might have been swallowed or placed inside any part of the body, seek immediate medical attention. Never place batteries in your mouth for any reason as they may be swallowed accidentally. Always check medication before ingesting

as adults have mistaken button batteries for pills or tablets. Contact the National Battery Ingestion Hotline at (202) 625-3333 (United States).

Perchlorate material – special handling may apply.

See <http://www.dtsc.ca.gov/hazardouswaste/perchlorate/>

Safe Usage Guidelines for Products

Do not open or modify the product except for battery removal and replacement.

- Do not open or modify the product except for battery removal and replacement.

- Do not disassemble or attempt to service this product.
- Use the product with listed/certified ITE computers and accessories.
- Connect power supply or power cord to a properly wired and grounded electrical outlet.
- This product is safe under normal and reasonably foreseeable operating conditions.
- If product is operating improperly, please contact Logitech support.
- Product must be returned to the manufacturer for any service or repair.
- This is not a Children's Product and is not intended for use by children under 14 years old.
- Warning: Not suitable for children under 36 months. Small parts. Choking hazard.
- Install device according to provided instructions. Improper installation of this product may cause damage or injury.
- Mount device properly according to the provided instructions.

Logitech Compliance:

The product complies with all applicable requirements for Restriction of Hazardous Substances (RoHS) and Waste Electronic and Electrical Equipment (WEEE). For Product Safety, EMC, RF, Energy, RoHS and WEEE information, go to www.logitech.com/compliance. Maintenance is not required for product compliance. Batteries, electronic and electrical equipment should not be disposed of with household waste. Wherever possible, they should be segregated and brought to an appropriate collection point to enable recycling and avoid potential impacts on the environment and human health. For more information, contact your local authorities or place of purchase, or visit www.logitech.com/recycling.

FCC statement

This device complies with Part 15 of the FCC Rules. Operation is subject to the following two conditions:

1. this device may not cause harmful interference, and
2. this device must accept any interference received, including interference that may cause undesired operation.

Note:

This equipment has been tested and found to comply with the limits for a Class A digital device, pursuant to part 15 of the FCC Rules. These limits are designed to provide reasonable protection against harmful interference when the equipment is operated in a commercial environment. This equipment generates, uses, and can radiate radio frequency energy and, if not installed and used in accordance with the instruction manual, may cause harmful interference to radio communications. Operation of this equipment in a residential area is likely to cause harmful interference in which case the user will be required to correct the interference at his own expense.

Warning:

Where shielded interface cables or accessories have been provided with the product or specified additional components or accessories elsewhere defined to be used with the installation of the product, they must be used in order to ensure compliance with FCC. Changes or modifications to product not expressly approved by Logitech, Inc could void your right to use or operate your product by the FCC.

Radiation Exposure Statement:

This equipment complies with FCC and IC radiation exposure limits set forth for an uncontrolled environment. This equipment should be installed and operated with minimum distance 20cm between the radiator & your body.

IC statement: CAN ICES-3 (A) / NMB-3 (A)

This device contains licence-exempt transmitter(s)/receiver(s) that comply with Innovation, Science and Economic Development Canada's licence-exempt RSS(s). Operation is subject to the following two conditions: (1) This device may not cause interference. (2) This device must accept any interference, including interference that may

cause undesired operation of the device.

Warning


This is a class A product. In a domestic environment, this product may cause radio interference in which case the user may be required to take adequate measures.

Logitech Limited Hardware Product Warranty – A Summary





Logitech warrants that its hardware product shall be free from defects in materials and workmanship for the length of time identified on your product package beginning from the date of the original retail purchase. See support.logitech.com for specific warranty information about your product and procedures to act on a warranty claim. Logitech’s entire liability and your exclusive remedy for any breach of warranty shall be, at Logitech’s option, to repair or replace a functional equivalent of the product, or to refund the price paid, if the hardware is returned to the point of purchase or such other place as Logitech may direct along with a receipt. Warranty protections are in addition to rights provided under local consumer laws and may vary among countries. See full warranty information to know your consumer rights and the additional protections provided by this product warranty.

- **Logitech Address:** Logitech, Inc., 7700 Gateway Blvd. Newark, California 94560.
- **Full Warranty Information:** support.logitech.com

Documents / Resources

	logitech RR0017 Scribe Whiteboard Camera [pdf] Instructions RR0017, JNZRR0017, RR0017 Scribe Whiteboard Camera, Scribe Whiteboard Camera, White board Camera, Camera
--	---

References

-  [Logitech Support + Download](#)
-  dtsc.ca.gov/hazardouswaste/perchlorate/
-  [Compliance Certification Search | Logitech](#)
-  [Global Recycling Program for Ewaste and Batteries - Logitech](#)