



Logitech R400 Presenter Disassembly Installation Guide

[Home](#) » [Logitech](#) » Logitech R400 Presenter Disassembly Installation Guide 

Contents

- [1 Logitech R400 Presenter Disassembly](#)
- [2 Logitech R400 Presenter Disassembly](#)
- [3 PRODUCT INTRODUCTION](#)
- [4 Product Usage Instructions](#)
- [5 INTRODUCTION](#)
- [6 TOOLS](#)
- [7 Documents / Resources](#)
 - [7.1 References](#)



Logitech R400 Presenter Disassembly



Logitech R400 Presenter Disassembly

Guide ID: 75431 – **Draft:** 2022-05-23

Short disassembly instructions for the Logitech R400 Presenter

TOOLS

- Phillips #0 Screwdriver (1)
- Flathead 3/32 or 2.5 mm Screwdriver (1)

PRODUCT INTRODUCTION

Quick and easy disassembly of the presenter. This guide is specifically for the Logitech R400 Presenter. Similar steps may apply to the R700 and R800 models, but this guide does not cover those models.

Product Usage Instructions

1. Step 1 – Remove the unnecessary parts:
 - Remove the USB-Receiver.
 - Open the battery compartment.
 - Remove the batteries.
2. Step 2 – Remove the sticker:
 - To remove the sticker that's covering the next screws, use a small slot screwdriver and carefully insert it at the shown position. There is a little notch here that guides you in.
3. Step 3 – Remove 2 screws
4. Step 4 – Just another screw:
 - Below the sticker, there are two Philips screws (red). Unscrew them.
 - In the yellow slot, there is a tab that is to be pushed down to unlatch it. If you insert a pick in the seam between the top and the bottom half of the device, it should open easily when downward pressure is applied to the latch.
 - Now carefully pry apart the two halves of the cover, starting from the side of the battery compartment.

- The green board is where all the application logic is in, so be careful not to scratch it.
 - There is one single screw. Unscrew it.
 - Carefully take out the green board. The connectors for the batteries are attached here, so make sure not to break them.
5. Step 5 – Finished: At this point, the disassembly is complete.
6. Step 6 – Not actually part of the disassembly:
- The reason for disassembling the presenter in this guide was that the laser diode (red) did not project out of the case anymore. You can clearly see the laser being at a very odd angle.
 - The yellow marker shows the battery connectors that should not be broken during step 4.
 - In the last image, you can see the fixed laser diode. It was gently pushed down to restore its functionality.

To reassemble your device, follow these instructions in reverse order.

INTRODUCTION

- Quick and easy disassembly of the presenter.
- I ended up breaking a part, but it does not seem to be needed...
- Should be similar for the R700 & R800, but I don't have one...

TOOLS

- Phillips #0 Screwdriver (1)
- Flathead 3/32" or 2.5 mm Screwdriver (1)

Step 1 — Remove the unnecessary parts



- Remove the USB-Receiver.
- Open the battery compartment.
- Remove the batteries.

Step 2 — Remove the sticker



- To remove the sticker that's covering the next screws, I used a small slot screwdriver and carefully inserted it at the shown position.
- There is a little notch here that guides you in.

Step 3 — Remove 2 screws



- Below the sticker we have two Philips screws (red). Unscrew them.
- Edit according to Simon (see comment): In the yellow slot there is a tab that is to be pushed down to unlatch it. If you insert a pick in the seam between the top and the bottom half of the device it should open easily when downward pressure is applied to the latch..
- Now carefully pry apart the two halves of the cover, starting from the side of the battery compartment.

Step 4 — Just another screw



- The green board is where all the application logic is in, so don't scratch it.
- There is one single screw. Unscrew it.
- Carefully take out the green board.
- The connectors for the batteries are attached here, don't break them (though they are quite sturdy). Step 6 has an image how the board looks from the other side.

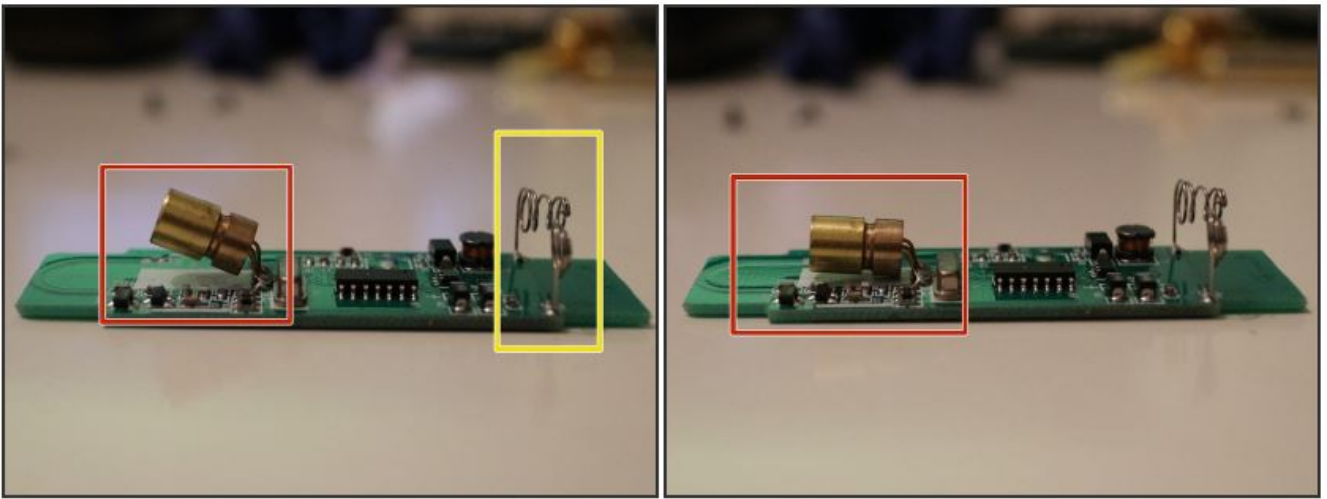
Step 5 — Finished



- This should be the end product.

Step 6 — Not actually part of the disassembly...

-



The reason why I disassembled my presenter was, that the laser diode (red) did not project out of the case anymore. You can clearly see the laser being at a very odd angle. I can not imagine how that happened.

- The yellow marker shows the battery connectors you are not supposed to break in step 4.
- In the last image, you see the “fixed” laser diode. I just gently pushed it down, and now it’s working again.
- To reassemble your device, follow these instructions in reverse order.
- This document was generated on 2022-05-25 at 02:46:23 PM (MST).

© iFixit — CC BY-NC-SA www.iFixit.com.

Documents / Resources

	<p>Logitech R400 Presenter Disassembly [pdf] Installation Guide R400 Presenter Disassembly, R400, Presenter Disassembly, Disassembly</p>
--	--

References

- [iFixit: The Free Repair Manual](#)
- store.ifixit.fr/products/flathead-3-32-or-2-5-mm-screwdriver
- store.ifixit.fr/products/phillips-0-screwdriver