



logitech R400 Laser Presentation Remote User Guide

[Home](#) » [Logitech](#) » logitech R400 Laser Presentation Remote User Guide 

Contents

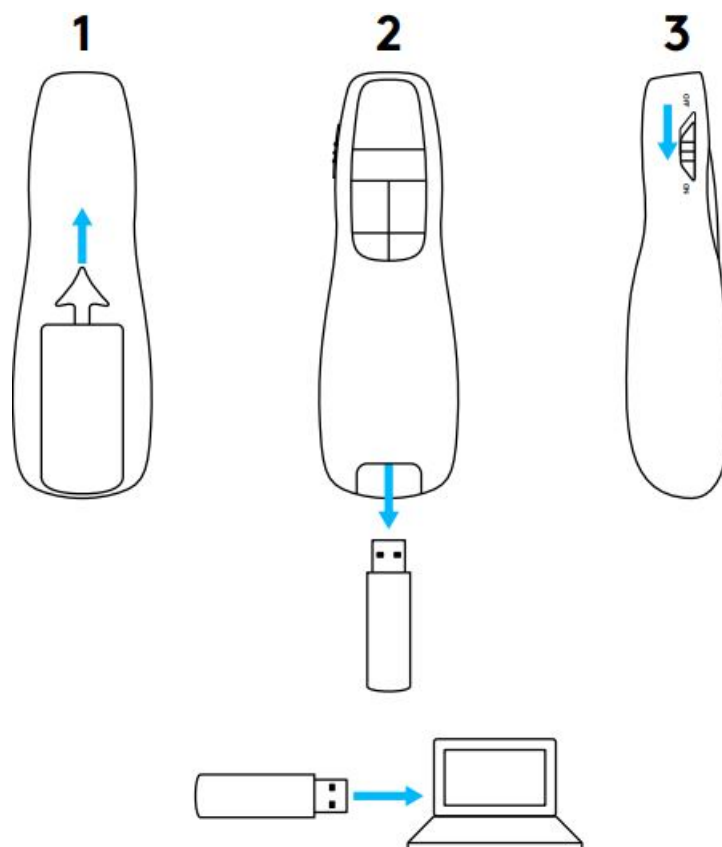
- [1 logitech R400 Laser Presentation Remote](#)
- [2 SETUP](#)
- [3 FEATURES](#)
- [4 HAVING PROBLEMS](#)
- [5 Documents / Resources](#)
 - [5.1 References](#)
- [6 Related Posts](#)

logitech®

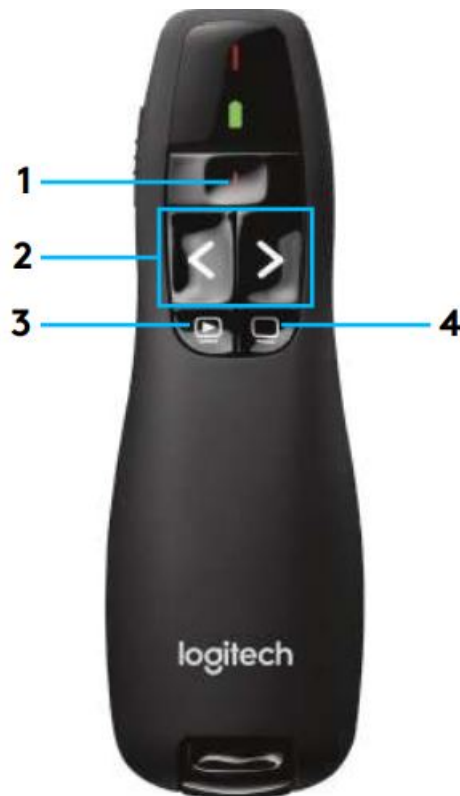
logitech R400 Laser Presentation Remote



SETUP



FEATURES




1. Laser pointer
2. Slide forward and back
3. Launch slide show
4. Black screen (in some applications)

HAVING PROBLEMS

1. Batteries and polarity OK?
2. Power switch on?
3. Receiver plugged in?
4. Range OK (up to 15 meters/50 feet)?
5. Try restarting your computer.

2017 Logitech. Logitech, Logi, and other Logitech marks are owned by Logitech and may be registered. All other trademarks are the property of their respective owners.

Documents / Resources

	<p>logitech R400 Laser Presentation Remote [pdf] User Guide R400 Laser Presentation Remote, R400, R400 Presentation Remote, Laser Presentation Remote, Presentation Remote</p>
---	--

References

-  [Logitech Support + Download](#)

Manuals+.