



logitech Pro X Superlight 2 DEX Lightspeed User Guide

[Home](#) » [Logitech](#) » logitech Pro X Superlight 2 DEX Lightspeed User Guide 

Contents

- [1 logitech Pro X Superlight 2 DEX Lightspeed](#)
- [2 Product Information](#)
- [3 Product Usage Instructions](#)
- [4 IN THE BOX](#)
- [5 PACKAGE CONTENTS](#)
- [6 MOUSE FEATURES](#)
- [7 SETUP](#)
- [8 Documents / Resources](#)
 - [8.1 References](#)
- [9 Related Posts](#)



logitech Pro X Superlight 2 DEX Lightspeed



Specifications:

- Brand: Pro X
- Model: Superlight 2 DEX
- Connectivity: Wireless
- Interface: USB
- Wireless Range: Up to 20cm from receiver
- Compatibility: PC

Product Information

The Pro X Superlight 2 DEX is a wireless mouse designed for gaming and productivity. It features customizable DPI settings, a sleek design, and optional grip tape for enhanced comfort and control.\

Product Usage Instructions

Charging and Setup:

1. Plug the charging/data cable into your PC.
2. Plug the extension adapter and receiver into the charging/data cable.
3. Turn on the mouse.

Configuring Mouse Settings:

To adjust settings like DPI or report rate:

1. Download the G HUB software from logitechG.com/GHUB.
2. Install and open the software to configure your mouse settings.

Installing Optional Grip Tape :

1. Clean the surface of the mouse with the provided cloth to remove any oil or dust.
2. Carefully align and apply the optional grip tape to the mouse surfaces for improved grip and comfort.

Storing USB Receiver:

To store the USB receiver inside the mouse:

1. Remove the POWERPLAY aperture door.
2. Insert the USB receiver inside the mouse for safekeeping.

Wireless Performance:

1. For optimal wireless performance:
2. Use the mouse within 20cm of the receiver.
3. Keep the mouse greater than 2m away from sources of 2.4GHz interference like wifi routers.

FAQ:

- **Q: How do I change the DPI settings on the Pro X Superlight 2 DEX mouse?**

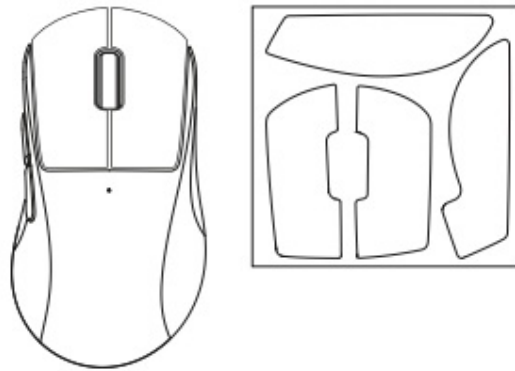
A: You can adjust DPI settings using the G HUB software. Download the software from logitechG.com/GHUB, install it, and navigate to the settings to customize your DPI preferences.

- **Q: Can I use the mouse with the Logitech G POWERPLAY wireless charging system?**

A: Yes, you can use the mouse with the Logitech G POWERPLAY system. Simply remove the POWERPLAY aperture door to store the USB receiver inside the mouse for uninterrupted usage.

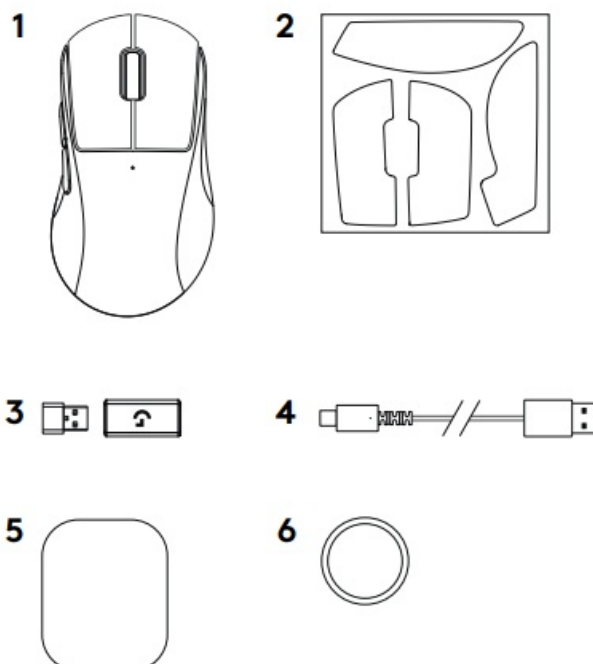
PRO X SUPERLIGHT 2 DEX
SETUP GUIDE

IN THE BOX



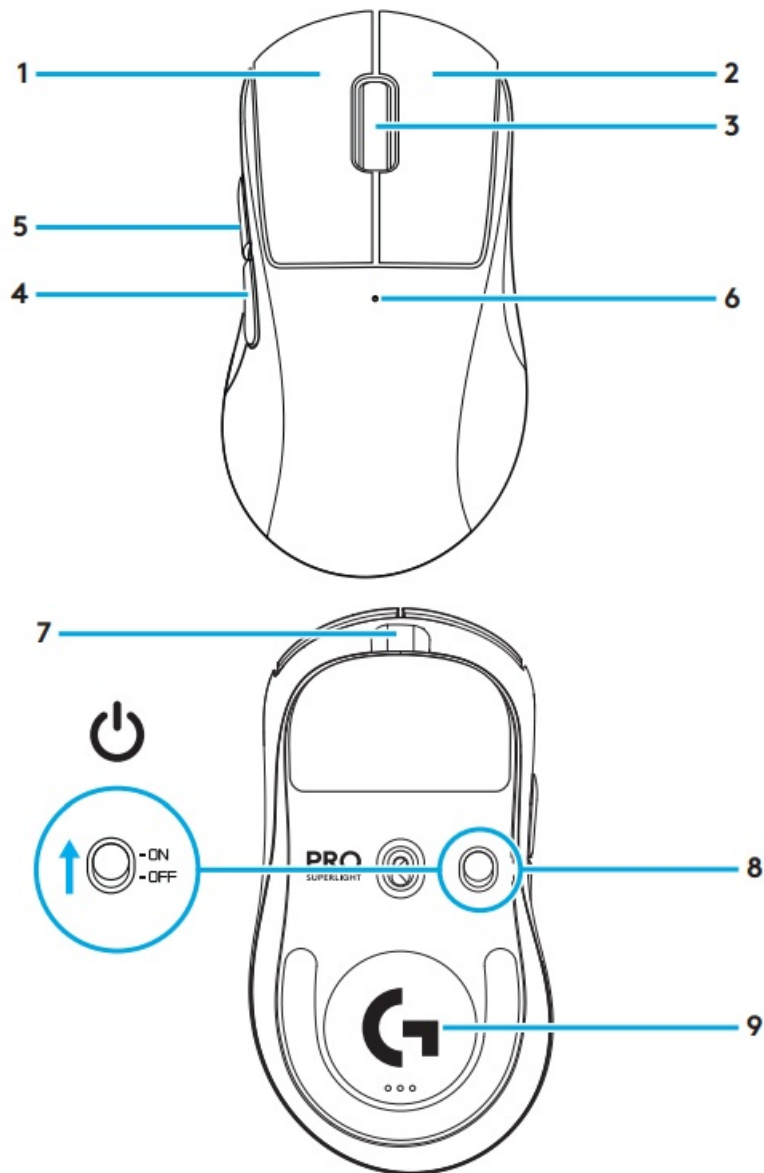
PACKAGE CONTENTS

1. Mouse
2. Optional grip tape
3. Receiver (installed in extension adapter) 4 USB charging and data cable
4. Surface preparation cloth
5. Optional POWERPLAY aperture door with PTFE foot



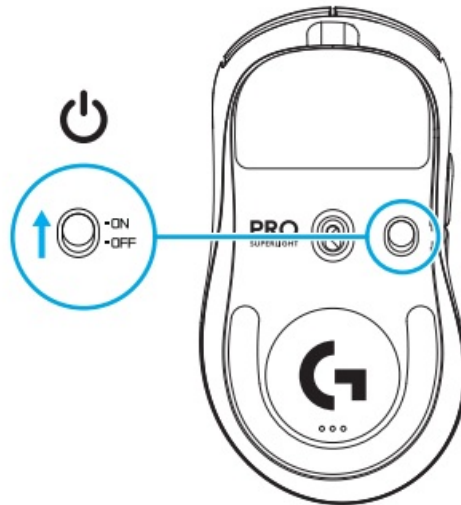
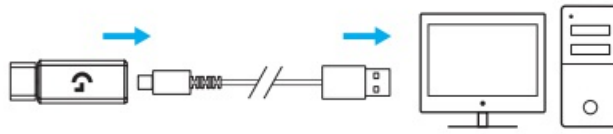
MOUSE FEATURES

1. Left Click
2. Right Click
3. Middle Click/Scroll
4. Browser Back
5. Browser Forward
6. Power LED
7. USB charging/data port
8. POWERPLAY Aperture door

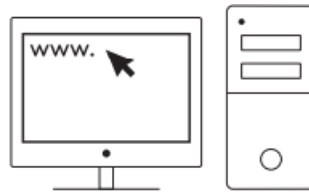


SETUP

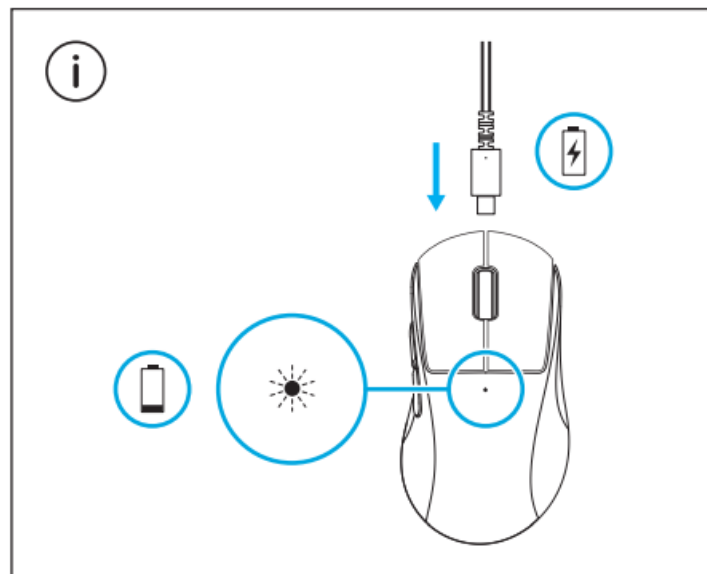
1. Plug charging/data cable into PC, then plug extension adapter and receiver into charging/data cable
2. Turn on mouse



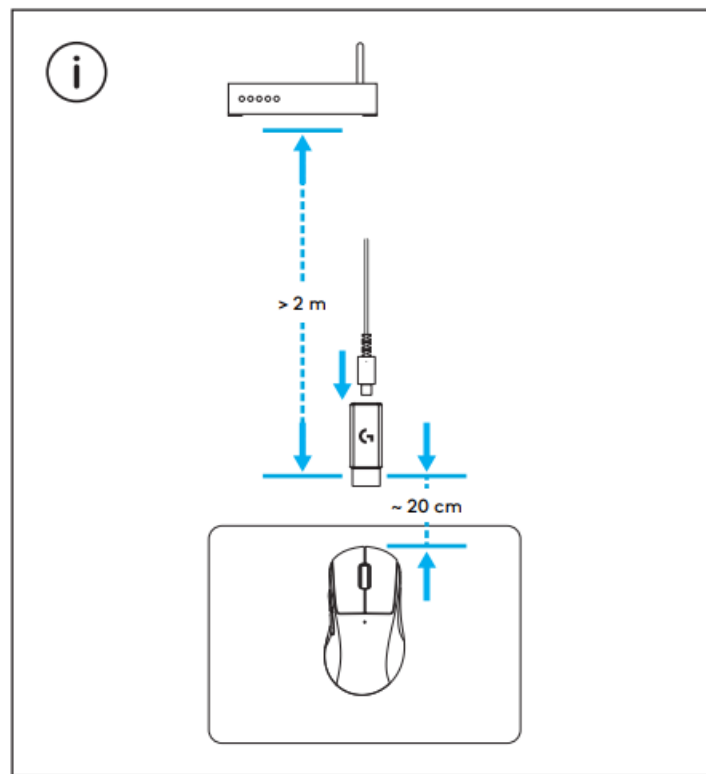
3. To configure mouse settings like DPI or report rate, download G HUB software from logitechG.com/GHUB



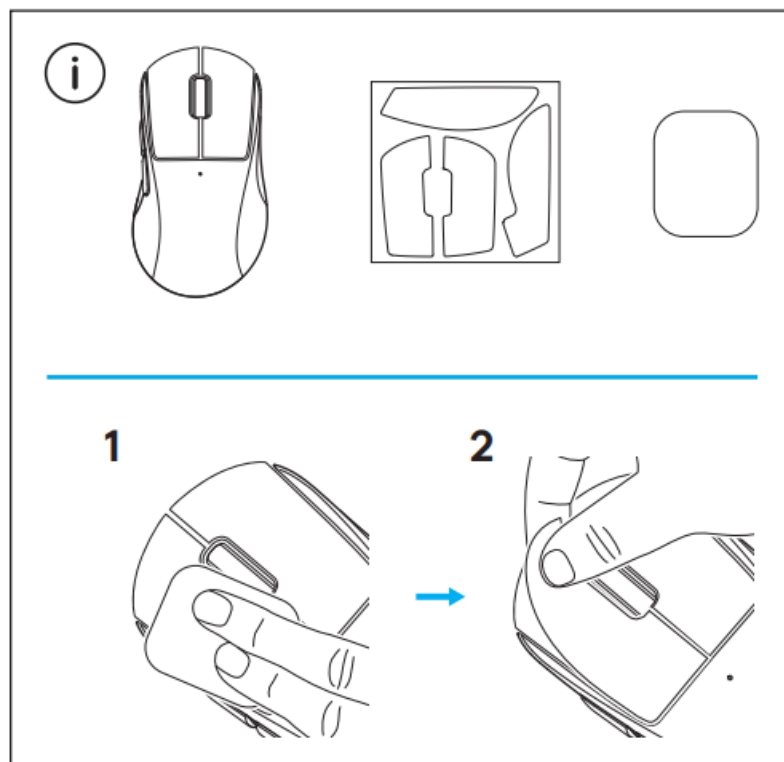
logitechG.com/ghub



- For optimal wireless performance, use mouse within 20cm of receiver and greater than 2m from sources of 2.4GHz interference (such as wifi routers).

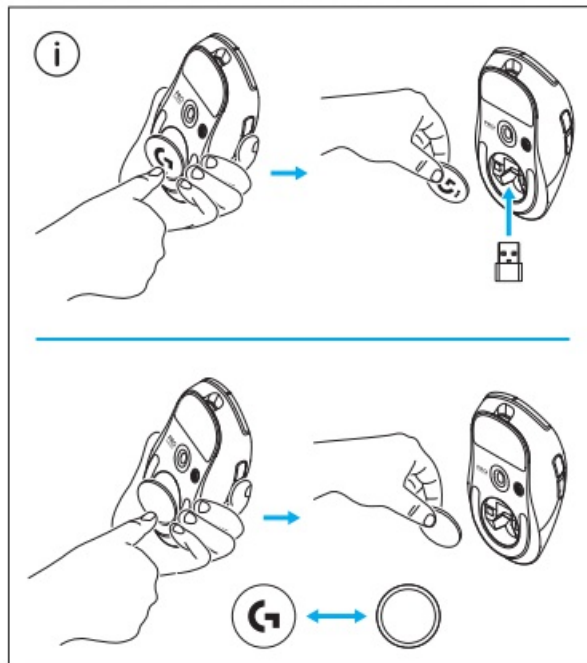


- To install optional grip tape, first clean surface of mouse with provided surface preparation cloth to remove any oil or dust. Then, carefully align grip tape to mouse surfaces.



- The USB receiver can be stored inside the mouse by removing the POWERPLAY aperture door. This can prevent the receiver from being lost when using the mouse with the Logitech G POWERPLAY wireless charging system.

Removing this door also allows the included, optional aperture door with PTFE foot to be installed instead of the default aperture door.



2024 Logitech. Logitech, Logitech G, their respective logos, POWERPLAY and LIGHTSPEED are trademarks or registered trademarks of Logitech Europe S.A. and/or its affiliates in the U.S. and other countries. USB-C is a trademark of USB Implementers Forum. All other trademarks are the property of their respective owners. Logitech assumes no responsibility for any errors that may appear in this manual. Information contained herein is subject to change without notice.

WEB-621-002583 002

Documents / Resources



[logitech Pro X Superlight 2 DEX Lightspeed](#) [pdf] User Guide

Pro X Superlight 2 DEX Lightspeed, Pro X, Superlight 2 DEX Lightspeed, 2 DEX Lightspeed, Lightspeed

References

- [Logitech G HUB Advanced Gaming Software, RGB & Game Profiles](#)
- [User Manual](#)

[Manuals+](#), [Privacy Policy](#)

This website is an independent publication and is neither affiliated with nor endorsed by any of the trademark owners. The "Bluetooth®" word mark and logos are registered trademarks owned by Bluetooth SIG, Inc. The "Wi-Fi®" word mark and logos are registered trademarks owned by the Wi-Fi Alliance. Any use of these marks on this website does not imply any affiliation with or endorsement.