



logitech POWERPLAY Wireless Charging System User Guide

[Home](#) » [Logitech](#) » logitech POWERPLAY Wireless Charging System User Guide

logitech POWERPLAY Wireless Charging System User Guide

POWERPLAY

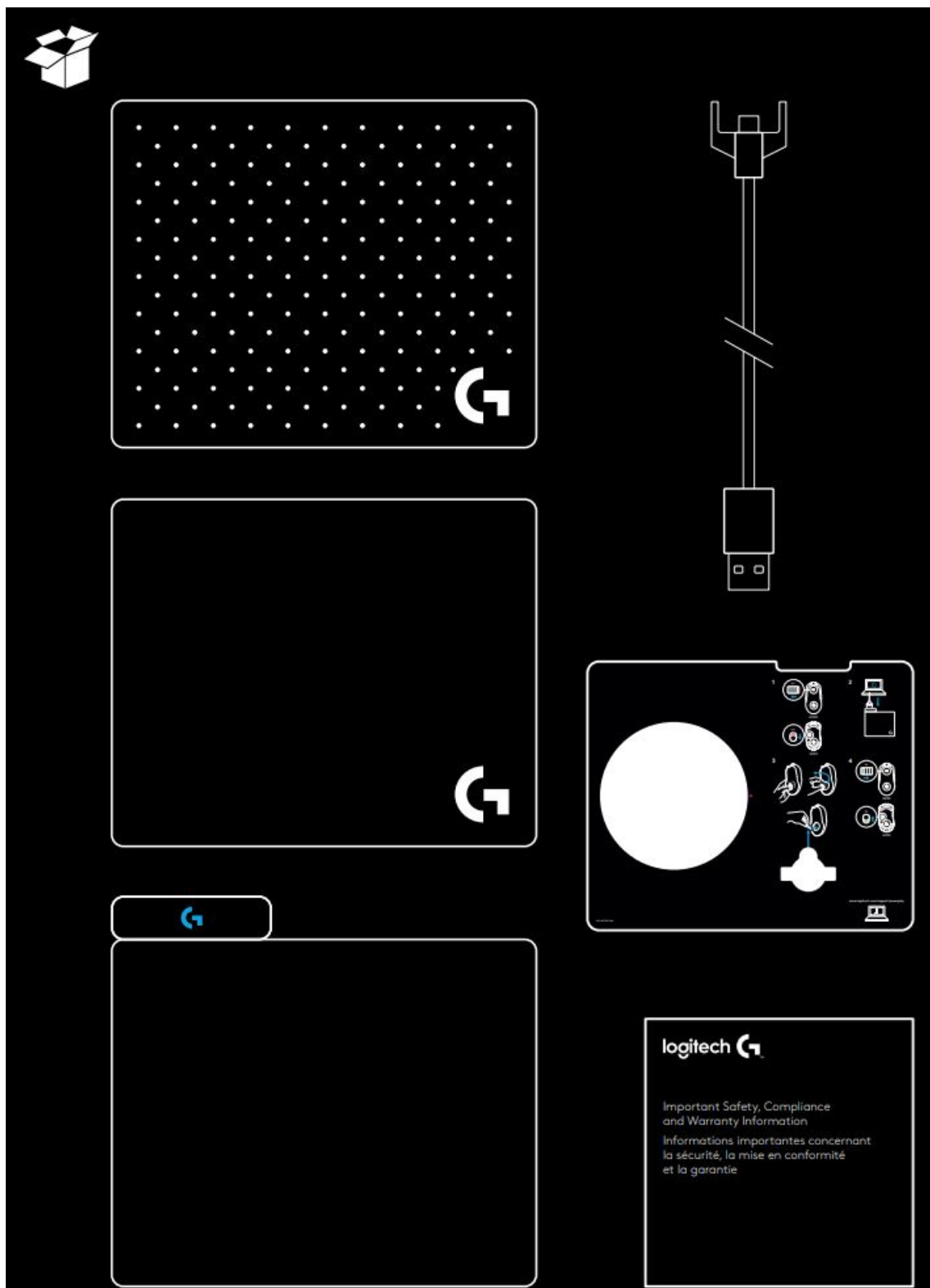
Wireless Charging System
Système de charge sans fil

SETUP GUIDE | GUIDE D'INSTALLATION



logitech G

www.logitech.com/support/powerplay



Contents [[hide](#)]

[1 SETUP INSTRUCTIONS](#)

[2](#)

[FAQ/TROUBLESHOOTING](#)

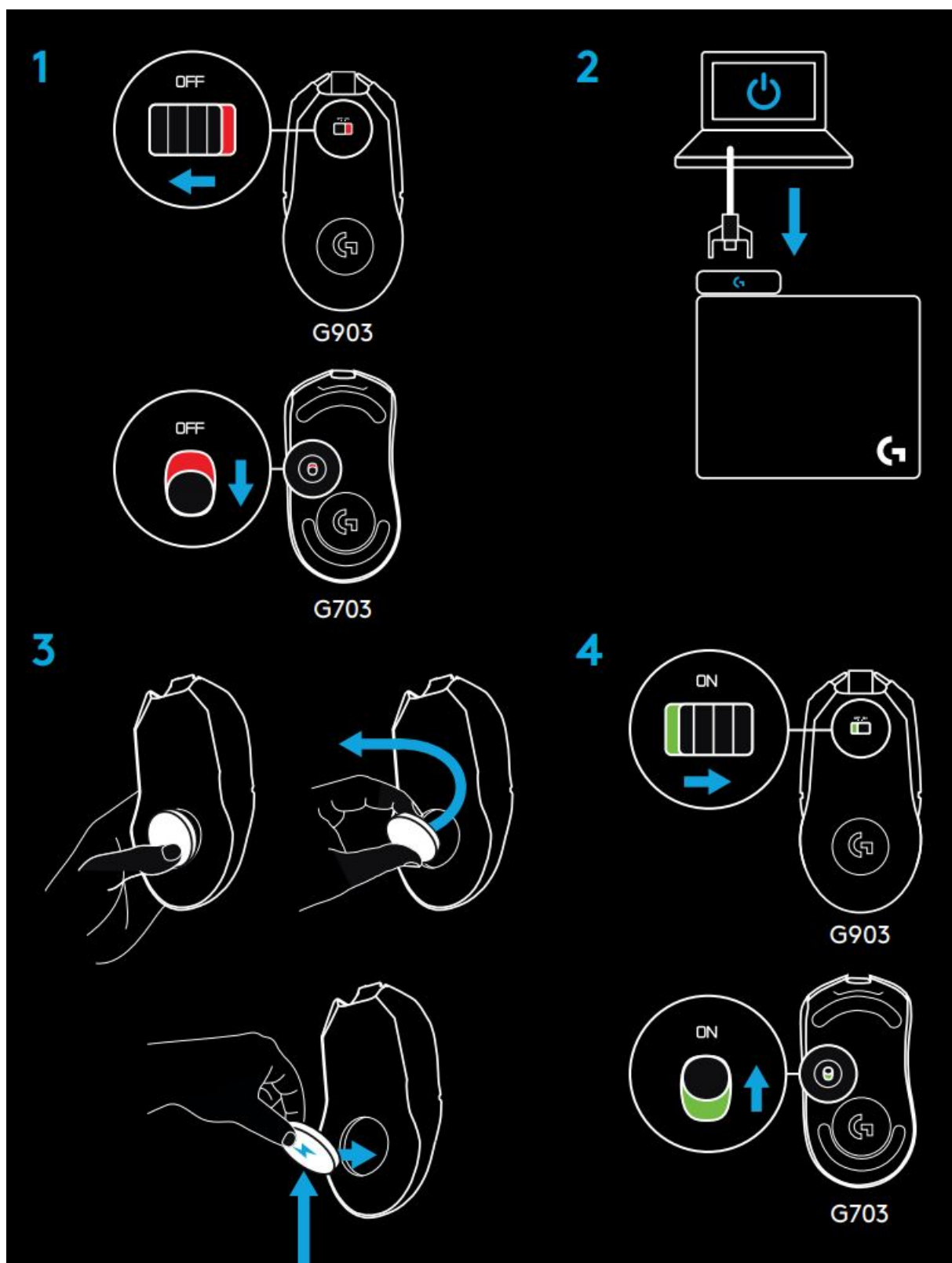
[3 QUESTIONS](#)

[4 Documents / Resources](#)

[4.1 References](#)

[5 Related Posts](#)

SETUP INSTRUCTIONS



1. Turn off mouse
2. Plug in charging base
3. Replace weight module with POWERCORE charging module
4. Turn mouse on

FAQ/TROUBLESHOOTING

G logo on POWERPLAY control box does not illuminate

– Ensure USB cable is firmly connected directly to PC and POWERPLAY control box, or to a powered USB hub

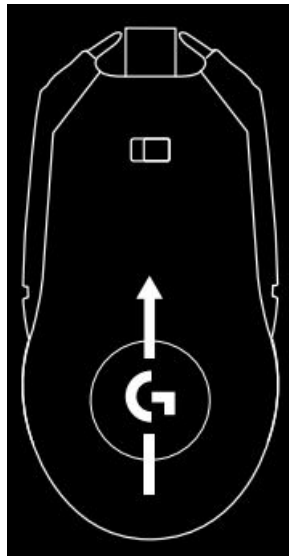
G logo on POWERPLAY control box continuously flashes blue while plugged into PC

— LED flashing blue indicates mouse is not paired to the integrated LIGHTSPEED wireless receiver in POWERPLAY control box Turn mouse off, wait three seconds, and turn it back on Mouse and integrated LIGHTSPEED wireless receiver should pair automatically

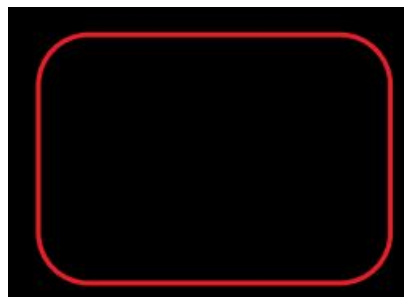
— If mouse has been previously paired to another POWERPLAY charging base, ensure that the mouse's included Nano receiver is not plugged in Then turn mouse off, wait three seconds, and turn it back on Mouse and integrated LIGHTSPEED wireless receiver should pair automatically

Mouse does not charge or power on, white LED on POWERPLAY control box does not turn on

— Ensure POWERCORE module is properly inserted in compatible wireless gaming mouse (G703 or G903 wireless gaming mouse) magnets should connect firmly and G logo should be oriented as shown



- If POWERPLAY is placed on a metal table, charging performance may be degraded or prevented entirely Do not use on a metal table
- Ensure there are no foreign objects (e g keyboards or mobile phones) on charging base Charging performance may be degraded or prevented entirely
- Ensure POWERCORE module is positioned inside charging area (see diagram below) when not in use



Field size and shape is approximate

- Ensure only one POWERCORE module is located on charging base – POWERPLAY charging base produces only enough power to charge one device at a time
- Ensure mouse battery is not removed POWERPLAY charging base cannot power a mouse with no battery Removing the battery from a G703 or G903 wireless gaming mouse voids its warranty
- If mouse battery is at 0%, it may take up to 5 minutes for adequate charge to be built up for use For faster charging, or to charge to 100%, plug included USB cable into mouse
- POWERPLAY charging base is validated for use only with included cloth or hard mouse pad, or their retail replacement equivalent Thicker pads or pads made of different materials (such as metal) can cause charging performance to be degraded or prevented entirely

Battery does not charge to 100%

— This is by design, and is intended to minimize power emission and optimize battery cycles Mouse battery level will be maintained between 85% and 95% while powered by the POWERPLAY charging base

White LED goes dim or turns off

— The white LED indicates three states: no connection between POWERPLAY and POWERCORE (LED off), connection between POWERPLAY and POWERCORE, but charging is not active (LED dim white), and connection between POWERPLAY and POWERCORE with charging active (LED bright white)

Can I use a different USB cable than the supplied one?

— No POWERPLAY is designed to be used with the included USB cable only

Can I physically modify the POWERPLAY charging base?

— No Do not cut, fold, roll, bend, or otherwise modify POWERPLAY charging base Doing so will void the warranty and may damage the charging coil

QUESTIONS

<http://support.logitech.com/product/POWERPLAY>



© 2017 Logitech All rights reserved Logitech, Logi and other Logitech marks are owned by Logitech and may be registered All other trademarks are the property of their respective owners Logitech assumes no responsibility for any errors that may appear in this manual Information contained herein is subject to change without notice
WEB-621-000823 002

Documents / Resources



[logitech POWERPLAY Wireless Charging System](#) [pdf] User Guide
POWERPLAY Wireless Charging System

References

- [Home - Identity Digital](#)
- [Logitech Support + Download Sustainability Navigation](#)