



logitech PB1 Wireless Gaming Mouse User Manual

[Home](#) » [Logitech](#) » logitech PB1 Wireless Gaming Mouse User Manual 

Contents

- [1 logitech PB1 Wireless Gaming Mouse](#)
- [2 Overview](#)
- [3 Specifications](#)
- [4 Features](#)
- [5 Instructions](#)
- [6 What's in the box](#)
- [7 Warranty and Support](#)
- [8 Contact Information](#)
- [9 FAQ](#)
- [10 Documents / Resources](#)
 - [10.1 References](#)
- [11 Related Posts](#)



logitech PB1 Wireless Gaming Mouse



Overview

The POWERPLAY SE is a streamlined wireless charging system designed for gaming enthusiasts. It provides continuous power to your wireless gaming mouse, ensuring uninterrupted gameplay both at play and rest.



Specifications

Print Size	797.51mm x 884.51mm
Trim Size	786.8mm x 873.8mm
Inks	CMY K PMS 425C, Foil Stamp
Finish	Matte PP Laminate overall, Spot Varnish 1: Matte
File Name	PB1 – PDM-650-048192 00B Axii Powerplay SE retail box.ai
Date	16 April 2024
Model Number	920-XXXXXX
Part Number	650-048192 Rev.00B

USE SOY OR VEGETABLE INKS

Inks

C

M

Y

K

PMS 425C

Foil Stamp

Spot Varnish 1: Matte

Dieline (does not print)

Features

- Wireless charging technology for continuous power during play and rest.

A diagram on a dark grey background. At the top left is a white rounded rectangle containing a white 'G' logo. Below it is a white rectangular frame. Inside the frame, on the left, is a battery icon with a lightning bolt, surrounded by three concentric blue circles. A dotted blue line with an arrow at the end points from the battery icon to a white mouse icon on the right. The mouse has a blue 'G' logo on its side.

- Integrated power and connectivity for streamlined application.

A diagram on a dark grey background. It shows a white smartphone on the left and a white mouse on the right, both resting on a white rectangular surface. Three blue curved lines emanate from the smartphone towards the mouse, representing wireless connectivity.

- Use with [Tassadar] and other compatible Logitech G gear.

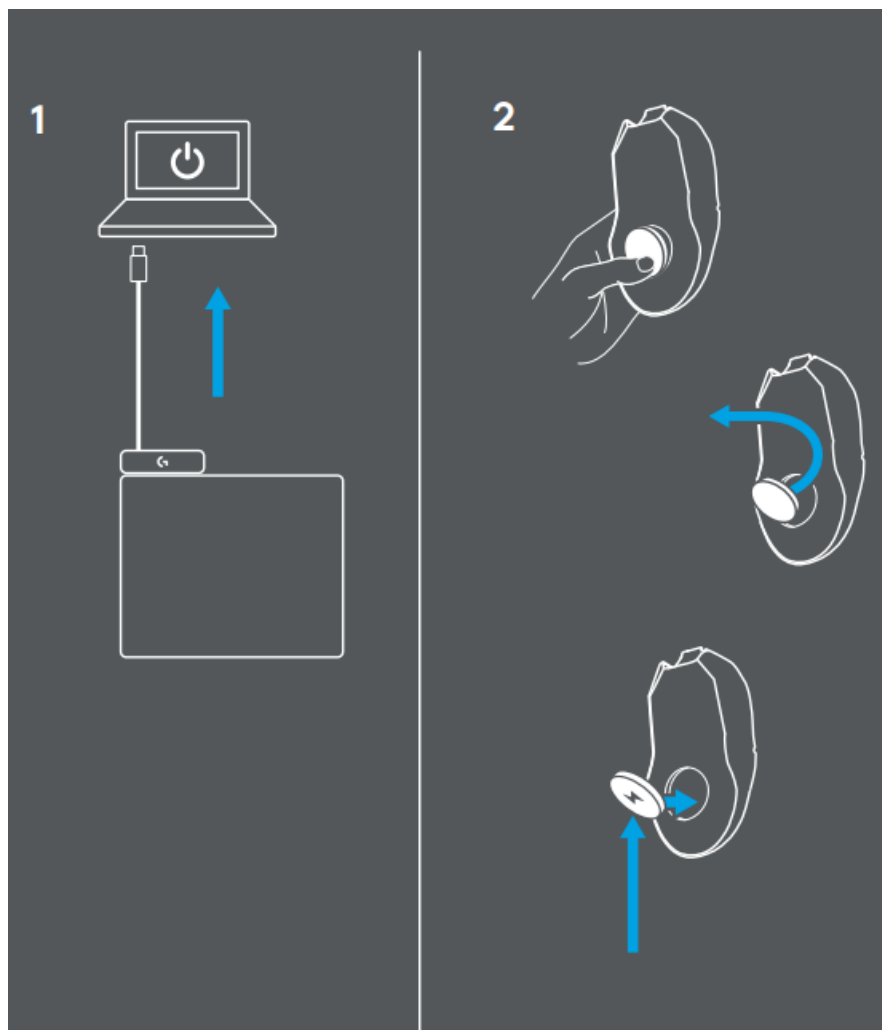


Requirements

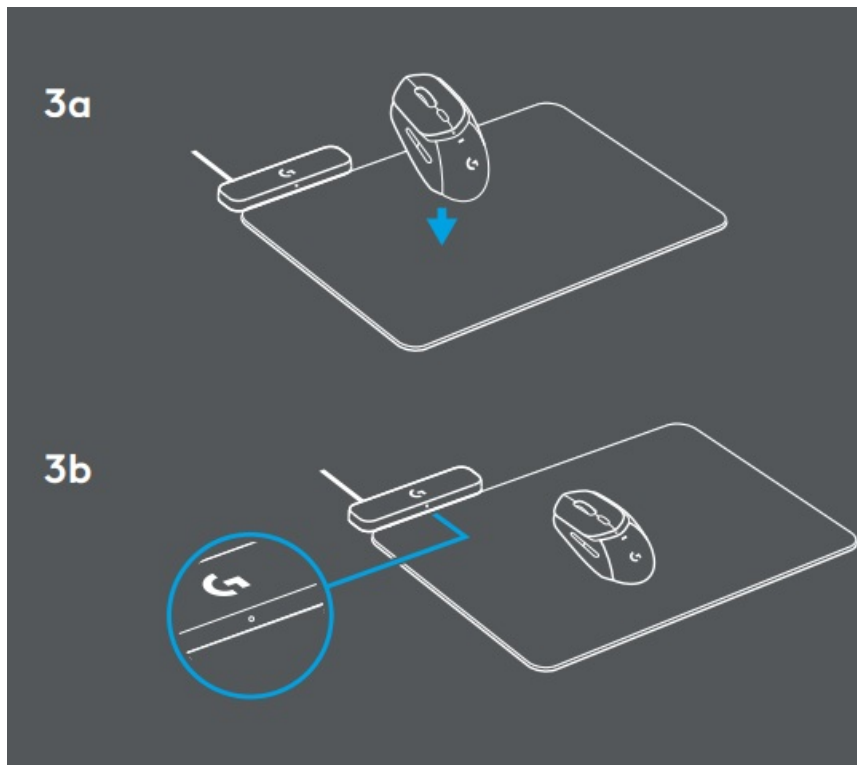
A wireless gaming mouse is required but not included with the POWERPLAY SE system.

Instructions

1. Connect the power cord to the charging system.
2. Ensure the POWERCORE™ module is properly installed in the mouse.



3. Place the mouse on the POWERPLAY mouse pad for charging.



What's in the box

- POWERPLAY™ SE base
- Soft mouse pad
- POWERCORE™ module for compatible wireless mice
- USB data/charging cable
- User documentation

What you need

- Mouse compatible with POWERPLAY™ (sold separately)
- Windows® 10, Windows® 8.1, Windows® 8, or Windows® 7
- 1 powered USB port

2-year limited hardware warranty

Warranty and Support

The product comes with a 2-year limited hardware warranty. For more information, visit [Logitech G](https://www.logitech.com).

Contact Information

- Logitech, 3930 North First Street, San Jose, CA 95134 USA
- NASDAQ: LOGI

Made in China

Images are illustrative and may vary from actual product. © 2024 Logitech. Logitech, Logitech G, Keep Playing,

Powerplay, and their logos are trademarks or registered trademarks of Logitech Europe S.A. and/or its aliases in the U.S. and other countries. All other third party trademarks are the property of their respective owners.

Logitech

- 3930 North First Street
- San Jose, CA 95134 USA
- [logitechG.com](https://www.logitech.com)
- NASDAQ: LOGI
- Pat.: www.logitech.com/patents

FAQ

- **Q: Is the Powerplay SE compatible with all wireless gaming mice?**

A: The Powerplay SE is designed to work with Logitech G gear and other compatible devices. Please refer to the product manual for a list of supported devices.


- **Q: How do I know if the wireless charging technology is active?**

A: The Powerplay SE will indicate when the wireless charging technology is active through LED indicators or on-screen notifications. Ensure your device is properly placed on the mouse pad for charging.

- **Q: Can I use the Powerplay SE without a wireless gaming mouse?**

A: The Powerplay SE is specifically designed for wireless gaming mice that support wireless charging. It is recommended to use it with a compatible device for optimal performance.

Documents / Resources

	logitech PB1 Wireless Gaming Mouse [pdf] User Manual PR0006, JNZPR0006, PB1 - PDM-650-048192 00B, PB1 Wireless Gaming Mouse, PB1, Wireless Gaming Mouse, Gaming Mouse, Mouse
---	---

References

-  [Logitech G - Advanced Gaming Gear for the Ultimate Gaming Setup](#)
- [User Manual](#)

[Manuals+](#), [Privacy Policy](#)

This website is an independent publication and is neither affiliated with nor endorsed by any of the trademark owners. The "Bluetooth®" word mark and logos are registered trademarks owned by Bluetooth SIG, Inc. The "Wi-Fi®" word mark and logos are registered trademarks owned by the Wi-Fi Alliance. Any use of these marks on this website does not imply any affiliation with or endorsement.