

logitech
O7Q006A-WM Keyboard
and Mouse



Logitech O7Q006A-WM Keyboard and Mouse User Manual

[Home](#) » [Logitech](#) » Logitech O7Q006A-WM Keyboard and Mouse User Manual 

Contents

- [1 Logitech O7Q006A-WM Keyboard and Mouse](#)
- [2 Product Specifications](#)
- [3 Installation & Connection](#)
- [4 Pairing Instructions](#)
- [5 Usage Instructions](#)
- [6 Maintenance & Care](#)
- [7 Troubleshooting](#)
- [8 Precautions](#)
- [9 FAQs](#)
- [10 Documents / Resources](#)
 - [10.1 References](#)

logitech

Logitech O7Q006A-WM Keyboard and Mouse



Product Specifications

- Model: 9SP135A-BL/IXQ017A-WM/J7Q003A-WM/O7Q006A-WM
- Included: 1pc 2.4G keyboard, 1pc 2.4G mouse, 1pc mouse pad
- Power Supply: Keyboard – 2 AAA batteries (not included), Mouse – 1 AA battery (not included)

Basic information

- Button working current: Max 6mA
- Sleep mode: 10 minutes after no action
- Wake up: Push to wake up
- Sleep current: 0.1mA
- Applicable equipment/system: Windows/7/8/10

Installation & Connection

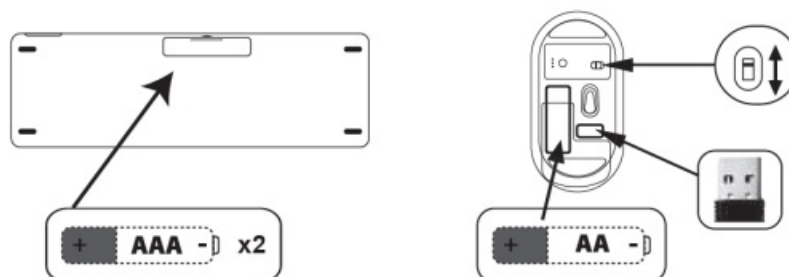
Step 1: Install Batteries

Keyboard:

Open the battery compartment cover on the bottom. Insert 2 new AAA batteries according to the polarity markings (+/-).

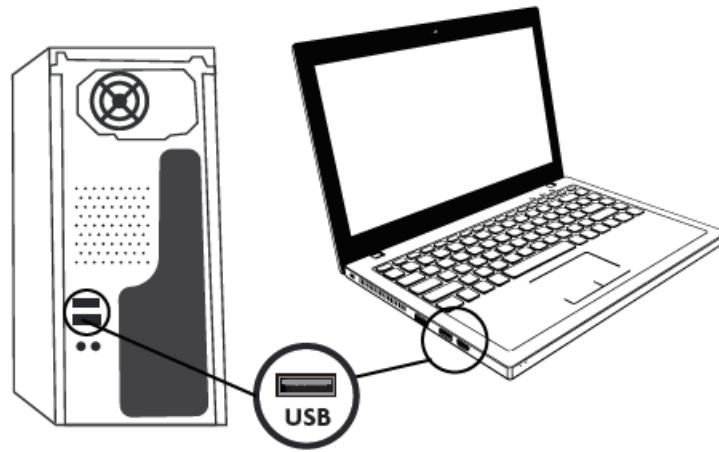
Mouse:

Open the battery compartment cover on the bottom. Insert 1 new AA battery according to the polarity markings (+/-). Remove the USB receiver from its storage slot.



Step 2: Connect the Receiver

Insert the USB receiver into a USB port on your computer (for optimal signal stability, use a rear USB port to minimize interference).



Step 3: Power On the Devices

Keyboard:

Turn on the power switch (ON/OFF) located on the top-right side of the keyboard.

Mouse:





Turn on the power switch (ON/OFF) located on the bottom of the mouse.

Pairing Instructions

Plug the USB receiver into the USB port on your computer to use it. If the product does not work properly after inserting the receiver, please follow these steps to pair the keyboard: Press and hold the ESC + Q keys simultaneously for 3 seconds. The signal indicator on the top right will slowly flash green. Unplug the USB receiver, then reinsert it into the USB port to complete the pairing.

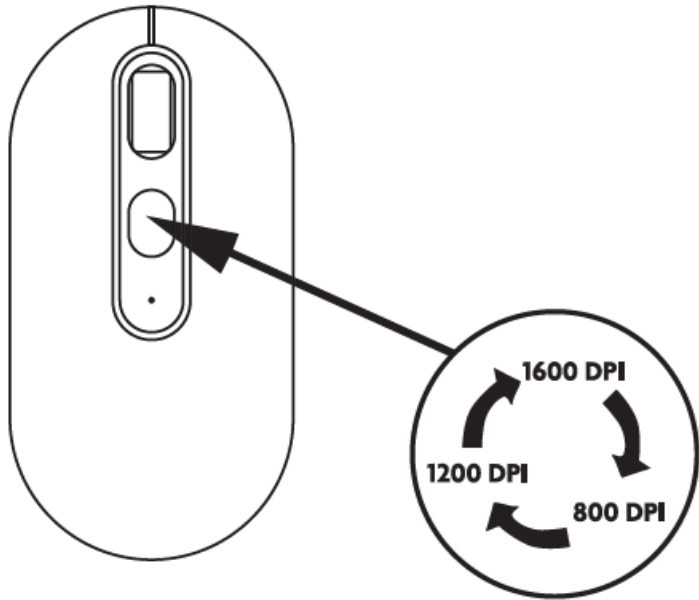
Usage Instructions

• Keyboard Functions

- F1: Mute
- F2: Volume
- F3: Volume +
- F4: Previous Track
- F5: Play/Pause
- F6: Next Track
- F7: Screen Brightness - F8: Screen Brightness + F9: Select All
- F10: Copy
- F11: Paste
- F12: Cut
-  : Calculator
-  : Refresh the page
-  : Search
-  : Lock Screen

Mouse Functions

- **Basic Operations:**
 - Left-click: Select/Confirm
 - Right-click: Open menu
 - Scroll wheel: Scroll up/down or press (middle button function)
- **DPI Switching:** Press the DPI button on the top to adjust cursor speed across 3 levels: 800DPI / 1200DPI / 1600DPI.



Maintenance & Care

- **Cleaning:**
Wipe the surface with a dry cloth. Avoid liquid contact.
- **Battery Management:**
Remove batteries if unused for extended periods to prevent leakage.

Troubleshooting

Issue&Solution

- No connection: 1. Ensure the receiver is firmly inserted. 2. Restart the device.
- Lagging/Unresponsive: 1. Use closer to the receiver. 2. Avoid wireless interference.
- Keys/clicks unresponsive: 1. Replace batteries. 2. Clean key/button contacts.
- Lost receiver: Buy a new compatible replacement.

Issue	Solution
No connection	1. Ensure the receiver is firmly inserted. 2. Restart the device.

Precautions

- Do not use in high-temperature, humid, or strong magnetic environments.

- Avoid putting heavy pressure or dropping it.
- Dispose of used batteries per local environmental regulations.
- Questions? Comments?
 - contact@culturefly.com
- Do not mix old and new batteries
- Do not mix alkaline, standard (carbon-zinc), or rechargeable (Ni-Cad, Ni-MH, etc.) batteries.

FCC Statement

47 CFR Part 15 – Changes or modifications not expressly approved by the party responsible for compliance could void the user's authority to operate this device.

This device complies with part 15 of the FCC Rules. Operation is subject to the following two conditions: (1) This device may not cause harmful interference, and (2) this device must accept any interference received, including interference that may cause undesired operation.

This device has been tested and found to comply with the limits for a Class B digital device under Part 15 of the FCC Rules. These limits are designed to provide reasonable protection against harmful interference in a residential installation. This device generates, uses, and can radiate radio frequency energy and, if not installed and used according to the instructions, may cause harmful interference to radio communications.

However, there is no guarantee that interference will not occur in a particular installation. If this device does cause harmful interference to radio or television reception, which can be determined by turning the device off and on, the user is encouraged to try to correct the interference by one or more of the following measures:

- Reorient or relocate the receiving antenna.
- Increase the separation between the device and the receiver.
- Connect the device into an outlet on a circuit different from that to which the receiver is connected.
- Consult the dealer or an experienced radio/TV technician for help

Changes or modifications not expressly approved by the party responsible for compliance could void the user's authority to operate the equipment

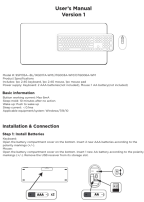
- **Receiver:** FCC ID: 2A2WN-JSQ33
- **Keyboard:** FCC ID: 2A2WN-JP220
- **Mouse:** FCC ID: 2A2WN-SB220

FAQS

Q: What should I do if my mouse cursor is not moving smoothly?

A: Check the surface you are using the mouse on. A mouse pad or a smooth surface is recommended for optimal performance.

Documents / Resources

	<p>Logitech O7Q006A-WM Keyboard and Mouse [pdf] User Manual</p> <p>9SP135A--BL, IXQ017A-WM, J7Q003A-WM, O7Q006A-WM, O7Q006A-WM Keyboard and Mouse, O7Q006A-WM, Keyboard and Mouse</p>
---	---

References

- [User Manual](#)

Manuals+, Privacy Policy

This website is an independent publication and is neither affiliated with nor endorsed by any of the trademark owners. The "Bluetooth®" word mark and logos are registered trademarks owned by Bluetooth SIG, Inc. The "Wi-Fi®" word mark and logos are registered trademarks owned by the Wi-Fi Alliance. Any use of these marks on this website does not imply any affiliation with or endorsement.