



logitech MXANYWHERE2 Wireless Mobile Mouse Instruction Manual

[Home](#) » [Logitech](#) » logitech MXANYWHERE2 Wireless Mobile Mouse Instruction Manual 

Contents

- [1 logitech MXANYWHERE2 Wireless Mobile Mouse](#)
- [2 Gesture button with Logitech Options software](#)
- [3 Battery disposal](#)
- [4 Dual connectivity](#)
- [5 Easy-Switch™](#)
- [6 Documents / Resources](#)
- [7 Related Posts](#)

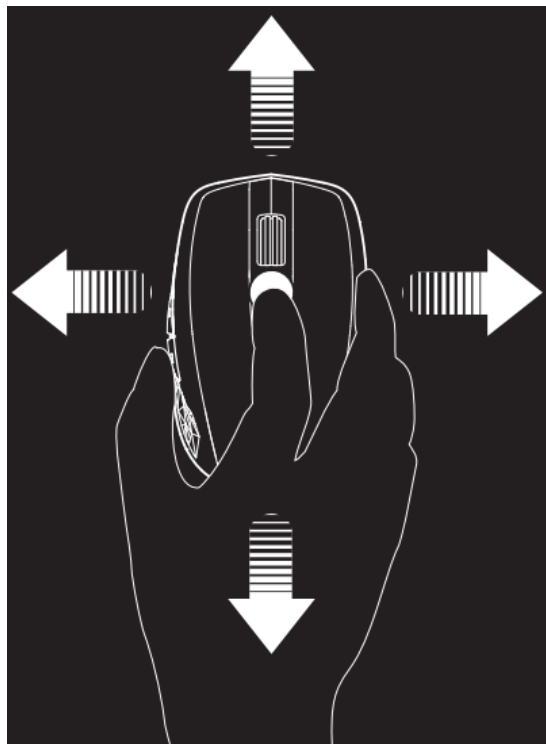


logitech MXANYWHERE2 Wireless Mobile Mouse

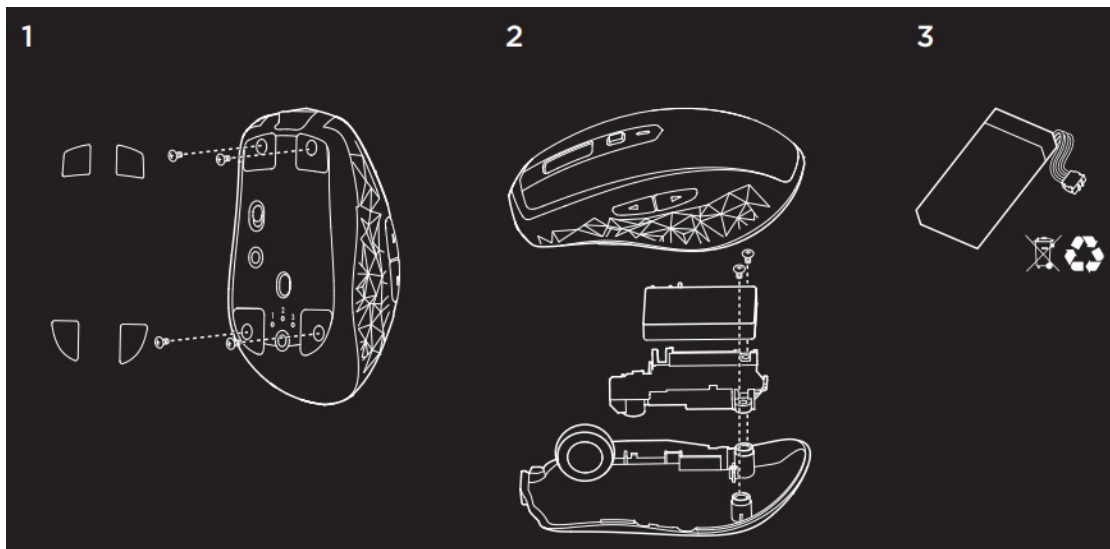


Gesture button with Logitech Options software

- By holding down the gesture button and moving the mouse, you can trigger 4 different navigation controls, optimised for the operating system you use.
- Those gestures, and much more possibilities, are enabled by the Logitech Options software, available on: www.logitech.com/download/MXAnywhere2



Battery disposal

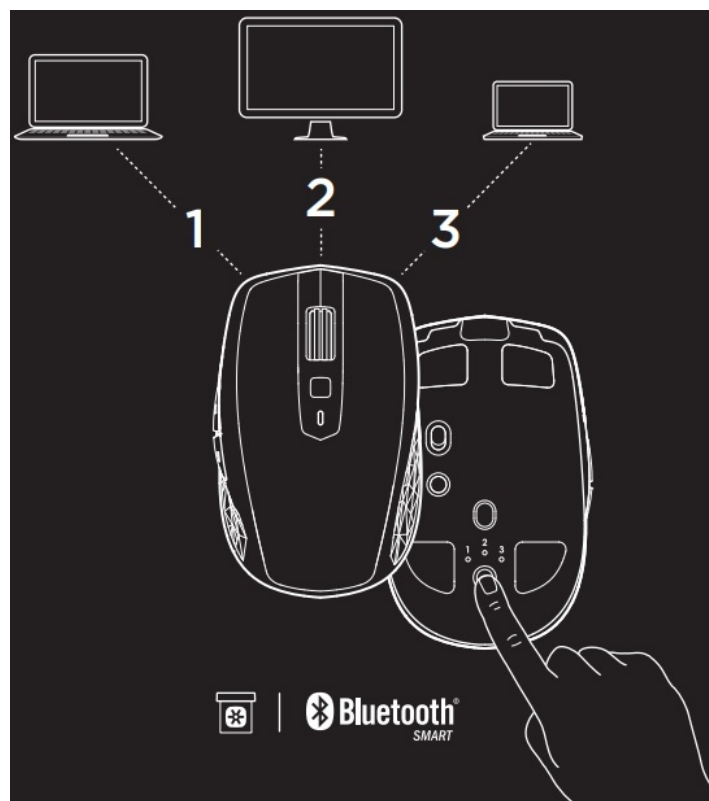


Dual connectivity

Connect via included Logitech Unifying™ receiver or via Bluetooth® Smart.

Easy-Switch™

Pair up to 3 devices and easily switch between them with the press of a button.



WEB: www.logitech.com/MXAnywhere2

© 2015 Logitech. All rights reserved. Logitech, the Logitech logo, and other Logitech marks are owned by Logitech and may be registered. All other trademarks are the property of their respective owners. Logitech assumes no responsibility for any errors that may appear in this manual. Information contained herein is subject to change without notice.

Documents / Resources



[logitech MXANYWHERE2 Wireless Mobile Mouse](#) [pdf] Instruction Manual
MXANYWHERE2 Wireless Mobile Mouse, MXANYWHERE2, Wireless Mobile Mouse, Mobile Mouse, Mouse