

logitech
MR0115
SUPERLIGHT
2 DEX Mouse



logitech MR0115 SUPERLIGHT 2 DEX Mouse User Guide

[Home](#) » [Logitech](#) » logitech MR0115 SUPERLIGHT 2 DEX Mouse User Guide 

Contents

- [1 logitech MR0115 SUPERLIGHT 2 DEX Mouse](#)
- [2 Product Specifications](#)
- [3 Product Usage Instructions](#)
- [4 Frequently Asked Questions \(FAQ\)](#)
- [5 CONNECTION INSTRUCTION](#)
- [6 APPLYING PROTECTION LAYER](#)
- [7 USING INSTRUCTION](#)
- [8 ABOUT COMPANY](#)
- [9 Documents / Resources](#)
 - [9.1 References](#)



logitech MR0115 SUPERLIGHT 2 DEX Mouse



Product Specifications

- **Model:** PRO SUPERLIGHT
- **Dimensions:** 2m ~ 20cm
- PTFE coating for smooth movement
- TA 2022-3452 Approved
- **Model Number:** MR0115

Product Usage Instructions

Setup Guide

Follow the steps below to set up your PRO SUPERLIGHT:

1. Visit logitechG.com/ghub to download the required software.
2. Connect the device to your computer using the provided cable.
3. Visit logitechG.com/support/pro-x-superlight-dex for additional setup instructions.

Using the Mouse

To use the mouse effectively:

- Ensure the PTFE coating is in good condition for smooth movement.
- Customize settings using the software downloaded in step 1 of the setup guide.
- Refer to the user manual for advanced features and customization options.

Frequently Asked Questions (FAQ)

- **What is the recommended maintenance for the PRO SUPERLIGHT mouse?**

To maintain optimal performance, regularly clean the mouse sensor and ensure the PTFE coating is free from debris.

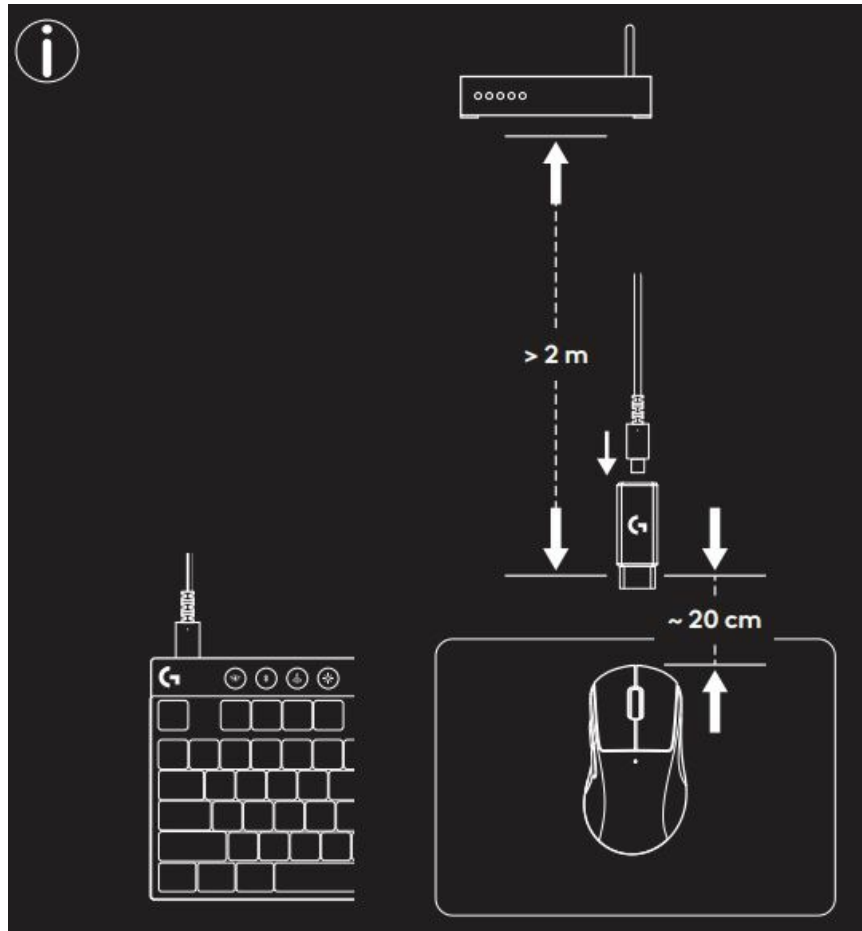
- **Can I adjust the DPI settings of the mouse?**

Yes, DPI settings can be adjusted using the software provided on logitechG.com/ghub.

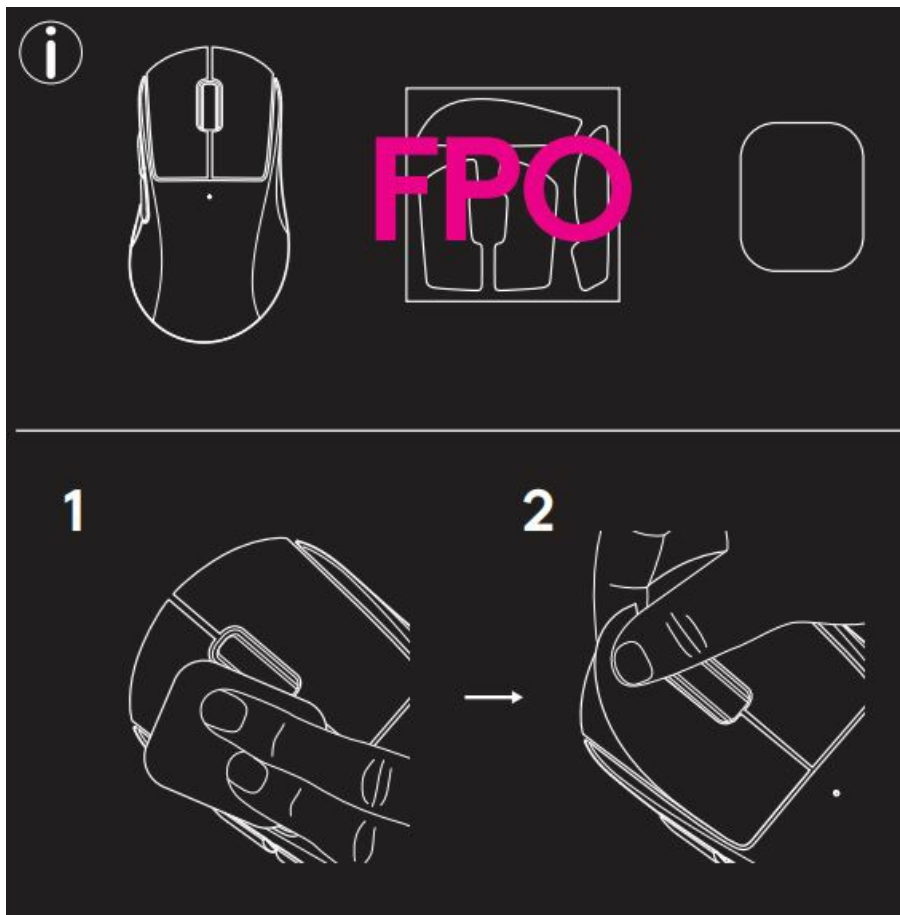
- **Is the PRO SUPERLIGHT compatible with both Windows and Mac operating systems?**

Yes, the mouse is compatible with both Windows and Mac OS. Ensure you download the correct software version for your operating system.

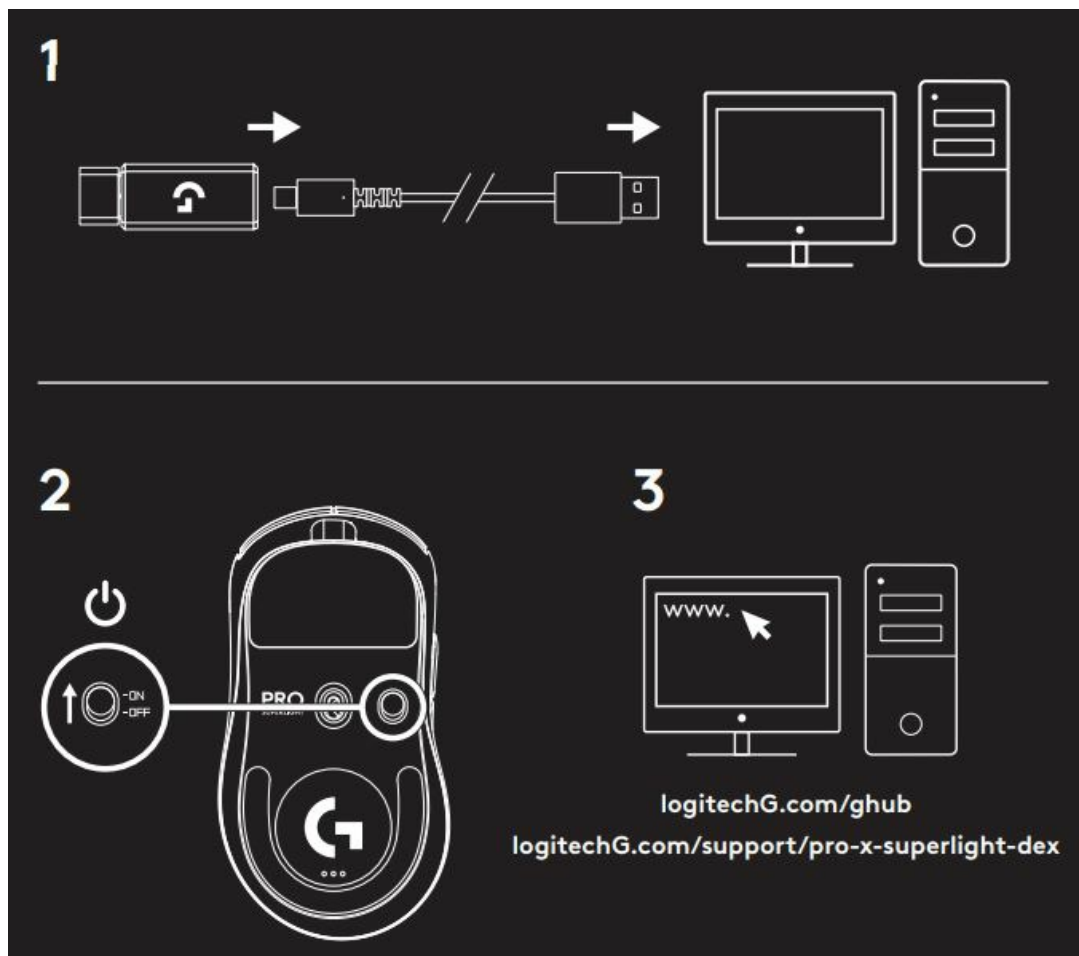
CONNECTION INSTRUCTION

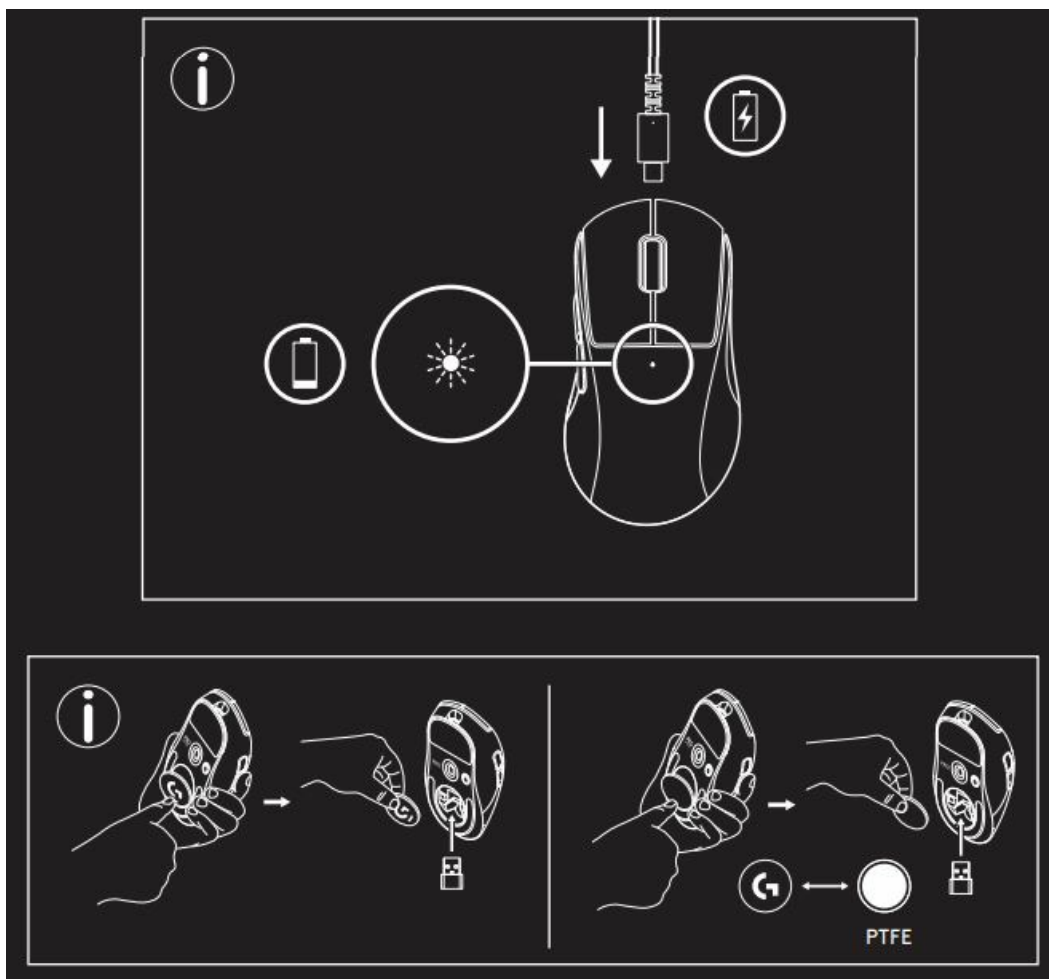


APPLYING PROTECTION LAYER



USING INSTRUCTION






ABOUT COMPANY

©2024 Logitech. Logitech, Logitech G, and their logos, and the Certified Carbon Neutral logo, are trademarks or registered trademarks of Logitech Europe S.A. and/or its affiliates in the U.S. and other countries. All other trademarks are property of their respective owners.

Documents / Resources

	logitech MR0115 SUPERLIGHT 2 DEX Mouse [pdf] User Guide MR0115 SUPERLIGHT 2 DEX Mouse, MR0115, SUPERLIGHT 2 DEX Mouse, 2 DEX Mouse, Mouse
-------------------------------------------------------------------------------------	--------------------------------------------------------------------------------------------------------------------------------------------------------------

References

- [User Manual](#)

Manuals+. [Privacy Policy](#)

This website is an independent publication and is neither affiliated with nor endorsed by any of the trademark owners. The "Bluetooth®" word mark and logos are registered trademarks owned by Bluetooth SIG, Inc. The "Wi-Fi®" word mark and logos are registered trademarks owned by the Wi-Fi Alliance. Any use of these marks on this website does not imply any affiliation with or endorsement.