



Logitech MK370 COMBO Wireless Keyboard and Mouse Instruction Manual

[Home](#) » [Logitech](#) » Logitech MK370 COMBO Wireless Keyboard and Mouse Instruction Manual 

Contents

- [1 Logitech MK370 COMBO Wireless Keyboard and Mouse](#)
- [2 Product Information](#)
- [3 Product Usage Instructions](#)
- [4 WHAT'S IN THE BOX](#)
- [5 HOW TO USE](#)
- [6 Documents / Resources](#)
 - [6.1 References](#)



Logitech MK370 COMBO Wireless Keyboard and Mouse



Product Information

The MK370 COMBO for Business is a keyboard and mouse combo designed for business use. It offers versatile compatibility with different operating systems such as Mac, ChromeOS, and Windows. The product comes with an easy-to-use setup and ergonomic design, providing comfort and efficiency during extended usage periods.

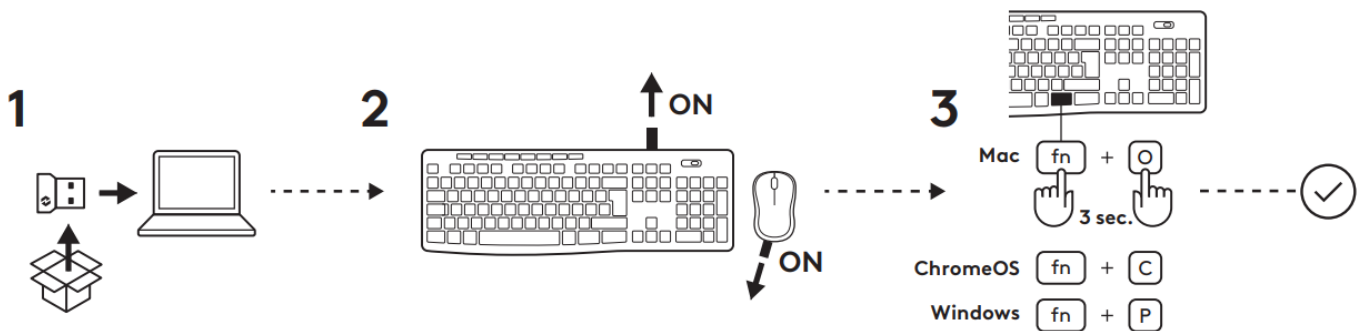
Product Usage Instructions

To use the MK370 COMBO for Business, follow the steps below:

1. Ensure that the keyboard and mouse are turned on.
2. Check the power switch on both the keyboard and mouse and make sure they are set to the “ON” position.
3. For Mac users:
 - Press and hold the “fn” key on the keyboard.
 - Press the “O” key on the keyboard for 3 seconds.
4. For ChromeOS users:
 - Press and hold the “fn” key on the keyboard.
 - Press the “C” key on the keyboard.
5. For Windows users:
 - Press and hold the “fn” key on the keyboard.
 - Press the “P” key on the keyboard.
6. The keyboard and mouse should now be successfully connected to your device.
7. If you encounter any issues or need further assistance, please visit www.logitech.com/support/MK370B.
8. For additional information, refer to the user manual provided with the product (620-012189 002).

MK370 COMBO for Business

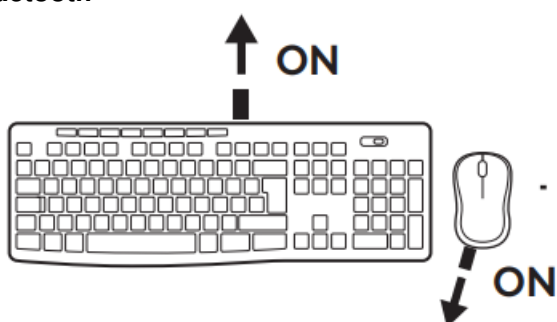
WHAT’S IN THE BOX



HOW TO USE



1



2





[www.logitech.com/](https://www.logitech.com/support/MK370B) support/MK370B

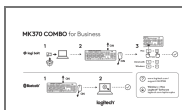


Windows | Mac Logitech® Software [logitech.com/optionsplus](https://www.logitech.com/optionsplus)

© 2023 Logitech, Logi and the Logitech Logo are trademarks or registered trademarks of Logitech Europe S.A. and/or its affiliates in the U.S. and other countries. The Bluetooth® word mark and logos are registered trademarks owned by Bluetooth SIG, Inc. and any use of such marks by Logitech is under license. Logitech assumes no responsibility for any errors that may appear in this manual. Information contained herein is subject to change without notice.


620-012189 002

Documents / Resources



[Logitech MK370 COMBO Wireless Keyboard and Mouse](#) [pdf] Instruction Manual
YR0092, JNZYR0092, JNZYR0092, MK370, MK370 COMBO Wireless Keyboard and Mouse,
Wireless Keyboard and Mouse, Keyboard and Mouse, Mouse

References

-  [Logi Options+ \(Plus\): Customization App for Logitech Devices](#)
-  [Logitech | Official Online Store](#)

[Manuals+](#)