

Logitech MK295 Wireless Mouse And Keyboard Combo



logitech MK295 Wireless Mouse And Keyboard Combo Instruction Manual

[Home](#) » [Logitech](#) » logitech MK295 Wireless Mouse And Keyboard Combo Instruction Manual 

Contents

- [1 Logitech MK295 Wireless Mouse And Keyboard Combo](#)
- [2 HOW TO SET UP](#)
- [3 Specifications](#)
- [4 FAQ](#)
- [5 Documents / Resources](#)
 - [5.1 References](#)
- [6 Related Posts](#)



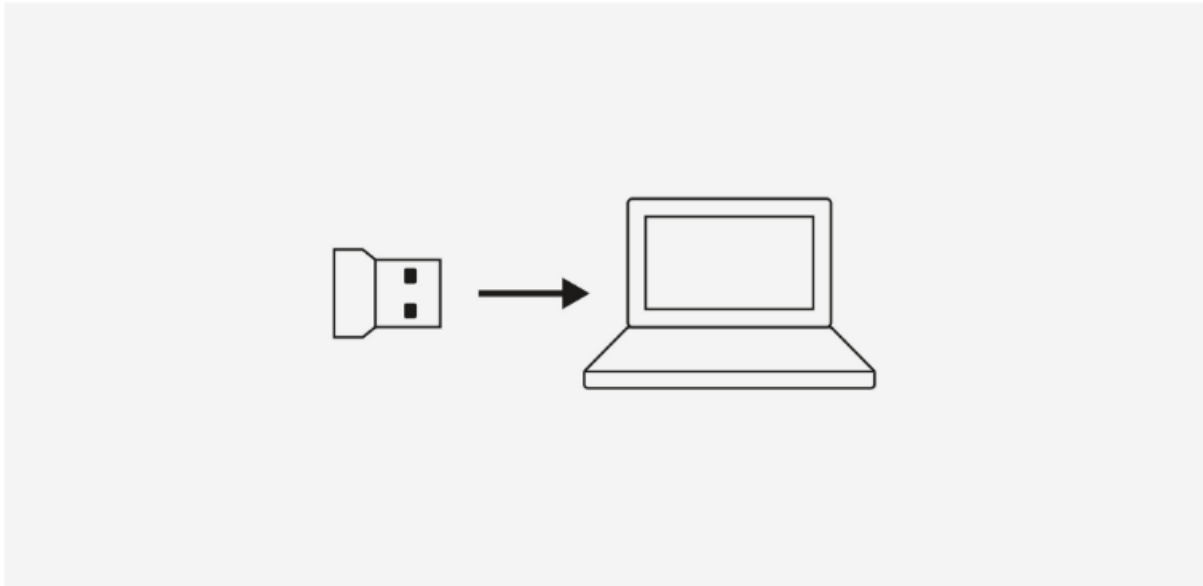
Logitech MK295 Wireless Mouse And Keyboard Combo



HOW TO SET UP

STEP 1

STEP 1



Connect the USB receiver to your PC.

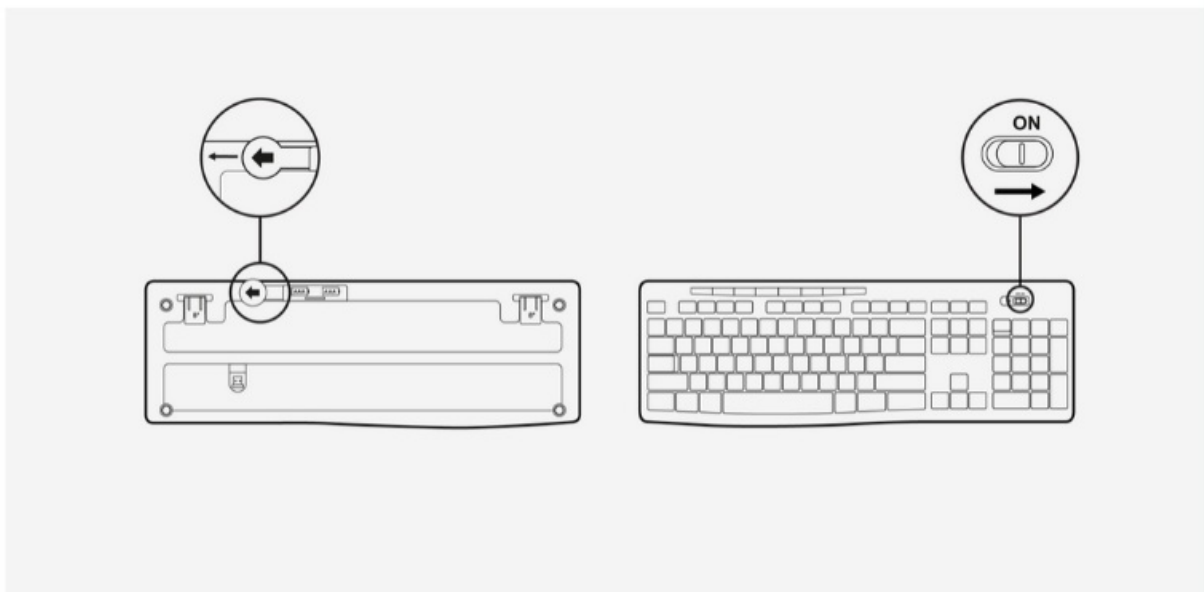
Connect the USB receiver to your PC.

Description of Image:

An image depicting a USB receiver on the left with an arrow pointing towards a laptop on the right, indicating the receiver should be connected to the laptop.

STEP 2

STEP 2



Remove the battery pull tab and switch the keyboard ON.

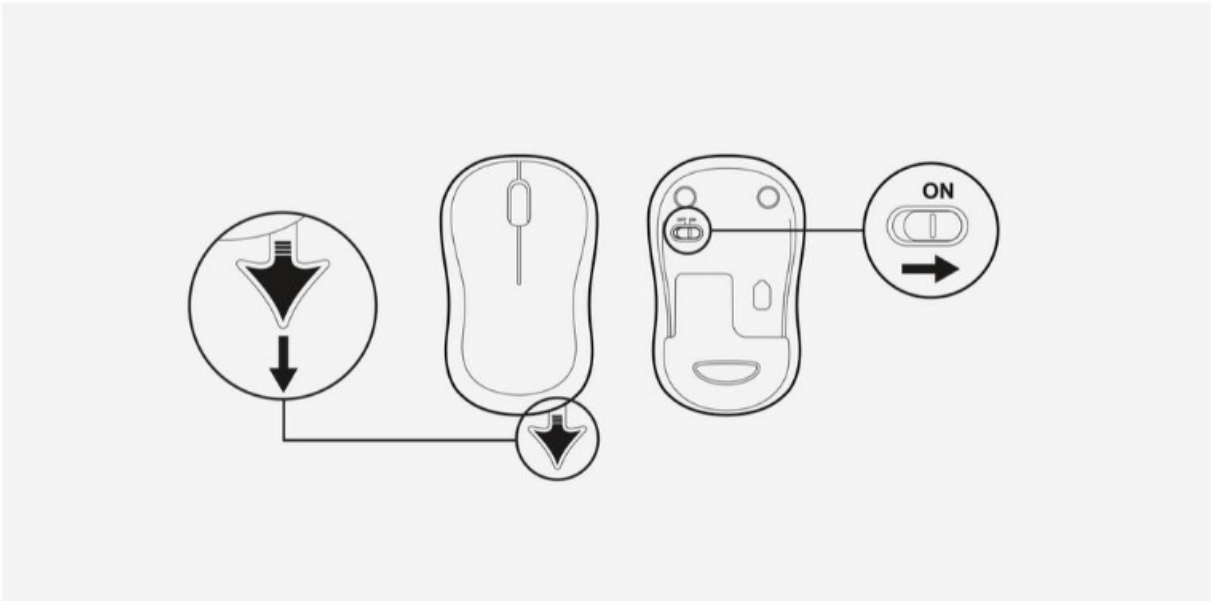
Remove the battery pull tab and switch the keyboard ON.

Description of Image:

The image shows a keyboard from a back view with an inset close-up of a power switch in the 'ON' position. Another inset shows a hand removing a pull tab from a slot on the keyboard, which is typically used to activate the batteries in a new device.

STEP 3

STEP 3



Remove the battery pull tab and switch the mouse ON.

Remove the battery pull tab and switch the mouse ON.

Description of Image:

The image illustrates a computer mouse. There are two insets: one showing a hand pulling a tab downward from the bottom of the mouse, and another showing the power switch being moved to the 'ON' position.

Specifications

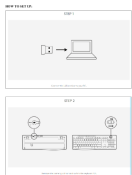
Component	Action	Description
USB Receiver	Connect to PC	A small device that enables wireless communication between the PC and the keyboard/mouse.
Keyboard	Remove pull tab and switch ON	A back view of the keyboard highlighting the battery compartment and power switch.
Mouse	Remove pull tab and switch ON	A bottom view of the mouse illustrating the removal of the battery tab and location of the power switch.

FAQ

- **Q: What do I do if my device is not working after setup?**
 - A: Ensure that the battery pull tabs have been removed and that both the keyboard and mouse are switched to the ON position. Check that the USB receiver is properly connected to the PC.

- **Q: How do I know if the batteries need to be replaced?**
 - A: Most devices have a battery indicator light or will exhibit decreased performance when the batteries are low. Replace with new batteries if necessary.
- **Q: Can I use the keyboard and mouse with multiple devices?**
 - A: This depends on the capabilities of the USB receiver and the devices. Some receivers allow connection to multiple devices, while others may be restricted to a single device. Refer to the manufacturer's instructions for details.

Documents / Resources

	<p>logitech MK295 Wireless Mouse And Keyboard Combo [pdf] Instruction Manual MK295 Wireless Mouse And Keyboard Combo, MK295, Wireless Mouse And Keyboard Combo , Mouse And Keyboard Combo, And Keyboard Combo, Combo</p>
---	--

References

- [User Manual](#)

Manuals+, Privacy Policy

This website is an independent publication and is neither affiliated with nor endorsed by any of the trademark owners. The "Bluetooth®" word mark and logos are registered trademarks owned by Bluetooth SIG, Inc. The "Wi-Fi®" word mark and logos are registered trademarks owned by the Wi-Fi Alliance. Any use of these marks on this website does not imply any affiliation with or endorsement.