



logitech MK295 Silent Wireless Keyboard and Mouse Combo User Guide

[Home](#) » [Logitech](#) » logitech MK295 Silent Wireless Keyboard and Mouse Combo User Guide

Contents [[hide](#)]

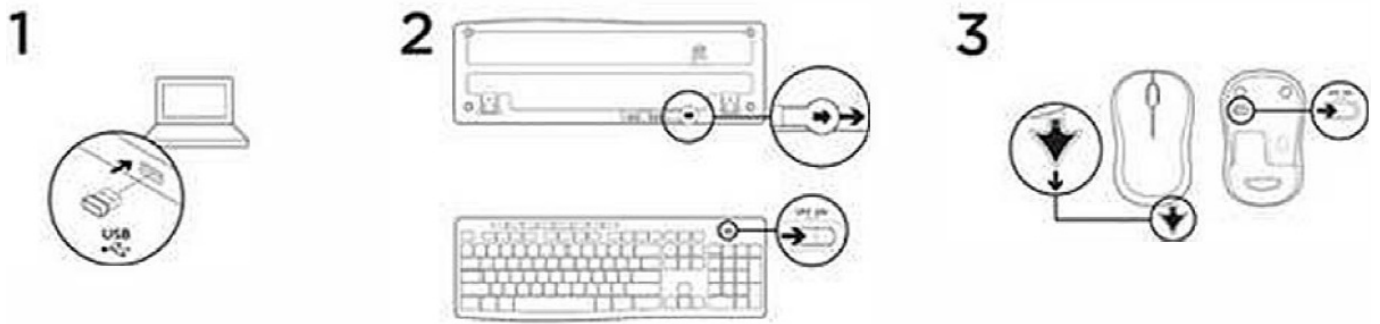
- [1 logitech MK295 Silent Wireless Keyboard and Mouse Combo](#)
- [2 Getting Started – MK295 Silent Wireless Combo](#)
- [3 Product Overview](#)
- [4 Tilt legs](#)
- [5 Documents / Resources](#)
- [6 Related Posts](#)

logitech

logitech MK295 Silent Wireless Keyboard and Mouse Combo



Getting Started – MK295 Silent Wireless Combo



Product Overview



Mouse

1. Left/right-click button
2. Scroll wheel/middle-click button
3. On/Off
4. Battery door

Keyboard

1. Media hotkeys
2. Caps lock indicator
3. On/Off
4. Battery door
5. USB storage
6. 8-degree tilt leg

Receiver

USB receiver

NOTE: Removing and reinstalling the keycaps will impact the noise reduction performance.

SilentTouch keys and media hotkeys



1. Play/Pause
2. Mute
3. Decrease volume
4. Increase volume
5. Navigate to the internet home
6. Launch email application
7. Place computer in standby mode
8. Launch calculator
9. SilentTouch Keys

Tilt legs

Choose from natural tilt or 8-degrees tilt positions based on your typing preference.


Natural tilt



8-degree tilt



Documents / Resources

	<p>logitech MK295 Silent Wireless Keyboard and Mouse Combo [pdf] User Guide MK295, Silent Wireless Keyboard and Mouse Combo, MK295 Silent Wireless Keyboard and Mouse Combo, Wireless Keyboard and Mouse Combo, Keyboard and Mouse Combo</p>
---	--