



logitech M220 Wireless Silent Mouse User Guide

[Home](#) » [Logitech](#) » logitech M220 Wireless Silent Mouse User Guide 

logitech®

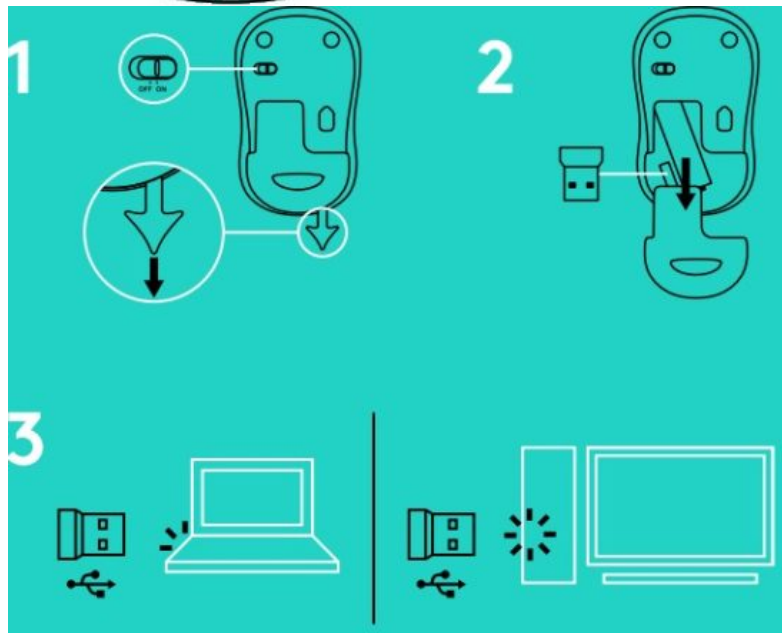
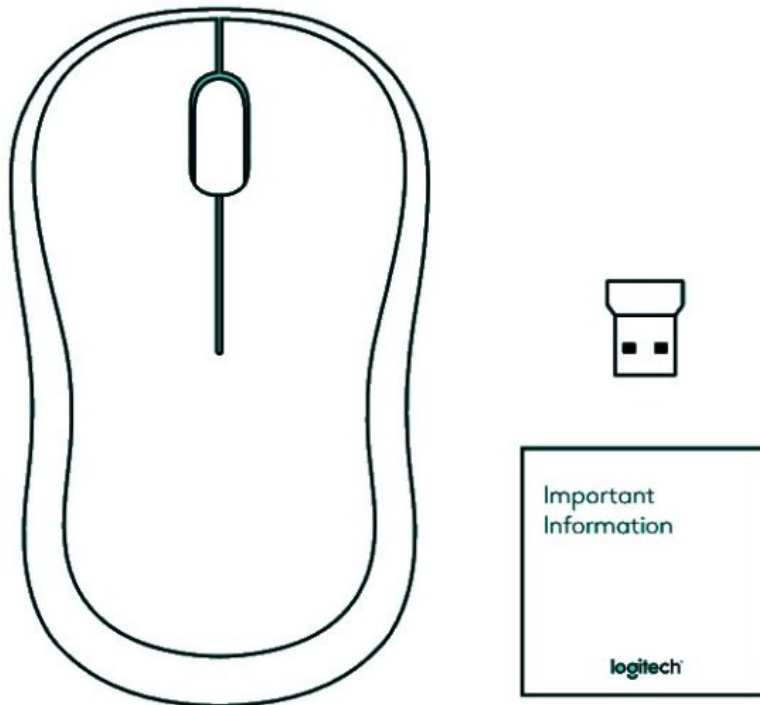
M185/M220
Setup Guide



Contents

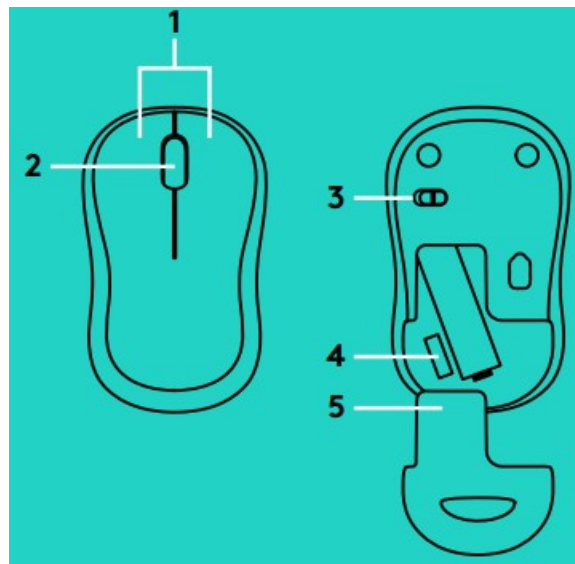
- 1 M220 Wireless Silent Mouse
- 2 MOUSE FEATURES
- 3 TROUBLESHOOTING
- 4 Documents / Resources
 - 4.1 References

M220 Wireless Silent Mouse



www.logitech.com/support/m185
www.logitech.com/support/m220C

MOUSE FEATURES



1. Left and right buttons
2. Scroll wheel
Press the wheel down for middle click
Function can vary by software application
3. On/Off slider switch
4. Battery door release
5. USB Nano receiver storage

TROUBLESHOOTING

Mouse is not working


- Is the mouse powered on?
- Is the receiver securely plugged into a USB port?
Try changing USB ports
- If the receiver is plugged into a USB hub, try plugging it directly into a USB port on your computer
- Check the orientation of the battery inside the mouse
- Try a different surface Remove metallic objects between the mouse and the receiver Try moving the receiver to a USB port closer to the mouse
- For Windows® operating systems, reconnect the mouse with the receiver by launching the Connect utility from www.logitech.com/connect_utility

© 2016 Logitech Logitech, Logi and other Logitech marks are owned by Logitech and may be registered All other trademarks are the property of their respective owners Logitech assumes no responsibility for any errors that may appear in this manual Information contained herein is subject to change without notice
621-000023 002

logitech®

Downloaded from www.Manualslib.com manuals search engine

Documents / Resources

	<p>logitech M220 Wireless Silent Mouse [pdf] User Guide</p> <p>M185, M220, M220 Wireless Silent Mouse, M220, Wireless Silent Mouse, Silent Mouse, Mouse</p>
---	---

References

- [User Manual](#)

[Manuals+](#), [Privacy Policy](#)

This website is an independent publication and is neither affiliated with nor endorsed by any of the trademark owners. The "Bluetooth®" word mark and logos are registered trademarks owned by Bluetooth SIG, Inc. The "Wi-Fi®" word mark and logos are registered trademarks owned by the Wi-Fi Alliance. Any use of these marks on this website does not imply any affiliation with or endorsement.