

logitech M Series Wireless Mouse



logitech M Series Wireless Mouse Instructions

[Home](#) » [Logitech](#) » logitech M Series Wireless Mouse Instructions 

Contents

- 1 [logitech M Series Wireless Mouse](#)
- 2 [Specifications](#)
- 3 [Product Usage Instructions](#)
- 4 [DIMENSION](#)
- 5 [Frequently Asked Questions](#)
- 6 [Documents / Resources](#)
 - 6.1 [References](#)
- 7 [Related Posts](#)

logitech

logitech M Series Wireless Mouse



Specifications

- **Model Numbers:** M275, M280, M330, M331, B330
- **Print Size:** 101.6mm x 101.6mm
- **Trim Size:** 101.6mm x 101.6mm
- **Inks:** Black
- **Fonts:** Logitech Brown Pro

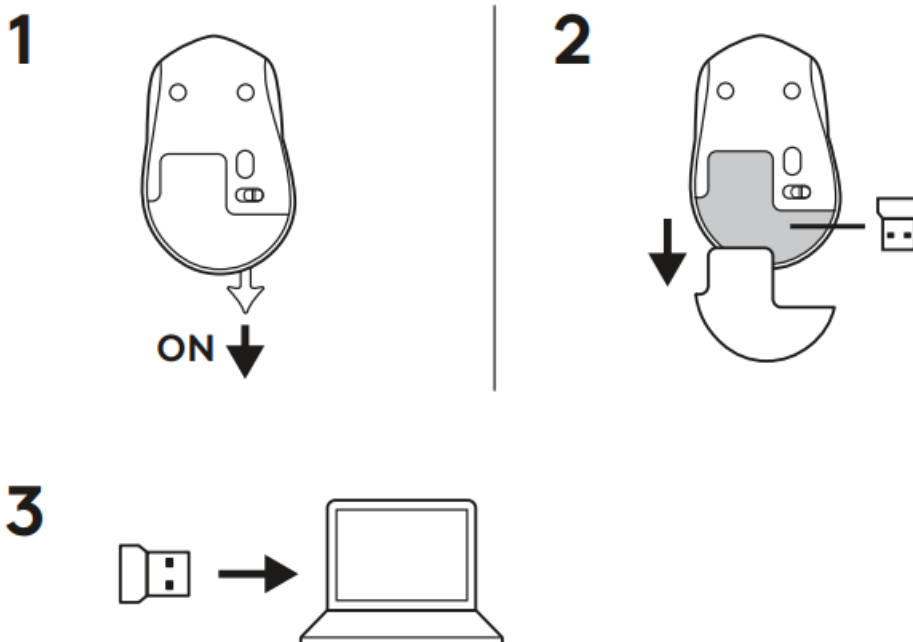
Product Usage Instructions

• Step 1: Turning On the Device

- Locate the power button labelled “ON” and press it to turn on the device.

• Step 2: Accessing Support

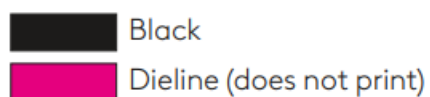
- For additional support or assistance, visit the Logitech website at www.logitech.com/support/m280.



www.logitech.com/support/m280

- **Project:** Kaluga QSG Insert
- **Date:** 6 October 2023
- **File Name** Kaluga 620-012697 00A QSG Insert PB1.ai
- **P/N:** 620-012697 Rev.00A

Inks



- Finish
- Notes n/a


DIMENSION

- **Print size:** 101.6mm x 101.6mm
- **Trim size:** 101.6mm x 101.6mm

Frequently Asked Questions

- **Q: What do the model numbers M275, M280, M330, M331, and B330 stand for?**
 - A: The model numbers represent different variations of the product line with varying features and specifications.
- **Q: How do I know when to replace the ink in the device?**
 - A: The device uses black ink and will show signs of fading or uneven printing when the ink needs replacement.

Documents / Resources

	logitech M Series Wireless Mouse [pdf] Instructions MR0112, JNZMR0112, mr0112, M Series Wireless Mouse, M Series, Wireless Mouse, Mouse
---	--

References

- [User Manual](#)

[Manuals+](#), [Privacy Policy](#)

This website is an independent publication and is neither affiliated with nor endorsed by any of the trademark owners. The "Bluetooth®" word mark and logos are registered trademarks owned by Bluetooth SIG, Inc. The "Wi-Fi®" word mark and logos are registered trademarks owned by the Wi-Fi Alliance. Any use of these marks on this website does not imply any affiliation with or endorsement.