



# Logitech Z333 Multimedia Speaker System User Manual

[Home](#) » [Logitech](#) » Logitech Z333 Multimedia Speaker System User Manual 

## Contents

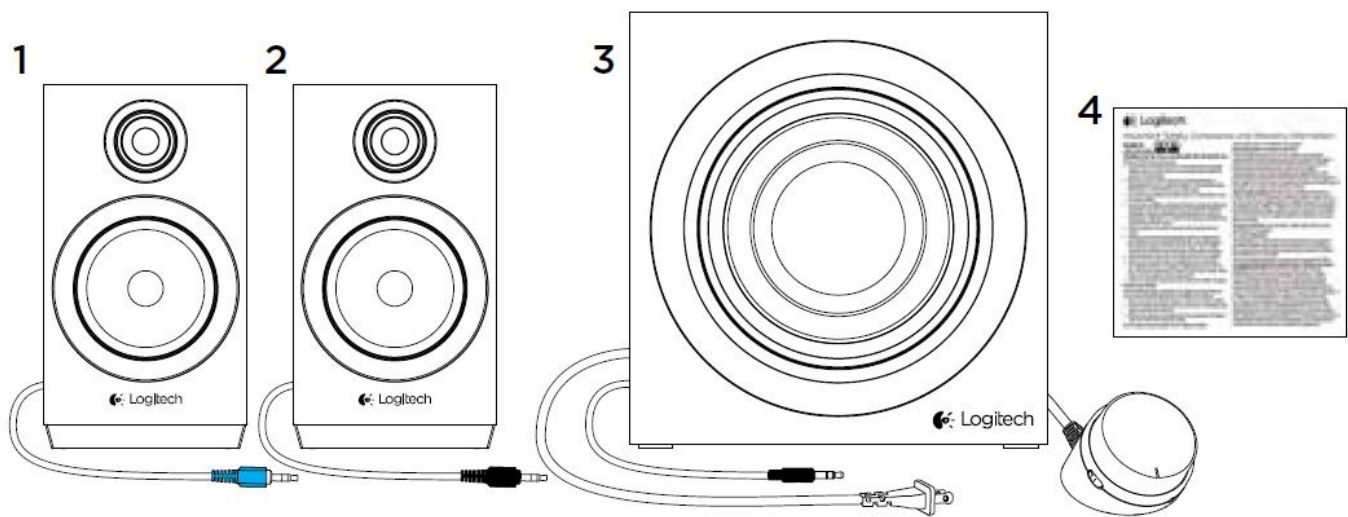
- [1 Logitech Z333 Multimedia Speaker System](#)
- [2 What's in the box?](#)
- [3 Set-up](#)
- [4 Features](#)
- [5 FAQ's](#)
- [6 Related Posts](#)



## Logitech Z333 Multimedia Speaker System

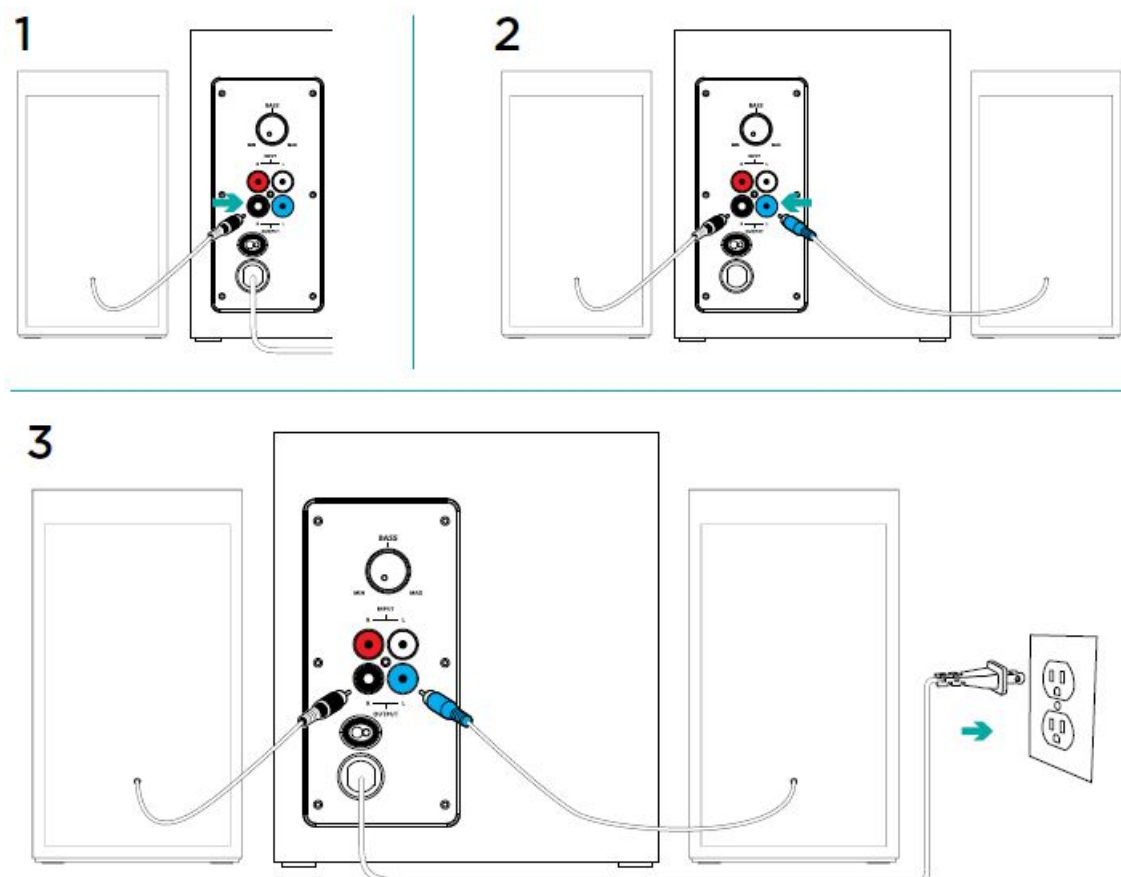


## What's in the box?



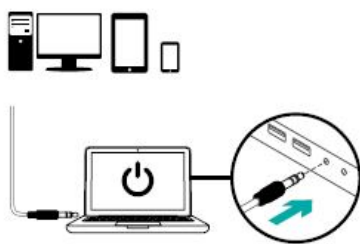
1. Left Satellite
2. Right satellite
3. Subwoofer
4. User documentation

## Set-up

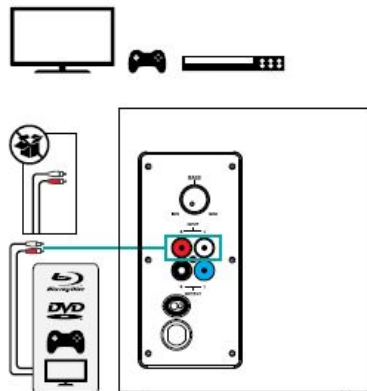


1. Plug the right satellite cable into the black subwoofer jack.
2. Plug the left satellite cable into the blue subwoofer jack.
3. Plug the power cord into an electrical outlet.

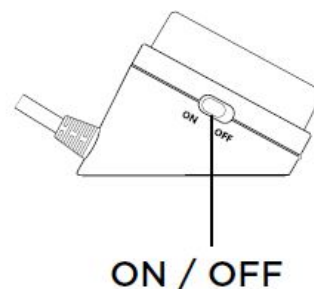
4A



4B



5



**4. A. If you have a 3.5mm outlet on your device:**

- Insert the 3.5mm plug from the subwoofer into the audio jack on your device (computer, tablet, smartphone, etc)

**B. If you have an RCA outlet on your device:**

- Insert the RCA jack on the subwoofer (the RCA cable is not included in the box and must be purchased separately)
- Insert the other end of the RCA cable into the RCA outlet on your device (TV, Gaming Console, etc)

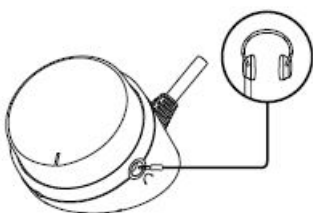
5. Switch ON the ON/OFF button on the wired remote to turn your Multimedia Speaker System z333 ON.

**Features**

1



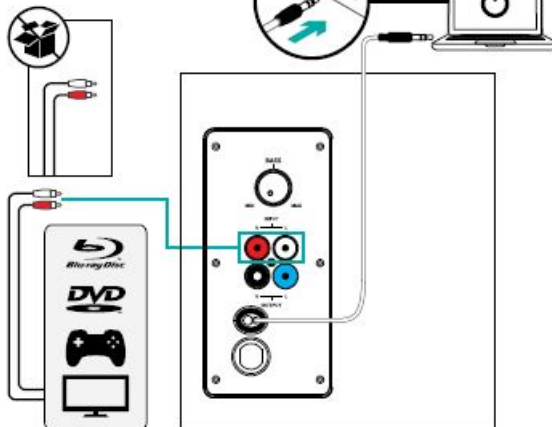
2



3 BASS



4



**1. ADJUSTING SPEAKER VOLUME**

Adjust your Multimedia Speaker System z333 volume with the wheel located in the middle of the wired remote. (VOLUME UP – turn the wheel to the right. VOLUME DOWN – turn the wheel to the left)

**2. USING HEADPHONES**

Most types of analog headphones with a 3.5mm connector can be plugged into the headphone jack on the right end side of the wired remote. When you plug in the headphones, the speaker is muted automatically. With headphones plugged into your Multimedia Speaker System z333, the main control volume is through your audio device (computer, tablet or smartphone, etc). Headphone volume will not be affected by volume adjustment on the wired remote.

**3. ADJUSTING BASS VOLUME**

To adjust the bass level of your Multimedia Speaker System z333, turn the bass control located at the back of

your subwoofer clockwise.

#### **4. CONNECT TO TWO DEVICES SIMULTANEOUSLY**

Connect to two devices at the same (TV and computer for example) through the RCA connector on the back of the subwoofer and the 3.5mm cable on the subwoofer.

### **FAQ's**

#### **What is the Z333 warranty?**

A constrained 1-year hardware warranty offers protection. With its two satellite speakers and substantial subwoofer, the 40W RMS / 80W peak system produces clear, powerful audio.

#### **Is Logitech Z333 a nice music player?**

The sound is fantastic, and the volume control button's on/off switch makes it very useful. Nothing to be unhappy with Logitech products. Ideal if you want to stick with a two-speaker setup with bass.

#### **Has the Logitech Z333 Bluetooth?**

Electronics: package of Logitech Z333 80 Watts Multimedia Speakers and Logitech Bluetooth Audio Adapter.

#### **How big is the Logitech Z333 subwoofer?**

Sized at 7.56 x 4.25 x 3.54 inches and weighing 1.32 pounds, each Logitech Z333 speaker. Sized at 9 by 9.13 by 6.18 inches and weighing 5.5 pounds, Sub.

#### **What duration do Logitech warranties have?**

In order to guarantee that your Logitech hardware is free from flaws in both material and workmanship, you can purchase a three-year extended Logitech limited hardware warranty along with Rally Plus. This warranty adds three additional years to the original two-year warranty provided by the Logitech manufacturer.

#### **Are record players compatible with Logitech speakers?**

You could, indeed. However bear in mind that in order for these speakers to make any sound at all, they require an outside power supply. Although the quality will be improved, they are not intended to be portable speakers. A: Yes, the Audio Technica LTP-60 turntable is compatible with these speakers.

#### **Is Logitech a reliable speaker manufacturer?**

The majority of reviews for Logitech speakers are positive. With over 1,000 customer reviews and an average rating of 4.5 stars, they are also one of the most popular brands for computer speakers on Amazon. The majority of people claim that they sound nice and are excellent value for the money.

#### **What wattage is Z333?**

Its 2.1 speaker system's 80 Watts Peak/40 Watts RMS power output provides the loudest sound possible while the front-facing subwoofer generates deep bass. The 3.5 mm and RCA inputs allow you to connect up to two compatible devices.

#### **The Logitech Z333 is it loud?**

Turn up the volume. The Z333 produces powerful, high-quality acoustics over the whole frequency spectrum with a deep bass response at a peak power of 80 W\*. RMS power of 40 W.

#### **How much room is required for a subwoofer?**

In fact, when pulled at least 8 to 12 inches from any wall, high-quality subs usually sound their finest. In order to reduce temporal delays and phase cancellation, subwoofers also perform better when situated in the front part of your listening area, nearer to your front-channel loudspeakers.

#### **Do speakers from Logitech require a driver?**

Yes, a driver update for the Logitech speaker is necessary for realistic sound.

**Does a microphone come with Logitech speakers?**

They are lacking a microphone.

**Can you get surround sound via Logitech?**

Right out of the box, the Logitech Z906 provides true surround sound. This THX-certified 5.1 speaker system is tuned to the highest standards and is designed to decode Dolby Digital and DTS-encoded soundtracks to give you a superior audio experience.

**Where on a computer do Logitech speakers connect?**

Connect the speaker cord to the desktop computer's green "Line-out" port. This cable frequently has a green connector as well. Connect the speaker cord to the laptop's headphone jack.

**Download this PDF Link:** [Logitech Z333 Multimedia Speaker System User Manual](#)