



Logitech X Pro Superlight Mouse Setup Guide

[Home](#) » [Logitech](#) » Logitech X Pro Superlight Mouse Setup Guide 

Contents

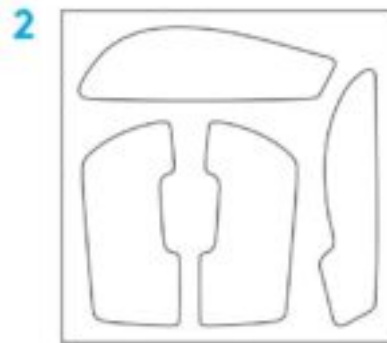
- [1 Logitech X Pro Superlight Mouse Setup Guide](#)
- [2 PACKAGE CONTENTS](#)
- [3 MOUSE FEATURES](#)
- [4 SETUP](#)
- [5 Questions about your Manual? Post in the comments!](#)
 - [5.1 Related Posts](#)

Logitech X Pro Superlight Mouse Setup Guide



PACKAGE CONTENTS

1. Mouse
2. Optional grip tape
3. Receiver (installed in extension adapter)
4. USB charging and data cable
5. Surface preparation cloth
6. Optional POWERPLAY aperture door with PTFE foot





MOUSE FEATURES

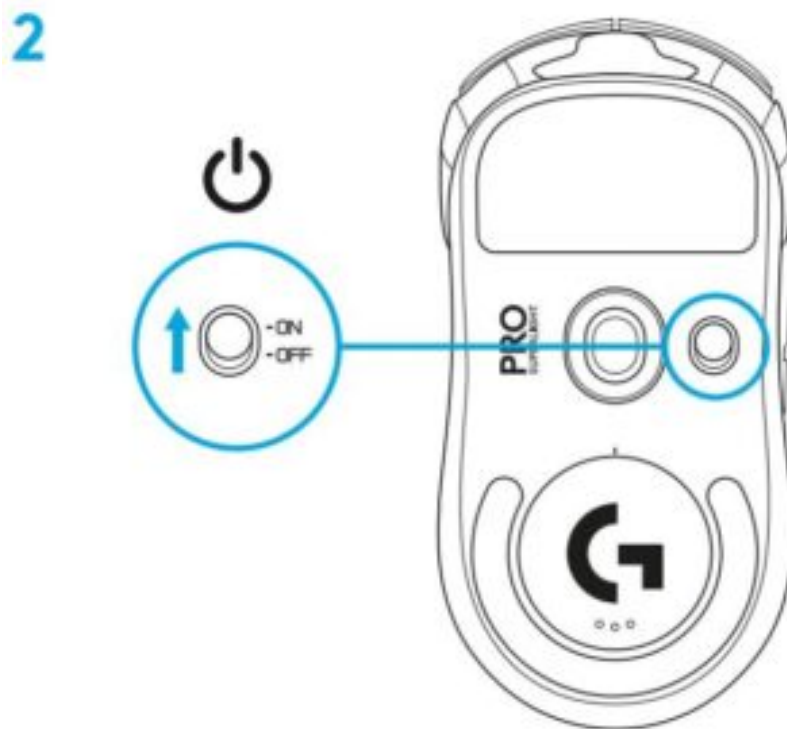
- Left Click
- Right Click
- Middle Click/Scroll
- Browser Forward
- Browser Back
- Power LED
- USB charging/data port
- Power on/off
- POWERPLAY™ Aperture door





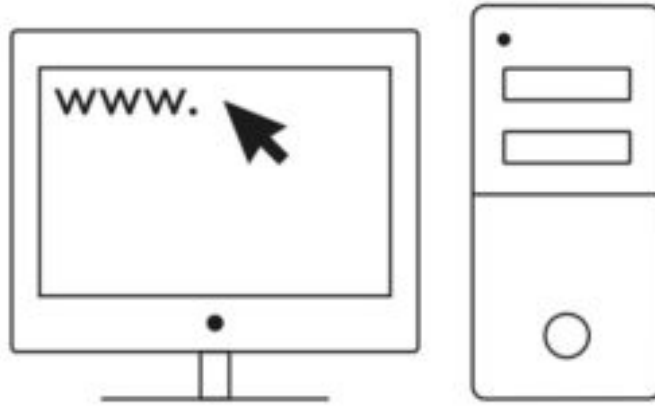
SETUP

- Plug charging/data cable into PC, then plug extension adapter and receiver into charging/data cable
- Turn on mouse

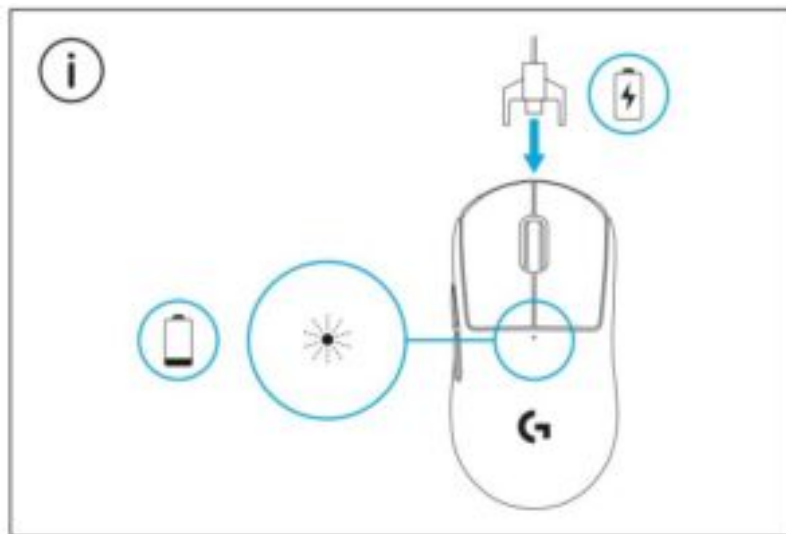


- To configure mouse settings like DPI, download G HUB software from logitechG.com/GHUB

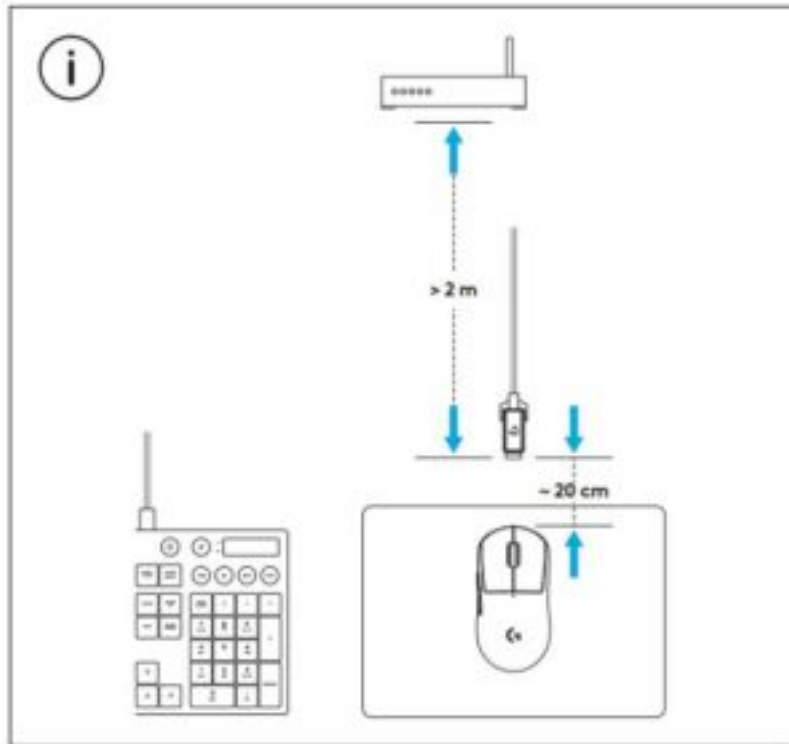
3



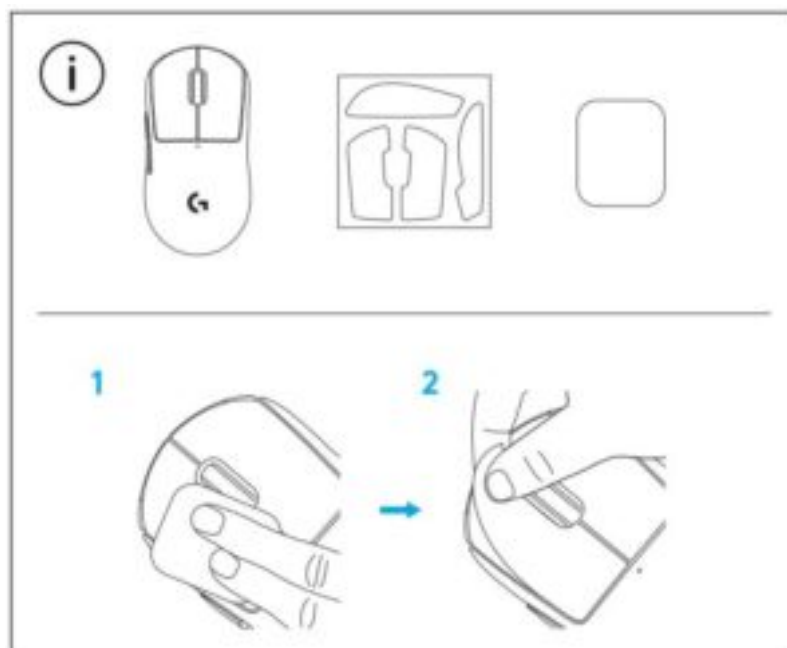
logitechG.com/ghub



For optimal wireless performance, use mouse within 20cm of receiver and greater than 2m from sources of 2.4GHz interference (such as wifi routers).

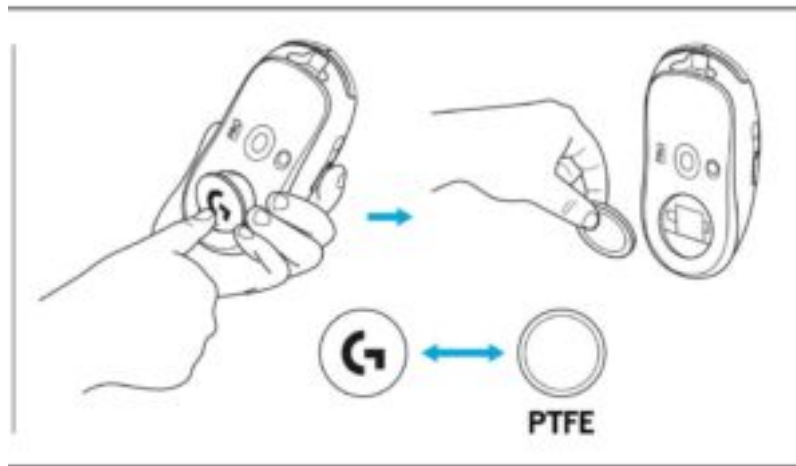
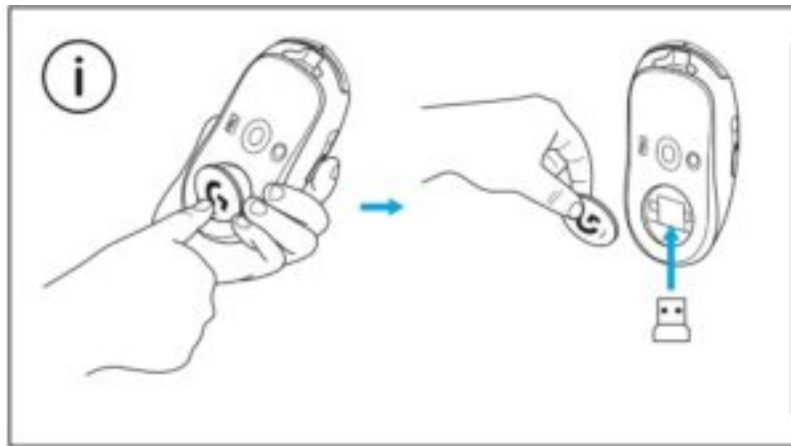


To install optional grip tape, first clean surface of mouse with provided surface preparation cloth to remove any oil or dust. Then, carefully align grip tape to mouse surfaces.



The USB receiver can be stored inside the mouse by removing the POWERPLAY aperture door. This can prevent the receiver from being lost when using the mouse with the Logitech G POWERPLAY wireless charging system.

Removing this door also allows the included, optional aperture door with PTFE foot to be installed instead of the default aperture door.



©2020 Logitech. Logitech, Logitech G, Logi and their respective logos are trademarks or registered trademarks of Logitech Europe S.A. and/or its affiliates in the U.S. and other countries. All other trademarks are the property of their respective owners. Logitech assumes no responsibility for any errors that may appear in this manual. Information contained herein is subject to change without notice.

Read More About This User Manuals...

[Logitech-X-Pro-Superlight-Mouse-Setup-Guide-Optimized.pdf](#)

[Logitech-X-Pro-Superlight-Mouse-Setup-Guide-Original.pdf](#)

—

Questions about your Manual? Post in the comments!

[Manuals+](#)