



Logitech S120 Stereo Speakers Complete Setup Guide

[Home](#) » [Logitech](#) » Logitech S120 Stereo Speakers Complete Setup Guide 

Contents

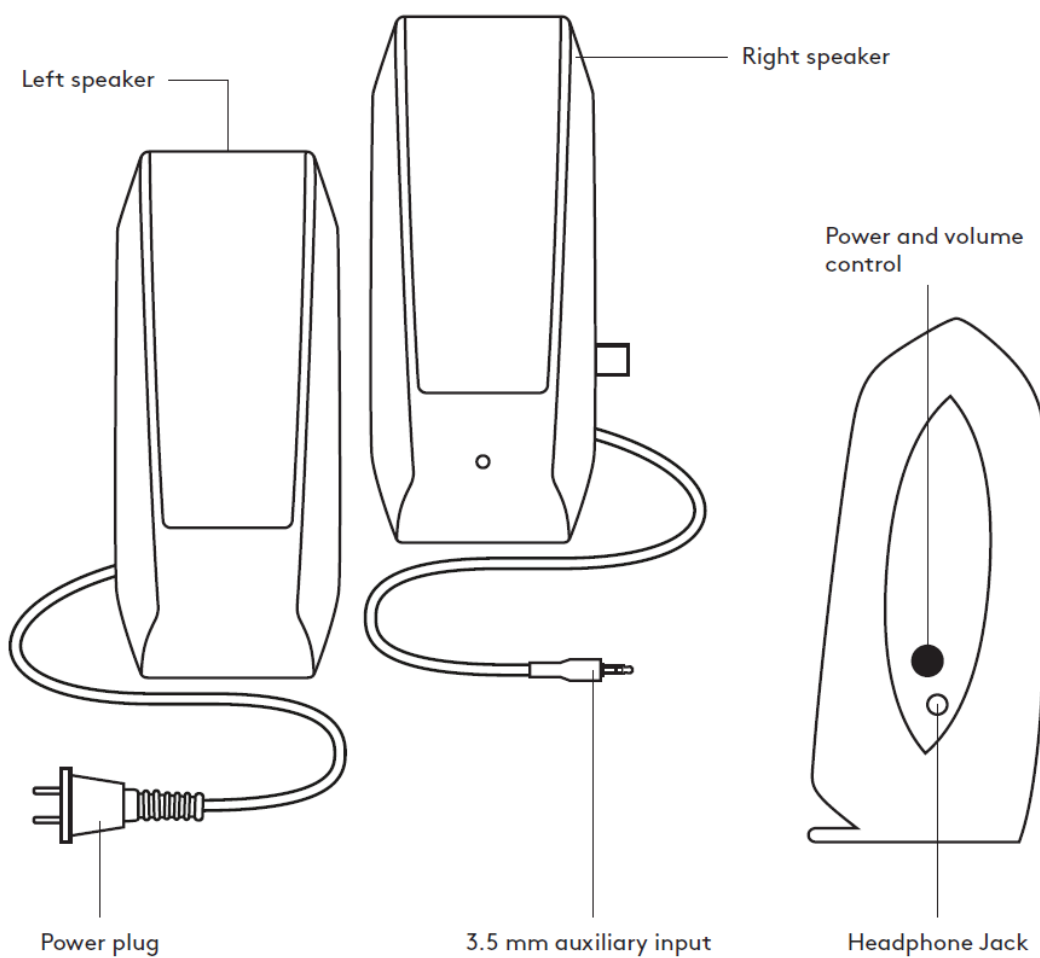
- [1 Logitech S120 Stereo Speakers](#)
- [2 KNOW YOUR PRODUCT](#)
- [3 CONNECT THE SPEAKERS](#)
- [4 ADJUST THE VOLUME](#)
- [5 Description](#)
- [6 PACKAGE CONTENT](#)
- [7 Specifications](#)
- [8 Features](#)
- [9 Support](#)
- [10 FAQ's](#)
- [11 Related Posts](#)



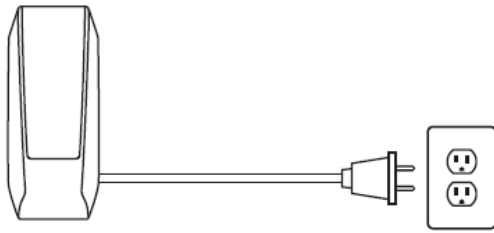
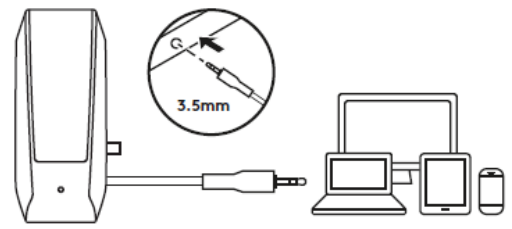
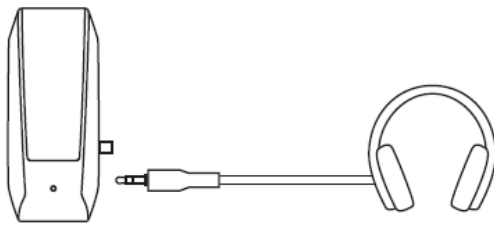
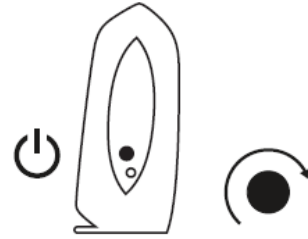
Logitech S120 Stereo Speakers



KNOW YOUR PRODUCT

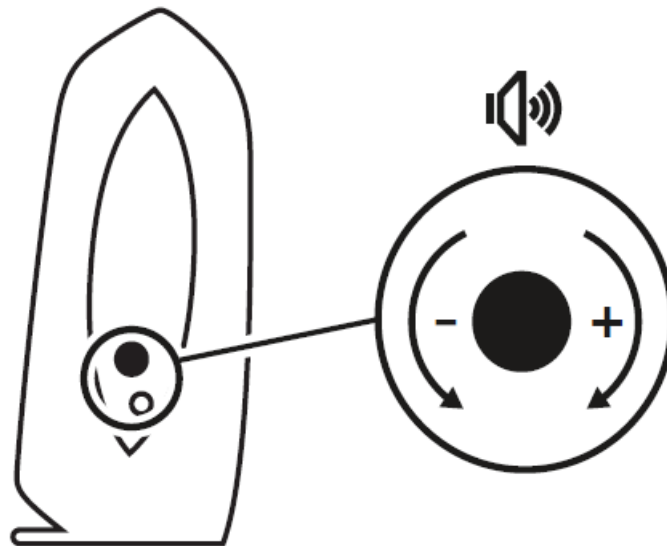


CONNECT THE SPEAKERS

1**2****3****4**

1. Plug the power plug into an electrical outlet.
2. Plug the 3.5 mm connector into the 3.5 mm input (headphone jack) on your device for audio.
3. (Optional) Connect your headphones to the headphone jack on the side of the right speaker.
4. Turn the speaker on (or off) using the power and volume knob on the side of the right speaker.

ADJUST THE VOLUME



Increase (or decrease) the volume of speakers by rotating the control knob clockwise (or counter-clockwise) on the side of the right speaker.

Description

Logitech® Speakers S120 let you enjoy your music, movies, and games with rich and full stereo sound. Just connect the speakers to your computer with a standard 3.5 mm plug and you're ready to go. Volume and power controls are conveniently placed and easy to use. You can plug in your headphones to the built-in jack and enjoy

your entertainment in private whenever you want to.

PACKAGE CONTENT

- Two speakers
- User documentation
- 2-year manufacturer guarantee and full product support

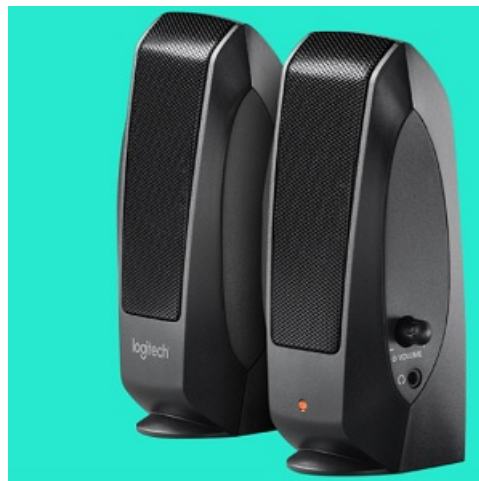
Specifications

- **Brand:** Logitech
- **Series:** S-120 Speaker System
- **Speaker Type:** Subwoofer, Satellite, Monitor
- **Connectivity Technology:** Wired
- **Recommended Uses For Product:** For Surround Sound Systems
- **Compatible Devices:** Laptop, Computer
- **Mounting Type:** Tabletop
- **Unit Count:** 2.0 Count
- **Surround Sound Channel Configuration:** 2.1
- **Item Weight:** 2 pounds
- **Product Dimensions:** 11.46 x 20 x 7.24 inches
- **National Stock Number:** 5965-01-601-3881

Features

- **Slim form**

These speakers are portable thanks to their sleek, light design.



- **Easy Setup**

Use the 3.5mm input to connect your device and enjoy crystal-clear stereo sound.

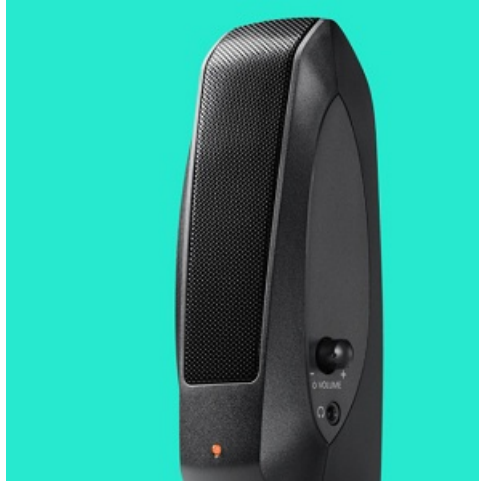
SIMPLE SETUP

Connect your device via the 3.5mm input and enjoy clear stereo sound.



- **Simple controls**

On the right speaker, you can easily access power, volume, and the headphone jack.



Support

www.logitech.com/business

© 2010 Logitech. Logitech, the Logitech logo, and other Logitech marks are owned by Logitech and may be registered. All other trademarks are the property of their respective owners.

FAQ's

How do they get power?

It has a 110-volt power cord on one of the speakers, no power brick, just a regular 2-prong cord. It has a power supply inside the speaker, as it is about twice as heavy.

Is it a USB plug or the kind that just plugs into the sound spot on the computer?

Just plugs it into the computer.

What is the audio cable length?

Yes, the audio cable measures 55" inches from the speaker to the end of the cable, now the audio cable between the speakers measures 47 inches.

Do they have an on-off switch?

Yes. The off is part of the volume control knob...all the way counterclockwise and it clicks off.

What purposes do Logitech speakers serve?

To enjoy your favorite music, radio, podcasts, and other media, they're perfect for connecting to your computer, sm

artphone, tablet, or MP3 player. The speakers' standard 3.5 mm audio output allows them to be connected to your device. They produce a full, crisp stereo sound. The speakers' highest power output is 6 W.

Why are speakers from Logitech so good?

Because of their excellent quality and reasonable pricing, Logitech speakers are very well-liked. They offer a wide variety of goods, ranging in price from the least expensive to the most.

What software is used with Logitech speakers?

Use the gaming software for Logitech G HUB to activate and adjust compatible Logitech G audio equipment.

How durable are Logitech speakers?

A good pair of speakers can endure for decades, but speaker longevity is dependent on a number of things. If properly maintained, speakers can last up to 20 years or even a lifetime.

Why does one of my Logitech speakers only function?

Your balance can be off, it seems. Click the Configure button to select your default sound device when you open the Sound applet in the Control Panel. Next, click the Balance button under the Levels tab. Make sure the balance is equal on the left and right speakers by adjusting the sliders.

Are the speakers from Logitech active or passive?

Each speaker features a passive radiator that extends the bass and an active/powered driver that produces full-range sounds.

What attributes distinguish excellent speakers?

Each speaker emits a range of frequencies, some of which are louder or softer than others. The less difference in loudness across frequencies—or, in other words, the flatter the frequency response chart is—the better the speaker quality, presuming that your ultimate goal is accurate audio reproduction.

Do speakers from Logitech require a driver?

Yes, a driver update is necessary for the Logitech speaker to provide immersive sound.

Can I use my Logitech speakers with my television?

Every computer, laptop, tablet, TV, or smartphone with a 3.5 mm audio input is compatible with speakers using a 3.5 mm cable.

What causes my Logitech speakers to be so silent?

Speakers that are too quiet may have hardware or software issues. Computer speakers that are too quiet can be fixed by updating your audio drivers. Inspect cables and wiring for damage or dust accumulation. Look for "Loudness Equalization" in the speaker settings on your PC.

What characteristics distinguish a speaker?

Sound pressure level, nominal input power, input impedance, frequency response, speaker size, and speaker weight are among the speaker specifications. A rating known as sound pressure level (SPL) relates to a maximum or nominal quantity at a certain frequency within the dynamic range.

Download this PDF Link: [Logitech S120 Stereo Speakers Complete Setup Guide](#)