



# Logitech R700 Wireless Professional Presenter Setup Guide

[Home](#) » [Logitech](#) » Logitech R700 Wireless Professional Presenter Setup Guide 

## Contents [ [hide](#) ]

- [1 Logitech R700 Wireless Professional Presenter](#)
- [2 Specifications](#)
- [3 Description](#)
- [4 What's in the box](#)
- [5 Plug and Play](#)
- [6 Features](#)
- [7 Using the timer](#)
- [8 Using the range indicator](#)
- [9 Troubleshooting](#)
- [10 What do you think?](#)
- [11 FAQ's](#)
- [12 Related Posts](#)



**Logitech R700 Wireless Professional Presenter**



## Specifications

- **Brand:** Logitech
- **Model:** R700
- **Display technology:** LCD
- **Special feature:** LCD
- **Connectivity technology:** Wireless
- **Mounting type:** Table Mount
- **Number of channels:** 8
- **Special feature:** Radio Transfer^Presenter^PC / Mac
- **Talking range maximum:** 100 Feet
- **Age range (description):** Adult
- **Voltage:** 3 Volts
- **Item dimensions:** L x W x H 23 x 7.5 x 4 centimetres
- **Number of batteries:** 2 Lithium Metal batteries required. (included)
- **Item weight:** 57 Grams

## Description

**Its wireless presenter's practical controls will help you make your point.**

You have strong control with the Logitech Professional Presenter R700 for presentations with a lot of impact. Even on projection screens, flat panel displays, and in rooms with intense lighting, a bright red laser pointer is simple to see. Control your time with silent, vibrating alarms and simple-to-use controls.

With a range of up to 100 feet, you can reach every corner of the room by moving around for increased impact.

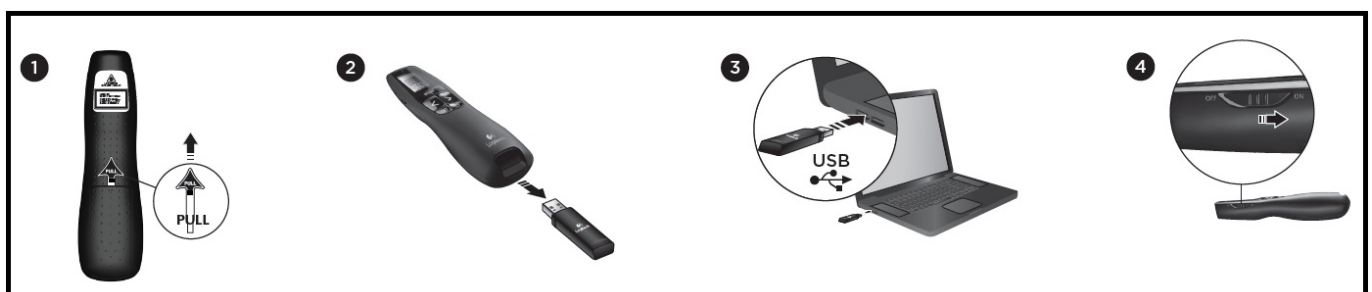
Take control of the slideshow with ease by using the easy controls that are simple to find by touch.

There is no software to install, making it simple to get started with a storable plug-and-play wireless receiver. Also, the receiver stores inside the presenter after use to make packing up simple.

## What's in the box



## Plug and Play



## Features

1. Laser pointer
2. Slide forward and back
3. Black screen (in some applications)

4. Launch slide show
5. Timer play/pause
6. Timer set



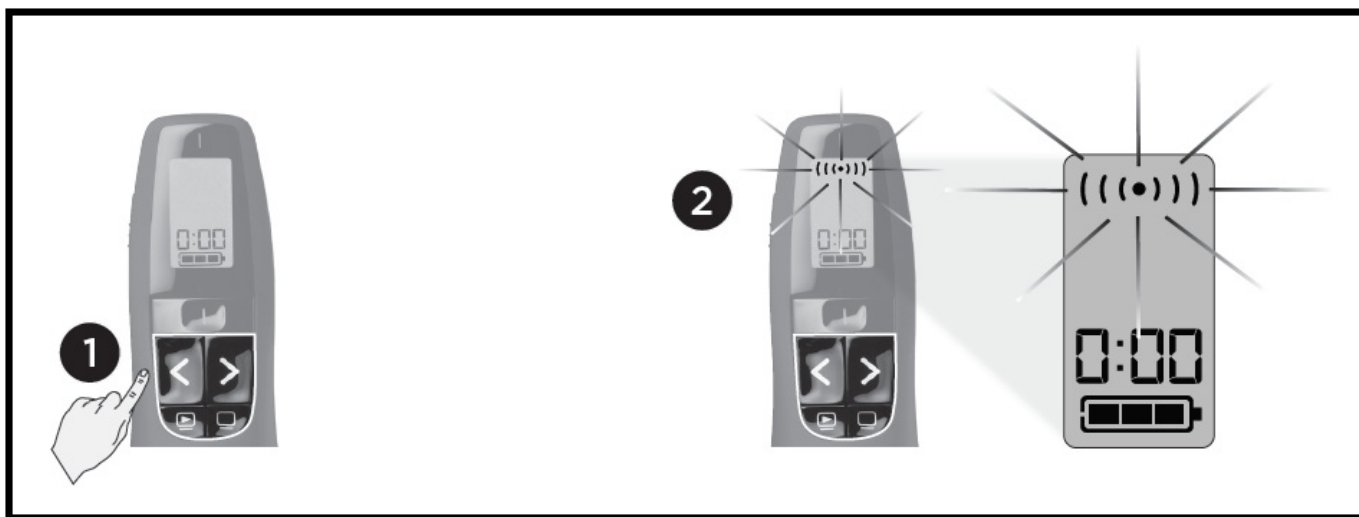
## Using the timer

1. Press the Timer Set button.
2. Use the Slide forward and back buttons to set the time. Holding the Slide forward or back button accelerates the speed at which numbers are displayed on the LCD.
3. Press the Timer Set button again to confirm the time setting.
4. Pressing the Play/Pause button starts the timer. Pressing the Play/Pause button again pauses the timer.
5. The silent alarm will vibrate with 5, 2, and 0 minutes left. The timer will then start counting up.
6. Holding the Timer Set button for 3 seconds clears the time setting.



## Using the range indicator

1. Pressing the Slide Forward, Slide Back, Launch slide show, or Black screen buttons will show the signal strength.
2. If there is no signal, the range symbol will blink.



## Troubleshooting

1. Are batteries and polarity OK?
2. Power switch on?
3. Receiver plugged in?
4. Range OK (up to 30 meters/100 feet)?
5. Try restarting your computer.

## What do you think?

Thank you for purchasing our product. Please take a minute to tell us what you think of it.

[www.logitech.com/ithink](http://www.logitech.com/ithink)

België/Belgique	Dutch: +32-(0)2 200 64 44; French: +32-(0)2 200 64 40		Россия	+7(495) 641 34 60
Česká Republika	+420 239 000 335		Schweiz/Suisse Svizzera	D +41-(0)22 761 40 12 F +41-(0)22 761 40 16 I +41-(0)22 761 40 20 E +41-(0)22 761 40 25
Deutschland	+49-(0)69-51 709 427		South Africa	0800 981 089
España	+34-91-275 45 88		Suomi	+358-(0)9 725 191 08
France	+33-(0)1-57 32 32 71		Sverige	+46-(0)8-501 632 83
Italia	+39-02-91 48 30 31		United Arab E mirates	8000 441-4294
Magyarország	+36 (1) 777-4853		United Kingdo m	+44-(0)203-024-81 59
Norge	+47-(0)24 159 579		European, Mid. East., & African Hq. Lausanne, Switzerland	English: +41-(0)22 761 40 25 Fax: +41-(0)21 863 54 02
Polska	00800 441 17 19		Lausanne, Swit zerland	English: 41-(0)22 761 40 25
Portugal	+351-21-415 90 16		Eastern Europe	

## FAQ's

### Does this work with Mac operating systems?

All the buttons work as expected on Mac OS X 10.9.5 when running Powerpoint in Office 2011. This even includes the 'start presentation' button.

### Does this item come with a protective case?

Not exactly a case, more like a fabric cover. But it's a very neat device, and better than the cheaper Logitech model.

### Can the pointer's buttons be assigned to custom key presses, i.e. a button would press a "b"?

No customization as far as I know, but in PowerPoint (and possibly Keynote) a "b" makes the screen go black, and there's a dedicated button for this.

### Is this item 23cm long?!? or is that just the packaging? Seems a bit big!

It's the packaging, not the pointer

### **How is the R700 different than the R800 model?**

as far as I can understand the 700 has a range of about 25 meters from your laptop and the 800 about 50 meters. I found 25m more than enough for the work I do.

### **Does this product work with Apple Macbook?**

Sorry Mark I don't know as I use it on a normal Windows 10 laptop.

### **Is this compatible with a Mac?**

It's Windows only according to the Logitech site below – you need to look at the Spotlight as that is Mac compatible.

### **Does this work with all Versions of Microsoft Office (i.e. 2003 to 2016/2019) or only certain versions?**

It works with all presentation apps and is backward compatible with all PowerPoint versions. The timer is also useful for break reminders etc. I've used my presenters on laptops and computers running older versions of Windows back to XP Service Pack 1.

### **What is the range of the Logitech R700?**

With up to 100 feet (30 m) range you'll enjoy the freedom to move around the room and mingle with your audience for high impact. A reception-level indicator ensures you don't wander too far.

### **How do I connect my Logitech clicker?**

Plug the USB receiver into your computer, or connect via Bluetooth. Press and hold the top and bottom buttons at the same time for 3 seconds. The remote should vibrate and then be available for Bluetooth pairing for three minutes. Complete the Bluetooth pairing on your computer.

### **How do I charge my Logitech presenter?**

Use the included USB-C charging cable and get 3 hours of presenting after a 1-minute charge. Spotlight fully charges in as little as 60 minutes. The device will vibrate and the battery indicator glows red when it's time to recharge.

### **How do I use the Logitech presenter spotlight?**

Activate the Spotlight on-screen pointer effects and customize their size, contrast, and color. TIP: Double press the highlight button on your Spotlight to toggle between pointer effects. Press and hold the next button to start your presentation. You can customize the long press on this button.

### **What is a wireless laser presenter?**

If you conduct presentations with PowerPoint or other suitable presentation software, this 2.4GHz wireless presenter will give you portable control of your slides, and a laser pointer too. It provides you with next/previous slide functionality, as well as a screen blanking option.

### **Why is my wireless presenter not working?**

Make sure the USB receiver isn't plugged into the clicker though, otherwise the laser pointer won't work either way. If the problem persists, restarting the machine with the USB receiver plugged into a powered port sometimes helps. Otherwise, use Device Manager to correctly identify the receiver.

### **How do I turn on the presenter mode team?**

The presenter view is hidden by default for small screen devices but can be turned on by selecting More options below the current slide and then Show presenter view (or by selecting the sharing window and then pressing Ctrl+Shift+x).

**Download this PDF Link:** [Logitech R700 Wireless Professional Presenter Setup Guide](#)

